



BLUE OX® TT2400 Installation Instructions

Ford F-53 14,000, 16,000 & 18,000 GVW
Motor Home Chassis Rear Bar

TigerTrak

Each installation may vary due to chassis manufacturing options and design variations. The rod assembly may be installed in several different combinations, such as front or rear of the supplied brackets, as well as using different bracket holes. The important thing is to maintain clearance between your TigerTrak and any moving or stationary chassis component such as exhaust, vehicle frame, differential, or any other item which may interfere with the operation of this product. Pictures and diagrams may not represent the exact installation for your application.



Torque Specs	
Use these torque specs unless otherwise specified.	
Bolt Description	Torque Spec.
1/2 x 4.5 U-bolt	75 ft/lbs
1/2 x 1 1/2 USS GR. 8	95 ft/lbs
1/2 x 2 USS GR. 8	95 ft/lbs
1/2 x 2 1/2 USS GR. 8	95 ft/lbs
1/2 x 3 USS GR. 8	95 ft/lbs
1/2-13 x 1 SQ. Set Screw	75 ft/lbs
1/2 x 1 1/4 SAE GR. 5	80 ft/lbs
5/8 x 2 SAE GR. 8	150 ft/lbs
5/8 x 2 3/4 SAE GR. 8	150 ft/lbs
5/8 x 1 1/4 SAE GR. 5	200 ft/lbs
3/4 x 3 SAE GR. 5	150 ft/lbs
3/4 x 3 1/2 SAE GR. 5	150 ft/lbs
3/4 X 5 SAE GR. 5	150 ft/lbs
12-1.75 x 55 MM HEX 10.9	65 ft/lbs
12-1.75 x 120 MM HEX 10.9	65 ft/lbs
12-1.75 MM HEX NUT 10.9	65 ft/lbs
14-2.0 x 40 MM HEX 10.9	125 ft/lbs
14-2.0 x 80 MM HEX 10.9	125 ft/lbs

Tools Required

- 1-1/8" Combo Wrench
- 3/4" Combo Wrench
- 3/4" Socket
- 1-1/18" Socket
- 1/2" Drive Ratchet
- 1/2" x 6" Extensions
- 1/2" Combo Wrench
- Torque Wrench

NOTICE

- Only a qualified mechanic using normal automotive tools and following all safety standards should perform installation of this product.
- On earlier and lighter weight chassis models the sway bar brackets used 10MM nuts and bolts. Some of the more recent models may already 12MM nuts and bolts installed. We strongly suggest this hardware be replaced with the 12MM nuts and bolts that are included in the TigerTrak hardware kit in order to adequately install the product. Please reference the torque chart.
- If the vehicle is equipped with air bags be sure that nothing interferes with the deployment of them.

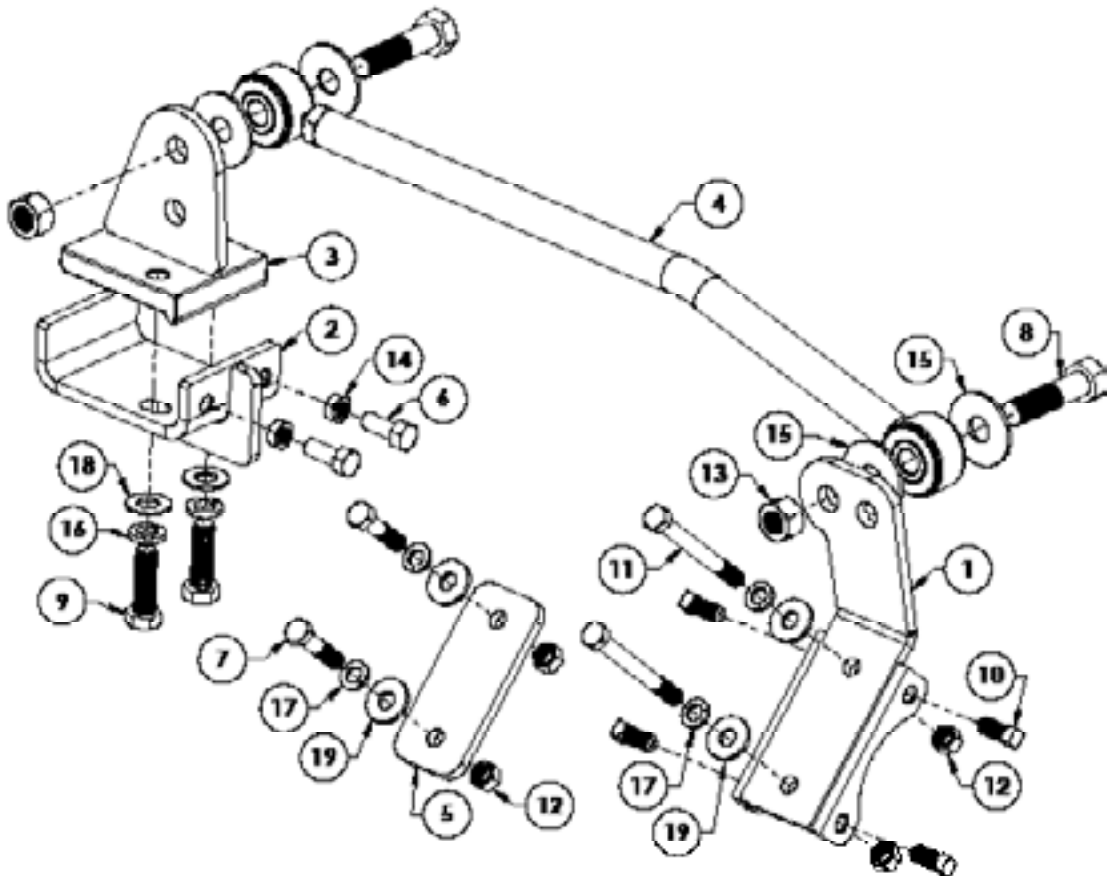


TigerTrak

BLUE OX® TT2400 Installation Instructions

Ford F-53 14,000, 16,000 & 18,000 GVW
Motor Home Chassis Rear Bar

Item No.	Part Number	Description	Qty.
1.....	61-6420.....	TigerTrak 2400 Mounting Bracket Weldment.....	1
2.....	61-6745.....	TigerTrak Frame Bracket Weldment.....	1
3.....	61-6746.....	TigerTrak Nut Plate Frame Bracket Weldment.....	1
4.....	62-3636.....	TigerTrak Rod Assembly.....	1
5.....	101-7117.....	TigerTrak Spacer Plate.....	1
6.....	201-0308.....	1/2"-20 x 1-1/4" Hex Head Bolt, Grade 5, ZP.....	2
7.....	201-0467.....	12MM-1.75MM x 50MM Hex Head Bolt, Grade 10.9.....	4
8.....	201-0632.....	3/4"-16 x 3" Hex Head Bolt, Grade 5, ZP.....	2
9.....	201-0912.....	5/8"-18 x 2" Hex Head Bolt, Grade 5, ZP.....	2
10.....	201-0816.....	1/2"-13 x 1" Square Head Cap Set Screw, Grade 5, ZP.....	4
11.....	201-0817.....	12MM-1.75MM x 120MM Hex Head Bolt, Grade 10.9.....	4
12.....	202-0117.....	12MM-1.75MM Hex Nut, ZP.....	4
13.....	202-0168.....	3/4"-16 Stover Lock Nut, ZP.....	2
14.....	202-0184.....	1/2"-20 Jam Hex Nut, Grade 5, ZP.....	2
15.....	203-0007.....	3/4" Flat Washer, ZP.....	4
16.....	203-0013.....	5/8" Lock Washer, ZP.....	2
17.....	203-0105.....	12MM Lock Washer, ZP.....	4
18.....	203-0106.....	5/8" SAE Flat Washer, ZP.....	2
19.....	203-0112.....	12MM Flat Washer, ZP.....	4
Not shown.....	190-0155.....	10-1/2" Loom Flex, Grade .413 ID.....	1
Not shown.....	290-0275.....	8" Nylon Cable Tie.....	2





BLUE OX® TT2400 Installation Instructions

Ford F-53 14,000, 16,000 & 18,000 GVW
Motor Home Chassis Rear Bar

TigerTrak

Installation Instructions

1. Move the coach to a level surface. Drive the coach back and forth ten (10) feet once or twice. Insure the vehicle's front wheels are positioned straight forward prior to starting the installation. Set the park brake and place wheels chocks.
2. Center the TigerTrak on the frame rail. Position the two (2) holes so the TigerTrak lines up square. Align the TigerTrak to the center of the frame rail or as close to center as possible.

Axle Bracket Installation

1. Remove the bolts from the sway bar on the differential one side at a time in order to prevent the sway bar from accidentally falling.
2. On the driver's side insert the axle bracket underneath the sway bar bracket and install the supplied hardware. Put a drop of Loctite Red® on each set screw and thread into the drilled and tapped holes. Tighten the set screws, this will prevent lateral movement of the bracket.
3. On the passenger side, insert the spacer plate between the sway bar brackets and the differential. Install the bolts that were supplied in the kit.

Frame Bracket Installation

1. Install the frame bracket assembly on the passenger side frame rail of the coach. Place the frame bracket on the bottom of the frame rail with the drilled and tapped holes positioned towards the center of the coach. Place the nut plate on the top of the frame rail inside of the frame. Please reference figure 1.

Be sure that there are no wires, hoses or lines that come in contact with nut plate.

Leave this assembly loose in order to slide it forward and backward on the frame. All hardware will be tightened after the rod assembly is installed on the axle bracket assembly.

Rod Assembly Installation

1. Install the rod assembly using the 3/4" bolts, flat washers and lock nuts. Be sure to place a flat washer on each side of the polyurethane

bushings. When adjusting the length of the rod assembly, it is necessary that the coach's full weight be on the suspension. Make sure the bend is in the center above the differential.

2. Mount the bar behind the axle bracket and in front or rear of frame bracket nut plate using the top hole. Adjusting to fit with the coach at NORMAL RIDE HEIGHT. Torque all bolts to spec. (See torque chart). Torque the jam nut to 100-150 ft. lbs.
3. Tighten all hardware on the frame bracket assembly.
4. Use the loom to cover any wires or hoses that may come into contact with the assembly and secure it with the cable ties that were provided.

CUSTOMER SERVICE COMMITMENT

Blue Ox® is committed to providing you with exceptional customer care throughout your lifetime with our products. Our team is here to assist you with any questions you may have regarding the performance of your product. Simply call (402) 385-3051 and you can speak with our customer care team.

Additionally, please visit our website to see which rallies our Destination America team will be attending. For a nominal fee, our service technician will service your towing system to ensure it's in proper working condition. Also, as a commitment to our customers, should you visit our factory, you can stay at our full service Blue Ox® campground at no charge along with enjoying a free factory tour.

Again, thank you for being our customer and for the confidence you have shown in the performance of our products. It is because of customers like you we enjoy the success we have today.



BLUE OX®