

## STEP 1 – PRIOR TO INSTALLATION

- A) Bushwacker only** approves installing the flares according to these written instructions with the hardware provided. **WARNING:** Failure to install according to these instructions will invalidate the warranty. This includes, but is not limited to using alternative installation methods, hardware, or materials. **DO NOT USE:** Loctite, SuperGlue, or similar products on the hardware or the flares.
- B) Fit:** Verify the fit of the flares to vehicle. (Some filing, sanding, or cutting may be necessary to ensure proper fit).
- C) Painting:** (Optional) if paint is desired it must be done prior to installing flares on vehicle. Clean outer surface with a good grade degreaser. **DO NOT USE LACQUER THINNER OR ENAMEL REDUCER AS A DEGREASER.** Wipe outer surface thoroughly with a tack rag prior to paint. Application of plastic adhesion promoter for ABS plastic as per your paint system manufacturer's recommendations is required. Paint flares using a high quality enamel, or polyurethane automotive paint. If painting edge trim (not recommended), use a flex additive.
- D) Performance:** Using larger Tires may increase the area required to turn the vehicle. Some Tire/Rim combinations may require lowering bump stops and or installing steering stops to prevent tire from contacting flare.
- E) Exhaust System:** Modifications may be necessary to maintain a minimum 4" clearance between flares and exhaust pipes. (Exhaust gases should not vent directly onto flares)
- F) Metal Protection:** All exposed fasteners and bare metal should be treated with rust resistant paint **BEFORE** installing flares. Spray inner fender wells with undercoating **AFTER** flare attachments have been completed.
- G) Decals:** Flares may interfere with existing decals on vehicle. If you wish, remove decals prior to installation of flares.

# Jeep® Flat Style Fender Flares Rear Pair

Rear Part #10050-07

Rev-9 10/24/2013

For complete fitment info visit : [www.bushwacker.com](http://www.bushwacker.com)

## TOOLS FOR EASY INSTALLATION:

- Grease Pencil or Scribe
- Pneumatic Hand Saw or Metal Hacksaw (optional, Step 9)
- #2 Phillips Screwdriver
- Socket Wrench
- 1/2", 11/32" & 10mm Sockets.
- 1/2" Wrench
- 8" Socket Extension
- Needle Nose Pliers or Vise Grips
- Scratch awl (optional Step 31)
- Soft wiping cloth
- Pry Bar
- Safety Glasses

## LIMITED LIFETIME WARRANTY AGAINST ANY MANUFACTURING DEFECTS

- To claim a warranty, you must provide Proof of Purchase.

## Included in Hardware Kit:

- |   |  |  |  |  |  |   |  |
|---|--|--|--|--|--|---|--|
| 1. <br>AD1-0008,<br>ALCOHOL PREP<br>PAD,<br>2 pcs    | 2. <br>CL1-0022,<br>#10 "U" Clip,<br>12 pcs                   | 3. <br>ET1-0002,<br>Edge Trim Tool,<br>1 pc           | 4. <br>GP1-0006,<br>Wiper Style (2-<br>tape) Edge Trim,<br>130 inches | 5. <br>NU1-0016,<br>5/16-18 SS<br>Nylock Nut,<br>4 pcs | 6. <br>RV1-P006,<br>8 x 20mm Black<br>Nylon Retainer,<br>14 pcs | 7. <br>SW1-0052,<br>T-45 Torx Bit,<br>1 pc |  |
| 8. <br>RV1-P008,<br>1/4" Panel<br>Retainer,<br>10 pc | 9. <br>SW1-0008,<br>5/16-18 x 3/4"<br>HexHead Screw,<br>4 pcs | 10. <br>SW1-0056,<br>#8 x 3/4"<br>PH Screw,<br>12 pcs | 11. <br>WA1-0012,<br>.320 x .700 x .03<br>SS Washer,<br>4 pcs         |  |  |   |  |

## STEP 2 - EDGE TRIM INSTALLATION

**NOTE:** Edge trim (GP1-0006) will be installed on the **FLARES** only, not the inner pieces.

A. Peel two to three inches of red vinyl backing away from Edge Trim (GP1-0008) tape. Applying the adhesive side of the edge trim to the inner side of the flare, affix the edge trim to the top edge of the flare (the portion that comes in contact with the vehicle).

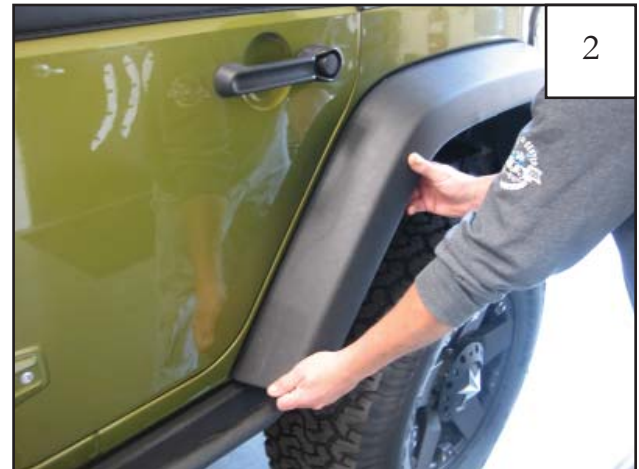
B. Press edge trim into place along the top edge of the flare in one-foot increments, pulling red vinyl backing free as you continue to work your way around the top edge of the flare.



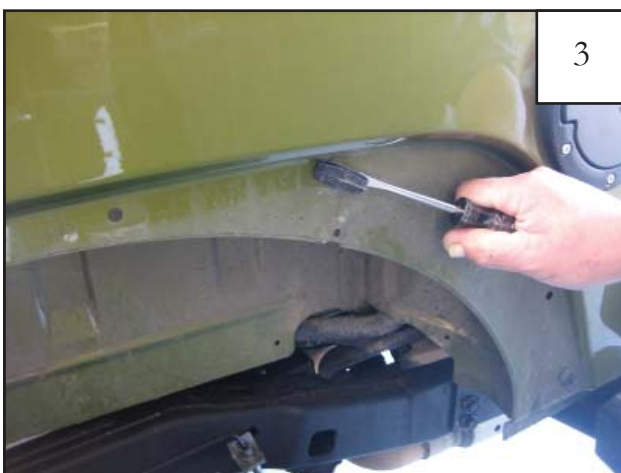
## Rear Flare Installation Procedures (Driver's Side):



Using a pry tool, pliers, or flat head screwdriver, remove four plastic fasteners from inside of splash shield.



Starting at front of flare, pull *firmly* to release flare and splash shield from fender, working your way to the back. You will hear popping noises as clips release. It is okay if clips break, they will be discarded.



Using a pry tool or flat head screwdriver, remove any plastic clips still in fender.



Use a drill with a 5/16" bit to drill through six plastic rivets along edge of flare/splash shield. Discard the flare. Save splash shield for reinstallation.



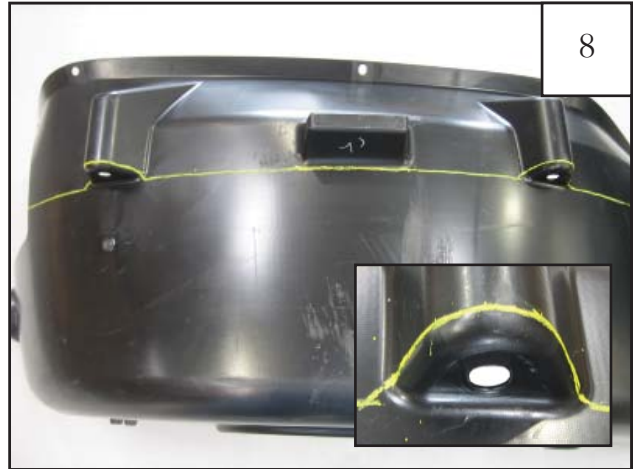
Thoroughly clean the exposed metal fender with a damp cloth then dry.



Hold the splash shield in place using supplied 1/4" Panel Retainers through factory holes halfway. *Do not fully install Retainers, leave them half out. They are only used to hold splash shield in place for marking. See step 26 for locations.*



Using sheet metal as a guide, mark the splash shield with a grease pencil in preparation for trimming. The splash shield should be flush with the sheet metal after being trimmed. *NOTE: If trimmed too little, flare won't fit; if trimmed to much, shield won't stay behind flare.*



Remove splash shield. Trace around upper mounting tabs with grease pencil as shown. Mounting tabs are necessary for reinstallation.



Using a metal hacksaw, pneumatic hand saw, or other suitable cutting device, trim the splash shield along the marked lines.



After trimming, mark the rear portion of the splash shield as shown and trim. *NOTE: If trimmed too little, flare won't fit; if trimmed to much, shield won't stay behind flare.*



11

Sand mounting tabs flat using an angle grinder or sand paper.



12

Place a grease pencil mark 1/8" below the hole on the rear mounting tab.



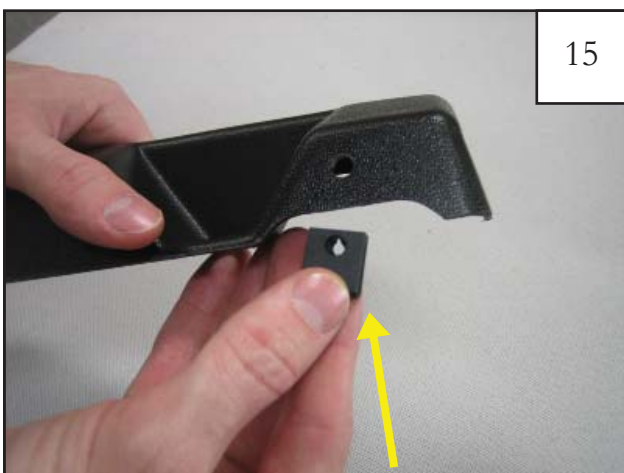
13

Use a drill and 5/16" drill bit to drill through mark made on rear mounting tab.



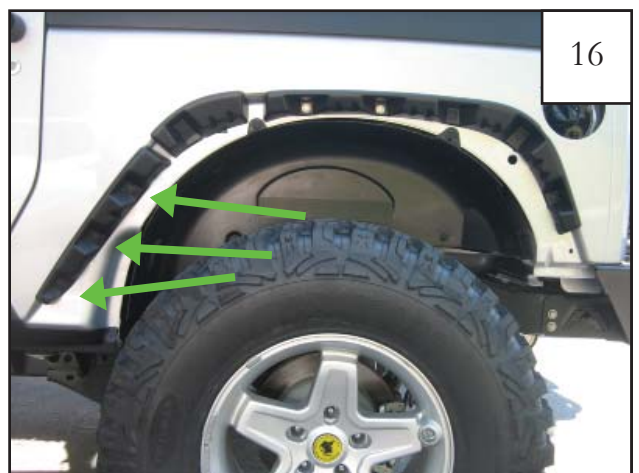
14

Locate the flat flare rear inner pieces. The driver side rear inner pieces are marked D5, D6 & D9. The passenger side front inner pieces are marked P5, P6 & P9.



15

Install a speed clip at each clip location on the inner pieces, centering them on the predrilled holes with threaded portion on inside. (6 locations) *NOTE: Clips may slide out of place. Try pinching the metal tightly onto the inner piece with pliers.*

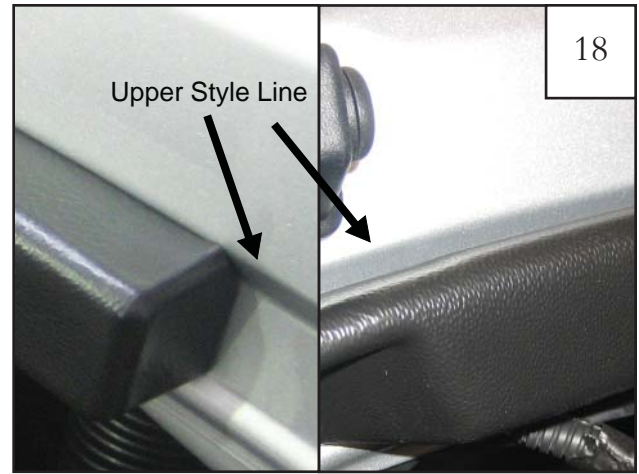


16

Secure inner piece D3 (and P3 for passenger side installation) to the sheet metal using the following **2 STEPS: Step 1** Position inner piece on fender, aligning with existing factory holes in sheet metal.



**Step 2** While holding the inner piece in place, install a plastic push retainer in each hole location. **Inner piece should rest along upper style line of sheet metal radius and not below it: see step 18.** NOTE: Foam insulation may need to be trimmed out of the holes.



**Picture on left:** Top edge of inner piece along upper style line

**Picture on right:** Top edge of inner piece tucked below upper style line; this forcibly angles and deforms inner pieces and flare is difficult or impossible to install



Secure inner piece D4 (and P4 for passenger side installation) to the sheet metal using the following **4 STEPS: Step 1** Position inner piece on fender, aligning with existing factory holes in sheet metal.



**Step 2** While holding the inner piece in place, install a plastic push retainer in the rearward three hole locations.



**Step 3** Slide a .700" Washer onto 5/16" Hex Head Bolt. Insert a bolt/washer assembly through inner flare piece and fender in frontward two locations and secure with 5/16" Nylok Nut. **Start the bolts but do not tighten.**



**Step 4** Using a 1/2" socket wrench and a 1/2" wrench, tighten all bolts until inner piece is snug against fender. **Do not overtighten: see step 23. Inner piece should rest along upper style line of sheet metal radius and not below it: see step 18.**



23

**Bolt on left:** Properly tightened; lower edge of inner piece runs straight  
**Bolt on right:** Overtightened; lower edge of inner piece bows down; if accidentally overtightened, remove inner piece completely before reinstalling



24

Secure inner piece D9 (and P9 for passenger side installation) to the sheet metal using the following **2 STEPS:** **Step 1** Position inner piece on fender, aligning with existing factory hole in sheet metal.



25

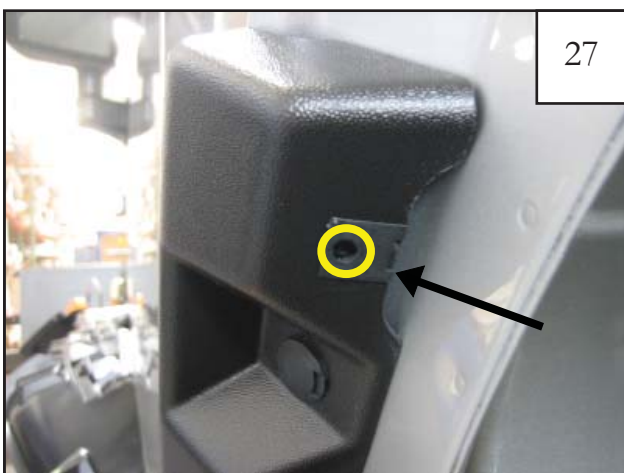
Upper Style Line

**Step 2** While holding the inner piece in place, install a plastic push retainer. **Inner piece should rest along upper style line of sheet metal radius and not below it: see step 18.**



26

Reinstall modified splash shield using supplied 1/4" Plastic Retainers (5 locations).



27

Before installing the outer flare, make sure that the speed clips on the inner pieces are centered over the predrilled holes.



28

Use one supplied alcohol prep pad to clean the *sheet metal* above each inner piece in preparation to tape the edge trim to the sheet metal. **This must be done for proper flare installation.**



29

Removed section of bottom fender pinch weld with bolt.



30

Place the outer flare over the inner pieces and push until snug against the vehicle surface. Make sure splash shield is tucked behind flare.



31

Use a scratch awl (or another pointed tool) to line up the speed clips with the outer flare holes (6 locations). If needed, use a flashlight to better locate the speed clips.



32

Hold flare in place on fender and start a pan head screw into each hole location and through the speed clip on inner structure (6 locations). *Do not tighten.*



33

After all screws have been started, tighten the pan head screws by *firmly* pressing the flare toward the vehicle *while* tightening.

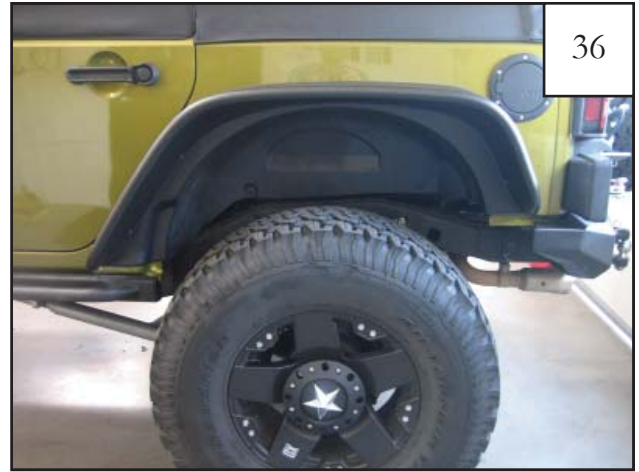


34

Peel outer tape liner from the double-taped edge trim. Push down *lightly* on the fender flare to create a small gap between the sheet metal and the edge trim. This makes it easier to pull the red liner.

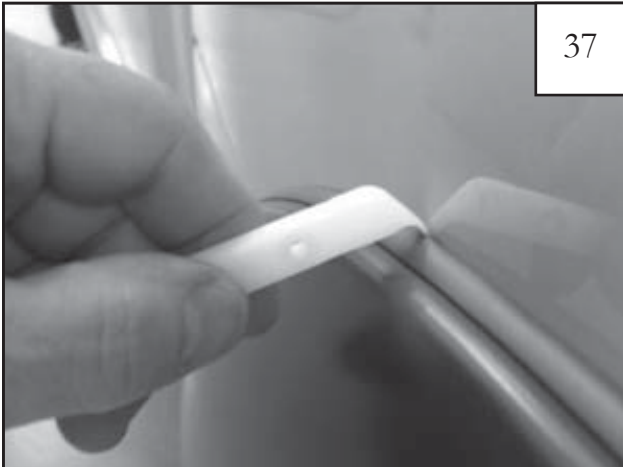


Firmly press the flare toward the vehicle for 10 seconds to adhere the tape to the vehicle surface. Repeat this process moving along the entire length of the flare.



Starting at one end, use the flat edge of the supplied edge trim tool to further adhere the edge trim to the vehicle surface. Slide the tool along the edge trim while pressing it in toward the vehicle surface.

## Edge Trim Tool Procedures:



Using supplied Edge Trim Tool (ET1-0002), seat edge trim against vehicle by hooking curved end under edge trim at one end of flare. Next, slide around outer edge of flare to the other end.



Using flat end of supplied Edge Trim Tool (ET1-0002), seat edge trim against flare by inserting straight end between edge trim and flare at one end. Next, slide around entire edge to the other end.