



STEP 1 – PRIOR TO INSTALLATION

- A) Bushwacker only approves installing the flares according to these written instructions with the hardware provided. WARNING:** Failure to install according to these instructions will invalidate the warranty. This includes, but is not limited to using alternative installation methods, hardware, or materials. **DO NOT USE:** Loctite, SuperGlue, or similar products on the hardware or the flares.
- B) Fit:** Verify the fit of the flares to vehicle. (Some filing, sanding, or cutting may be necessary to ensure proper fit).
- C) Painting:** (Optional) if paint is desired it must be done prior to installing flares on vehicle. Clean outer surface with a good grade degreaser. **DO NOT USE LACQUER THINNER OR ENAMEL REDUCER AS A DEGREASER.** Wipe outer surface thoroughly with a tack rag prior to paint. Application of plastic adhesion promoter for ABS plastic as per your paint system manufacturer's recommendations is required. Paint flares using a high quality enamel, or polyurethane automotive paint. If painting edge trim (not recommended), use a flex additive.
- D) Performance:** Using larger Tires may increase the area required to turn the vehicle. Some Tire/Rim combinations may require lowering bump stops and or installing steering stops to prevent tire from contacting flare.
- E) Exhaust System:** Modifications may be necessary to maintain a minimum 4" clearance between flares and exhaust pipes. (Exhaust gases should not vent directly onto flares)
- F) Metal Protection:** All exposed fasteners and bare metal should be treated with rust resistant paint **BEFORE** installing flares. Spray inner fender wells with undercoating **AFTER** flare attachments have been completed.
- G) Decals:** Flares may interfere with existing decals on vehicle. If you wish, remove decals prior to installation of flares.

Ford Cut-Out™ Fender Flares Front Pair

Front Part #20073-02

Rev-5 7/15/2014

For complete fitment info visit : www.bushwacker.com

TOOLS FOR EASY INSTALLATION:

- Socket Wrench
- T-15 Torx Bit
- Electric Drill
- 3/32" Drill Bit
- #2 Phillips Screwdriver
- Grease Pencil
- Measuring Tape / Ruler
- Pry Tool
- Awl (Optional)
- Right Angle Ratchet (Optional)

LIMITED LIFETIME WARRANTY AGAINST ANY MANUFACTURING DEFECTS

- To claim a warranty, you must provide Proof of Purchase.

Included in Hardware Kit:

- | | | | | | | | | | | | | | |
|----|---|----|---|----|---|----|---|----|---|----|---|----|---|
| 1. |  | 2. |  | 3. |  | 4. |  | 5. |  | 6. |  | 7. |  |
| | SW1-0066,
#8 x 5/8" Phillips
PH Drill Screw,
4 pcs | | SW1-0056,
#8 x 3/4"
PH Screw,
2 pcs | | SW1-0045,
#14-14 x 1"
Torx Screw,
16 pcs | | SP1-0009,
3/8" x 5/8" x .187"
Neo Black Spacer,
16 pcs | | SW1-0052,
T-45 Torx Bit,
1 pc | | ET1-0002,
Edge Trim Tool,
1 pc | | GP1-0005,
Large Wiper Style
Edge Trim,
139 inches |

STEP 2 - EDGE TRIM INSTALLATION

A. Peel two to three inches of red vinyl backing away from Edge Trim (GP1-0005) tape. Applying the adhesive side of the edge trim to the inner side of the flare, affix the edge trim to the top edge of the flare (the portion that comes in contact with the vehicle).

B. Press edge trim into place along the top edge of the flare in one-foot increments, pulling red vinyl backing free as you continue to work your way around the top edge of the flare.



Front Flare Installation Procedures (Passenger Side):



Using a #2 Phillips bit, remove four factory screws located inside wheel well (at locations shown).



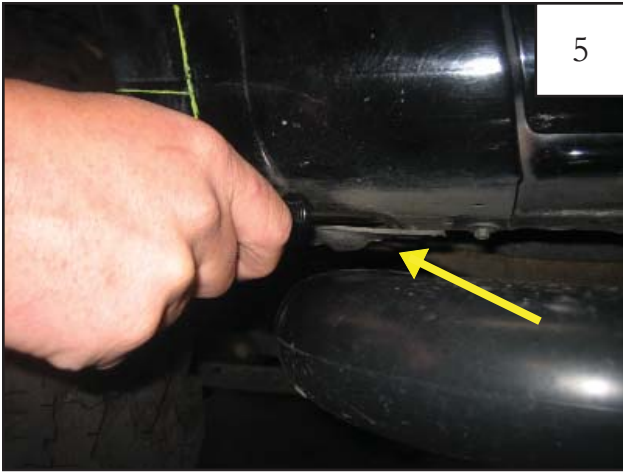
Use a trim tool to remove one plastic fastener located at bottom rear of wheel well as shown.



Starting at front of flare, pull firmly to release flare from fender, working your way to the back. You will hear popping noises as clips release. It is O.K. if clips break, they will be discarded.



Use a 7/32" socket to remove two bolts fastening the splash shield to the fender well. Retain one bolt for reinstallation in upper hole after cutting sheet metal.



Use a trim tool to remove one plastic fastener located at bottom rear of splash shield (next to bottom of door seam).



Pry splash shield loose from rear of wheel well area. There are a few factory clips that will pop.



Using a tape measure and a grease pencil, mark a line 2" toward door seam from fender lip (at bottom edge).



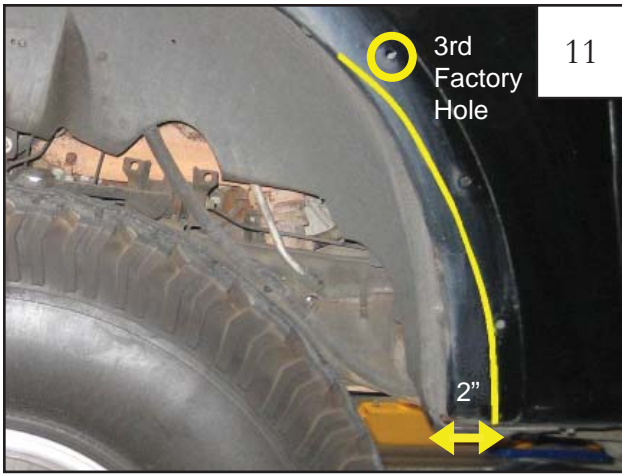
At fender lip, make a mark horizontal to the third factory hole up from bottom rear of fender well.



Third factory hole location. If the truck did not come with factory flares and there are no factory holes on fender, refer to Step 10.



For trucks without factory flares ONLY: Wrapping tape measure up from bottom edge of sheet metal of inside of fender, measure up 21" and make a mark on fender lip where tape measure intersects.



11

3rd
Factory
Hole

Draw a line from mark made in Step 7 up to mark made in Step 8 or Step 10, curving gradually to connect the marks. The line should be as shown.



12

At 1-1/2" intervals, make horizontal lines from fender lip to line drawn in Step 11. These lines will be cut later, forming tabs to be hammered in.



13

9"

At Pinch weld (inside splash shield), measure up 9" and make a mark. *NOTE: the pinch weld will not be cut, it will be hammered flat.*



14

Using a hammer, pound the pinch weld flat up to the 9" mark made in Step 13. Using a reciprocating saw or cut-off wheel, cut horizontal lines made in Step 12.



15

Use pliers or vise grips to bend the sheet metal tabs straight.



16

Push splash shield back into wheel well then, using a hammer, bend the tabs of sheet metal into fender well as shown. Replace upper factory bolt removed in Step 4.



Position fender flare on fender. Verify that parts fit and no additional cutting is needed. Maintaining part position, mark the hole locations in the fender using the pocket holes in the flare as guide (8 places).



Remove flare and drill hole locations with a 3/16" drill bit, making sure to keep the drill level and perpendicular to fender surface.



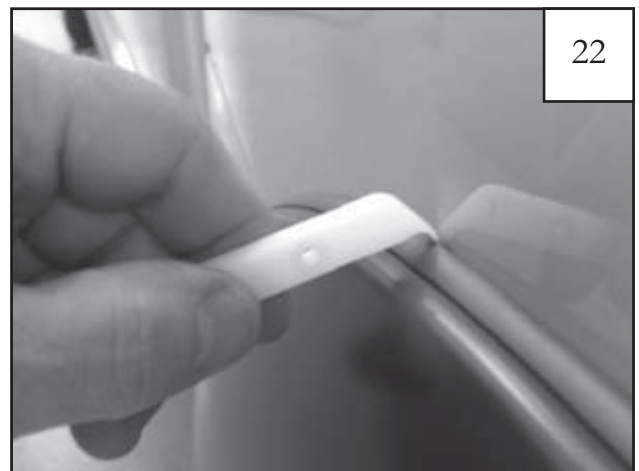
Insert a kit-supplied Screw (SW1-0045) through a pocket hole on flare.



Install a kit-supplied Spacer (SP1-0009) on each Screw from the backside of the pocket using drill with supplied Torx Bit (SW1-0052). Screw threads must protrude through spacer for proper attachment of flare. *Repeat for all pockets.*



Holding the flare in position on fender, align and start the Screws through the holes in the vehicle. **Make sure edge trim isn't folded over before tightening screws.**



Using supplied Edge Trim Tool (ET1-0002), seat edge trim against vehicle by hooking curved end under edge trim at one end of flare. Next, slide around outer edge of flare to the other end.



23

Using flat end of supplied Edge Trim Tool (ET1-0002), seat edge trim against flare by inserting straight end between edge trim and flare at one end. Next, slide around entire edge to the other end.



24

Tighten each Screw using supplied Torx Bit (SW1-0052) at 24 in-lb (2 ft-lb) speed. **Over-tightening screws may cause them to strip!**



25

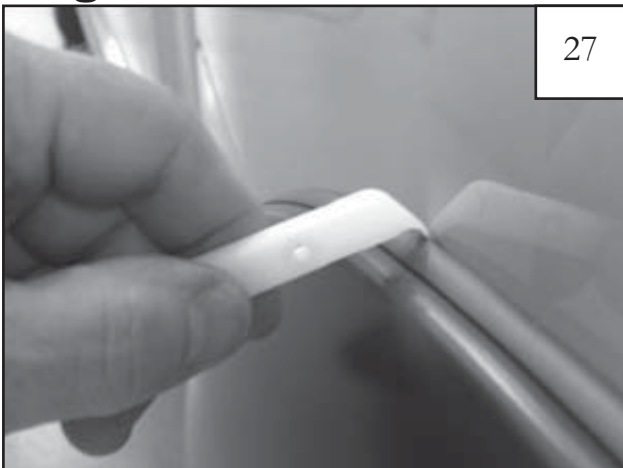
Use a #2 Phillips bit to install two supplied Screws (SW1-0066) through fender flare and into sheet metal of wheel well at locations shown (there are pockets in fender flare at these locations)



26

Install one supplied Screw (SW1-0056) through the lower rear pocket in fender flare and into sheet metal.

Edge Trim Tool Procedures:



27

Using supplied Edge Trim Tool (ET1-0002), seat edge trim against vehicle by hooking curved end under edge trim at one end of flare. Next, slide around outer edge of flare to the other end.



28

Using flat end of supplied Edge Trim Tool (ET1-0002), seat edge trim against flare by inserting straight end between edge trim and flare at one end. Next, slide around entire edge to the other end.