



Toyota "OE" Style® Fender Flares Set of 4

Set Part #30909-02

Rev-6 7/23/2013

For complete fitment info visit : www.bushwacker.com

STEP 1 – PRIOR TO INSTALLATION

- A) Bushwacker only approves installing the flares according to these written instructions with the hardware provided. WARNING:** Failure to install according to these instructions will invalidate the warranty. This includes, but is not limited to using alternative installation methods, hardware, or materials. **DO NOT USE:** Loctite, SuperGlue, or similar products on the hardware or the flares.
- B) Fit:** Verify the fit of the flares to vehicle. (Some filing, sanding, or cutting may be necessary to ensure proper fit).
- C) Painting:** (Optional) if paint is desired it must be done prior to installing flares on vehicle. Clean outer surface with a good grade degreaser. **DO NOT USE LACQUER THINNER OR ENAMEL REDUCER AS A DEGREASER.** Wipe outer surface thoroughly with a tack rag prior to paint. Application of plastic adhesion promoter for ABS plastic as per your paint system manufacturer's recommendations is required. Paint flares using a high quality enamel, or polyurethane automotive paint. If painting edge trim (not recommended), use a flex additive.
- D) Performance:** Using larger Tires may increase the area required to turn the vehicle. Some Tire/Rim combinations may require lowering bump stops and or installing steering stops to prevent tire from contacting flare.
- E) Exhaust System:** Modifications may be necessary to maintain a minimum 4" clearance between flares and exhaust pipes. (Exhaust gases should not vent directly onto flares)
- F) Metal Protection:** All exposed fasteners and bare metal should be treated with rust resistant paint BEFORE installing flares. Spray inner fender wells with undercoating AFTER flare attachments have been completed.
- G) Decals:** Flares may interfere with existing decals on vehicle. If you wish, remove decals prior to installation of flares.









TOOLS FOR EASY INSTALLATION:

- Socket Wrench
- 10mm Socket
- #2 Phillips Screwdriver
- Flat Head Screwdriver
- Grease Pencil

LIMITED LIFETIME WARRANTY AGAINST ANY MANUFACTURING DEFECTS

- To claim a warranty, you must provide Proof of Purchase.

Included in Hardware Kit:

- | | | | | | | | | | | | | | |
|----|---|----|---|----|---|----|---|----|--|----|---|----|---|
| 1. |  | 2. |  | 3. |  | 4. |  | 5. |  | 6. |  | 7. |  |
| | CL1-0005,
Dacromet "U"
Spring Clip,
6 pc | | GP1-0005,
Large Wiper Style
Edge Trim,
324 inches | | MT1-0002,
1" x1" x.017"
Black Tab,
6 pcs | | NU1-0013,
#14 Black "U"
Spring Nut,
2 pcs | | SW1-0036,
M6-.3 x 20mm Hex
Magni Black Screw,
18 pcs | | SW1-0050,
10 x 5/16 Phillips
Truss Screw,
6 pcs | | SW1-0057,
#14 x 3/4" Phillips
Truss Tap Screw,
2 pcs |
| 8. |  | | | | | | | | | | | | |
| | ET1-0002,
Edge Trim Tool,
1 pc | | | | | | | | | | | | |

STEP 2 - EDGE TRIM INSTALLATION

NOTE: Edge trim (GP1-0005) will be installed on the FLARES only, not the inner pieces.

A. Peel two to three inches of red vinyl backing away from Edge Trim (GP1-0008) tape. Applying the adhesive side of the edge trim to the inner side of the flare, affix the edge trim to the top edge of the flare (the portion that comes in contact with the vehicle).

B. Press edge trim into place along the top edge of the flare in one-foot increments, pulling red vinyl backing free as you continue to work your way around the top edge of the flare.



Front Flare Installation Procedures (Driver's Side):



Using a Phillips screwdriver, remove plastic fastener from front of wheel well. Note: For the Limited version, a flat head screw driver will be needed



Using a socket wrench with a 10mm socket, remove top screw from factory mud guard as shown.



Remove screw from underside of factory mud guard. Note: If vehicle is equipped with running boards, running boards may need to be removed in order to access this screw.



Hold the flare firmly on the fender. Starting with the second hole from the front of the flare, mark three clip locations with a grease pencil.



Clip locations.



Remove flare from fender. Center a supplied Black Tab over each mark made in Step 4.



Slide a supplied "S" Clip over each Tab.



Slide a supplied "U" Clip over the fender lip, aligning with forward-most hole in fender. Note: For the Limited version, skip this step.



Replace flare on fender, aligning holes in clips. Start three supplied Serrated-Flange Screws through three holes in flare and into "S" Clips installed in Step 7.



Start three supplied Hex Screws through three rear holes in flare and into factory holes in rear of wheel well.



Hex Screws.

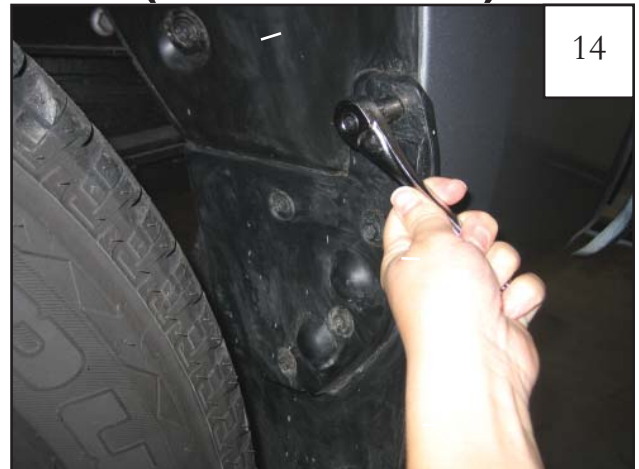


Start a supplied Truss Head Screw through forward-most hole in flare and into "U" Clip installed in Step 8. Note: For the Limited version, install this screw directly into hole in fender. Ensure flare is properly positioned and tighten all screws.

Rear Flare Installation Procedures (Driver's Side):



Using a socket wrench with a 10mm socket, remove lower screw from front of rear wheel well as shown.



Remove top screw from mud flap as shown.



Remove screw from underside of factory mud guard.

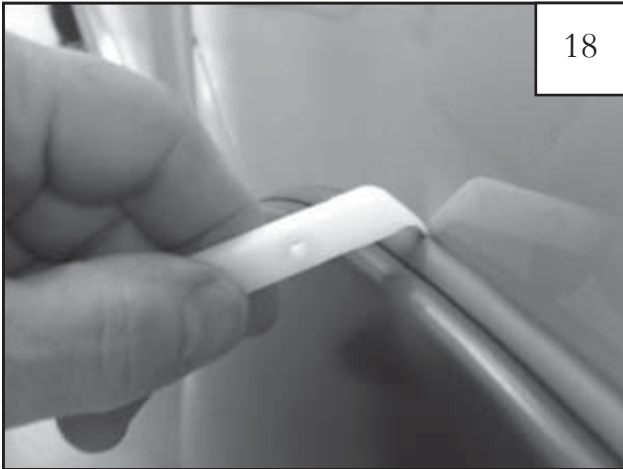


Hold the flare firmly on the fender. Start a supplied Hex Screw through each hole in flare and into hole in fender (six places).



Ensure Flare is properly positioned and tighten all screws.

Edge Trim Tool Procedures:



Using supplied Edge Trim Tool (ET1-0002), seat edge trim against vehicle by hooking curved end under edge trim at one end of flare. Next, slide around outer edge of flare to the other end.



Using flat end of supplied Edge Trim Tool (ET1-0002), seat edge trim against flare by inserting straight end between edge trim and flare at one end. Next, slide around entire edge to the other end.