



## STEP 1 – PRIOR TO INSTALLATION

- A) Bushwacker only** approves installing the flares according to these written instructions with the hardware provided. **WARNING:** Failure to install according to these instructions will invalidate the warranty. This includes, but is not limited to using alternative installation methods, hardware, or materials. **DO NOT USE:** Loctite, SuperGlue, or similar products on the hardware or the flares.
- B) Fit:** Verify the fit of the flares to vehicle. (Some filing, sanding, or cutting may be necessary to ensure proper fit).
- C) Painting:** (Optional) if paint is desired it must be done prior to installing flares on vehicle. Clean outer surface with a good grade degreaser. **DO NOT USE LACQUER THINNER OR ENAMEL REDUCER AS A DEGREASER.** Wipe outer surface thoroughly with a tack rag prior to paint. Application of plastic adhesion promoter for ABS plastic as per your paint system manufacturer's recommendations is required. Paint flares using a high quality enamel, or polyurethane automotive paint. If painting edge trim (not recommended), use a flex additive.
- D) Performance:** Using larger Tires may increase the area required to turn the vehicle. Some Tire/Rim combinations may require lowering bump stops and or installing steering stops to prevent tire from contacting flare.
- E) Exhaust System:** Modifications may be necessary to maintain a minimum 4" clearance between flares and exhaust pipes. (Exhaust gases should not vent directly onto flares)
- F) Metal Protection:** All exposed fasteners and bare metal should be treated with rust resistant paint **BEFORE** installing flares. Spray inner fender wells with undercoating **AFTER** flare attachments have been completed.
- G) Decals:** Flares may interfere with existing decals on vehicle. If you wish, remove decals prior to installation of flares.

## RAM "OE" Style® Fender Flares Rear Pair

Rear Part #50040-02

Rev-5 10/10/2013

For complete fitment info visit : [www.bushwacker.com](http://www.bushwacker.com)

### TOOLS FOR EASY INSTALLATION:

- Utility Knife
- #2 Phillips Driver
- Socket Wrench
- 8 mm Socket
- 3/8" Wrench
- Awl or Similar Pointed Tool

### LIMITED LIFETIME WARRANTY AGAINST ANY MANUFACTURING DEFECTS

- To claim a warranty, you must provide Proof of Purchase.

## Included in Hardware Kit:

- |    |   |    |   |    |   |    |   |    |  |
|----|---|----|---|----|---|----|---|----|--|
| 1. |  | 2. |  | 3. |  | 4. |  | 5. |  |
|    | CL1-0022,<br>#10 "U" Clip,  |    | ET1-0002,<br>Edge Trim Tool,  |    | GP1-0005,<br>Large Wiper Style<br>Edge Trim,  |    | MT1-0014,<br>1" x1.5" x.01"<br>Black Tab,   |    | SW1-0056,<br>#8 x 3/4"<br>PH Screw,  |
|    | 2 pcs   |    | 1 pc  |    | 180 inches  |    | 2 pcs   |    | 12 pcs   |

## STEP 2 - EDGE TRIM INSTALLATION

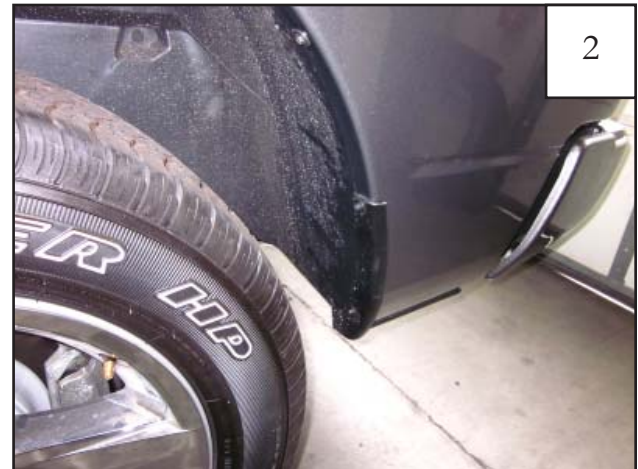
- Peel two to three inches of red vinyl backing away from Edge Trim (GP1-0005) tape. Applying the adhesive side of the edge trim to the inner side of the flare, affix the edge trim to the top edge of the flare (the portion that comes in contact with the vehicle).
- Press edge trim into place along the top edge of the flare in one-foot increments, pulling red vinyl backing free as you continue to work your way around the top edge of the flare.



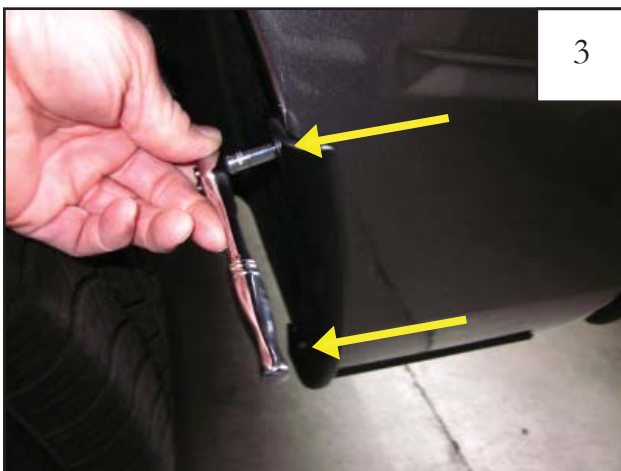
## Rear Flare Installation Procedures (Driver's Side):



1  
Remove these five factory installed screws using an 8 mm socket wrench. Keep screws for installation of the rear flare. X's indicate a factory screw that will not be removed.



2  
2013 Models and up : You will need to remove the plastic factory wheel well piece from the rear of the wheel well. Please follow steps 3 & 4.



3  
Using a socket and wrench remove the two factory screws from the plastic wheel well piece.



4  
Using a screwdriver remove the two factory fasteners from the bottom side of the plastic wheel well piece. Remove plastic wheel well piece at this time.



Install speed clip in this location. See steps 6-8.



Install plastic tab over existing factory hole.



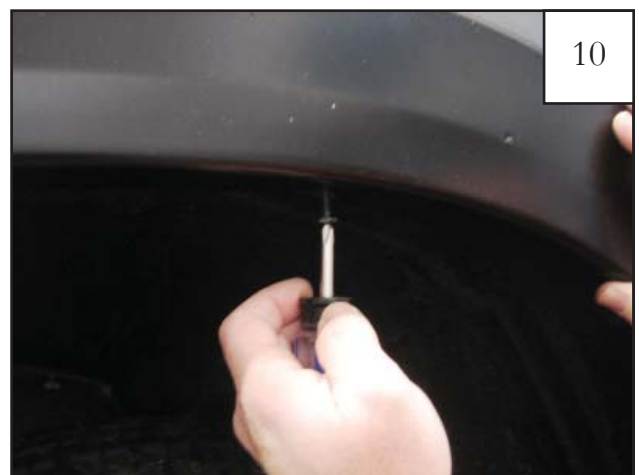
Install speed clip over plastic tab.



Using an awl or similar pointed tool, poke a hole through plastic tab using the speed clip hole as a guide.



Kit supplied screw and factory installed screw locations. Install the kti supplied screw at the top of flare first for easier installation. See steps 10 & 11.



Start #8 pan-head screw using a Phillips screwdriver. *Do not tighten.* Pictured here is the top center screw location of the rear wheel well.



11

Hold flare in place while you start factory screws using an 8 mm socket wrench. *Do not tighten.*



12

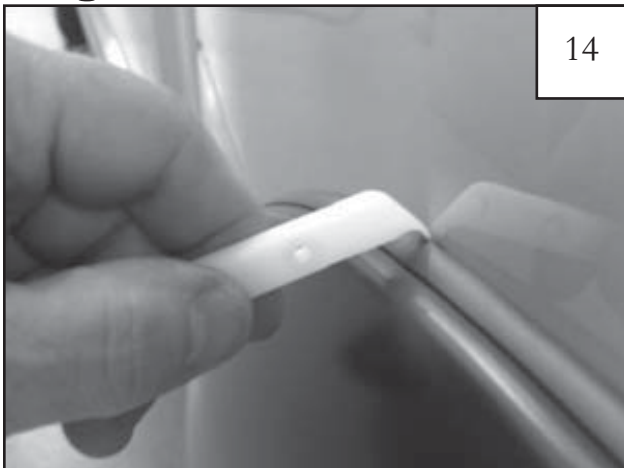
Press firmly on flare and tighten all screws.



13

Completed rear flare installation.

## Edge Trim Tool Procedures:



14

Using supplied Edge Trim Tool (ET1-0002), seat edge trim against vehicle by hooking curved end under edge trim at one end of flare. Next, slide around outer edge of flare to the other end.



15

Using flat end of supplied Edge Trim Tool (ET1-0002), seat edge trim against flare by inserting straight end between edge trim and flare at one end. Next, slide around entire edge to the other end.