



INSTALLATION INSTRUCTIONS
PART NO. D24105 (B-PS)
2009-14 DODGE RAM 1500 CREW CAB P/U 4DR 2/4WD
2010-15 2500, 3500 CREW CAB P/U 4DR 2/4WD

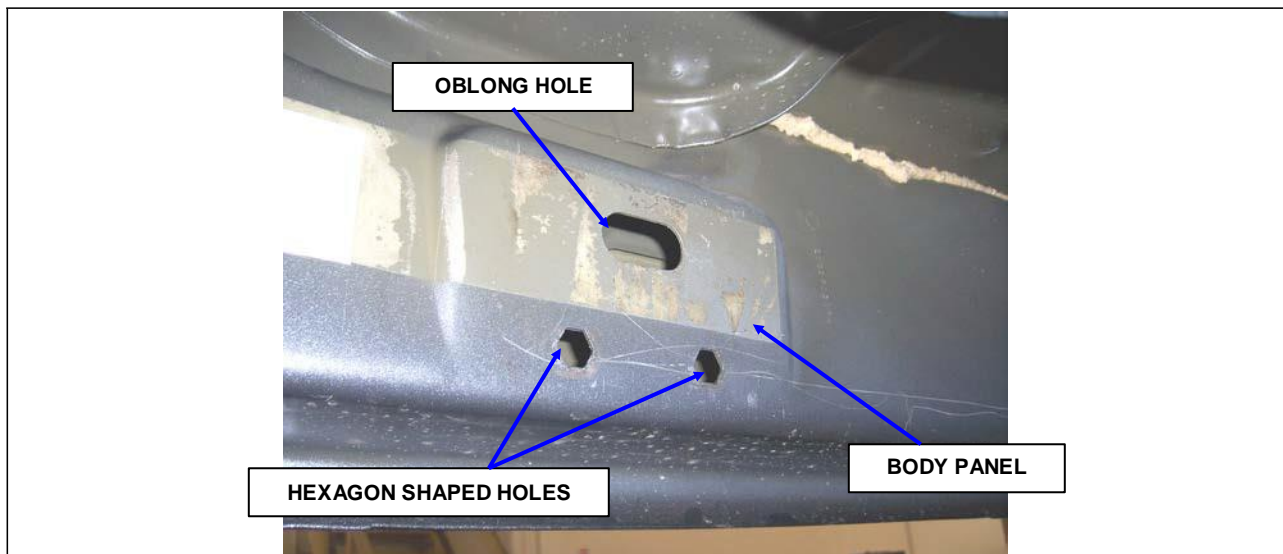
Do not attempt to install this product on any vehicle other than the one it is designed for and listed above!

PACKING LIST

<u>QTY</u>	<u>PARTS DESCRIPTION</u>	<u>QTY</u>	<u>PARTS DESCRIPTION</u>
24	3/8" X 1 1/4" HEX BOLTS	6	4105TP T-PLATE
42	3/8" FLAT WASHERS	6	D06 SIDE STEP MOUNTING BRACKETS
30	3/8" LOCK WASHERS	1	D24105P PASSENGER SIDE STEP
18	3/8" HEX NUTS	1	D24105D DRIVER SIDE STEP

INSTALLATION INSTRUCTIONS

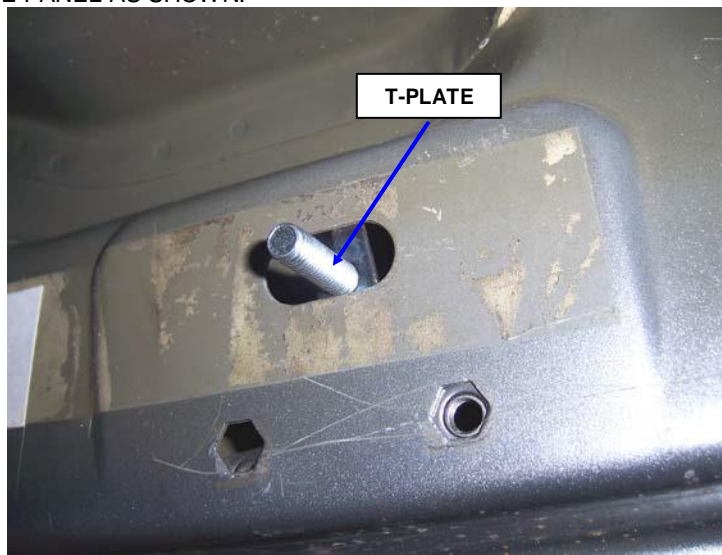
READ THE INSTRUCTIONS COMPLETELY BEFORE YOU BEGIN THE INSTALLATION



STEP 1. THIS INSTALLATION USES (3) MOUNTING BRACKETS PER SIDE. BEGIN BY INSTALLING THE PASSENGER SIDE FRONT BRACKET. LOCATE THE (2) HEXAGON SHAPED HOLES IN THE UNDERSIDE OF THE BODY PANEL AT THE FRONT OF THE CAB AND REMOVE THE TAPE COVERING THE OBLONG HOLE.



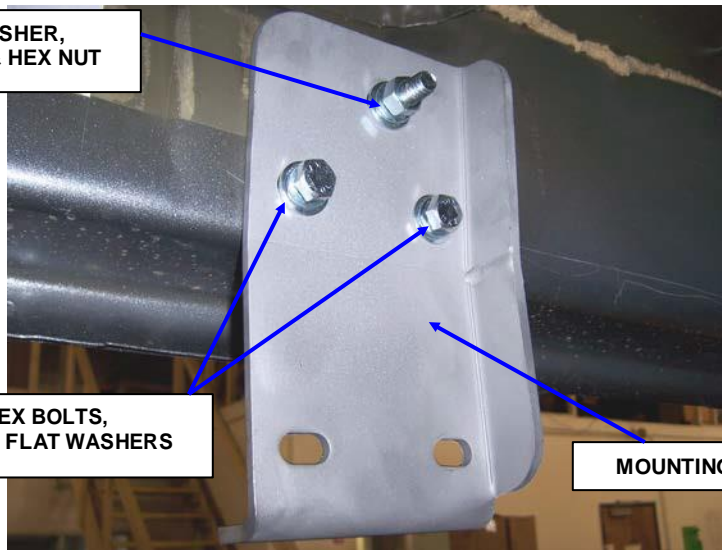
STEP 2. INSERT (1) OF THE T-PLATES THROUGH THE OBLONG HOLE IN THE BODY PANEL AND POSITION THE PLATE INSIDE THE PANEL AS SHOWN.



**3/8" FLAT WASHER,
LOCK WASHER & HEX NUT**

**3/8" X 1 1/4" HEX BOLTS,
LOCK WASHERS, & FLAT WASHERS**

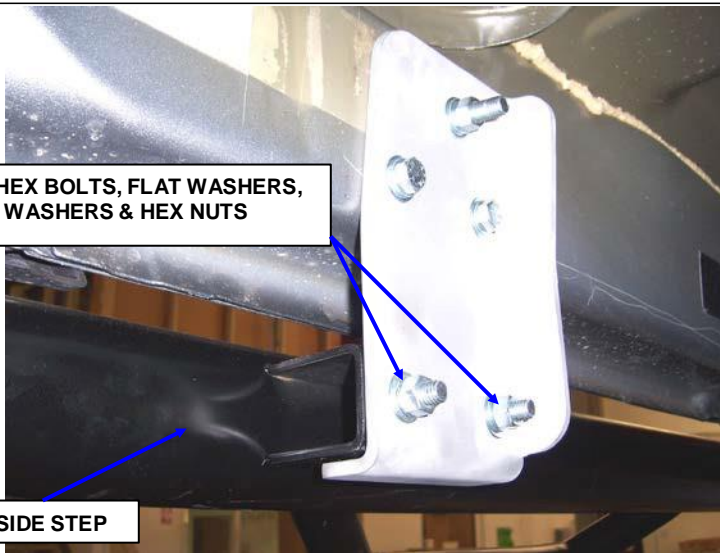
MOUNTING BRACKET



STEP 3. ATTACH ONE OF THE MOUNTING BRACKETS TO THE BODY PANEL USING THE T-PLATE (2) 3/8" X 1 1/4" HEX BOLTS, (3) 3/8" FLAT WASHERS, (3) 3/8" LOCK WASHERS AND (1) 3/8" HEX NUT. HAND TIGHTEN.



STEP 4. REPEAT THE ABOVE PROCEDURE TO INSTALL THE CENTER AND REAR MOUNTING BRACKETS.



STEP 5. ATTACH THE PASSENGER SIDE STEP TO THE MOUNTING BRACKETS USING (2) 3/8" X 1 1/4" HEX BOLTS, (4) FLAT WASHERS, (2) LOCK WASHERS AND (2) HEX NUTS FOR EACH BRACKET.



STEP 6. ALIGN THE SIDE STEP WITH THE VEHICLE AND TIGHTEN ALL MOUNTING BRACKET AND SIDE STEP NUTS AND BOLTS. REPEAT THE ABOVE PROCEDURE TO INSTALL THE DRIVER SIDE BRACKETS AND SIDE STEP.