



WARN STANDARD AND PREMIUM INTERNAL MOUNT HUBLOCK INSTRUCTIONS

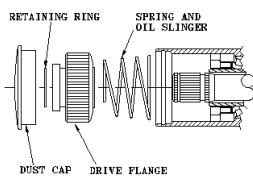
P/N 20990

P/N 9790

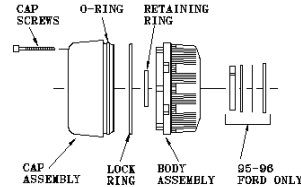
REMOVAL OF EXISTING HUBLOCKS

1. Remove existing hublocks. **WARNING!** If removing an automatic hublock that uses 3 bolts to retain the chrome cover, a conversion kit will be needed. (Use Warn P/N 32720)
2. Use the illustrations below to help with the removal of the old hublocks. When removing the lock ring, use MILD FORCE with a thin screwdriver or pick/hook.
3. Remove **ALL** retaining rings on the splined axle shaft.

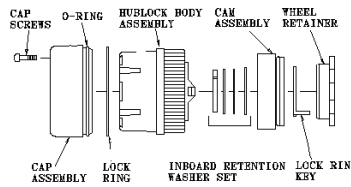
DRIVE FLANGE



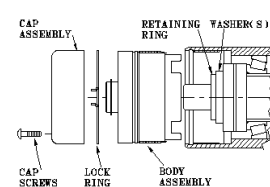
MANUAL HUBLOCK



WARN AUTOMATIC



OTHER AUTOMATIC

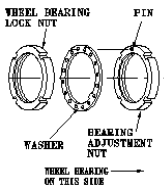


4. Verify that the spindle nuts are installed and torqued to manufacturer's specifications. Hublock damage will occur if the spindle nuts or wheel bearings are loose! Damage to hublocks due to loose spindle nuts or wheel bearings will void warranty!

INSTALLATION OF NEW HUBLOCKS

NOTE: WHEN REMOVING ANY 3 HOLE CHROME CAP AUTOMATIC HUB, PURCHASE AND INSTALL CONVERSION KIT P/N 32720

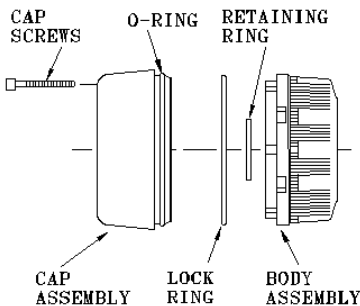
5. Separate body assembly from cap assembly (see hublock picture below)
6. Install body assembly and large lock ring into wheel hub housing. (Remove any retaining rings on the splined axle shaft if present)
7. Check the clearance between the hublock body and the spindle nuts. The clearance may be checked by the following method. Remove 2 of the socket head screws from the box and insert them 180 degrees apart into the body of the hublock. Hold onto the screws and attempt to move the body assembly in and out of the wheel hub. If some float is evident, the installation is correct. Remove the 2 socket head screws. **IF THERE IS NO FLOAT EVIDENT, DO NOT PROCEED WITH THE INSTALLATION UNTIL THE CONDITION IS CORRECTED.** To correct this condition, perform the following steps.



- A. Remove the locking, body assembly, and wheel bearing lock nut
- B. Install the washer so that it is seated against the bearing adjustment nut, and tighten the wheel bearing lock nut to the manufacturer's recommended torque. The pin in the bearing adjustment nut **MUST** be seated into a hole in the washer when installed. If the washer is not aligned correctly the wheel bearing lock nut will be approximately 1/8 inch too far outboard and will interfere with the hublock.
- C. Reinstall the hublock body assembly and check for clearance. If correct, proceed with the installation. If not, repeat step B.

8. Install the Axle retaining ring. If necessary, a pry bar can be inserted into the knuckle (universal joint) to hold the axle shaft outboard while installing the axle retaining ring.

NOTE: Some early model solid front axle may not accept axle retaining rings (77 1/2-79 Ford's, 81-84 and some 85 Chevy/GMC's). Use them if they can be installed correctly (outboard of the hub body) but their use is not mandatory and no durability loss will be suffered. ALL FORDS WITH TWIN TRACTION BEAM FRONT AXLES (INDEPENDENT FRONT SUSPENSIONS) MUST HAVE AN AXLE RETAINING RING INSTALLED.



9. Dial the cap into the free position. Place cap assembly on body using the socket head screws to align the cap to the body. (The standard hublock will also have to align the 3 tabs on the cap assembly) Insert the six socket head cap screws and torque to the following values. Standard Hublock P/N 9790, 45-55 in-lbs (**NOT Ft-Lbs**). Premium Hublock P/N 20990, 25-30 in-lbs (**NOT Ft-Lbs**)
10. To **CHECK FOR PROPER ENGAGEMENT** dial both hublocks to **LOCK**, raise the front left corner of the vehicle off the ground. Spin the lifted tire. The driveline will turn if the hublocks are engaged properly
11. To **CHECK FOR PROPER DISENGAGEMENT** dial the lifted wheel hublock into **FREE** and spin the lifted tire. If the driveline does not turn **AND** there are not any ratcheting sounds, the hublock is disengaging properly. Repeat the process for the right side

SERVICING INSTRUCTIONS: Service at the same interval as wheel bearings. Clean and **lightly** grease internal working surfaces.

P/N 61420C0



WARN 4WD HUBS

Installation Instructions for Standard and Premium Internal Mount Hublocks

Premium Hublock P/N 20990

Standard Hublock P/N 9790

OPERATING INSTRUCTIONS

- *ONLY use fingers to turn dials. **DO NOT USE PLIERS.**
- *Set the hublock dials to "FREE" and transfer case to 2-high for all driving that does not require four wheel drive.
- *To engage four wheel drive set the hublock dials to "LOCK" and set the transfer case to 4-high or 4-low.
- *Return the transfer case to 2-high before disengaging hublocks.
- *Do not drive on hard surface roads in 4-wheel drive because it can cause drive train damage.
- *Do not move the vehicle if the hubs are anywhere between "FREE" and "LOCK" or it will damage the hublocks.
- *Driving with only one hublock engaged can cause drive train damage.
- *Driving with the hublocks in "FREE" and transfer case in 4-low can cause drive train damage.
- *To ensure lubrication of the front axle, engage hublocks for a minimum of one mile monthly.

WARN PRODUCTS LIMITED LIFETIME WARRANTY STATEMENT

Warn Industries, Inc. (Warn) warrants Parts and labor, excepting electrical components, directly to the first purchaser of each Warn products against factory defects in material and workmanship for as long as said purchaser owns the vehicle that the products was originally installed on. Warn warrants electrical components of the products, where present, to the first purchaser against defects in material and workmanship appearing under normal use and service for a period of one (1) year from the date of purchase. To obtain any warranty coverage, it is absolutely necessary that you present proof of purchase and warranty period verification acceptable to Warn, such as a copy of the purchase receipt. Returning a fully completed registration card to Warn within ninety (90) days of the date of purchase is a condition precedent to warranty coverage. If you discover a covered defect, Warn will, at its option, repair, replace or refund the purchase price of this products or products parts at no charge to you, provided you return it during the applicable warranty period, transportation charges prepaid, to Warn Industries' Service Department or Factory Authorizes Servicing Distributor. (You can obtain additional information from Warn directly at the address printed below.) Please attach your name, address, telephone number, a description of the problem and a copy of the bill of sale bearing the appropriate Warn serial numbers as proof of original retail purchase, to each product returned for warranty service. Exclusions from this warranty are those listed below as well as any conditions determined by Warn Industries to have been caused by abnormal use or service.

This warranty applies only to products manufactured by Warn, which can be identified by the "Warn" trademark, tradename, or logo affixed to them. This warranty applies only to products purchased after November 1,1987. Warn does not warrant any products that are not Warn products. This warranty does not apply if accident, abuse, misuse, collision, overloading, exhaust, misapplication, improper installation, improper use, improper service or modification has damaged the product without written permission from Warn. This warranty does not apply if any Warn serial number has been removed or defaced. In addition, commercial, or industrial use or application, or any hoisting application of the product without prior written approval of Warn voids the entire warranty.

EXCEPT AS EXPRESSLY STATED HEREIN, THERE ARE NO WARRANTIES, EXPRESS OR IMPLIED, INCLUDING IMPLIED WARRANTIES OF MERCHANTABILITY AND FITNESS FOR A PARTICULAR PURPOSE. ANY IMPLIED WARRANTY OF MERCHANTABILITY OR FITNESS FOR A PARTICULAR PURPOSE WHICH BY LAW MAY NOT BE EXCLUDED, IS LIMITED IN DURATION TO ONE (1) YEAR FROM THE DATE OF ORIGINAL RETAIL PURCHASE OF THIS PRODUCT.

THE WARRANTY AND THE REMEDIES SET FORTH ABOVE ARE EXCLUSIVE AND IN LIEU OF ALL OTHERS, ORAL OR WRITTEN, EXPRESSED OR IMPLIED.

No Warn dealer, agent or employee is authorized to make any modification, extension or addition to this warranty.

IN NO EVENT IS WARN RESPONSIBLE FOR SPECIAL INCIDENTAL OR CONSEQUENTIAL DAMAGES RESULTING FROM ANY BREACH OF WARRANTY, OR UNDER ANY OTHER LEGAL THEORY, INCLUDING, BUT NOT LIMITED TO LOST PROFITS, DOWN TIME, GOODWILL, DAMAGE TO OR REPLACEMENT OF EQUIPMENT AND PROPERTY, LOSS OF USE OF THE PRODUCT OR OF ANY ASSOCIATED EQUIPMENT, OR COST OF SUBSTITUTED PRODUCTS.

Some states do not allow the exclusion or limitation of incidental or consequential damages or limitation on how long an implied warranty lasts, so the above limitation or exclusion may not apply to you. This warranty give you specific legal rights, and you may also have other rights which vary from state to state. Warn reserves the right to change product design without notice or obligation to modify previously manufactured products.

Warranty inquires and products specified above returned for warranty service should be sent to:

WARN INDUSTRIES
Customer Service Department
12900 SE Capps Road
Clackamas, OR 97015
1-800-543-WARN

Products covered by this Warranty

Recreational winches (all except commercial products)
Locking Hubs

Exclusions to this Warranty

Finish and wire rope
Finish