



**UNDER THE HOOD. *ABOVE THE REST.***

Equipped with AEM® Dryflow™ Filter

# **INSTALLATION INSTRUCTIONS**

## **21-813C (GUN METAL GRAY FINISH)**

---

2016-24

CHEVROLET

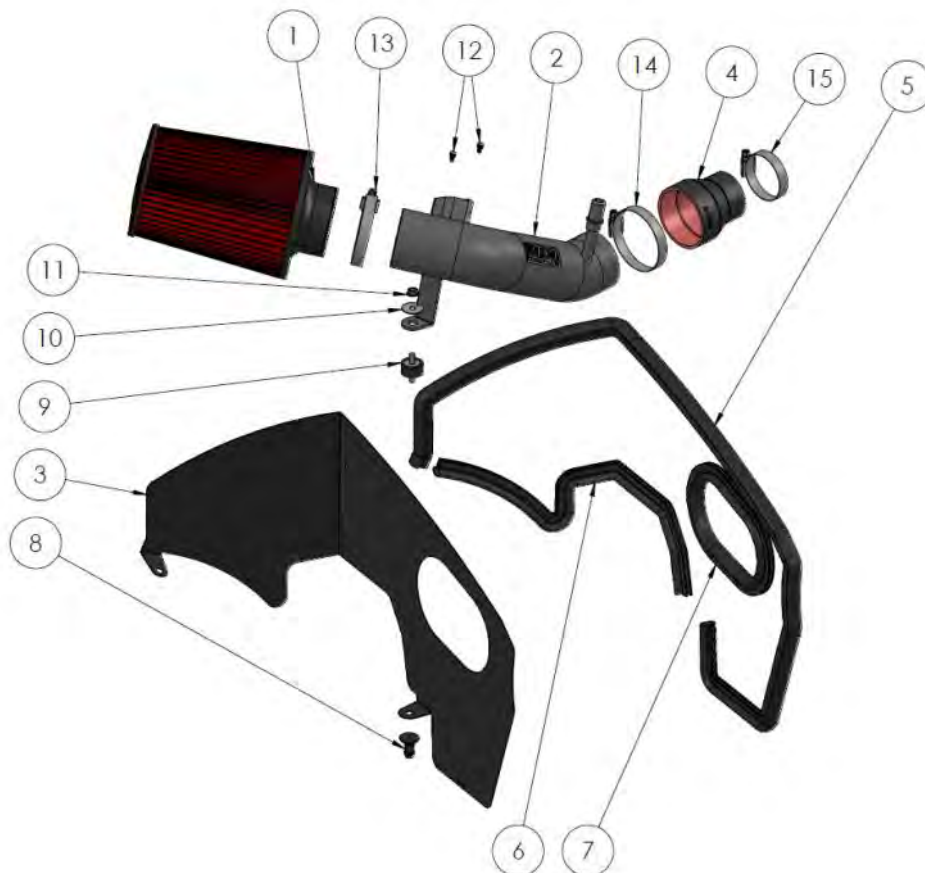
MALIBU

1.5T

**NOT LEGAL FOR SALE OR USE ON ANY POLLUTION  
CONTROLLED MOTOR VEHICLE IN CALIFORNIA OR  
STATES ADOPTING CALIFORNIA EMISSION PROCEDURES.**

**See [aemintakes.com](http://aemintakes.com) for CARB status on each part for a specific vehicle**

ITEM NO.	PART NUMBER	DESCRIPTION	QTY.
1	21-2027D	AIR FILTER; 2.75" X 7" DRYFLOW	1
2	2-1594C	INTAKE TUBE; 2.75" X 13"L, GUNMETAL GRAY	1
3	20-8585	HEAT SHIELD	1
4	5-1045	HOSE; 2.75" TO 2" ID X 3" L	1
5	102485	EDGE TRIM; 48"L	1
6	102494	EDGE TRIM; 20"L	1
7	102500	EDGE TRIM; 18"L	1
8	8-186-1	MOUNT, PLASTIC AIRBOX, NYLON	1
9	07027	STUD; M6-1.00 M/M, RUBBER MNTD	1
10	08160	WASHER; 1"D X 1/4 HOLE FENDER	1
11	444.460.04	NUT; M6 HEX SERRATED	1
12	1-2023	BOLT; 8-32 X 5/16" SOCKET	2
13	9444	HOSE CLAMP, 2.31-3.25"	1
14	9440	HOSE CLAMP, 2.15-3"	1
15	9428	HOSE CLAMP #28	1



Read and understand these instructions **BEFORE** attempting to install this product. Failure to follow installation instructions and not using the provided hardware may damage the intake tube, throttle body and engine. If you need any assistance please call 1-800-858-3333 to speak with a representative in our Customer Service Center before returning the product.

## 1. Preparing Vehicle

- a. Make sure vehicle is parked on level surface.
- b. Set the parking brake.
- c. If engine has run in the past two hours, let it cool down.
- d. Disconnect negative battery terminal.
- e. Do not discard stock components after removal of the factory system.
- f. Open the air intake kit package and make sure all parts are included.

<b>Tools Needed:</b>	4mm Hex Key
T20 Torx Bit	5/8" AC/fuel line disconnect tool
10mm Socket	
12mm Wrench	<b>Optional:</b>
13mm Socket	Small Torque Wrench
Socket Driver	
Side Cutters	

## 2. Removal of stock system



a. Disconnect the Mass Air Flow (MAF) sensor connector and harness ties from the sensor and air box.



b. Use a 5/8" AC/fuel line disconnect tool to release the PCV connection. Pull the PCV line free and away from the fitting.



c. Loosen the hose clamp at the turbo side of the factory air hose.



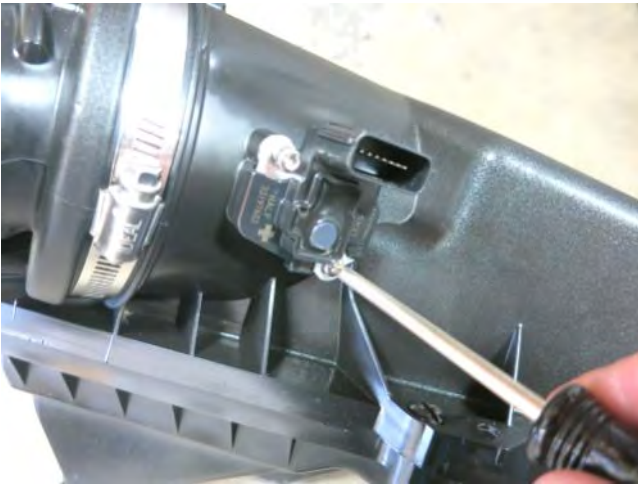
d. Release the air box from its rubber grommets by pulling up gently on the air box as shown.



e. Lift the air box and intake hose up and out of the engine bay. Remove the rear grommet and keep the front grommet installed as shown.



f. Remove the nut securing the engine mount brace. This nut will be reused in step 3i.



g. Remove the MAF sensor from the air box using the T20 Torx bit. The MAF sensor will be reused in step 3a. **Do not discard any of your stock equipment!**



### 3. Installation of AEM® intake system.

a. When installing the intake system, do not completely tighten the hose clamps or mounting hardware until



a. Install the MAF sensor into your AEM intake tube using the provided screws.



b. Assemble the heat shield with the edge trim, rubber mount, and nylon air box mount. Use a 12mm wrench to tighten the air box mount.



c. The edge trim may need to be trimmed as shown to clear the AC line bracket. You may temporarily install the heatshield and close the hood to check for clearance issues.



d. Install the AEM intake tube into the heatshield and loosely secure with the provided nut and washer as shown.



e. Install the provided coupler with the small end at the turbo. Use the provided hose clamps. Open the hose clamps all the way prior to installation. Tighten the turbo side clamp at this time to 30 in-lb.



f. Install the assembly into the car as shown . Push the heatshield mount into the grommet and align the tab with the engine brace stud. Guide the intake tube into the coupler as shown in step 3g.





g. Maneuver the fitting on the intake tube past the vacuum line as show. Ensure the intake tube is fully seated into the big end of the coupler. Soapy water can help with installation.



h. Fully tighten the intake tube bracket to the rubber mount at this time.



i. Using the nut removed in step 2f, secure the heatshield to the inner fender.



j. Install the AEM Dryflow filter using the provided hose clamp. Tighten the clamp to 30 in-lb.



k. Connect the PCV line to the fitting on the intake tube. Ensure it clicks into place and is securely attached.



l. Connect the MAF connector to the MAF sensor and secure the harness with the factory ties into the holes on the heatshield. The ties may need to be repositioned for best fit.



STOCK INTAKE INSTALLED



AEM INTAKE INSTALLED

#### 4. Reassemble Vehicle

- a. Position all kit components for best fitment. Ensure that no components contact any unintended part of the vehicle.
- b. Check for proper hood clearance. Re-adjust components if necessary and re-tighten them.
- c. Inspect the engine bay for any loose tools and ensure that all fasteners that were moved or removed are properly tightened.
- d. Reconnect negative battery terminal and start engine. Let the vehicle idle for 3 minutes. Perform a final inspection before driving the vehicle.

#### 5. Service and Maintenance

- a. AEM Induction Systems requires cleaning the intake system's air filter element every 100,000 miles. When used in dusty or off-road environments, our filters will require cleaning more often. We recommend that you visually inspect your filter once every 25,000 miles to determine if the screen is still visible. When the screen is no longer visible some place on the filter element, it is time to clean it. To clean, purchase our Synthetic air filter cleaner, part number 1-1000 and follow the easy instructions.
- b. Use window cleaner to clean your powder coated AEM<sup>®</sup> intake tube.

**NOTE: DO NOT USE aluminum polish on powder coated AEM<sup>®</sup> intake tubes.**

For technical inquiries  
e-mail us at  
[sales@aemintakes.com](mailto:sales@aemintakes.com)  
or  
call us at  
800.992.3000

## **AEM Air Intake System Warranty Policy**

AEM® warrants that its intake systems will last for the life of your vehicle. AEM® will not honor this warranty due to mechanical damage (i.e. improper installation or fitment), damage from misuse, accidents or flying debris. AEM® will not warrant its powder coating if the finish has been cleaned with a hydrocarbon-based solvent. The powder coating should only be cleaned with a mild soap and water solution. Proof of purchase of both the vehicle and AEM® intake system is required for redemption of a warranty claim.

This warranty is limited to the repair or replacement of the AEM® part. In no event shall this warranty exceed the original purchase price of the AEM® part nor shall AEM® be responsible for special, incidental or consequential damages or cost incurred due to the failure of this product. Warranty claims to AEM® must be transportation prepaid and accompanied with dated proof of purchase. This warranty applies only to the original purchaser of product and is nontransferable. Improper use or installation, use for racing, accident, abuse, unauthorized repairs or alterations voids this warranty. AEM® disclaims any liability for consequential damages due to breach of any written or implied warranty on all products manufactured by AEM®. Warranty returns will only be accepted by AEM® when accompanied by a valid Return Merchandise Authorization (RMA) number. Credit for defective products will be issued pending inspection. Product must be received by AEM® within 30 days of the date RMA is issued.

If you have a warranty issue, please call (800) 992-3000 and our customer service department will assist you. A proof of purchase is required for all AEM® warranty claims.

**NOT LEGAL FOR SALE OR USE ON ANY POLLUTION  
CONTROLLED MOTOR VEHICLE IN CALIFORNIA OR  
STATES ADOPTING CALIFORNIA EMISSION PROCEDURES.**

**See [aemintakes.com](http://aemintakes.com) for CARB status on each part for a specific vehicle**

10-105E

2/14/24