



Equipped with AEM® Dryflow™ Filter
No Oil Required!

INSTALLATION INSTRUCTIONS

PART NUMBER

21-831C (GUN METAL GRAY FINISH)

2017

SUBARU

FORESTER

2.5L

Not legal for sale or use on any pollution controlled motor vehicle in California or states adopting California emission procedures. See AEMIntakes.com for CARB status on each part for a specific vehicle.

ITEM NO.	PART NUMBER	DESCRIPTION	QTY.
1	21-2027DK	Element; 2 3/4" flange 5 1/2" B, 4 3/4 L	1
2	2-1592-1C	INTAKE TUBE; 2.75" OD X 49", 4" BR; 21-808	1
3	20-8606	HEAT SHIELD, SUBARU FORESTER 2017 2.5L, TB/PC	1
4	08185	Hose; 2-3/4" ID X 2-1/2" L Hump Reinforced	1
5	5-5008	Hose; 1/2" ID x 8" L	1
6	8-117	Connector , Plastic 1/2" Blk	1
7	1228599	Mount; Rubber 1" x 6mm	1
8	22224	Bolt; M6-1.00x12 Hex; Flg, Grade 10.9	1
9	444.460.04	Nut; M6 Hex Serrated	1
10	08160	Washer; 1" D x 1/4" Hole Fender	1
11	9444	HOSE CLAMP; 2.31-3.25"	2
12	9448	1/2" BNDHOSE CLAMP, 2.56" - 3.50"	1
13	1-2105	BOLT; SOCKET M4-.7 X 8MM	2
14	102466	Edge Trim; 1/16" Gap 12"	1
15	102496	EDGE TRIM; 3/4" BULB, TOP LOC, 39"L	1



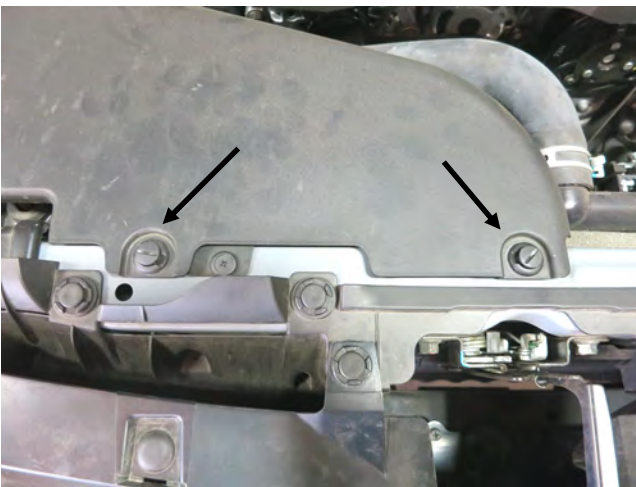
Read and understand these instructions **BEFORE** attempting to install this product. Failure to follow installation instructions and not using the provided hardware may damage the intake tube, throttle body and engine. If you need any assistance please call 1-800-858-3333 to speak with a representative in our Customer Service Center before returning the product.

1. Preparing Vehicle

- a. Make sure vehicle is parked on level surface.
- b. Set the parking brake.
- c. If engine has run in the past two hours, let it cool down.
- d. Disconnect negative battery terminal.
- e. Do not discard stock components after removal of the factory system.
- f. Open the air intake kit package and make sure all parts are included.

Tools Needed:	Optional:
Screwdriver	Small Torque Wrench
10mm Socket	
Socket Driver	
Side Cutters	
4mm Hex Key	

2. Removal of stock system



a. Remove the factory air scoop by removing the two push-in plastic fasteners.



b. Remove the push-in plastic fastener securing the intake resonator to the intake manifold.



c. Disconnect the PCV hose from the intake resonator by releasing the pressure on the spring clamp.



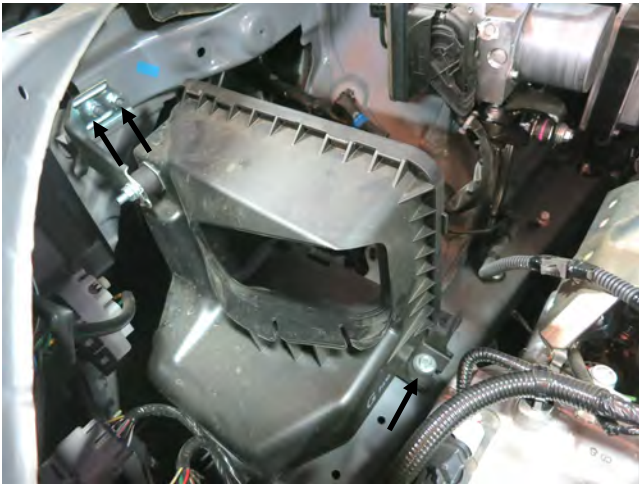
d. Disconnect the Mass Air Flow (MAF) sensor harness from the MAF sensor and the air box.



e. Loosen the hose clamp securing the factory intake to the throttle body.



f. Unlatch the air box lid and remove the air box lid and intake resonator assembly out of the engine bay.



g. Remove the two nuts and the bolt securing the air box base in the engine bay. The nuts will be reused in step 3g.



h. Lift the air box up and out of the engine bay. Tuck the MAF sensor harness towards the engine so it is out of the way.



i. Remove the MAF sensor from the air box lid assembly. Replace the screws into the air box lid for safe keeping. **Do not discard any of your stock equipment.**

3. Installation of AEM® intake system.

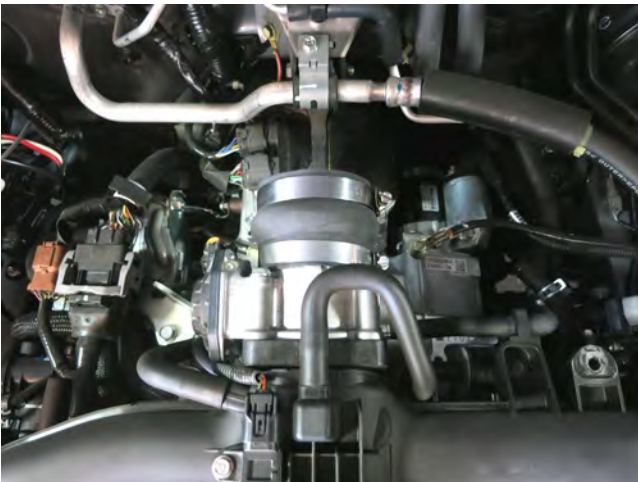
- a. When installing the intake system, do not completely tighten the hose clamps or mounting hardware until instructed to do so.



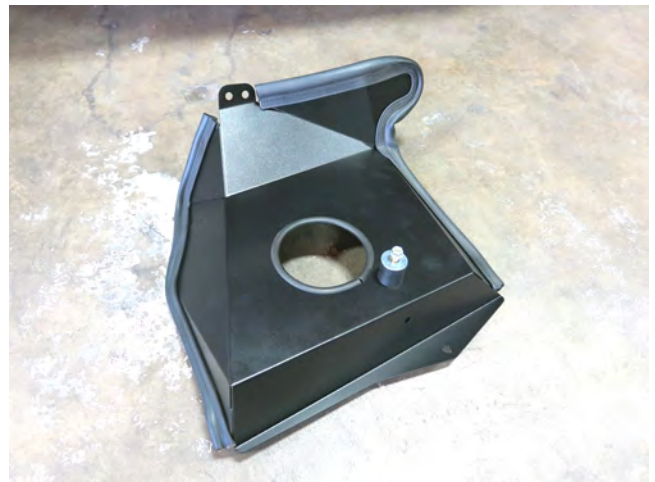
a. Install the MAF sensor into the AEM intake tube using the provided hardware.



b. Attach the provided hose and hose fitting to the intake tube nipple.



c. Install the provided coupler on to the throttle body using the provided hose clamps. Tighten the throttle-body-side hose clamp at this time.



d. Install the edge trim onto the heat shield as shown. Install the rubber mount using the provided hardware. Leave the top nut and washer loose to aid in installation of the intake tube.



e. Install the intake tube as shown, sliding the bracket below the washer on the rubber mount. Do not fully tighten the nut to allow some movement during installation.



f. Install the AEM DryFlow filter using the provided hose clamp onto the intake tube.



g. Carefully lower the assembly into the engine bay. It will take some maneuvering to seat the heatshield assembly into place. Fasten using the provided bolt and the nuts removed in step 2g.



h. Insert the intake tube into the coupler. Position the tube for best fit and tighten the hose clamp.



i. Connect the factory PCV hose to the supplied hose and secure using the factory spring clamp.



j. Connect the MAF sensor harness to the MAF sensor and secure the harness on the heatshield. Tighten the nut on the bracket to secure the tube.



STOCK INTAKE INSTALLED



AEM INTAKE INSTALLED

4. Reassemble Vehicle

- a. Position all kit components for best fitment. Ensure that no components contact any unintended part of the vehicle.
- b. Check for proper hood clearance. Re-adjust components if necessary and re-tighten them.
- c. Inspect the engine bay for any loose tools and ensure that all fasteners that were moved or removed are properly tightened.
- d. Reconnect negative battery terminal and start engine. Let the vehicle idle for 3 minutes. Perform a final inspection before driving the vehicle.

5. Service and Maintenance

- a. AEM Induction Systems requires cleaning the intake system's air filter element every 100,000 miles. When used in dusty or off-road environments, our filters will require cleaning more often. We recommend that you visually inspect your filter once every 25,000 miles to determine if the screen is still visible. When the screen is no longer visible some place on the filter element, it is time to clean it. To clean, purchase our Synthetic air filter cleaner, part number 1-1000 and follow the easy instructions.
- b. Use window cleaner to clean your powder coated AEM® intake tube.

NOTE: DO NOT USE aluminum polish on powder coated AEM® intake tubes.

For technical inquiries
e-mail us at
sales@aemintakes.com
or
call us at
800.992.3000

AEM Air Intake System Warranty Policy

AEM® warrants that its intake systems will last for the life of your vehicle. AEM® will not honor this warranty due to mechanical damage (i.e. improper installation or fitment), damage from misuse, accidents or flying debris. AEM® will not warrant its powder coating if the finish has been cleaned with a hydrocarbon-based solvent. The powder coating should only be cleaned with a mild soap and water solution. Proof of purchase of both the vehicle and AEM® intake system is required for redemption of a warranty claim.

This warranty is limited to the repair or replacement of the AEM® part. In no event shall this warranty exceed the original purchase price of the AEM® part nor shall AEM® be responsible for special, incidental or consequential damages or cost incurred due to the failure of this product. Warranty claims to AEM® must be transportation prepaid and accompanied with dated proof of purchase. This warranty applies only to the original purchaser of product and is nontransferable. Improper use or installation, use for racing, accident, abuse, unauthorized repairs or alterations voids this warranty. AEM® disclaims any liability for consequential damages due to breach of any written or implied warranty on all products manufactured by AEM®. Warranty returns will only be accepted by AEM® when accompanied by a valid Return Merchandise Authorization (RMA) number. Credit for defective products will be issued pending inspection. Product must be received by AEM® within 30 days of the date RMA is issued.

If you have a warranty issue, please call (800) 992-3000 and our customer service department will assist you. A proof of purchase is required for all AEM® warranty claims.

Not legal for sale or use on any pollution controlled motor vehicle in California or states adopting California emission procedures. See AEMIntakes.com for CARB status on each part for a specific vehicle.