

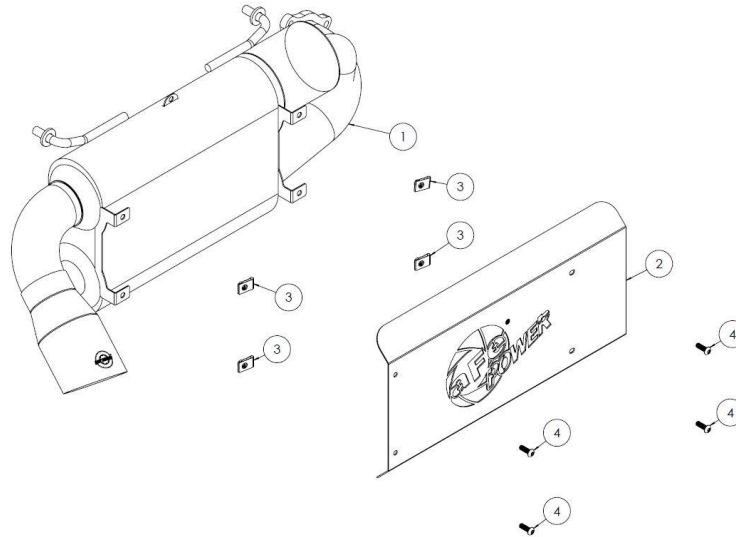


INSTALLATION INSTRUCTIONS

Exhaust System

MAKE: Polaris
MODEL: RZR XP TURBO
YEAR: 2016-2020
ENGINE: 925cc

49-84002-B
49-84002-H



<i>Item</i>	<i>Description</i>	<i>Part Number</i>	<i>Quantity</i>
1	Muffler Assembly	05-144861B	1
2	Heat Shield	05-46367	1
	Heat Shield (Black)	05-46367B	1
3	Clip Nut	03-50389	4
4	Screws	03-50115	4

aFe POWER recommends professional installation on this product. Thoroughly inspect the aFe POWER exhaust system to make sure there is no damage from shipping (if damage is noted, immediately contact aFe POWER customer service). Allow time for your vehicle to cool down prior to installation. When working on your vehicle proceed with caution. Wear protective safety equipment; eye goggles and gloves to ensure a safe installation.

Install band clamps to proper torque specifications of 40-45 ft-lb.





INSTALLATION INSTRUCTIONS

MAKE: Polaris
MODEL: RZR XP TURBO
YEAR: 2016-2020
ENGINE: 925cc

Exhaust System

49-84002-B
49-84002-H

1. **(Read instructions prior to installation.)** It is recommended to not fully tighten the exhaust until it has been fully installed. Leave loose for adjustability.
2. Remove The (x4) screws on the OE muffler heat shield and remove the heat shield.
3. Remove the (x4) right and left OE heat shield brackets, these will not be reused.
4. Remove the (x2) muffler retaining springs, set aside as these will be reused later.
5. Remove the (x3) nuts on the exhaust flange and set aside these will be reused later, remove the OE muffler.
6. Install the aFe power, dirt runner muffler onto the OE exhaust hangers and reinstall the (x3) nuts on the exhaust flange.
7. Reinstall the (x2) muffler retaining springs onto the aFe power, dirt runner muffler.
8. Install the (x4) supplied clip nuts onto the aFe power, dirt runner muffler.
9. Install the supplied heat shield onto aFe power, dirt runner muffler using the (x4) supplied screws and tighten.
10. Remove the OE spark arrestor from the OE exhaust and reinstall it in the aFe power, dirt runner muffler using the original hardware.
11. Tighten all nuts and bolts.
12. It is recommended to re-tighten all clamps and hardware after 50-100 miles.