

**advanced FLOW engineering**

**Instruction Manual** P/N: 51-12732 & 54-12732

---

Make: **Chevrolet** Model: **Corvette (C6)** Year: **2008-2013** Engine: **V8-6.2L**

Make: **Chevrolet** Model: **Corvette Z06 (C6)** Year: **2006-2013** Engine: **V8-7.0L**

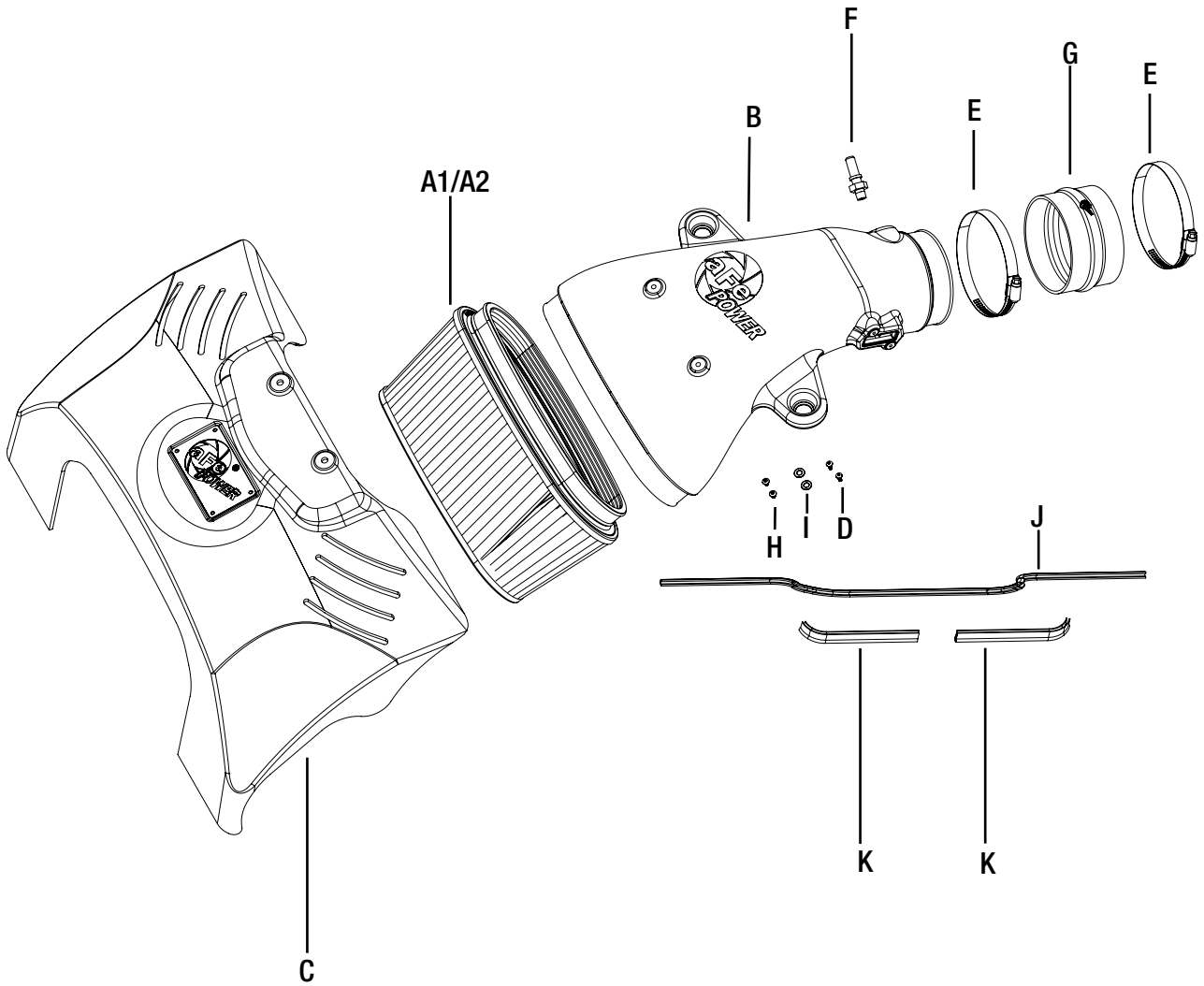


- Please read the entire instruction manual before proceeding.
- Ensure all components listed are present.
- If you are missing any of the components, call customer support at 951-493-7100.
- Ensure you have all necessary tools before proceeding.
- Do not attempt to work on your vehicle when the engine is hot.
- Disconnect the negative battery terminal before proceeding.
- Retain factory parts for future use.

Label	Qty.	Description	Part Number
A1	1	Air Filter (Pro DRY S)	21-90087
A2	1	Air Filter (Pro 5R)	24-90087
B	1	Tube	05-12732B1
C	1	Cover	05-12732B2
D	2	Screw, Torx: M4 x .7 x 8mm	03-50491
E	2	Clamp, T-Bolt (3/-3/4-4-1/16)	03-50262
F	1	Vent Fitting	05-01338
G	1	Coupling, Silicone Hump	05-01332
H	2	Screw, M6x1x12	03-50102
I	2	Washer, Flat	03-50070
J	1	Seal, Trim: Small (26")	05-00149
K	2	Seal, Trim; 7/16" (5")	05-00072

Tools needed: 7mm, 8mm, 10mm and 7/16 Socket or nut driver, Ratchet and extension, flat head screw driver & razor blade, torx T20 driver.

Note: Legal in California for use on race vehicles only. The use of this device on vehicles used on public streets or highways is strictly prohibited in California and others states that have adopted California emission regulations.



**Figure A****Refer to Figure A for Steps 1-2**

Step 1: Disconnect MAF sensor harness & vacuum line ①.

Step 2: Loosen clamps with 8mm (5/16") socket ②.

**Figure B****Refer to Figure B for Step 3**

Step 3: Lift up the airbox carefully to detach from the 3 OE grommets. Take OE air box out of vehicle.

REMOVAL



Figure C

Figure D

**Refer to Figure C for Step 4 & Figure D for Step 5**

Step 4: Remove the MAF sensor from the OE tube, and install the MAF sensor on the aFe tube using the supplied M4 T20 torx screws.

Step 5: Install supplied NPT Fitting into aFe tube.



Figure E

**Refer to Figure E for Step 6**

Step 6: Install Air Filter on the aFe tube with supplied clamp, and tighten with 8mm (5/16") socket.



Figure G



Figure F

INSTALL

**Refer to Figure F & Figure G for Steps 7-8**

Step 7: Transfer two OE mounting grommets from OE tube onto the aFe tube.

Step 8: Install the supplied coupling with two clamps onto the vehicle's throttle body.

Do not tighten clamps yet.



**Figure H****Refer to Figure H for Step 9**

Step 9: Place the 7/16" seal trim along the short edges of the intake cover (3). Place the 1/16" seal trim along the longer edge, facing the engine, of the intake cover (4).

**Figure I****Refer to Figure I for Steps 10-13**

Step 10: Install the aFe tube into the vehicle.

Step 11: Align the tube correctly by pushing grommets firmly onto mounting locations.

You may need to open the T-bolt clamps by removing the nut completely.

Then place the clamp around the coupling and tighten it by re-installing the nut. Tighten all clamps.

Step 12: Reconnect the MAF sensor.

Step 13: Connect the vent hose onto the aluminum fitting.

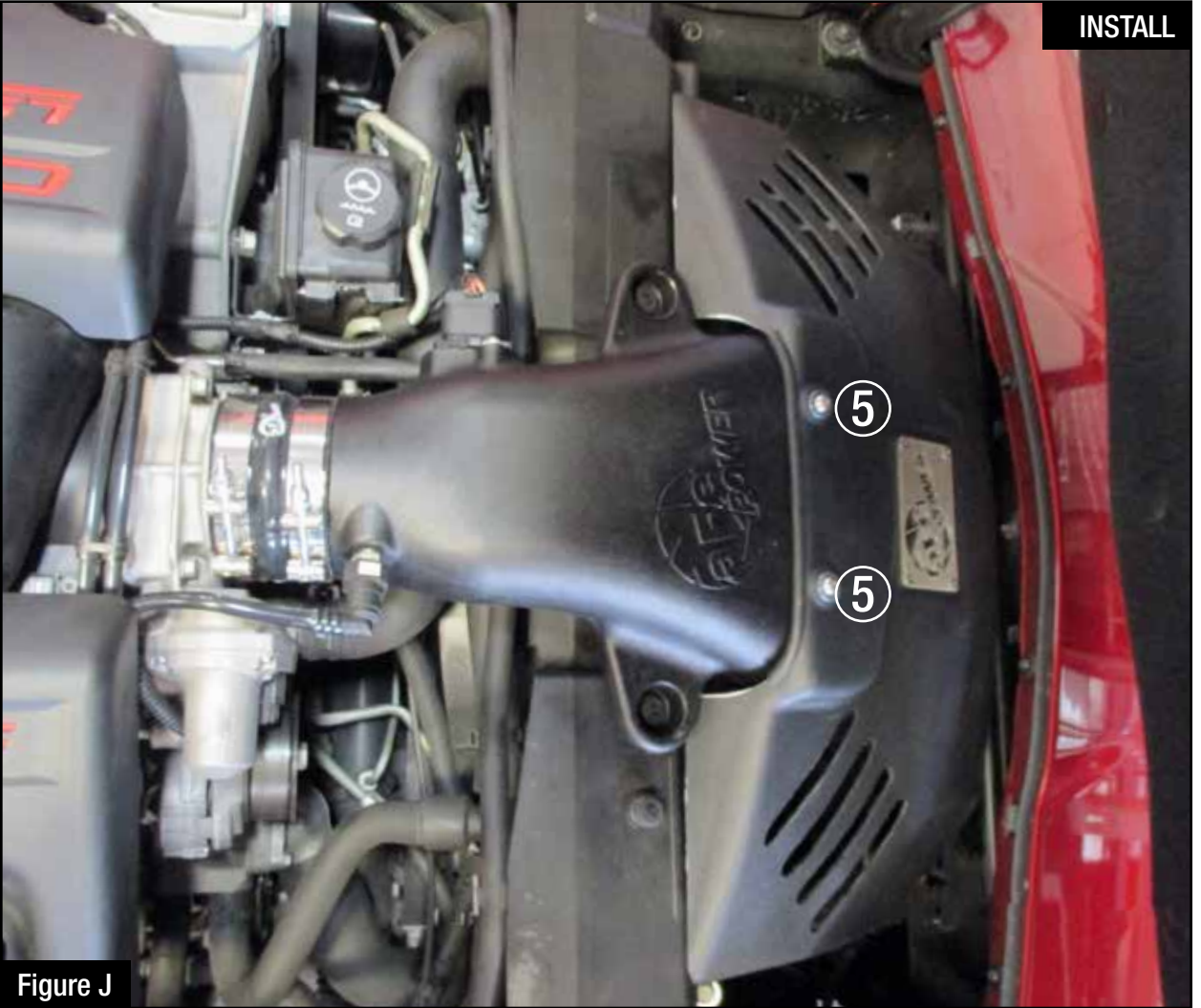


Figure J

**Refer to Figure J for Steps 14-15**

Step 14: With the aFe intake tube installed, install the aFe cover over the intake using the supplied M6 screws and washers (5).

Step 15: Make sure all clamps and connections are secure. Your installation is now complete. Thank you for choosing aFe Power!

**NOTE:** Verify all connections are secure 100-200 miles after installation.



**advanced FLOW engineering, inc.**  
252 Granite Street Corona, CA 92879  
TEL: 951.493.7155 • TECH: 951.493.7100  
E-Mail: [Tech@aFepower.com](mailto:Tech@aFepower.com)