

**advanced FLOW engineering**

**Instruction Manual** P/N: 51-12812 / 54-12812

Make: **Volkswagen** Model: **GTI (Euro)** Year: **2009-2014** Engine: **L4-2.0L (t)**



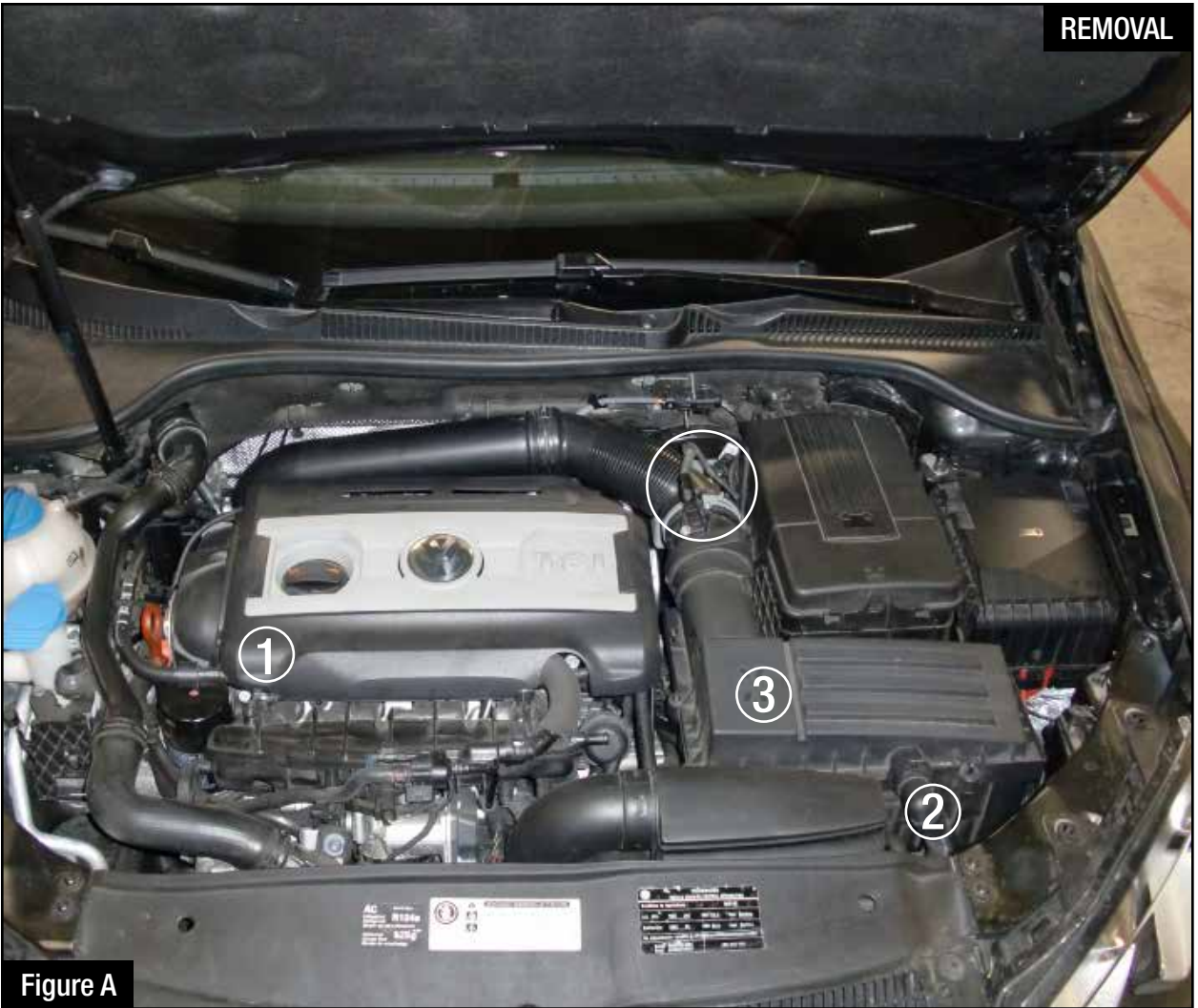
- Please read the entire instruction manual before proceeding.
- Ensure all components listed are present.
- If you are missing any of the components, call customer support at 951-493-7100.
- Ensure you have all necessary tools before proceeding.
- Do not attempt to work on your vehicle when the engine is hot.
- Disconnect the negative battery terminal before proceeding.
- Retain factory parts for future use.

Label	Qty.	Description	Part Number
A1	1	Pro Dry S Air Filter	21-90067
A2	1	Pro 5R Air Filter	24-90067
B	1	Housing	05-11892B2
C	1	Intake Tube	05-12812B1
D	1	Adaptor	05-01037
E	1	Coupling, Elbow	05-00395
F	1	Coupling, Silicone Reducer	05-60047
G	2	Clamp #52	03-50008
H	1	Clamp #48	03-50007
I	1	Clamp #44	03-50019
J	1	Crank Case Fitting	05-01109
K	1	Smog Pump Fitting	05-01096
L	1	Rubber Grommet	03-50146
M	2	Screw, M4	03-50491
N	3	Button Head Screw	03-50102
O	1	Hex Head Screw	03-50052
P	1	Flat Washer	03-50043
Q	1	T20 Torx Bit	03-50066
R	1	Cap 1"	03-50179

Installation will require the following tools:

4mm Hex Key, Needle-Nose Pliers, 7/16" Socket, 5/16" Socket or Nut Driver, T25 Torx Bit, 5 Star Security Torx Bit (If available), Ratchet, Extension, Phillips & Flat-Head Screw Driver



**Figure A****Refer to Figure A for Steps 1-2**

Step 1: Remove the engine cover (1). Disconnect the wiring harness from the MAF sensor.

Step 2: Loosen the screws securing the upper airbox to the lower airbox. Note: the screws are captive and will not separate from the upper airbox. Remove the two screws securing the MAF sensor housing to the upper airbox. Disconnect the breather pipe from the upper airbox (2). Remove the upper airbox from the vehicle (3).



Figure B

**Refer to Figure B for step 3**

Step 3: Remove the air inlet duct cover from the vehicle (1). Remove the lower airbox mounting bolt. Remove the lower airbox from the vehicle. Note: the lower airbox is retained by two grommets and some upward force is required to remove the lower airbox. Remove the remaining portion of the air inlet duct from the vehicle. Remove the MAF sensor from the air intake tube (2).

**Figure C****Refer to Figure C for Step 4**

Step 4: Remove the air intake tube mounting bolt (1).

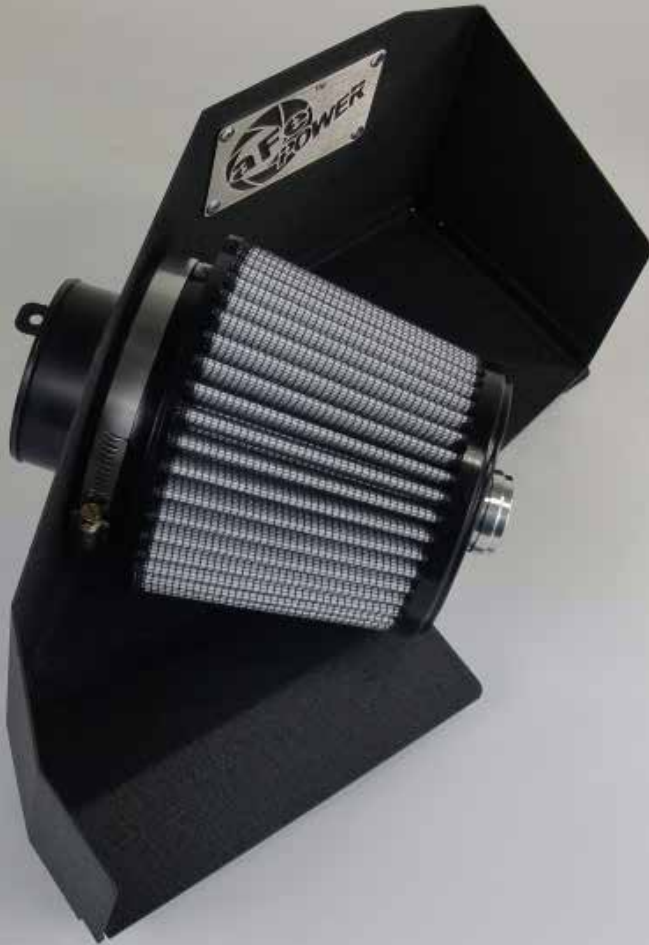
Loosen the clamp securing the air intake tube to the turbo. Disconnect the breather pipe from the air intake tube and remove the air intake tube from the vehicle (2). Note: Air intake tube has been removed for clarity.



Figure D

**Refer to Figure D for step 5**

Step 5: Install the high temperature coupling and supplied clamps on the turbo. Loosely install the air intake tube mounting bolt in the factory location. Install the aFe air intake tube and connect it to the turbo. Connect the breather pipe to the aluminum adaptor fitting.

**Figure E****Refer to Figure E for Step 6**

Step 6: Install the air filter adaptor to the aFe air filter housing using the supplied button head screws and tighten. Install the aluminum adaptor fitting in the top of the aFe air filter, if your vehicle is equipped with a smog pump breather. If it does not come with a smog pump breather, install the provided cap into the top of the air filter hole. Install the aFe air filter on the air filter adaptor and tighten the clamp.





### **Refer to Figure F for Step 7**

Step 7: Remove the electrical enclosure mounting bolt and the headlight housing screw. Note: these fasteners will be used to mount the aFe air filter housing. Install the aFe air filter housing and secure with the bolt and screw removed in the previous step. Secure the housing with the supplied washer and hex head screw. Connect the breather pipe to the adaptor fitting on the top of the air filter.

**Figure G****Refer to Figure G for Step 8**

Step 8: Connect the air filter adaptor to the aFe air intake tube using the supplied elbow coupler. Align the air intake tube prior to tightening the clamps and mounting bolt. Install the MAF sensor in the aFe air intake tube using the supplied screws.

COMPLETED  
INSTALL



Figure H

**Refer to Figure H for Step 9**

Step 9: Check that all components are tight and secure. Your installation is now complete.

*NOTE: Retighten all connections after approximately 100-200 miles.*



Page intentionally left blank

Page intentionally left blank



Pro DRY S Air Filter



P/N: 21-90067

Pro 5R Air Filter



P/N: 24-90067

Blue Squeeze Restore Kit



P/N: 90-50501

Pro DRY S Restore Kit



P/N: 90-59999

Blue Aerosol Restore Kit



P/N: 90-50001

aFe T-Shirts



P/N: 40-30382 (M)  
40-30383 (L)  
40-30384 (XL)  
40-30384 (2XL)

aFe LED Flashlight



P/N: 40-10131 (Small)  
40-10150 (Large)

To purchase any of the items above, view airflow charts, dyno graphs, photos, and video; please go to [aFepower.com](http://aFepower.com).

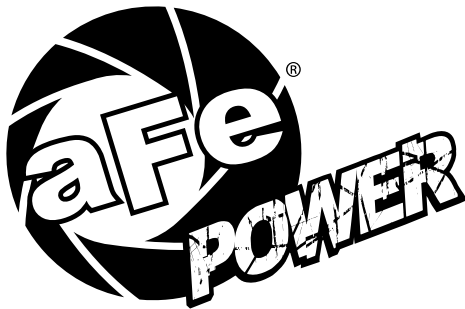
# Warranty

## General Terms:

- aFe warrants their products to be free from manufacturer's defects due to workmanship and material.
- This warranty applies only to the original purchaser of the product and is non-transferrable.
- Proof of purchase of the aFe product is required for all warranty claims.
- Warranty is valid provided aFe instructions for installation and/or cleaning were properly followed.
- Proper maintenance with regular inspections of product is required to insure warranty coverage.
- Damage due to improper installation, abuse, unauthorized repair or alteration is not warranted.
- Incidental or consequential damages or cost, including installation and removal of part, incurred due to failure of aFe product is not covered under this warranty.
- All warranty is limited to the repair and/or replacement of the aFe part. To request Return Goods Authorization ("RGA"), email [RGA@afepower.com](mailto:RGA@afepower.com) or call (951)493-7100. Upon receipt of the RGA, you must return the product to the address provided in the RGA, freight prepaid and accompanied with a dated proof of purchase and the RGA. Upon receipt of the defective product and upon verification of proof of purchase, aFe will either repair or replace the defective product within a reasonable time, not to exceed thirty days.

<b>Product Category</b>	<b>P/N Prefix</b>	<b>Warranty duration</b>
Direct OE Replacement Filters	10, 11, 30, 31, 71, 73	Life of the vehicle
Racing Filters	18	1 year
Universal	21, 24, 72	2 years
Air Intake Systems	50, 51, 54, 55, 75	2 years
Exhaust Systems	49	2 years
Intercoolers & Intercooler Tubes	46-2	2 years
Intake Manifolds	46-1	2 years
Differential Cover	46-7	Life of the vehicle
Exhaust Manifolds	46	2 years
Throttle Body Spacers	46-3	2 years
Fluid Filters	44	90 days
Pre-Filters	28	2 years
Heavy Duty OE Replacement	70	2 years
PowerSports OE Replacement	81, 87	2 years
PowerSports Intake Systems	85	2 years

No other warranty expressed or implied applies nor is any person or advanced FLOW engineering authorized to assume any other warranty. Some States do not allow the exclusion or limitation of incidental or consequential damages or do not allow limitations on how long an implied warranty lasts, so the above limitations or exclusions may not apply to you. This warranty gives you specific legal rights, and you may also have other rights which vary from State to State.



**advanced FLOW engineering, inc.**  
252 Granite Street Corona, CA 92879  
TEL: 951.493.7100 • TECH: 951.493.7100 x23  
E-Mail: [Tech@aFepower.com](mailto:Tech@aFepower.com)