

advanced FLOW engineering

Cold Air Intake System

Instruction Manual P/N: 56-70024D / 56-70024R

Make: Hyundai
Make: Hyundai

Model: Elantra
Model: Veloster

Year: 2016-2019
Year: 2019-2021

Engine: L4-2.0L
Engine: L4-2.0L



- Please read the entire instruction manual before proceeding.
- Ensure all components listed are present.
- If you are missing any of the components, call customer support at 951-493-7185.
- Ensure you have all necessary tools before proceeding.
- Do not attempt to work on your vehicle when the engine is hot.
- Retain factory parts for future use.

| Label | Qty. | Description | Part Number |
|-------|------|------------------------------------|--------------|
| A1 | 1 | Air Filter (Pro 5R) | 24-91108 |
| A2 | 1 | Air Filter (Pro DRY S) | 21-91108 |
| B | 1 | Tube | 05-5670024B1 |
| C | 1 | Housing | 05-5670005B2 |
| D | 1 | Plug, Air Box | 05-01527 |
| E | 1 | Coupling, Silicone Bellows Reducer | 05-01528 |
| F | 1 | Clamp, #044 | 03-50019 |
| G | 1 | Clamp, #048 | 03-50007 |
| H | 1 | Fitting, Aluminum 11mm | 03-50615 |
| I | 2 | Retainer Clips | 05-50616 |

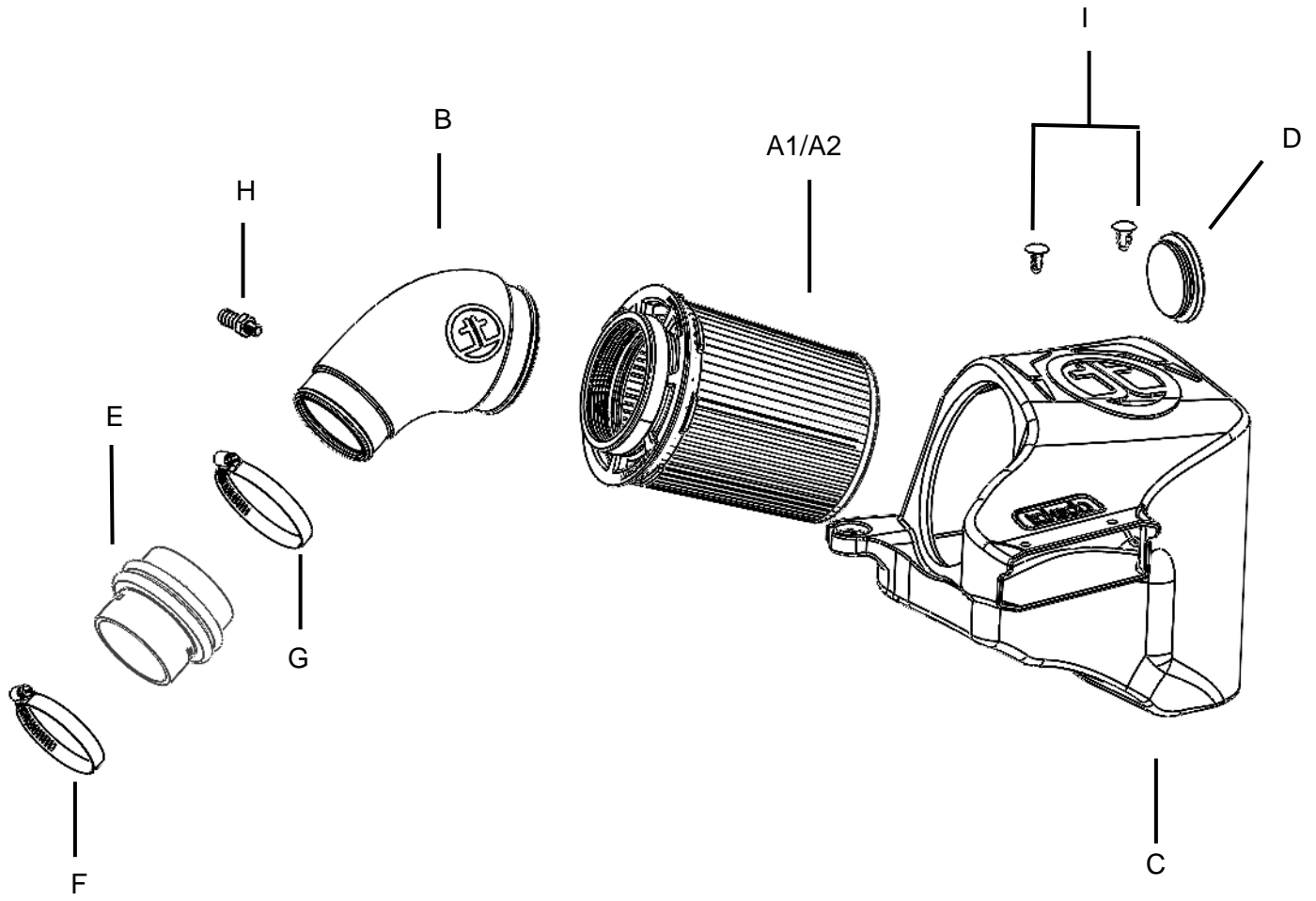
Installation will require the following tools:

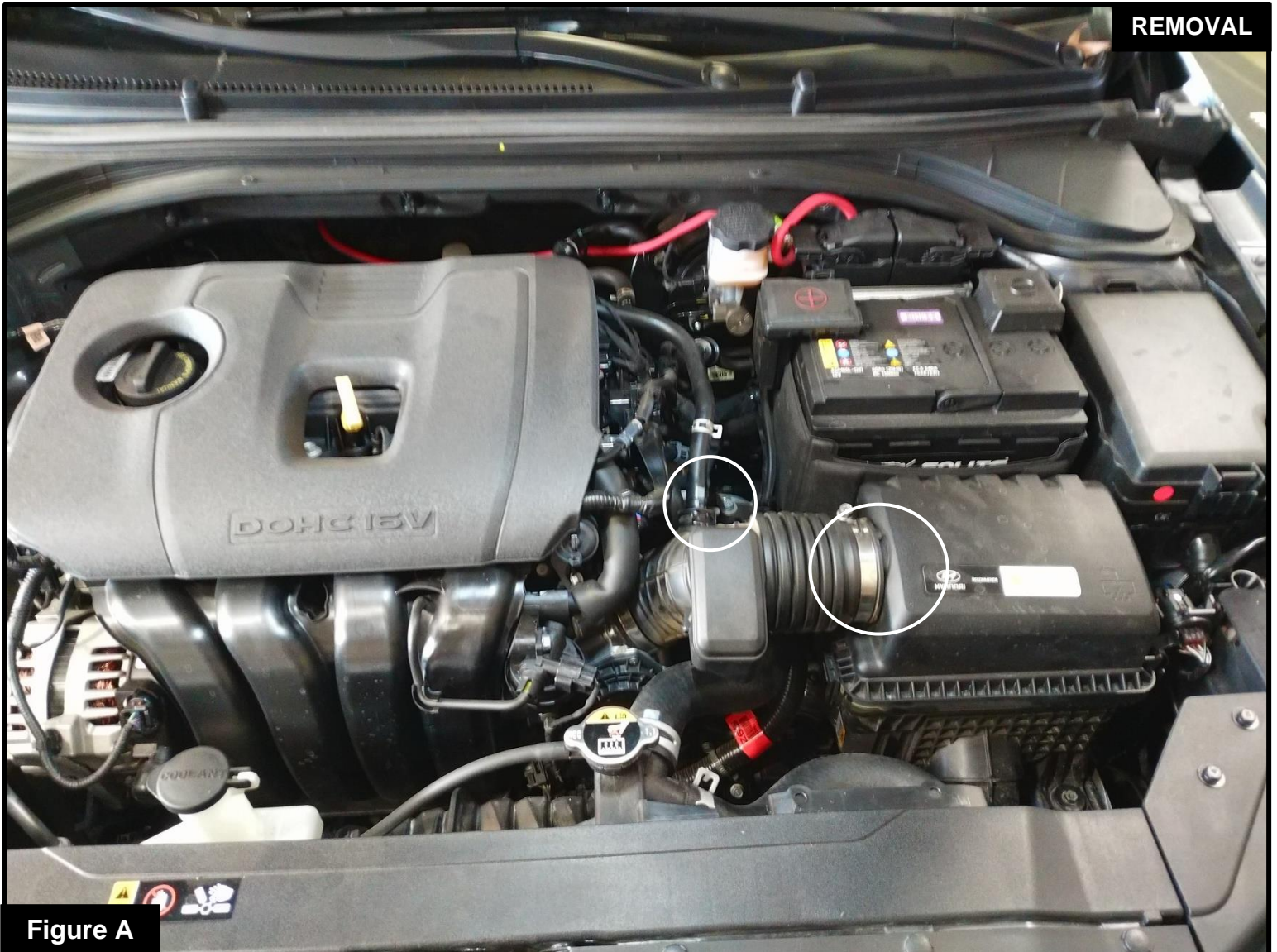
8mm and 10mm socket, extension, ratchet, 16mm wrench, pliers and flat-head screwdriver.

A safe way to lift the front of the vehicle may be necessary.

Warranty Information available at: <https://afepower.com/contact#warranty>

Emissions Disclaimer: This product is not currently CARB exempt and is not available for purchase in California or for use on any vehicle registered with the California Department of Motor Vehicles.



**Figure A****Refer to Figure A for Steps 1-3**

Step 1: Remove the engine cover by pulling upward on it.

Step 2: Using pliers, open the clamp securing the hose to the air intake tube, and then slide the clamp away from the intake tube. This clamp will be re-used. Disconnect the rubber hose from the air intake tube.

Step 3: Loosen the clamp securing the factory intake tube to the factory air box.

**Figure B****Refer to Figure B for Step 4-5**

Step 4: Using an 8mm socket, loosen the clamp that is over the throttle body

Step 5: Remove the factory intake tube from the vehicle.

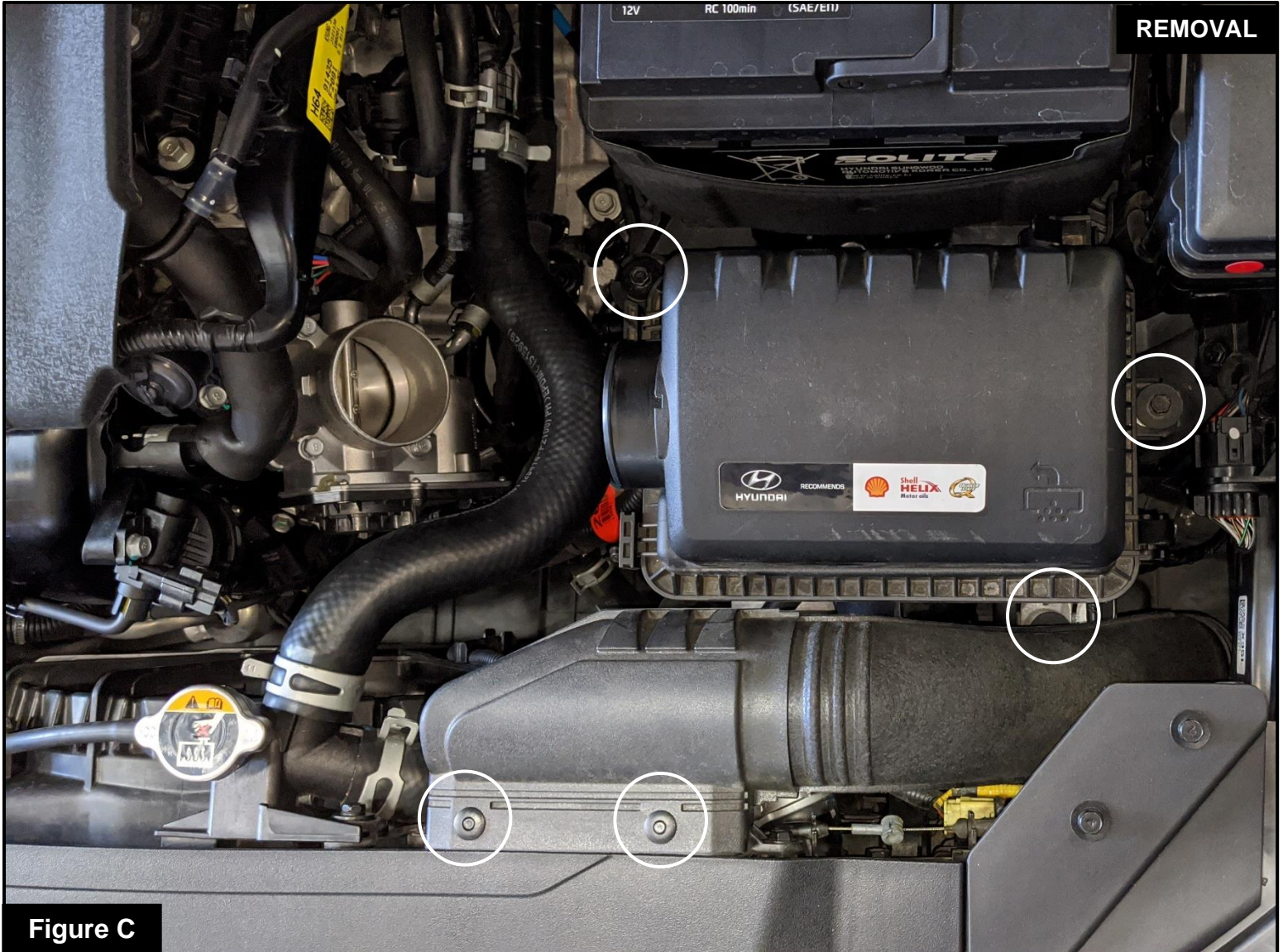


Figure C

Refer to Figure C for Steps 6-7

Step 6: Remove the two plastic rivets connecting the factory air inlet to the front of the car. Use a flat-head screwdriver to press down on the center of the rivet to unlock, and then pull them out. These plastic rivets will be replaced.

Step 7: With a 10mm socket, extension and ratchet, loosen the three bolts securing the factory housing to the vehicle. These three bolts will be re-used during the installation of the Takeda air intake system.



Figure D

Refer to Figure D for Step 8

Step 8: Remove the splash shield under the vehicle. There are twelve clips (circles) and seven 10mm screws (squares).

**Figure E****Refer to Figure E for Steps 9-10**

Step 9: Remove the lower portion of the factory air intake system. There are three 10mm screws holding it in place. Remove from underneath the vehicle.

Step 10: Reinstall splash shield.

**Figure F**

Refer to Figure F for Step 11

Step 11: Transfer the three mounting grommets and sleeves from the bottom of the factory housing to the Takeda housing.

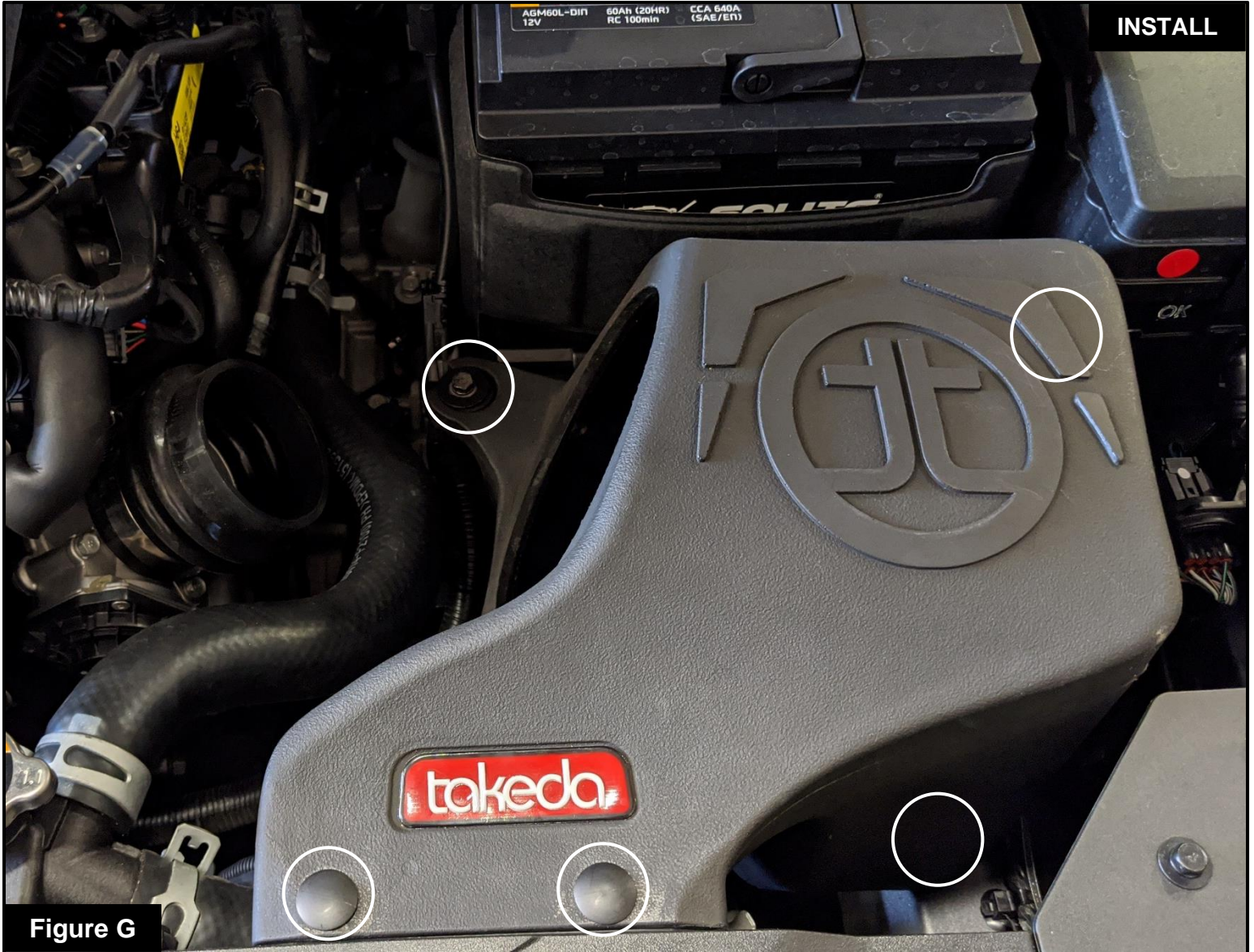


Figure G

Refer to Figure G for Steps 12-14

Step 12: Install the Takeda housing into the vehicle. Secure it with the three bolts removed at Step 8. One of the bolts will be installed inside the housing.

Step 13: Secure the housing to the air inlet with the two provided Christmas tree plastic rivets.

Step 14: Install the bellows coupling onto the throttle body. The smaller end of the coupler goes over the throttle body. Install the provided clamps over the throttle body, but do not tighten yet.



Figure H

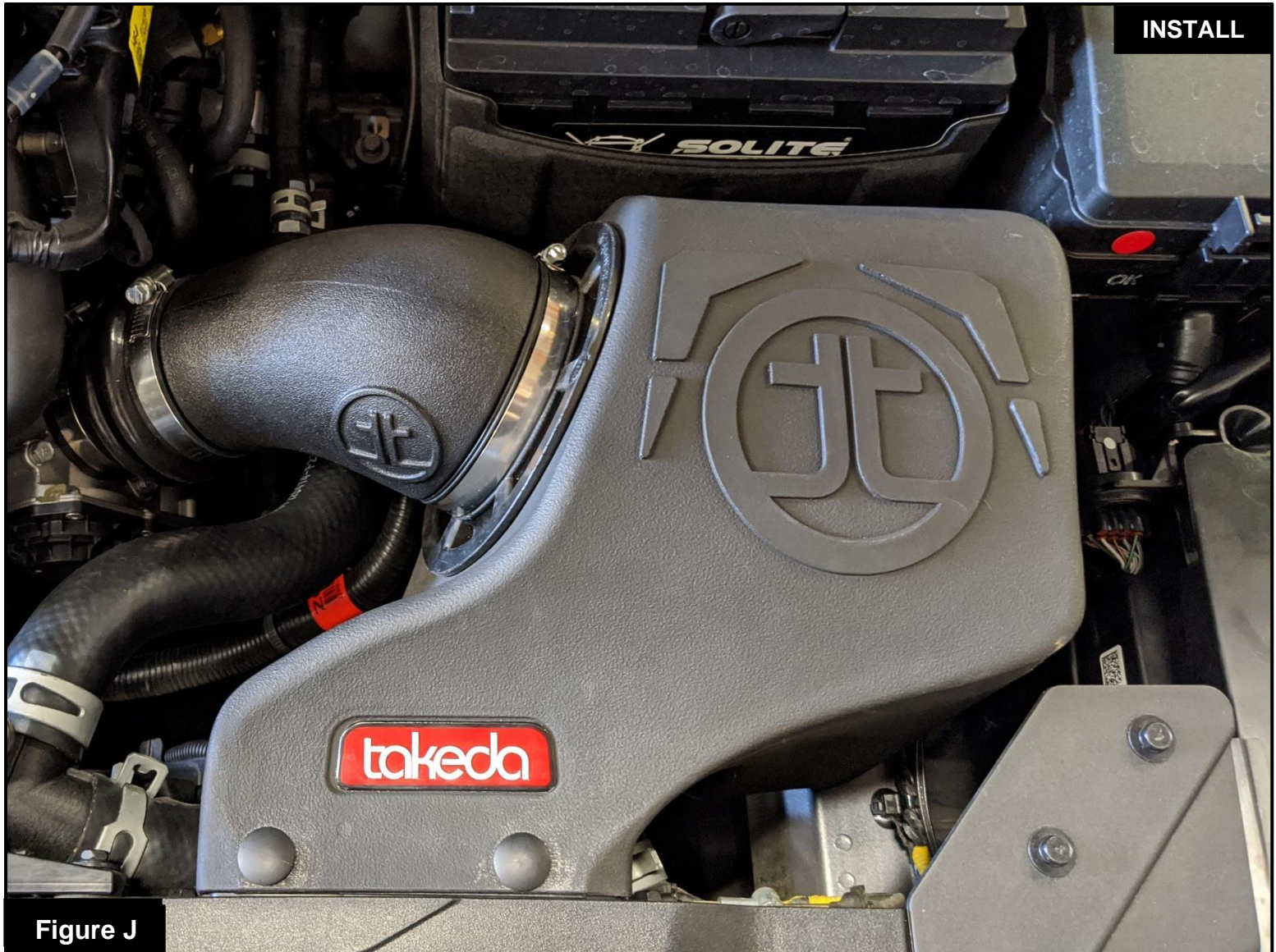
Refer to Figure H for Step 15

Step 15: Install the air filter into the housing by firmly pushing it into the housing until the filter tabs lock it into place. Install on the clamp on the filter, but do not tighten at this time.

**Figure I****Refer to Figure I for Step 16**

Step 16: Using a 16mm wrench, install the aluminum fitting into the Takeda air intake tube.

Note: These are NPT fittings, the small gap between the 16mm hex and the tube is normal.



Refer to Figure J for Steps 17-18

Step 17: Install the Takeda intake tube by sliding it into the coupling then into the air filter.

Step 18: Align the tube, filter, and coupling, then tighten all clamps.

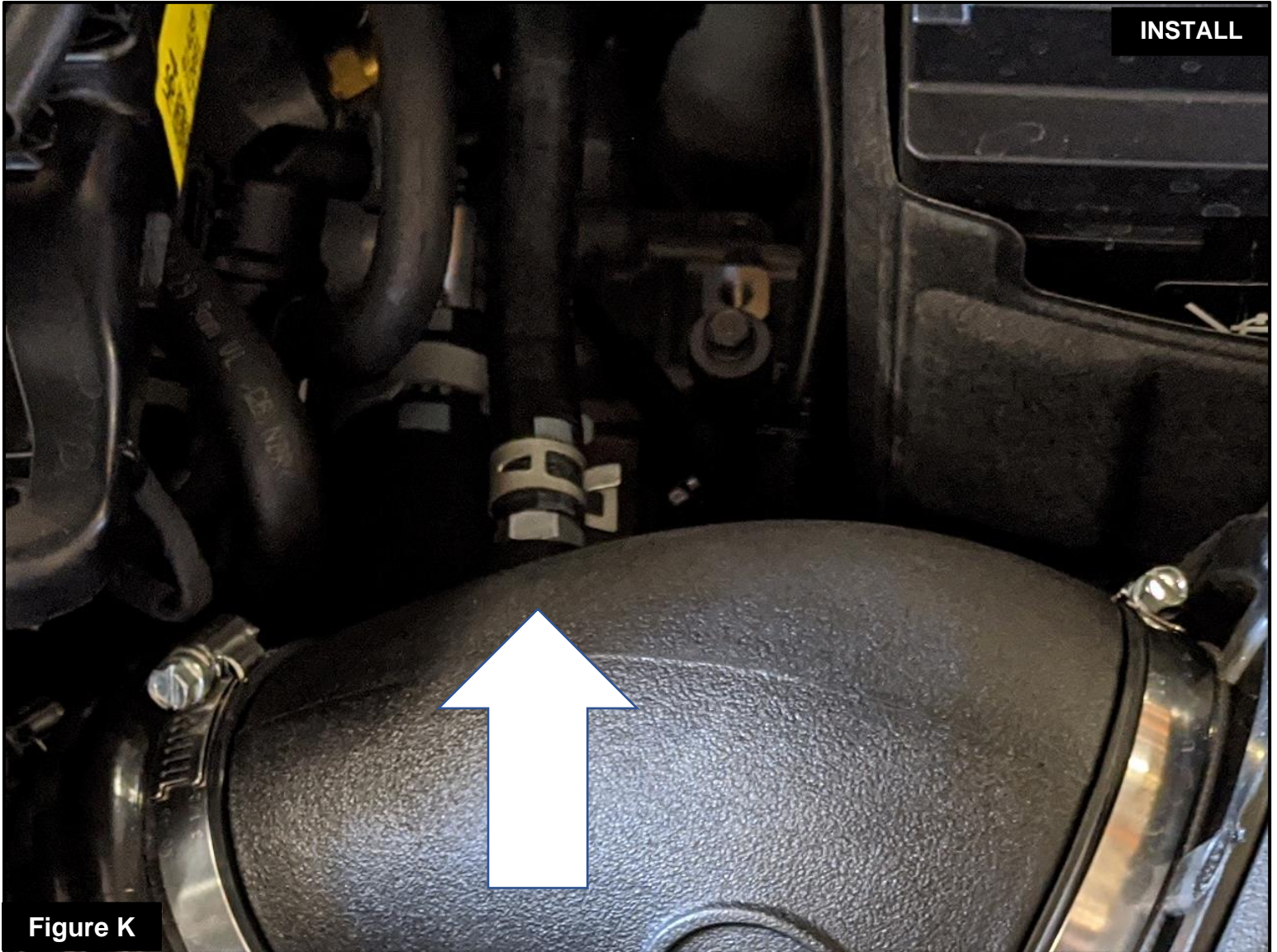


Figure K

Refer to Figure K for Step 19

Step 19: Connect the small rubber hose to the aluminum fitting on the tube. Secure them with the factory pry clamps.

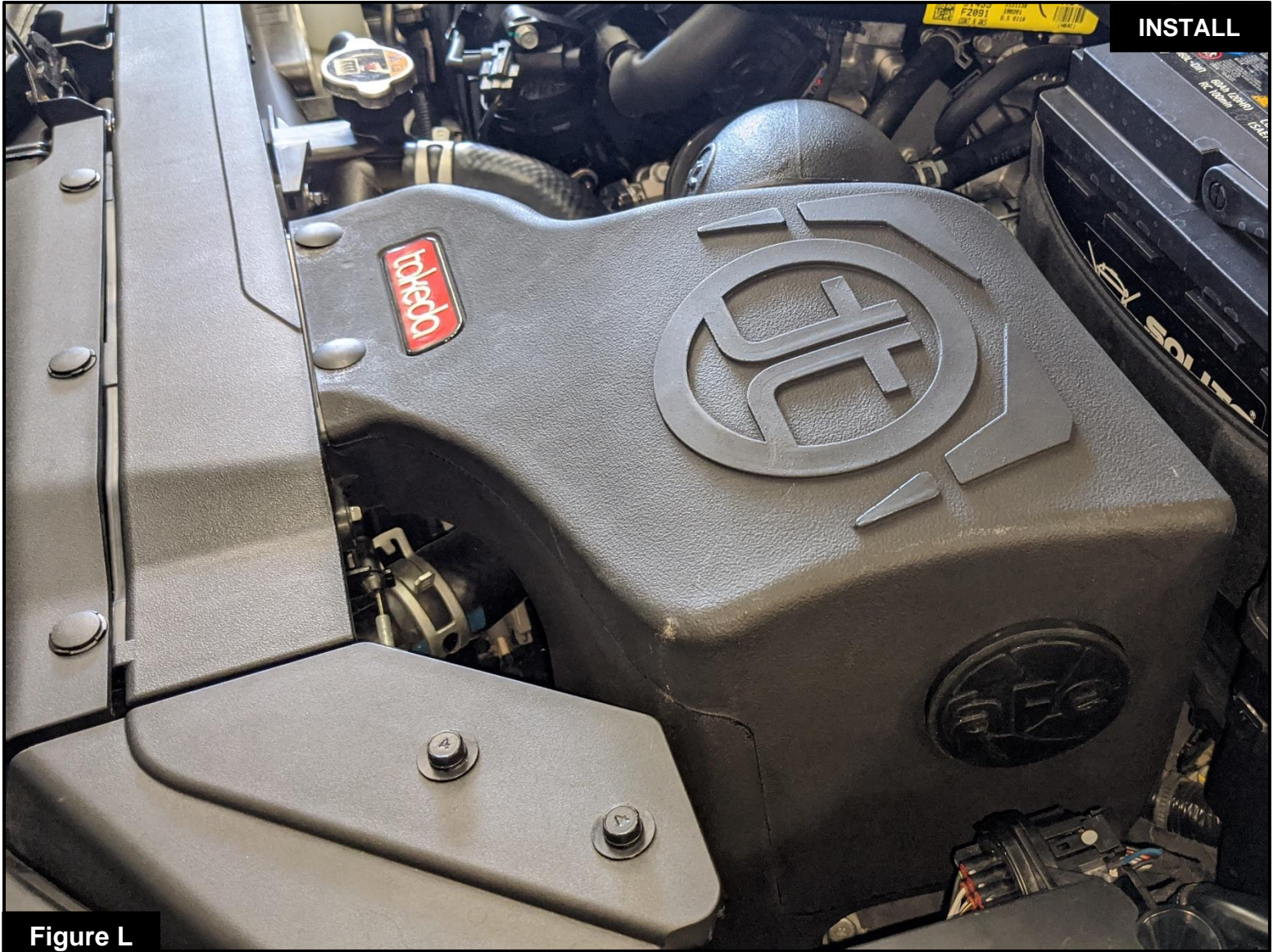


Figure L

Refer to Figure L for Step 20

Step 20: The kit includes an optional plug to close off the side auxiliary air inlet. Install the plug if you wish to close off the side auxiliary air inlet and only capture cold air from the front.

- Without the plug installed, the Takeda intake will capture the maximum air available. More airflow offers more power. Yet some of this air is picked up from inside the engine compartment and could be warmer air. Warmer air will affect the performance of the vehicle.
- The plug installed on the housing will block off any hot engine air entering the housing and make sure the coolest air available is directed into the engine. It will also reduce the noise of the intake.



Figure M

Refer to Figure M for Steps 21-22

Step 21: Reinstall Engine Cover.

Step 22: Make sure all clamps and connections are secured. Your installation is now complete. Thank you for choosing Takeda USA!

NOTE: Check all screws, clamps, and connectors are secure after 100-200 miles.



Page left blank intentionally



Page left blank intentionally



Page left blank intentionally



advanced FLOW engineering, inc.

Corona, CA 92879

<https://afepower.com/contact>