



Installation Instructions

For Part Numbers :

200-108 700-430 Airaid Oiled Media Filter
 201-108 701-430 SynthaMax Dry Media Filter - Red
 202-108 702-430 SynthaMax Dry Media Filter - Black
 203-108 703-430 SynthaMax Dry Media Filter - Blue

1996-05 Chevrolet S-10 Blazer/GMC Jimmy
 1996-04 Chevrolet S-10/GMC Sonoma
 1997-00 Isuzu Hombre
 1991-01 Oldsmobile Bravada
 4.3L V6

Component Identification

1.	Airaid Premium Filter	1
2.	Airaid Intake Tube	1
3.	Stainless Coupler	1
4.	Airaid Decal	1

Full color instructions can be viewed on our web site at Airaid.com. Use the **Product Search** function to find your part number, and click **View Details**.

1) DISCONNECT NEGATIVE (-) BATTERY CABLE.

2) Remove the Factory Air Filter Housing.

- Unscrew the air cleaner housing lid from the base.
- Loosen the rubber clamp to the mass air flow meter and remove from vehicle. **See Fig#1**
- Remove the factory air filter from the vehicle. **See Fig#1**
- Remove the air filter housing base by removing the one nut on the corner of the housing. Then lift the housing out from the rear to remove.

3) Install the Airaid Intake Tube.

- Mount the 3.5" stainless steel coupler onto the long end of the Airaid intake Tube.
- Slide the tube with coupler onto the mass airflow meter. (*Note: the coupler is a reducer, the smaller end of the coupler mounts onto the meter.*) Apply the Airaid Bubble Decal onto the Intake Tube as shown.
- Install the Airaid premium air filter to onto the short end of the intake tube and tighten hose clamp.
- Slide the Airaid intake tube with coupler over the mass air meter and align bracket with the factory stud. **See Fig#2**
- Use the original 10mm nut to fasten the Airaid bracket to the factory stud. **See Fig#2**
- Carefully tighten the stainless coupler in alternating steps.

4) Finishing Up

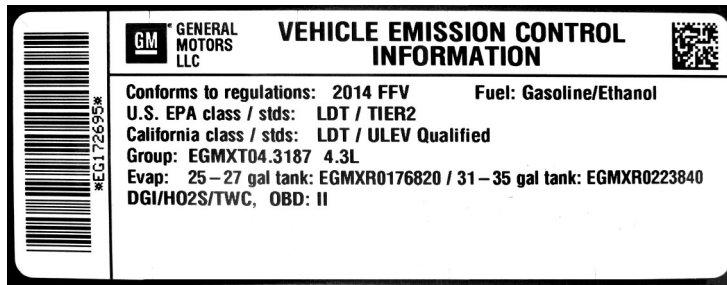
- Check for any foreign objects or debris in the intake path.
- Reconnect the negative battery cable & double check your work.

Fig#1



Fig#2





WARNING! If your vehicle has a Vehicle Emission Control Information decal affixed to the factory airbox, a new replacement label must be obtained and installed in a readily visible position in the engine compartment in order to remain CARB compliant. Failure to do so will prevent the vehicle from passing a smog check. Replacement labels can be ordered from your local dealership. Regulations state that the VECI label shall not be affixed to any equipment which is easily detached from the vehicle. Label placement, under the hood on a painted surface is recommended.

Thank you for purchasing the Airaid Intake System. Contact Airaid @ (800) 498-6951 8:00 AM - 5:00 PM MST weekdays for questions regarding fit or instructions that are not clear to you. Your Airaid Intake System was carefully inspected and packaged. Check that no parts are missing, or were damaged during shipping. If any parts are missing, contact Airaid. The air filter element is protected from direct exposure to water and debris; care should be taken not to drive through deep water. **WATER INGESTION IS THE DRIVERS RESPONSIBILITY!** The air filter is reusable and should be cleaned periodically.

FILTER IDENTIFICATION

700-430 Airaid Oiled Media
702-430 Airaid SynthaMax Dry Media - Black

701-430 Airaid SynthaMax Dry Media - Red
703-430 Airaid SynthaMax Dry Media - Blue

**For your Oiled media filter
we suggest using the AIRAID
Filter Tune-Up Kit!**



P/N 790-551 Aerosol Spray
P/N 790-550 Squeeze Spray



Do Not Oil

Synthamax Air Filters do not require oil. Service air filter as needed by cleaning with common non-petroleum all-purpose household cleaner and water. Simple Green®, Formula 409® or equivalent works great. Apply cleaner to outside of air filter and allow to soak. Then flush filter clean from the inside out with a garden hose and repeat steps if necessary. Do not apply high pressure water or air to clean filter. Allow filter to air dry and reinstall.

