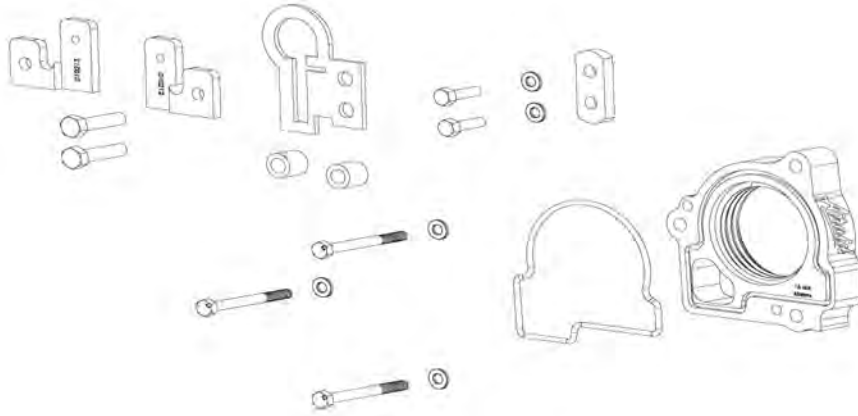




310-509 INSTALLATION INSTRUCTIONS 03-07 Jeep Grand Cherokee 4.7L

Thank you for purchasing the Airaid Throttle Body Spacer. Please read the instruction manual carefully before proceeding with the installation. Your Airaid Throttle Body Spacer was carefully inspected and packaged. Check that no parts are missing, or were damaged during shipping. If you need any assistance please call 1-800-858-3333 to speak with a representative in our Customer Service Center before returning the product.

Thank you for selecting AIRAID.



**THROTTLE BODY SPACERS FOR VEHICLES LISTED ARE
50 STATE LEGAL. SEE AIRAID.COM FOR CARB STATUS ON
EACH PART FOR A SPECIFIC VEHICLE.**

Also available for your 99-04 Jeep Grand Cherokee– the Airaid Intake System P/N 310-127.

Parts List

| | | |
|--------------|--------------------------------|-----|
| AIR-KIT509PA | Aluminum Plate | (1) |
| AIR-KIT509H | Hardware | |
| | "O"-Ring #241 | (1) |
| | Hex Bolts 6mm x 60mm | (3) |
| | Flat Washers 6mm | (5) |
| | Air Box Extension Plates | (2) |
| | Hex Bolts 6mm x 20mm | (2) |
| | Throttle Cable Bracket | (1) |
| | .636 long w/ 3/8" hole Spacers | (2) |
| | 3/8-16 x 1 1/2" bolts | (2) |
| | Nutplate | (1) |

Tools List

1/4 in. Ratchet
 1/4 in. x 12 in. Extension
 8mm Socket
 10mm Socket
 14mm Socket
 14mm Box End Wrench
 3/16 Allen Wrench
 5/32 Allen Wrench
 7/8 Box End Wrench

Installation Instructions. Read Me!

1. DISCONNECT NEGATIVE (-) BATTERY CABLE.

2. Remove air intake hose assembly.
3. Remove throttle body air intake box and save bolts.
4. Remove (3) bolts from the throttle body.
5. Unclip throttle & cruise cables and remove from manifold and throttle lever.
6. Install throttle & cruise cable bracket and tighten bolts. (Ref. "B")
7. Install both throttle & cruise cables thru reinforcement ring of throttle cable bracket. Then slide and lock both plastic cable retainers into slot separately.
8. Install spacer using (3) 6mm x 60mm bolts and flat washers. (Ref. "A")
9. Reattach cruise and throttle cables to throttle body lever.
10. Locate (2) air box extension brackets (one right & one left hand) using (2) 6mm x 20mm bolts, (2) 6mm washers, and air intake box using saved bolts. (Ref. "C" and Step 3)
11. Inspect & Test throttle linkage for full Open & Closed travel before driving. Some cruise and kick down cables may require adjustment. Please refer to vehicles service manual for proper adjustment.
12. Reinstall throttle body air intake assembly using Step 2 as an example.
13. Reconnect battery cable. Enjoy!

The sound of power...The "whistle" means its working!



Ref. "B" (1) Throttle Cable Bracket
(2) .636 long w/ 3/8" hole Spacers
(2) 3/8-16 x 1 1/2" Bolts
(1) Nutplate



Ref. "C" (2) Air Box Ext. Plates
(2) 6mmx20mm Hex Bolts
(2) 6mm Flat Washers



Ref. "A" (1) Spacer
(1) "O" Ring #240
(3) 6mm x 60mm Hex Bolts
(4) 6mm Flat Washers



AIR-I31509D
Rev. 09.29.20