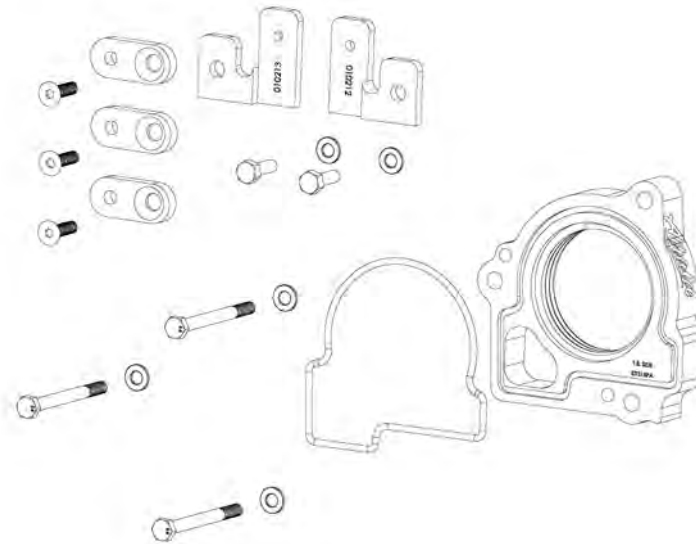




## # 310-515 INSTALLATION INSTRUCTIONS 1999-2002 Jeep Grand Cherokee 4.7L

Thank you for purchasing the Airaid Throttle Body Spacer. Please read the instruction manual carefully before proceeding with the installation. Your Airaid Throttle Body Spacer was carefully inspected and packaged. Check that no parts are missing, or were damaged during shipping. If you need any assistance please call 1-800-858-3333 to speak with a representative in our Customer Service Center before returning the product.

*Thank you for selecting AIRAID.*



**THROTTLE BODY SPACERS FOR VEHICLES LISTED ARE 50 STATE LEGAL. SEE AIRAID.COM FOR CARB STATUS ON EACH PART FOR A SPECIFIC VEHICLE.**

**\* Also available for your Jeep Grand Cherokee– the Airaid Intake System P/N 310-127.**

**Call for details!**

<b>Parts List</b>		<b>Tools List</b>
AIR-KIT515PA	Aluminum Plate (1)	1/4 in. Ratchet
AIR-KIT515H	Hardware (1)	1/4 in. x 12 in. Extension
"O"-Ring	(1)	10mm Socket
Hex Bolts 6mm x 60mm	(3)	14mm Socket
Flat Washers 6mm	(5)	14mm Box End Wrench
Air Box Extension Plates	(2)	3/16 Allen Wrench
Hex Bolts 6mm x 20mm	(2)	5/32 Allen Wrench
Throttle Bracket Extension Plates (Special)	(3)	7/8 Box End Wrench
Flat Head Screws 6mm x 20mm	(3)	

## ***Installation Instructions. Read Me!***

1. **DISCONNECT NEGATIVE (-) BATTERY CABLE.**
2. Remove air intake assembly.
3. Remove throttle body intake box and save bolts.
4. Remove (3) bolts from throttle body.
5. Remove bolts from throttle linkage bracket and save.
6. Install spacer using (3) 6mm x 60mm bolts and flat washers (Ref. "A").
7. Locate (3) extension plates and (3) flat head screws before installing throttle linkage and dipstick bracket. (\* Note: Remove stud from front throttle linkage mount.) Dipstick must be located under forward extension plate at flathead screw location (Ref. "B").
8. Locate (2) extension plates using (2) 6mm bolts & washers to reposition throttle body intake box using saved bolts (Step 2) & (Ref. "C").
9. Inspect & Test throttle linkage for full open and closed travel before driving. Some cruise or kick-down cables may require adjustment. Please refer to service manual.
10. Reinstall throttle body air intake assembly using (Step 1) as an example.
11. Reconnect battery cable. Enjoy!

***The sound of power...The "whistle" means its working!***

**Ref. B-** (3) Extension Plates (Short)  
(3) 6mm Flat Head Screws



**Ref. C-** (2) Air Box Extension Plates  
(2) Bolts 6mm x 20mm  
(2) Flat Washers 6mm

**Ref. A-** (1) Spacer  
(1) "O" Ring #240  
(3) Bolts 6mm x 60mm  
(3) Flat Washers 6mm



AIR-I31515C  
Rev. 09.29.20