

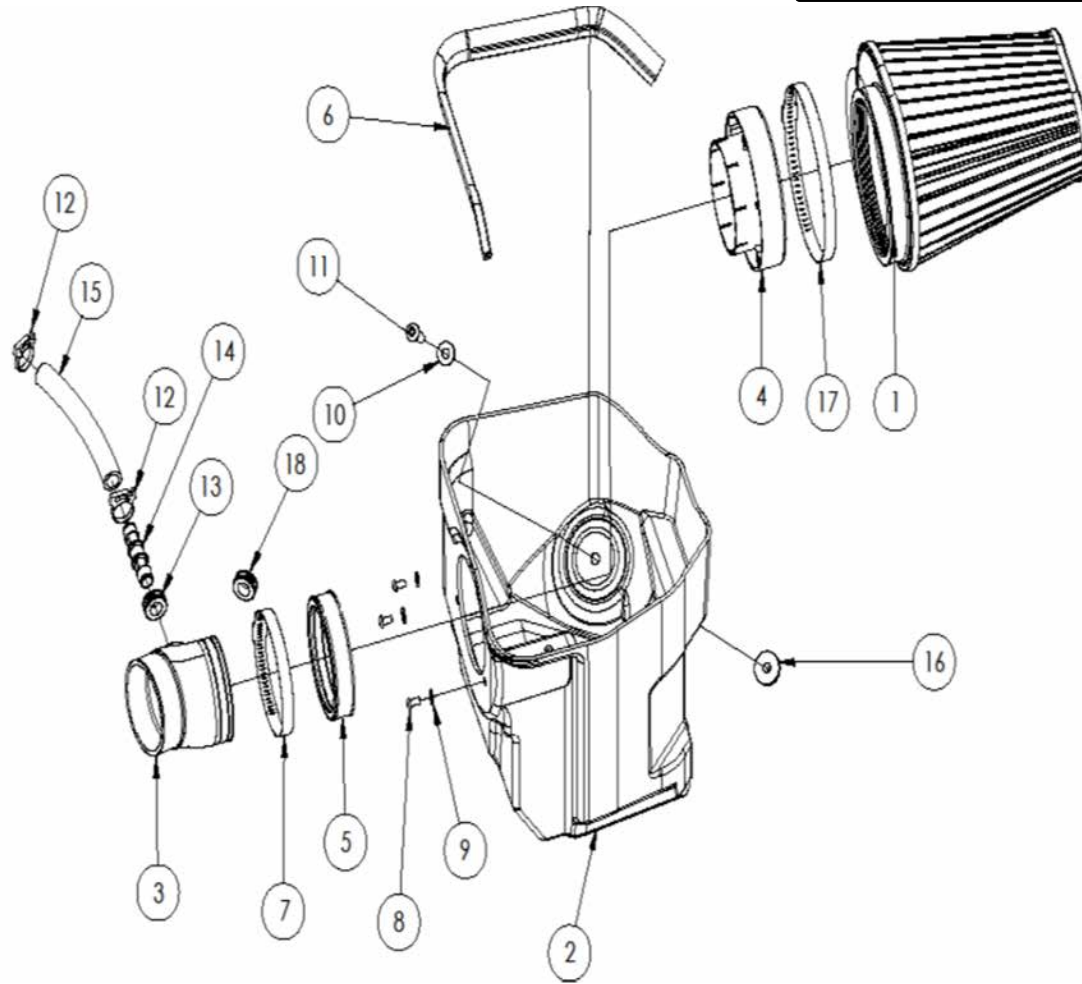
Airaid

INSTALLATION INSTRUCTIONS

354-317 724-127 Airaid Oiled Media Filter
 355-317 725-127 SynthaMax Dry Media Filter
2011-21 Dodge Challenger
2011-21 Dodge Charger
2011-21 Chrysler 300
3.6L-V6

NOT LEGAL FOR SALE OR USE ON ANY POLLUTION CONTROLLED MOTOR VEHICLE IN CALIFORNIA OR STATES ADOPTING CALIFORNIA EMISSION PROCEDURES.

See Airaid.com for CARB status on each part for a specific vehicle



COMPONENT IDENTIFICATION

Description	Qty.	Part #	Description	Qty.	Part #	Description	Qty.	Part #
1. AIR FILTER	1	724/725-127	7. HOSE CLAMP; #72	1	KITHS72	13. GROMMET; 5/8" BLK RUBBER	1	KITGRMT20
2. AIR BOX	1	KIT318CAB	8. SCREW; 1/4-20 X 1/2"	3	KIT15DHC3050	14. CONNECTOR; 5/8 BARB	1	8-140
3. INTAKE TUBE	1	KIT317T	9. WASHER; 1/4"ID X 5/8"OD	3	08275	15. HOSE; 5/8"	1	KITHOSE12
4. ADAPTER; FILTER 4.325" X 6"	1	KITFA01	10. WASHER; 5/16" USS, FLAT	1	KIT31NWUSPZ	16. INSERT; 3/8-16 X 3/4 X 15/16L	1	08163
5. COUPLER; GM	1	KITCOUPLER02	11. SCREW; 3/8-16 X 1.5"	1	KIT15BHC3150	17. HOSE CLAMP; #104	1	KITS104
6. WINDSHIELD WIPER BLADE	1	KITSTRIP14	12. HOSE CLAMP; #19	2	KITSNP19M4	18. GROMMET; PLUG, 7/8"ID HOLE	1	082007

Full color instructions can be viewed on our web site at Airaid.com. If you need any assistance please call 1-800-498-6951 to speak with a representative in our Customer Service Center before returning the product.

TO START:

1. Turn off the ignition and disconnect the negative battery cable.

NOTE: Disconnecting the negative battery cable erases pre-programmed electronic memories. Write down all memory settings before disconnecting the negative battery cable. Some radios will require an anti-theft code to be entered after the battery is reconnected. The anti-theft code is typically supplied with your owner's manual. In the event your vehicles anti-theft code cannot be recovered, contact an authorized dealership to obtain your vehicles anti-theft code.



2. Loosen the hose clamp on the air box outlet and disconnect the intake tube. Separate the crankcase breather from the air box lid.



3. Remove the air box screw in the core support and lift the air box out of the vehicle. Set the screw aside, it will be reused in step 11.



4. Install the Filter Adapter onto the Cool Air Box using the three 1/4" Button Head Screws and 1/4" Flat Washers, (#s 8&9). Apply the Airaid Bubble Decal inside the Airbox as shown.

Continued...



5. Slide the Coupler and Clamp onto the Filter Adapter as shown. Do not tighten the Clamp at this time.



6. Insert the Grommet into the Intake tube. **NOTE: On some models the CCV hose does not connect to the factory air filter housing but connects to the intake tube near the throttle body. On these models install the provided plug into the intake tube in place of the grommet.**



7. Insert the Barbed Fitting into the Grommet and Tube.



8. Install the Intake Tube into the Coupler as shown, with the Barbed Fitting in the Nine O'clock position. Do not tighten the Clamp at this time.



9. When properly installed, the Intake Tube is to be in full contact with the inner edge of the Filter Adapter.



10. Set the Well Nut into the hole in the inner fender.



11. Lower the Air Box assembly down into the inner fender. Align the bolt holes and secure the Air Box using the screw removed in step 3 and the 3/8" Button Head Screw with the 5/16" Flat Washer.



12. When equipped, slide the factory intake tube onto the Airaid Tube, adjust if necessary and tighten the Clamps. Connect the crank case breather line to the Barbed fitting using the supplied PCV Hose.



13. When equipped, secure the PCV Hose on both ends using the two Speed Clamps.



14. Install the Airaid Premium Filter onto the Filter Adapter.



15. Install the Weatherstrip onto the top edge of the Air Box with the contour rolling away from the Filter.

16. Double check your work!

Make sure there is no foreign material in the intake path. Make sure all clamps, hoses, bolts, and screws are tight. Double check the hood clearance! **Reconnect the negative battery cable!**

Thank you for purchasing the Airaid Intake System. Contact Airaid @ (800) 498-6951 8:00 AM - 5:00 PM MST weekdays for questions regarding fit or instructions that are not clear to you. Your Airaid Intake System was carefully inspected and packaged. Check that no parts are missing, or were damaged during shipping. If any parts are missing, contact Airaid. The air filter element is protected from direct exposure to water and debris; care should be taken not to drive through deep water. **WATER INGESTION IS THE DRIVERS RESPONSIBILITY!** The air filter is reusable and should be cleaned periodically.

For your Oiled media filter we offer the Airaid Tune Up Kit!



P/N 790-551 Aerosol Spray
P/N 790-550 Squeeze Spray



NOT LEGAL FOR SALE OR USE ON ANY POLLUTION CONTROLLED MOTOR VEHICLE IN CALIFORNIA OR STATES ADOPTING CALIFORNIA EMISSION PROCEDURES.

See Airaid.com for CARB status on each part for a specific vehicle



Synthamax Air Filters **do not** require oil. Service air filter as needed by cleaning with common non-petroleum all-purpose household cleaner and water. Simple Green®, Formula 409® or equivalent works great. Apply cleaner to outside of air filter and allow to soak. Then flush filter clean from the inside out with a garden hose and repeat steps if necessary. Do not apply high pressure water or air to clean filter. Allow filter to air dry and reinstall.