



Installation Instructions

For Part Numbers:

400-760 850-385 Airaid Oiled Media Filter

401-760 851-385 SynthaMax Dry Media Filter - Red

2018-21 FORD F150

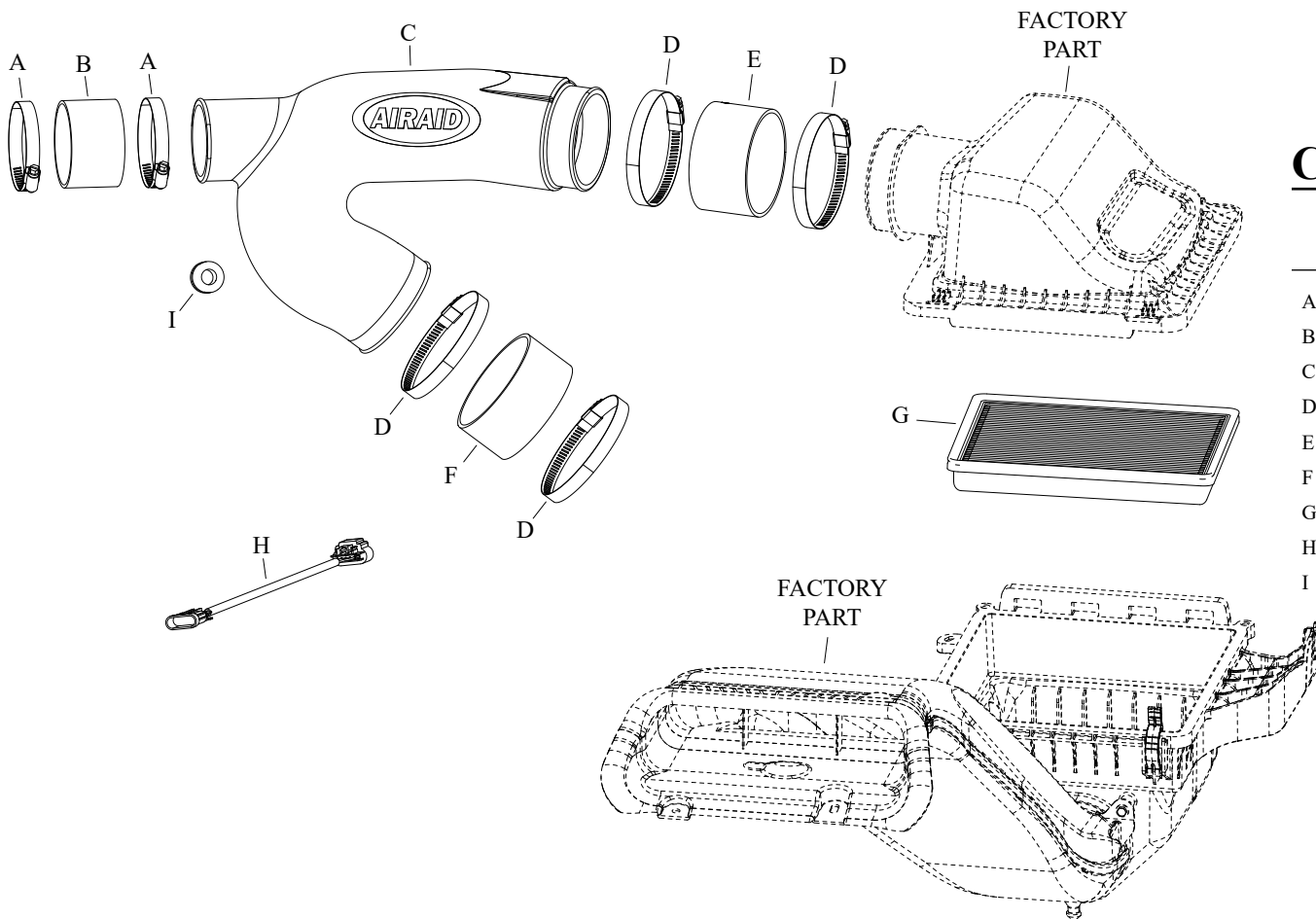
V6-2.7L Ecoboost

NOT LEGAL FOR SALE OR USE ON ANY POLLUTION CONTROLLED MOTOR VEHICLE IN CALIFORNIA OR STATES ADOPTING CALIFORNIA EMISSION PROCEDURES.

See Airaid.com for CARB status on each part for a specific vehicle

TOOLS NEEDED:

flat blade screw driver



Component Identification

Description	Qty.	Part #
A HOSE CLAMP #48	2	08601
B COUPLER; 3"ID X 3"L	1	KITCOUPLER17
C TUBE	1	KIT760
D HOSE CLAMP #64	4	08645
E COUPLER; 3.875"ID X 3"L	1	KITCOUPLER33
F COUPLER; 4"ID X 3"L	1	KITCOUPLER18
G AIR FILTER	1	850/851-385
H EXTENSION HARNESS	1	21783
I GROMMET; 1"OD. 1/2"ID	1	08064

Full color instructions can be viewed on our web site at Airaid.com. If you need any assistance please call 1-800-498-6951 to speak with a representative in our Customer Service Center before returning the product.

TO START:

1. Turn off the ignition and disconnect the negative battery cable.

NOTE: Disconnecting the negative battery cable erases pre-programmed electronic memories. Write down all memory settings before disconnecting the negative battery cable. Some radios will require an anti-theft code to be entered after the battery is reconnected. The anti-theft code is typically supplied with your owner's manual. In the event your vehicles anti-theft code cannot be recovered, contact an authorized dealership to obtain your vehicles anti-theft code.



2. Disconnect the inlet air temperature sensor.



3. Loosen the three hose clamps that secure the factory intake tube and then remove the intake tube from the vehicle.

NOTE: AIRAID recommends that customers do not discard factory air intake.



4. Release the two clips that secure the upper air filter housing and then remove the housing and factory air filter.



5. Install the provided AIRAID® air filter into the lower air filter housing.



6. Install the provided coupler hose onto the turbo inlet tubes and secure with the provided hose clamps.

Continued...



7. Install the provided coupler hose onto the AIRAID® intake tube and secure with the provided hose clamp.



8. Remove the inlet air temperature sensor from the factory intake tube. Remove the O-Ring from the inlet air temperature sensor and then install the sensor into the AIRAID® intake tube using the provided grommet. **NOTE: Use caution while handling the inlet temperature sensor as it is very fragile.**



9. Install the AIRAID® intake tube assembly into the coupler and adjust for best fit, then secure the tube with the provided hose clamps.



10. Install the factory upper air filter housing into the tube on the coupler and onto the lower filter housing. Secure with the factory retaining clips and hose clamp provided.



11. Reconnect the inlet air temperature sensor electrical connection.



12. Double check your work!

Make sure there is no foreign material in the intake path. Make sure all clamps, hoses, bolts, and screws are tight. Double check the hood clearance!

Reconnect the negative battery cable!

Thank you for purchasing the Airaid Intake System. Contact Airaid @ (800) 498-6951 8:00 AM - 5:00 PM MST weekdays for questions regarding fit or instructions that are not clear to you. Your Airaid Intake System was carefully inspected and packaged. Check that no parts are missing, or were damaged during shipping. If any parts are missing, contact Airaid. The air filter element is protected from direct exposure to water and debris; care should be taken not to drive through deep water.

WATER INGESTION IS THE DRIVERS RESPONSIBILITY! The air filter is reusable and should be cleaned periodically.

FILTER IDENTIFICATION

850-385 Airaid Oiled Media

851-385 Airaid SynthaMax Dry Media - Red

For your Oiled media filter we offer the Airaid Tune Up Kit!



P/N 790-551 Aerosol Spray
P/N 790-550 Squeeze Spray



NOT LEGAL FOR SALE OR USE ON ANY POLLUTION CONTROLLED MOTOR VEHICLE IN CALIFORNIA OR STATES ADOPTING CALIFORNIA EMISSION PROCEDURES.

See Airaid.com for CARB status on each part for a specific vehicle

SynthaMax

Synthamax Air Filters **do not** require oil. Service air filter as needed by cleaning with common non-petroleum all-purpose household cleaner and water. Simple Green®, Formula 409® or equivalent works great. Apply cleaner to outside of air filter and allow to soak. Then flush filter clean from the inside out with a garden hose and repeat steps if necessary. Do not apply high pressure water or air to clean filter. Allow filter to air dry and reinstall.