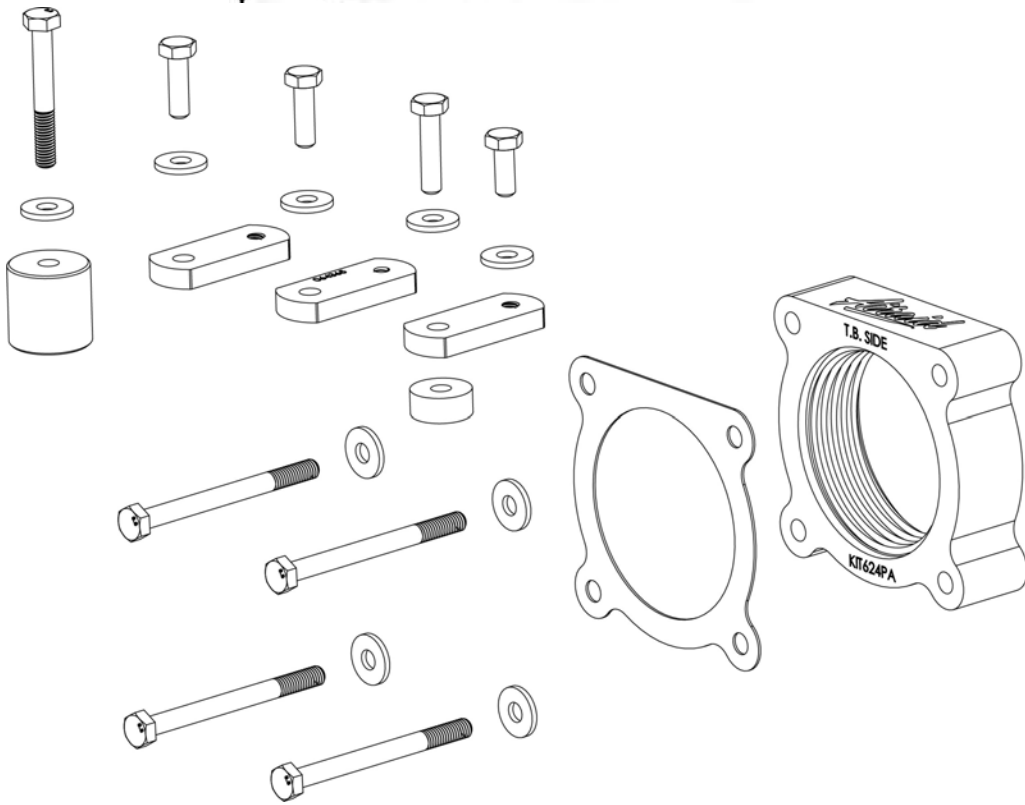




Installation Instructions
Part Number 510-624
2007-09 Toyota FJ Cruiser
2005-15 Toyota Tacoma
2005-09 Toyota 4Runner
4.0L V-6

Packing List:

AIR-KIT624PA	Aluminum Plate	(1)
AIR-KIT624G	Fiber Gasket	(1)
AIR-KIT624H	Hardware	
	6mmx75mm Bolt	(4)
	6mm Flat Washer	(9)
	6mmx20mm Bolt	(2)
	6mmx25mm Bolt	(1)
	6mmx40mm Bolt	(1)
	6mmx12mm Bolt	(1)
	1" Extension Plate (No C'Snk)	(3)
	5/16" Thick Spacer 1/4" Hole	(1)
	3/4" Thick Spacer 1/4" Hole	(1)



Tools Required For Installation:

- 4mm, 10mm Sockets
- Ratchet and Extension
- Pliers
- Flat Blade Screwdriver

INTAKE SYSTEMS FOR VEHICLES LISTED ARE 50 STATE LEGAL. SEE AIRAID.COM FOR CARB STATUS ON EACH PART FOR A SPECIFIC VEHICLE.

Thank you for purchasing the Airaid Throttle Body Spacer. Please read the instruction manual carefully before proceeding with the installation. Your Airaid Throttle Body Spacer was carefully inspected and packaged. Check that no parts are missing, or were damaged during shipping. If you need any assistance please call 1-800-858-3333 to speak with a representative in our Customer Service Center before returning the product.

Thank you for selecting AIRAID.



1. Disconnect the negative battery cable.
 Using a 10mm socket, remove the two nuts that secure the factory beauty cover to the engine. Remove the beauty cover and save it for reinstallation later.



2. A.) Using a 4mm socket, remove the two studs that secure the beauty cover to the engine.
B.) Squeeze the tab on the Mass Air Flow sensor wiring connector and disconnect it from the Mass Air Flow sensor.
C.) Using a 10mm socket, remove two bolts that secure the resonator/airbox to the engine.



3. A.) Using a 10mm socket, loosen two hose clamps, one at the throttlebody, and one where the fresh air tube connects to the resonator/airbox.
B.) Disconnect the crankcase breather hose on the front of the resonator/airbox, and the small vacuum line on the back. (*not shown*)
C.) Using a flat blade screwdriver, pry two wiring harness anchors from the resonator/airbox.



4. Remove the complete resonator/airbox assembly from the vehicle.



5. Using a 10mm socket, remove the 4 bolts that hold the throttle body to the intake manifold.



6. Slide the Airaid Spacer (#1) and gasket (#2) between the intake manifold and the throttle body. Make sure the "Flow" arrow on the spacer is pointing towards the intake manifold, and the gasket is next to the throttle body. Install the 4 supplied 6mm x 75mm bolts (#3) and flat washers (#4) thru the throttle body, gasket, spacer, into the intake manifold and tighten evenly to the vehicle manufacturer's specifications.



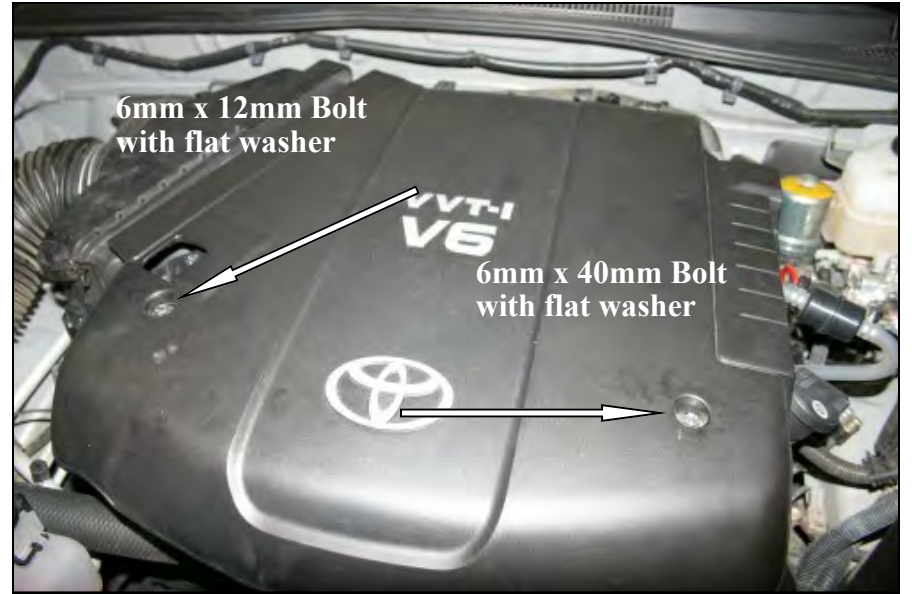
7. Install one 1" extension plate (#9) using a 6mm x 20mm bolt (#5) and flat washer (#4) on the valve cover with the long end of the spacer facing the right fender. Repeat this procedure on the top of the intake manifold at the location shown above.



8. Reinstall the resonator/airbox assembly in the reverse order that you removed it using the factory bolts. Make sure to reconnect all breather and vacuum hoses, and the Mass Air sensor electrical connector. Install one 1" extension plate (#9) using the 5/16" thick round spacer (#10) and 6mm x 25mm bolt (#6), with flat washer (#4) in the threaded hole where the stud was removed on the resonator/airbox, with the extension plate facing the throttle body as shown.



9. Install the 3/4" long round spacer (#11) on top of the threaded hole where the stud was removed on the intake manifold as shown and proceed to the next step.



10. Gently reinstall the beauty cover on the engine and use one 6mm x 12mm bolt (#8) with flat washer (#4) on the passenger side, and one 6mm x 40mm bolt (#7) with flat washer (#4) on the driver's side.

11. Double check your work!

Make sure there is no foreign material in the intake path. Make sure all clamps, hoses, bolts, and screws are tight.

Reconnect the negative battery cable!

The sound of power...The "whistle" means its working!

Contact your nearest Airaid dealer for an Airaid Intake System for your car, truck or SUV.

AIR-151624D
Rev.06.16.20