

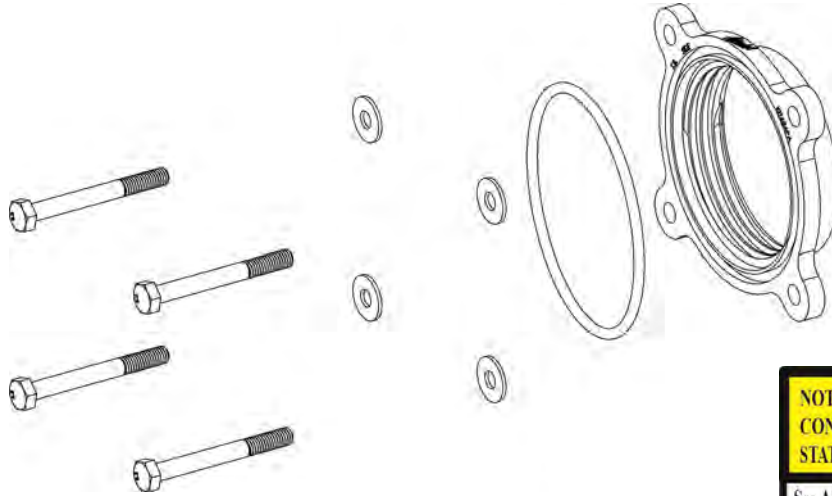


Installation Instructions Part Number 510-654

2016-2017 Toyota Tacoma
3.5L V6

Parts List

AIR-KIT654PA	Aluminum Plate	(1)
AIR-KIT654H	Hardware	
	6mm x 60 mm Bolt	(4)
	6mm Flat Washer	(4)
	O Ring	(1)



NOT LEGAL FOR SALE OR USE ON ANY POLLUTION CONTROLLED MOTOR VEHICLE IN CALIFORNIA OR STATES ADOPTING CALIFORNIA EMISSION PROCEDURES.

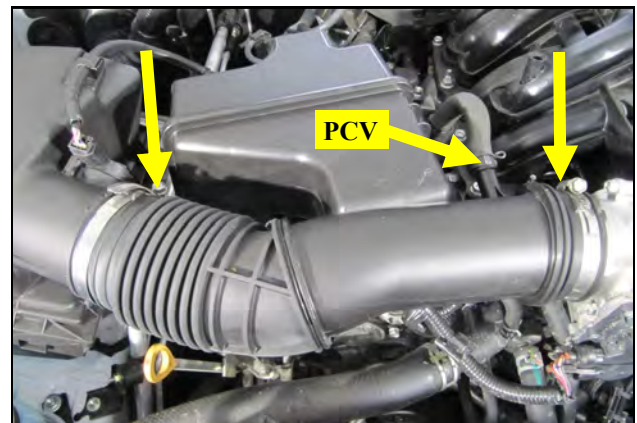
See Airaid.com for CARB status on each part for a specific vehicle

Thank you for purchasing the Airaid Throttle Body Spacer. Please read the instruction manual carefully before proceeding with the installation. Your Airaid Throttle Body Spacer was carefully inspected and packaged. Check that no parts are missing, or were damaged during shipping. If you need any assistance please call 1-800-858-3333 to speak with a representative in our Customer Service Center before returning the product.

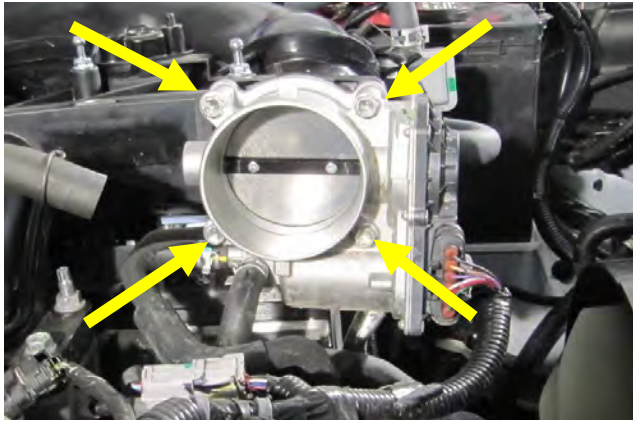
Thank you for selecting AIRAID.



1. Disconnect the negative battery cable.
Lift up on the engine cover to unseat it from the mounting grommets, remove it from the vehicle and set aside.



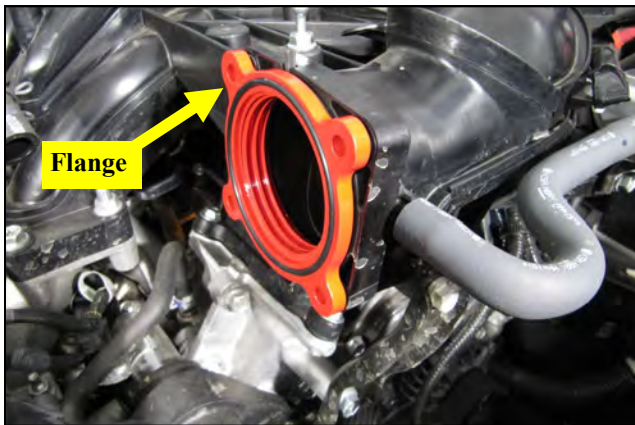
2. Loosen the clamps on the intake tube and disconnect the PCV breather. Remove the intake tube and set it aside.



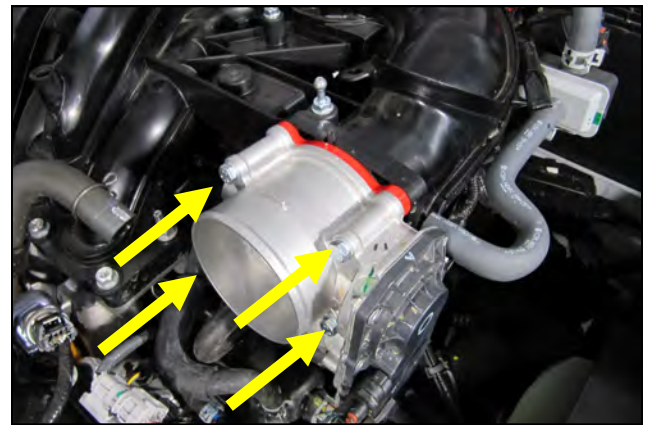
3. Remove the four bolts that secure the throttle body to the intake manifold. Without disconnecting the wiring harness, remove the throttle body from the intake manifold and set it to the side.



4. Gently press the O Ring into the Spacer flange as shown. Install Tip: For ease of installation, soapy water makes for a good O Ring Lube.



5. Insert the Airaid spacer into the intake manifold as shown. When properly installed, the O Ring flange will be facing outward.



6. Reinstall the throttle body on top of the Airaid Spacer using the four bolts and washers that are supplied with the kit. Tighten the bolts evenly, in a "X" pattern. Manually cycle the throttle plate by hand and confirm you have full range of motion.



7. Reinstall the intake tube and engine cover in the reverse order in which they were removed.
Re-connect the negative battery cable.

Contact your nearest Airaid dealer for the Airaid Intake System for your vehicle. PN 510-309 or 511-09

AIR-I51654D
Rev: 06.16.20