

# Airaid

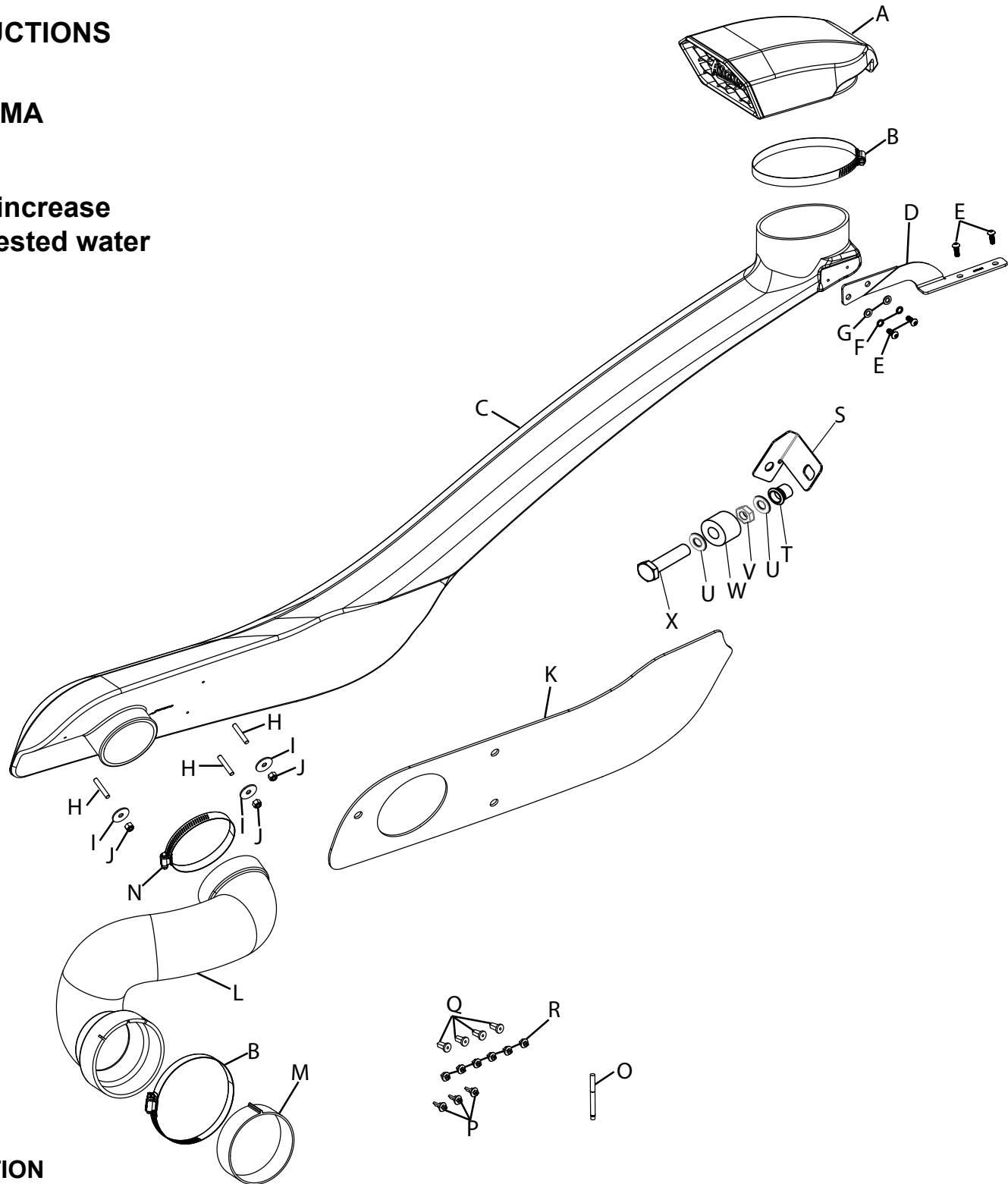
## INSTALLATION INSTRUCTIONS 600-100

2016-23 TOYOTA TACOMA  
V6-3.5L

**NOTE: This kit will not increase the manufacturer suggested water fording limit.**

### TOOLS NEEDED:

ratchet  
extension  
10mm socket  
13mm socket  
flat blade screw driver  
side cutters  
knife  
Drill motor  
1/2" drill bit  
1/8" drill bit  
4" hole saw  
4mm allen



### COMPONENT IDENTIFICATION

Description	Qty.	Part #	Description	Qty.	Part #	Description	Qty.	Part #
A SNORKLE TOP; W/GRILL (PH)	1	087600	I WASHER; 1" X .300 X .063 RBR	3	21685	Q SCREW; GROMMET, INNER	4	080602
B HOSE CLAMP; #72 BLK	2	08671KA	J NUT; 6MM NYLOCK HEXHD	3	07512	R CLIP; MOLDING, 10MM LONG	6	080603
C SNORKLE; (PI)	1	087513	K GASKET	1	09405	S BRACKET; "L"	1	064377
D BRACKET; SNORKLE MOUNT	1	010150	L COUPLER; OFFSET, 3.5"ID X 14"L	1	084113	T NUTSERT; RIVET, 6MM-1D	1	07555
E BOLT; M6 X 1 X 16MM	4	07730	M ADAPTER; SNORKEL AIRBOX	1	27319	U WASHER; 1" X 1/4" HOLE	2	08160
F WASHER; M6 SPLIT LOCK	2	1-3025	N HOSE CLAMP; #56 BLK	1	08620KA	V NUT; 3/8"-16, NYLOCK	1	08255
G WASHER; 6MM FLAT	2	08269	O THREADLOCKER; 2ML MED.	1	482	W SPACER; 3/4"OD X 21/64"ID	1	06506
H STUD; 6MM-1.00 X 35MM	3	08220	P CLIP; MOLDING, 17MM LONG	3	080604	X BOLT; M6-1.00 X 50MM HEXHD	1	22275

Full color instructions can be viewed on our web site at [Airaid.com](http://Airaid.com). If you need any assistance please call 1-800-498-6951 to speak with a representative in our Customer Service Center before returning the product.

### TO START:

1. Turn off the ignition and disconnect the negative battery cable.

**NOTE: Disconnecting the negative battery cable erases pre-programmed electronic memories. Write down all memory settings before disconnecting the negative battery cable. Some radios will require an anti-theft code to be entered after the battery is reconnected. The anti-theft code is typically supplied with your owner's manual. In the event your vehicles anti-theft code cannot be recovered, contact an authorized dealership to obtain your vehicles anti-theft code.**



2. Lift up the engine cover and remove it from the vehicle.



3. Disconnect the mass air sensor electrical connection and unhook the wiring harness from the air filter housing.

## Continued...



4. Disconnect the vent line attached to the factory intake tube and then loosen the two hose clamps that secure the tube. Remove the intake tube from the vehicle.



5. Release the clips securing the air filter housing lid and then remove the lid and air filter.



6. Remove the three bolts that secure the lower air filter housing and then remove the housing from the vehicle.



7. Remove the mud flap if equipped.



8. On vehicles equipped with fender flares, remove the four bolts that secure the flare to the fender.



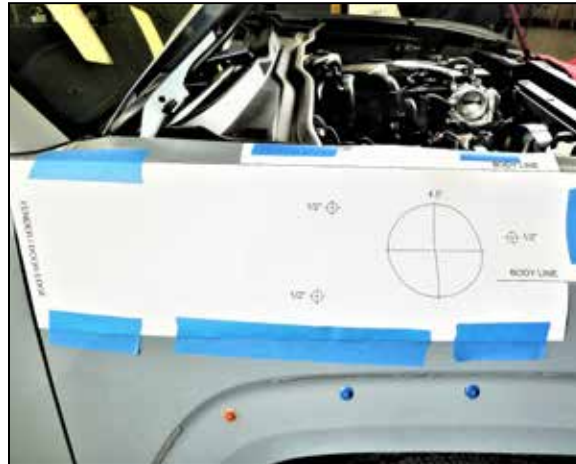
9. Remove the two bolts that secure the inner fender to the bottom of the front bumper cover.



10. On vehicles equipped with fender flares, Pull the inner fender back and reach in to release the three clips that secure the front side of the fender flare. Pull the fender flare off the fender. **NOTE: the flare is held on with two different style clips that may be destroyed while removing the flare. New clips are included for reassembly.**



11. Remove the screws from the top two black plastic clips that secure the top of the inner fender and then remove the two clips. **NOTE: The easiest way to remove these clips is to cut the tops off with side cutters and then push the remaining parts through the fender. New clips are provided.**



12. Cut the hole template provided and tape together. Tape the assembled template to the front fender as shown. Using the template guide, mark the four locations in the fender that will be drilled with a center punch or similar device. **NOTE: The fender sheet metal is thin, light tapping is all that is needed to mark the hole location.**



13. Drill a 1/8" pilot hole in all four locations to be drilled.



14. Drill three 1/2" holes for the snorkel mounting location and using a 4" hole saw, drill the 4" hole for the air duct. **NOTE: the 4" hole will be drilled through different angled surfaces, use caution while drilling to not distort the remaining sheet metal.**



15. Apply a coat of paint to the inside of the holes drilled to prevent corrosion.



16. **Vehicles that are equipped with a factory TOYOTA roof rack, skip to step #20.** Using a small screw driver or similar device, pry up the roof trim to expose the inserted nuts in the roof channel.



17. Using a knife, slice the sealing tape to allow access to the inserted nuts. **NOTE: Do not remove the tape, slicing the tape will allow the bolt to pass through.**

## Continued...



18. Align the snorkel mounting bracket with the inserted nuts and secure with the provided hardware. **NOTE: Be sure to apply the provided thread locker to the mounting bolts before installation.**



19. Set the roof trim back in position and note where the bracket interferes with the trim. Using side cutters or a razor blade, trim the roof trim so that it will lay flat back into the channel and around the bracket.



20. Peel the paper backing off the cushion pad and then apply the pad to the snorkel as shown.



21. Install the three m6 studs into the snorkel as shown.



22. **On vehicles without a factory TOYOTA roof rack**, install the snorkel onto the fender and secure it to the top mounting bracket with the hardware provided.



23. **On vehicles equipped with a factory TOYOTA roof rack**, install the snorkel onto the fender with the provided top bracket. Mark the location for the hole to be drilled into the roof rack.



24. Drill a 1/8" id pilot hole into the marked location on the roof rack and then drill a 25/64" id hole.



25. If a Rivnut setting tool is not available, assemble the provided hardware as shown to install the Rivnut. **NOTE: The nut passes over the threads of the bolt, it does not thread on.**



26. Using a 9/16" wrench to hold the nut and a 10mm socket and ratchet to tighten the bolt while applying downward pressure on the bolt. This compresses the Rivnut and grips the plastic of the roof rack. Tightening force will be high initially and then lessen until the Rivnut is set. Force will ramp up again once set, do not over tighten.



27. Install the upper mounting bracket and secure with the provided hardware.



28. Install the snorkel scoop onto the snorkel and secure with the provided hose clamp.



29. Replace the two inner fender retaining clips with the clips provided and then reinstall the two factory screws.

## Continued...



30. If equipped with fender flares and or mud flap, reinstall them onto the fender.



31. Reinstall the lower air filter housing and secure with the factory hardware. Secure the snorkel duct to the air filter housing with the provided hose clamp. **NOTE: It may be necessary to move the washer bottle to gain access and tighten the hose clamp.**



31A. if using an AIRAID intake kit, install the provided flexible spacer onto the AIRAID filter housing inlet as shown. Using a marker, draw a line around the inlet using the spacer as a guide.



31B. Cut the inlet of the housing at the marked line.



31C. Drill two 3/8" id holes into the bottom of the AIRAID air filter housing for water drainage.



31D. Install the flexible spacer into the flexible duct as shown and then the AIRAID air filter housing can be installed.



32. Install the air filter and upper housing.



33. Reinstall the intake tube and secure with the factory hose clamps. Reconnect the vent lines.



34. Reconnect the mass air sensor electrical connections and secure the wiring harness.



35. Reinstall the engine cover.

### 36. Double check your work!

Make sure there is no foreign material in the intake path. Make sure all clamps, hoses, bolts, and screws are tight. Double check the hood clearance! **Reconnect the negative battery cable!**

Thank you for purchasing the Airaid Intake System. Contact Airaid @ (800) 498-6951 8:00 AM - 5:00 PM MST weekdays for questions regarding fit or instructions that are not clear to you. Your Airaid Intake System was carefully inspected and packaged. Check that no parts are missing, or were damaged during shipping. If any parts are missing, contact Airaid. The air filter element is protected from direct exposure to water and debris; care should be taken not to drive through deep water. **WATER INGESTION IS THE DRIVERS RESPONSIBILITY!** The air filter is reusable and should be cleaned periodically.

For your Oiled media filter we offer the Airaid Tune Up Kit!



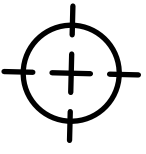
P/N 790-551 Aerosol Spray  
P/N 790-550 Squeeze Spray



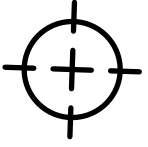
Synthamax Air Filters **do not** require oil. Service air filter as needed by cleaning with common non-petroleum all-purpose household cleaner and water. Simple Green®, Formula 409® or equivalent works great. Apply cleaner to outside of air filter and allow to soak. Then flush filter clean from the inside out with a garden hose and repeat steps if necessary. Do not apply high pressure water or air to clean filter. Allow filter to air dry and reinstall.

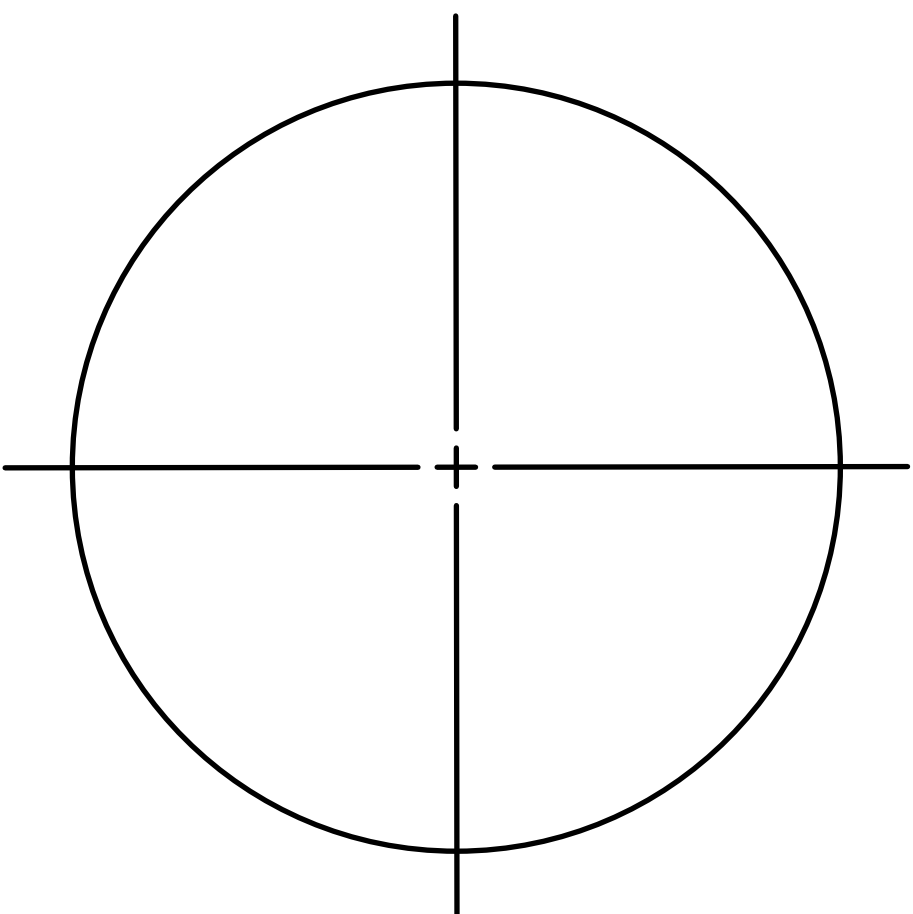
FENDER / HOOD EDGE

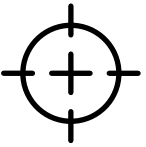
BODY LINE

1/2" 

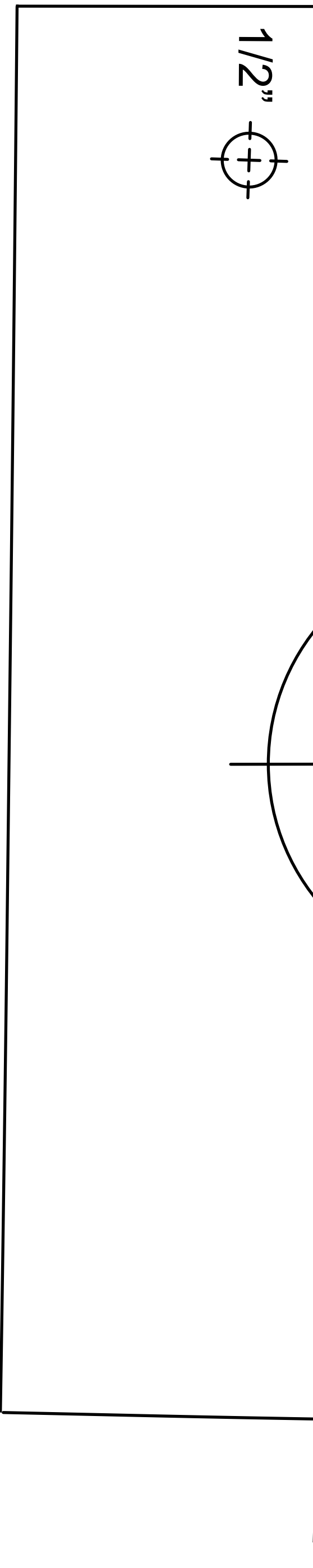
4"

1/2" 



 1/2"

BODY LINE





FENDER / DOOR EDGE

