

Airaid

INSTALLATION INSTRUCTIONS

600-101

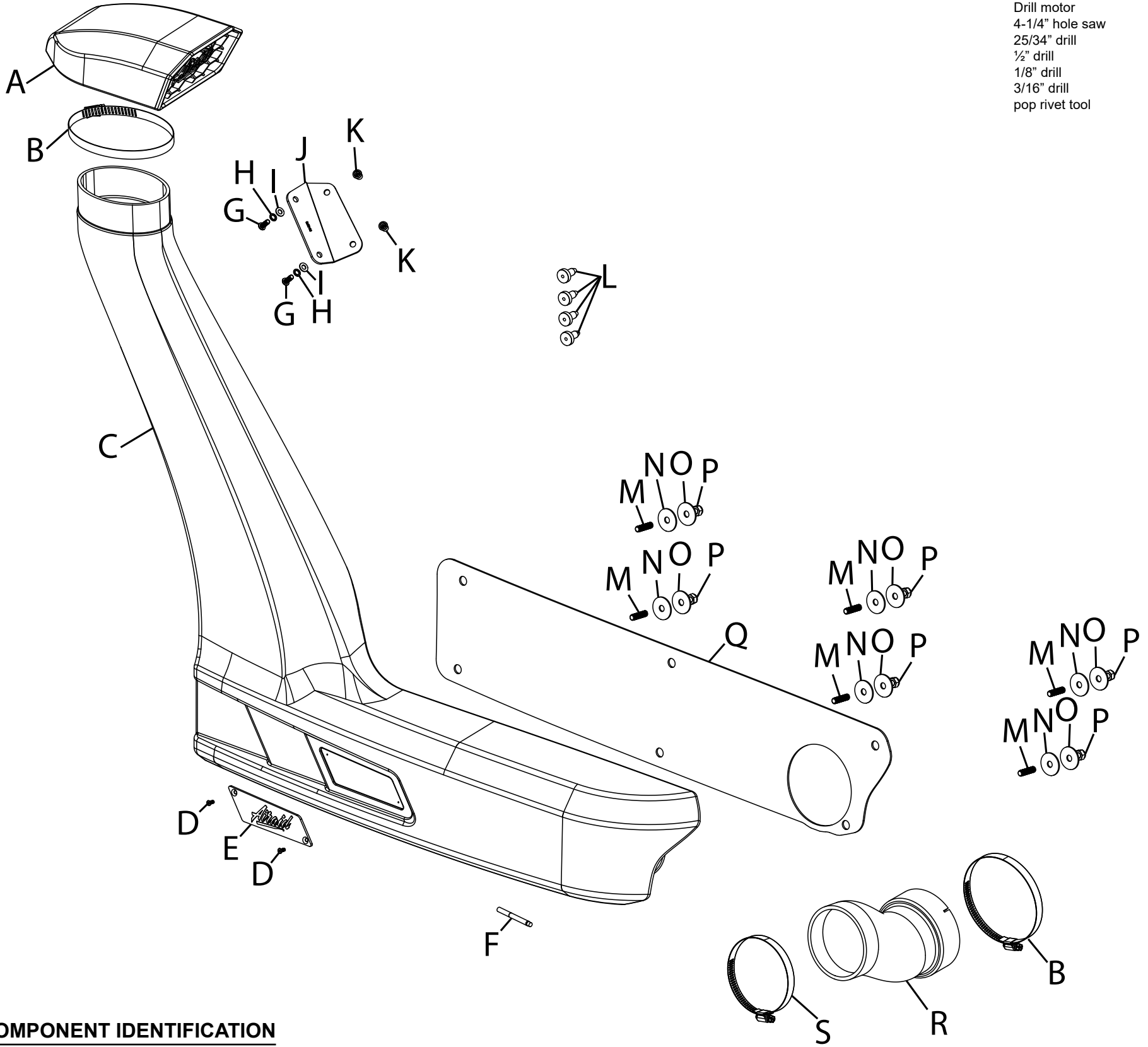
2010-22 TOYOTA 4RUNNER

V6-4.0L

NOTE: This kit will not increase the manufacturer suggested water fording limit.

TOOLS NEEDED:

Ratchet
 Extension
 10mm socket
 12mm
 13mm socket
 14mm socket
 Pliers
 Deburring tool or sand paper
 Touch-up paint
 Center punch
 Panel popper tool
 Drill motor
 4-1/4" hole saw
 25/34" drill
 1/2" drill
 1/8" drill
 3/16" drill
 pop rivet tool



COMPONENT IDENTIFICATION

Description	Qty.	Part #	Description	Qty.	Part #	Description	Qty.	Part #
A SNORKLE TOP; GRILL (PH)	1	087600	I WASHER; 1/4"ID X 5/8"OD	2	08275	Q GASKET; FENDER	1	09406
B HOSE CLAMP; #72 BLK	2	08671KA	J BRACKET; SNORKEL MOUNT	1	064373	R COUPLER; ADAPTER	1	084130
C SNORKEL; (QA)	1	087532	K RIVET; 3/16"OD, 4.3"GRIP	2	22280	S HOSE CLAMP; #64	1	08645KA
D BOLT; 4MM X 10MM	2	22277	L SCREW GROMMET; INNER	4	080602			
E BADGE; AIRAID SCREW ON	1	088105	M STUD; 8MM DOUBLE END	6	070225			
F THREADLOCK; 2ML BLUE	1	482	N WASHER; 5/16 X 1.25"	6	08130			
G BOLT; M6 X 1 X 16MM BTNHD	2	07730	O WASHER; 1.25"OD X .30"ID	6	21708			
H WASHER; M6 SPLIT LOCK	2	1-3025	P NUT; 8MM NYLOCK	6	07502			

Full color instructions can be viewed on our web site at Airaid.com. If you need any assistance please call 1-800-498-6951 to speak with a representative in our Customer Service Center before returning the product.

TO START:

1. Turn off the ignition and disconnect the negative battery cable.

NOTE: Disconnecting the negative battery cable erases pre-programmed electronic memories. Write down all memory settings before disconnecting the negative battery cable. Some radios will require an anti-theft code to be entered after the battery is reconnected. The anti-theft code is typically supplied with your owner's manual. In the event your vehicles anti-theft code cannot be recovered, contact an authorized dealership to obtain your vehicles anti-theft code.



2. Disconnect the mass air sensor electrical connection and unhook the harness from the air filter housing. Remove the engine cover.



3. Disconnect the CCV hose and fuel pressure regulator vent line from the factory intake tube. Loosen the hose clamps that secure the factory intake tube and remove the tube from the vehicle.



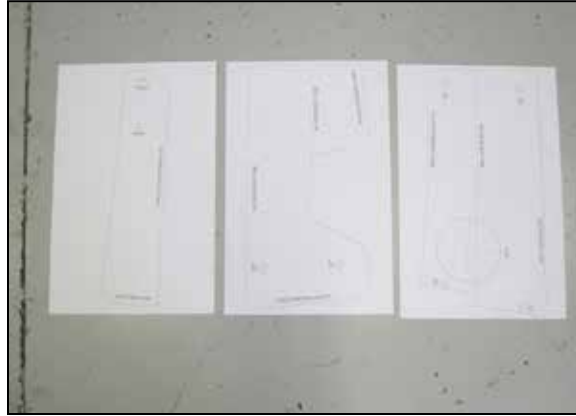
4. Release the over-center clamps that secure the upper air filter housing and then remove the upper housing. Remove the bolts that secure the lower housing to the inner fender and then remove the lower housing from the vehicle.



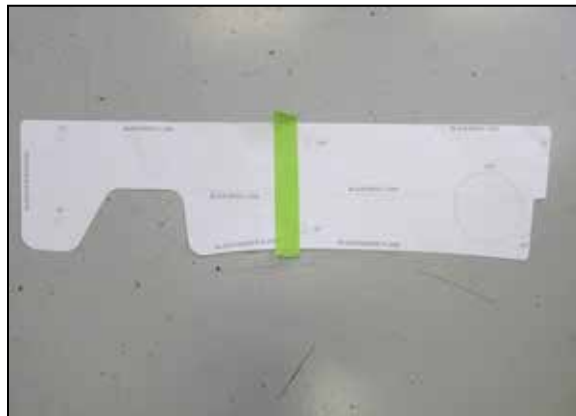
5. Remove the bolts that secure the inner fender well to the fender.



6. Carefully Pull back the inner fender to release the tabs enabling the inner fender to be pulled down to allow access behind the fender. **NOTE: Replacement black screw grommets are provided incase the factory grommets break.**



7. Locate the cut templates in the instruction sheet and cut out.



8. Tape the fender templates together.



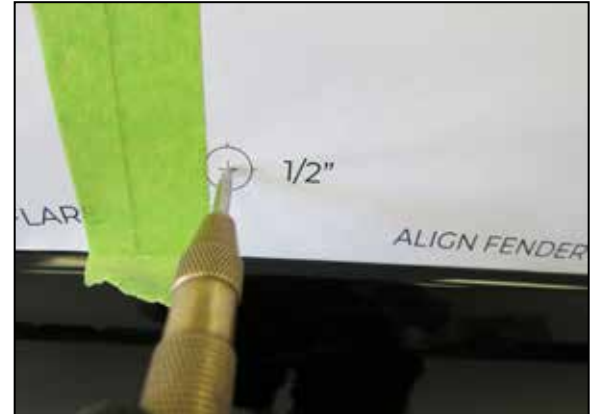
9. Tape the fender cut template to the fender.



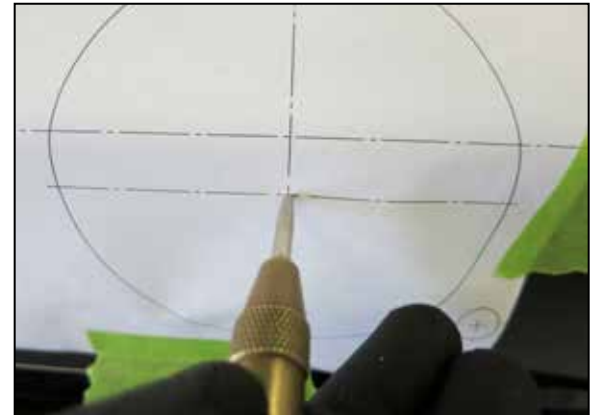
10. Tape the "A" pillar template onto the pillar.



11. Verify the templates are positioned correctly using the text and lines printed on the template.



12. Us a center punch or similar device to mark the center of all the 1/2" holes to be drilled.



13. Us a center punch or similar device to mark the center of the 4-1/4" hole to be drilled.



14. Once all the holes to be drill are marked, drill a 1/8" pilot hole for each hole.



15. Drill the 1/2" holes with a 1/2" drill bit. Deburr the holes.

Continued...



16. Drill the hole for the snorkel outlet with a 4-1/4" hole saw. Deburr the hole.



17. Use touch up paint or similar paint to paint the raw metal to prevent corrosion.



18. Install the provided M8 studs onto the snorkel and then apply gasket material to the back of the snorkel.



19. Temporarily install the snorkel onto the fender with the "A" pillar mounting bracket installed onto the snorkel. Check the alignment of the hole position of the template to the bracket and adjust as necessary. Remove the Snorkel assembly from the fender. Using a Center punch to mark the center of the holes to be drilled. **NOTE: Use patience and double check the alignment of the template before marking the holes to be sure they are in the correct position.**



20. Use a 3/16" drill for the "A" pillar mounting bracket holes. Go slow and do not push hard while drilling to prevent drill bit wander. Use tape or vacuum hose to create a 5/8" stop on the drill bit so the drill will only go 5/8" past the outer sheet metal.



21. Use touch up paint to paint the raw sheet metal to prevent corrosion.



22. Install the AIRAID badge to the snorkel with the provided hardware.



23. Install the snorkel bracket onto the "A" pillar using the provided rivets.



24. Install the snorkel onto the fender.



25. Secure the snorkel to the fender using the nuts and fender washers provided.



26. Secure the snorkel to the "A" pillar bracket with the hardware provided.



27. Install the coupling hose through the hole in the inner fender and connect it to the snorkel outlet. Secure with the provided hose clamp.



28. Reinstall the inner fender and secure with the factory hardware. **NOTE: Replacement black screw grommets are provided incase the factory grommets break.**

Continued...



29. Remove the angled duct from the factory lower air filter housing.



30. Reinstall the lower housing so the inlet goes into the snorkel hose. Secure with the provided hose clamp and factory hardware.



31. Reinstall the upper housing and air filter, secure with the factory over center clamps.



32. Reinstall the factory intake tube, reconnect the CCV and vent hoses, reconnect the mass air sensor electrical connection and reinstall the engine cover.



33. If you are installing this kit onto a vehicle equipped with an AIRAID intake kit, drill two 3/8" drain holes into the bottom of the AIRAID filter housing.



34. Cut 1-1/4" off of the fresh air inlet.



35. Reinstall the AIRAID filter housing and secure with the hose clamp and hardware provided.



36. Install the snorkel scoop onto the Snorkel and secure with the provided hose clamp.



37. Double check your work!

Make sure there is no foreign material in the intake path. Make sure all clamps, hoses, bolts, and screws are tight. Double check the hood clearance! **Reconnect the negative battery cable!**

Thank you for purchasing the Airaid Intake System. Contact Airaid @ (800) 498-6951 8:00 AM - 5:00 PM MST weekdays for questions regarding fit or instructions that are not clear to you. Your Airaid Intake System was carefully inspected and packaged. Check that no parts are missing, or were damaged during shipping. If any parts are missing, contact Airaid. The air filter element is protected from direct exposure to water and debris; care should be taken not to drive through deep water. **WATER INGESTION IS THE DRIVERS RESPONSIBILITY!** The air filter is reusable and should be cleaned periodically.

For your Oiled media filter we offer the Airaid Tune Up Kit!

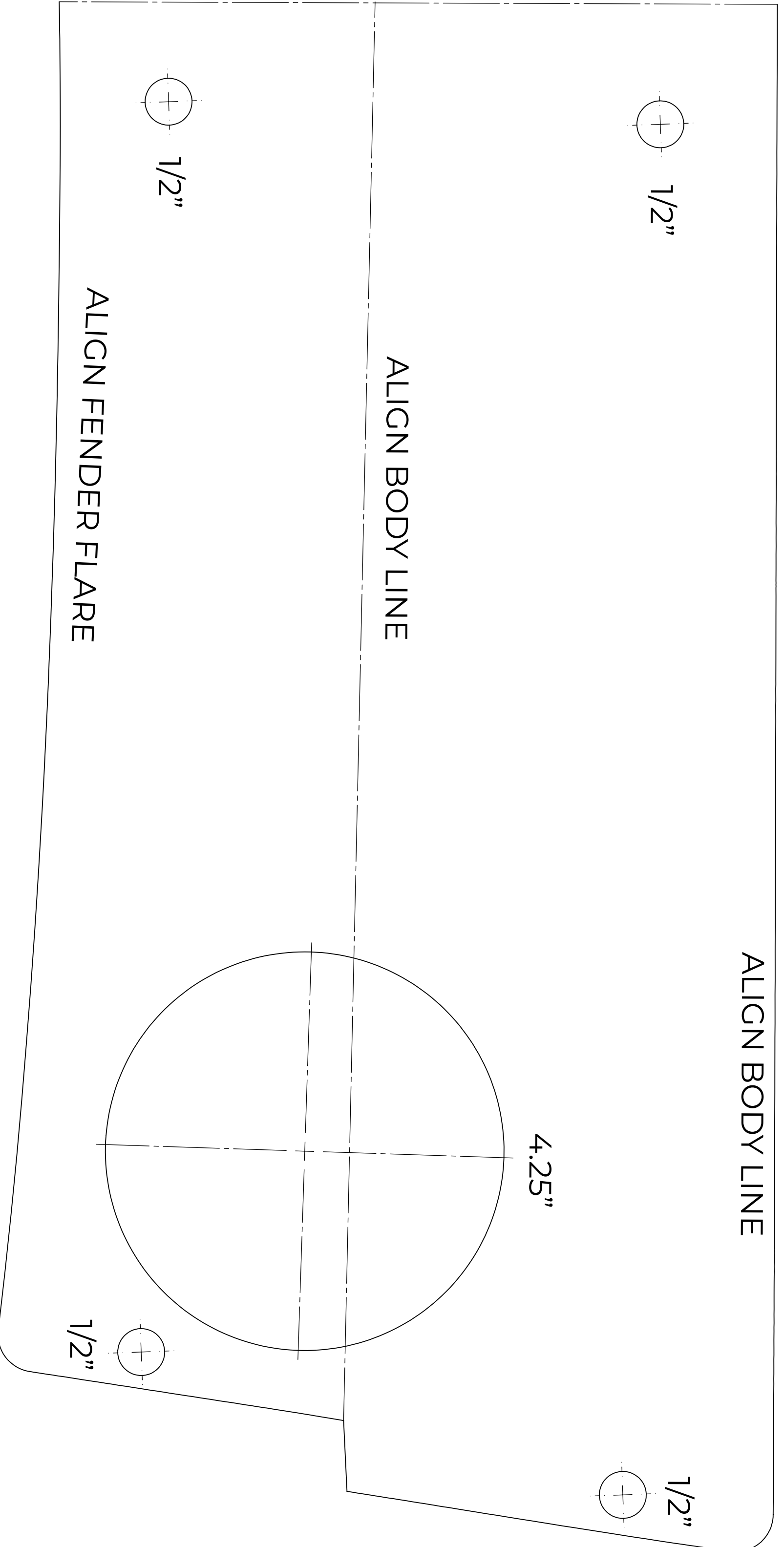


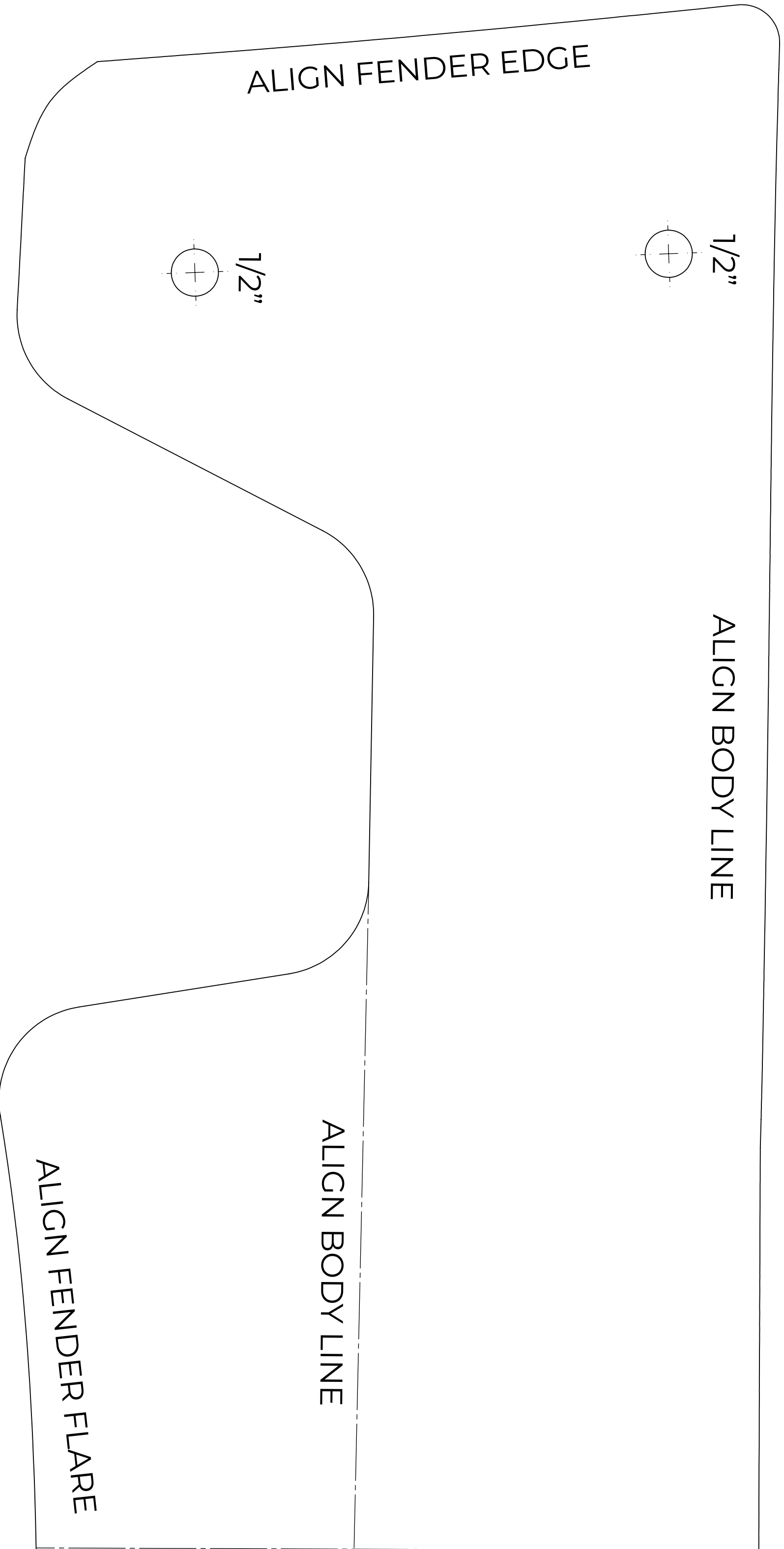
P/N 790-551 Aerosol Spray
P/N 790-550 Squeeze Spray



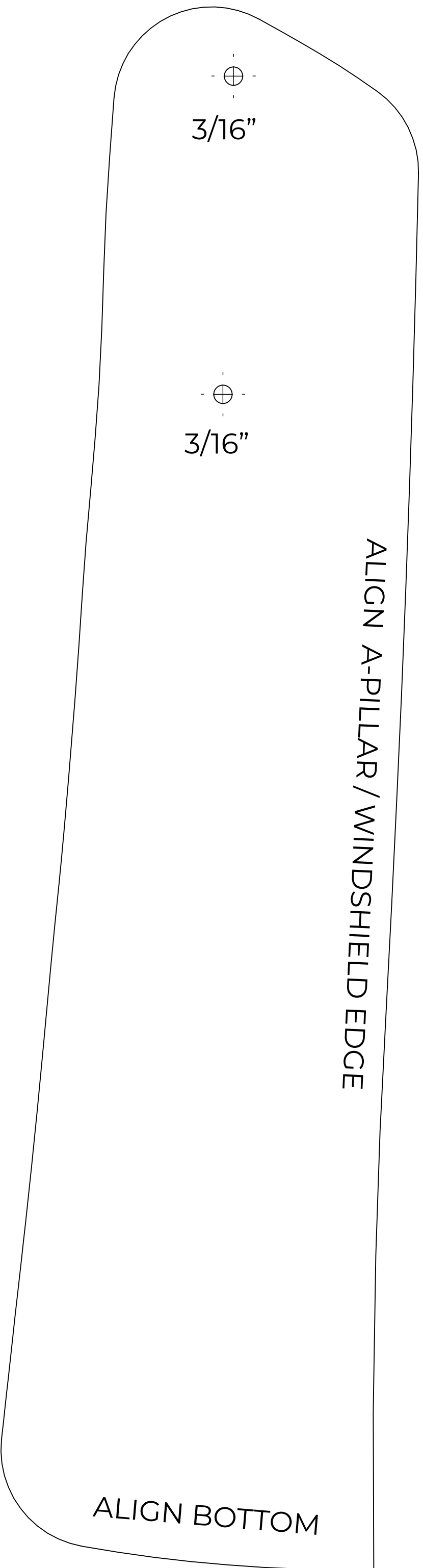
SynthaMax

Synthamax Air Filters do not require oil. Service air filter as needed by cleaning with common non-petroleum all-purpose household cleaner and water. Simple Green®, Formula 409® or equivalent works great. Apply cleaner to outside of air filter and allow to soak. Then flush filter clean from the inside out with a garden hose and repeat steps if necessary. Do not apply high pressure water or air to clean filter. Allow filter to air dry and reinstall.





MUST BE SCALED AT 100% REV A 5/16/2022



MUST BE SCALED AT 100% REV C 11/1/2022

