

Parts List

1	Driver / left, side bar
1	Passenger / right, side bar
1	Mounting bracket, driver / left, front
1	Mounting bracket, passenger / right, front
1	Mounting bracket, driver / left, rear
1	Mounting bracket, passenger / right, rear
5	Hex bolt, M6 - 1.00 x 25mm
5	Flat washer, M6 - 1.50mm
5	Lock washer, M6
2	Bolt plate, M8 - 1.25 x 20mm
8	Hex bolt, M8 - 1.25 x 25mm
2	Flat washer, M8 - 1.50mm
2	Lock washer, M8
2	Hex nut, M8
2	U-bolt, M10 - 1.50
8	Hex bolt, M10 x 30mm
4	Flat washer, M10 - 1.50mm
8	Flat washer, M10 - 2.00mm
12	Lock washer, M10
4	Hex nut, M10

Level of Difficulty

Moderate



Scan for helpful install tips

Product Image



Notes and Maintenance

Before you begin installation, read all instructions thoroughly.

Proper tools will improve the quality of installation and reduce the time required.

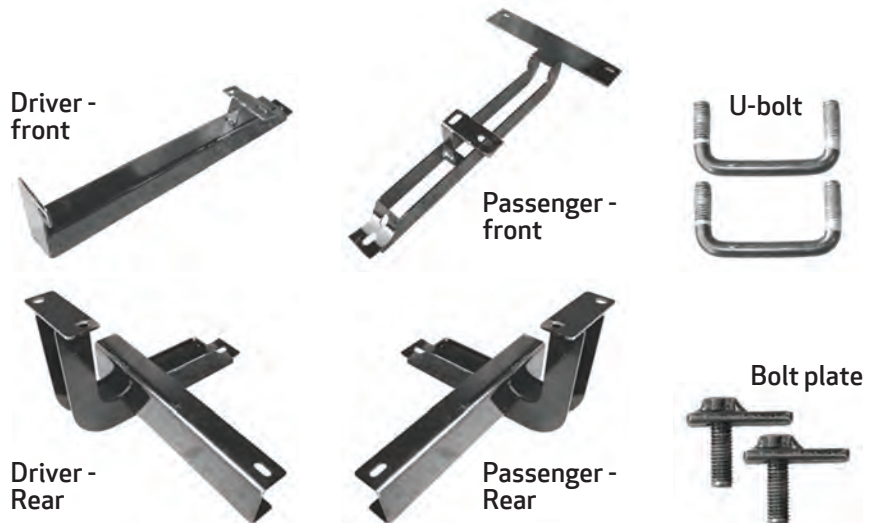
For stainless steel and aluminum, polish may be used to clear small scratches and scuffs on the finish. Mild soap may be used also to clean the product.

Refer to the table to the left when securing hardware during the installation process to help prevent damage to the product or vehicle.

Brackets and Hardware

Torque Specifications

	Torque Specifications	
METRIC	M6 bolt	3 ft.-lbs.
	M8 bolt	7 ft.-lbs.
	M10 bolt	16 ft.-lbs.
	M12 bolt	28 ft.-lbs.
SAE	1/4" bolt	3 ft.-lbs.
	5/16" bolt	7 ft.-lbs.
	3/8" bolt	16 ft.-lbs.
	7/16" bolt	20 ft.-lbs.
	1/2" bolt	28 ft.-lbs.



PROCEDURE:

1. REMOVE CONTENTS FROM BOX. VERIFY ALL PARTS ARE PRESENT. READ INSTRUCTIONS CAREFULLY BEFORE STARTING INSTALLATION. SOME CUTTING REQUIRED.

Driver Side Front Mounting Bracket Installation:

2. Remove the factory screw on the inside of the frame rail located by the front of the vehicle (**Figure 1**).
3. In the same direction where the factory screw is located there is a plastic plug covering the factory hole in the side panel. Use a flat screw driver to remove the plastic plug (**Figure 1**). **NOTE:** This plastic plug is covered with tar and is very hard to find it. Push along the side panel until you feel a soft spot.
4. Insert one of the 8mm x 20mm Bolt Plates into the factory hole in the side panel (**Figure 2**).
5. Position Bracket up to the vehicle, and partially attach the outside of the Bracket to already inserted bolt plate using the included (1) 8mm Hex Nut, (1) 8mm Lock Washer, and (1) 8mm Flat Washer (**Figure 3 & 4**).
NOTE: 04-05 Models mount in the hole towards the rear of the vehicle and 06-08 Models mount in the hole towards the front of the vehicle.
6. Attach the inside of the Bracket to previously removed factory bolt mounting location. Replace the factory bolt with the included (1) 6mm x 25mm Hex Head Bolt, (1) 6mm Lock Washer, and (1) 6mm Flat Washer (**Figure 3 & 5**). Do not tighten at this time.

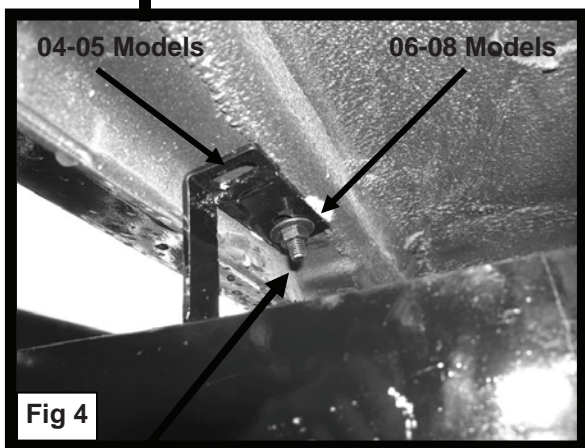
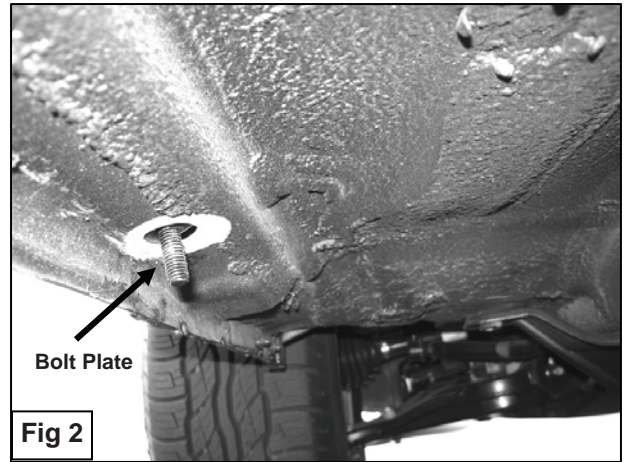
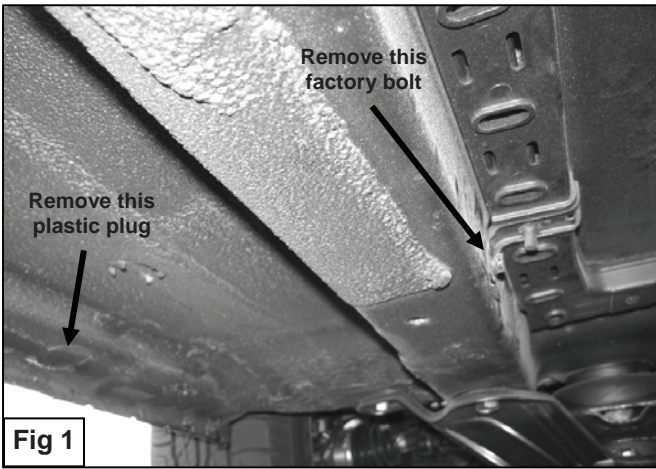
Passenger Side Front Mounting Bracket Installation:

7. Remove the two factory bolts holding the outside of the heat shield (**Figure 6**). **NOTE:** You will be replacing these factory bolts with the included 6mm hardware.
8. Slightly pull down on the heat shield and place Bracket between the heat shield and the side rail. Temporarily install the Bracket without the heat shield with the included (2) 6mm x 25mm Hex Head Bolts, (2) 6mm Lock Washers, and (2) 6mm Flat Washers. Push back the heat shield until it reaches the Bracket and mark the cutting location on the heat shield (**Figure 7**).
9. Remove Bracket from vehicle and use a pair of sheet metal cutting scissors to cut out the marked location.
10. In the same direction where the front factory screw is located there is a plastic plug covering the factory hole in the side panel. Use a flat screw driver to remove the plastic plug (**Figure 6**). **NOTE:** This plastic plug is covered with tar and is very hard to find it. Push along the side panel until you feel a soft spot.
11. Insert one of the 8mm x 20mm Bolt Plates into the factory hole in the side panel (**Figure 8**).
12. Position Bracket up to the side rail and place heat shield over Bracket. Attach heat shield and Bracket to side rail using the hardware listed in step six (**Figure 9**).
13. Attach the outside of the Bracket to already inserted Bolt Plate using the included (1) 8mm Hex Nut, (1) 8mm Lock Washer, and (1) 8mm Flat Washer (**Figure 10**). Do not tighten at this time. **NOTE:** 04-05 Models mount in the hole towards the rear of the vehicle and 06-08 Models mount in the hole towards the front of the vehicle.

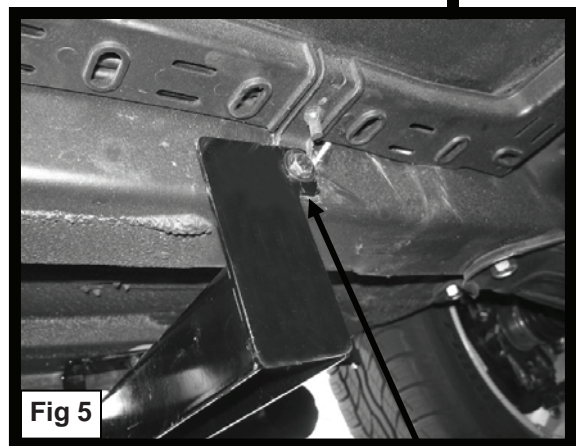
Rear Mounting Brackets Installation:

14. Starting on the driver side, remove the oval shape rubber plug and the round plastic plug located in the rear side of the floor panel(**Figure 11**). Use a flat screw driver to remove the plastic plug. **NOTE:** This plastic plug is covered with tar and is very hard to find it. Push on the rear side of the oval shape hole until you feel a soft spot.
15. Remove a factory bolt located in the side panel by the front of the oval shape hole (**Figure 12**). **NOTE:** You will be replacing this bolt with the included 6mm bolt.
16. Insert one of the included "U" Bolts through oval shape hole and round hole (**Figure 13**). Partially hang rear Mounting Bracket to already inserted "U" Bolt using the included (2) 10mm Hex Nuts, (2) 10mm Lock Washers, and (2) 10mm Flat Washers (**Figure 14**).
17. Attach the front end of the Mounting Bracket to threaded hole in the side panel using the included (1) 6mm x 25mm Hex Bolt, (1) 6mm Lock Washer, and (1) 6mm Flat Washer (**Figure 15**).
18. Position driver Sidebar onto Mounting Brackets and attach it using the included (4) M10 Hex Head Bolts, (4) M10 Lock Washers, and (4) M10 Flat Washers (**Figure 16**).
19. Level and adjust Sidebar properly; and then tighten all hardware at this time.
20. Repeat steps 13-18 for passenger side.
21. Do periodic inspections to the installation to make sure that all hardware is secure and tight.

Driver Side Front Mounting Bracket Installation Shown

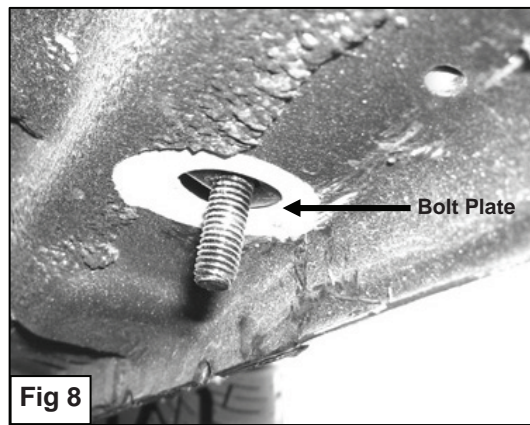
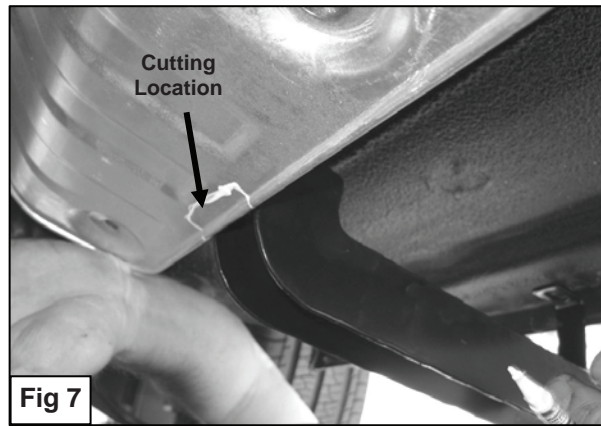
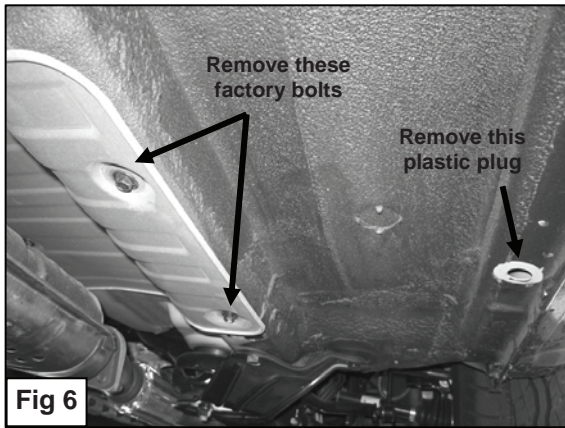


(Bolt Plate)
8mm Hex Nut
8mm Lock Washer
8mm Flat Washer

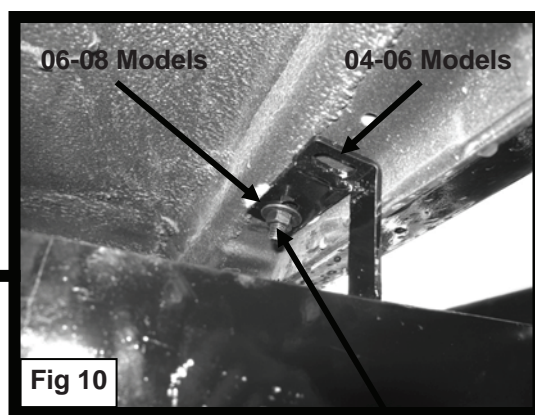


6mm x 25mm Hex Bolt
6mm Lock Washer
6mm Flat Washer

Passenger Side Front Mounting Bracket Installation Shown



6mm x 25mm Hex Bolts
6mm Lock Washers
6mm Flat Washers



(Bolt Plate)
8mm Hex Nut
8mm Lock Washer
8mm Flat Washer

Driver Side Rear Mounting Bracket Installation Shown

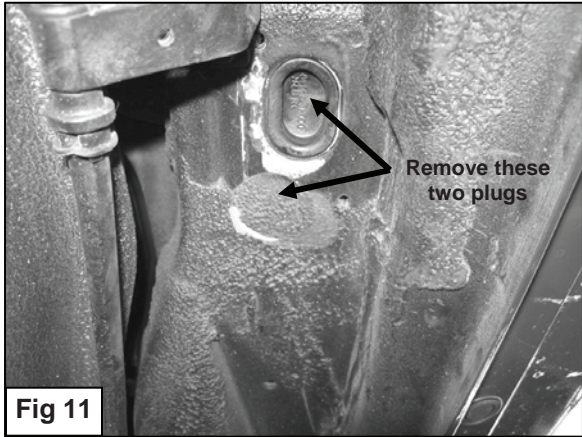


Fig 11

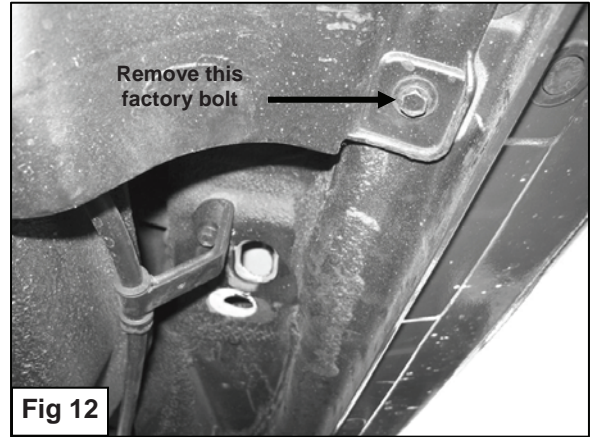


Fig 12

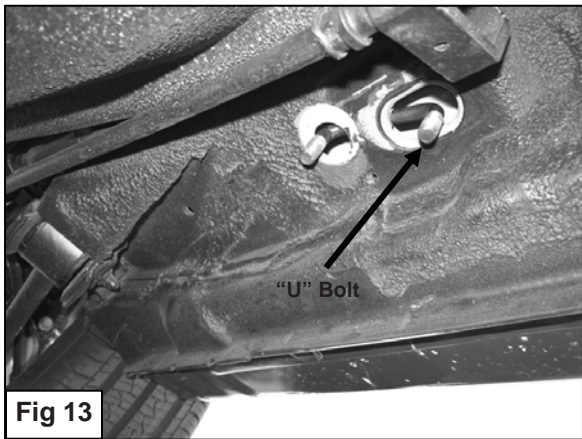


Fig 13

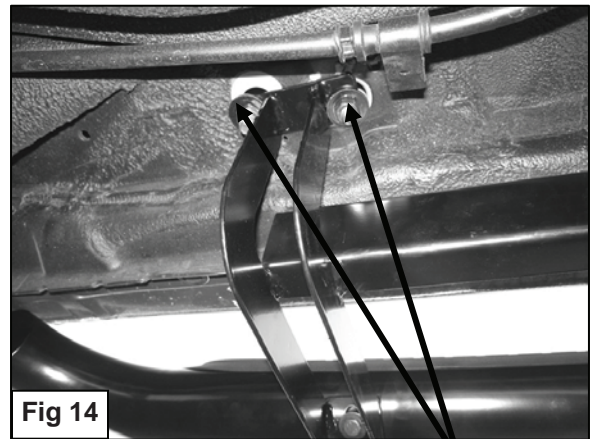


Fig 14

"U" Bolt
10mm Hex Nuts
10mm Lock Washers
10mm Flat Washers

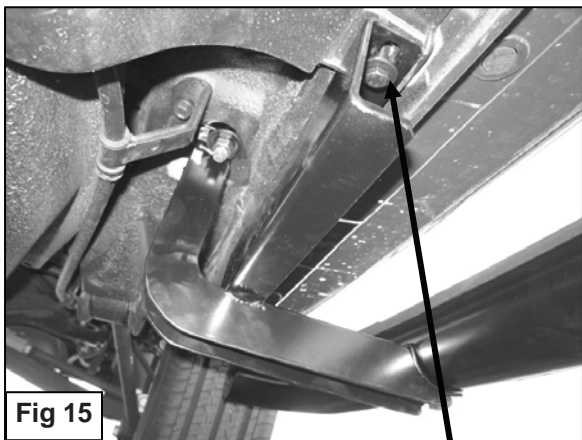


Fig 15

6mm x 25mm Hex Bolt
6mm Lock Washer
6mm Flat Washer

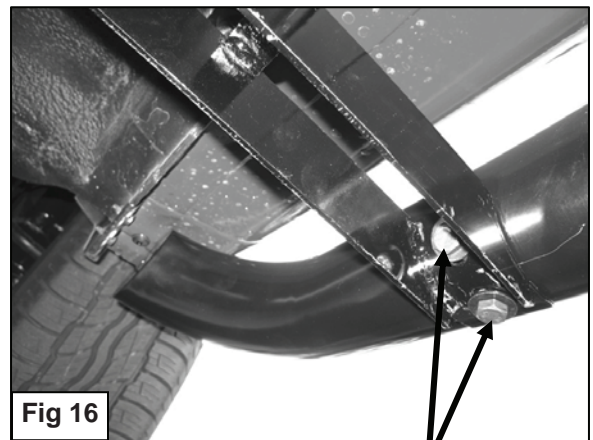


Fig 16

M10 Hex Bolts
M10 Lock Washers
M10 Flat Washers (D10*D25*2)