

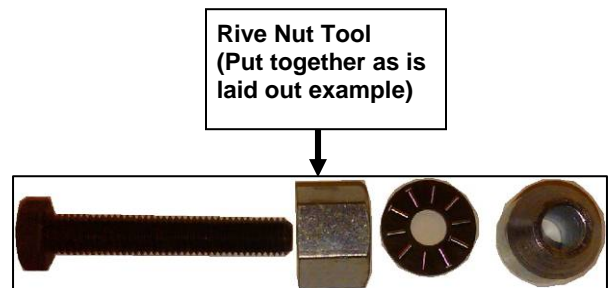
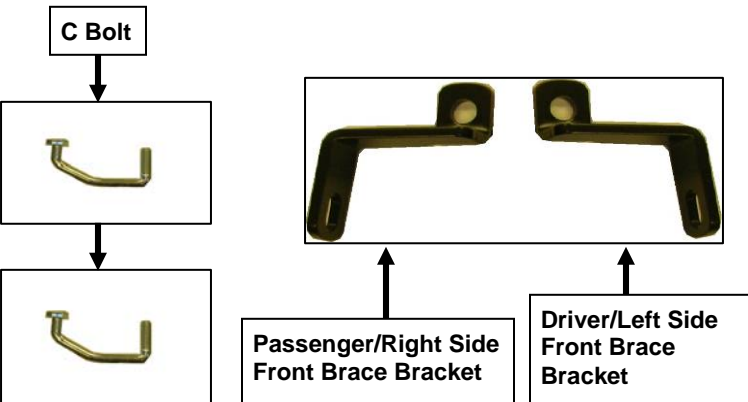
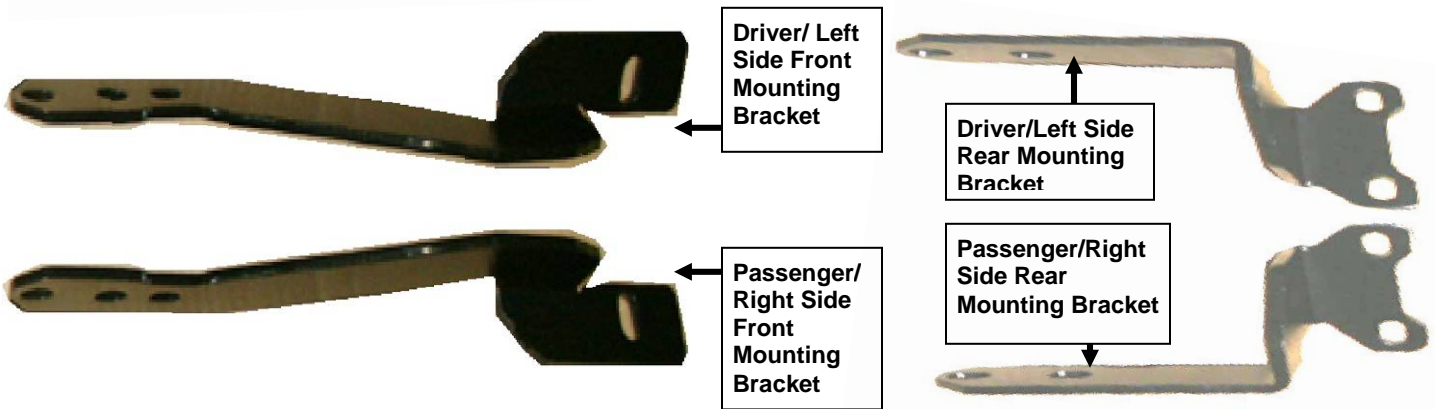
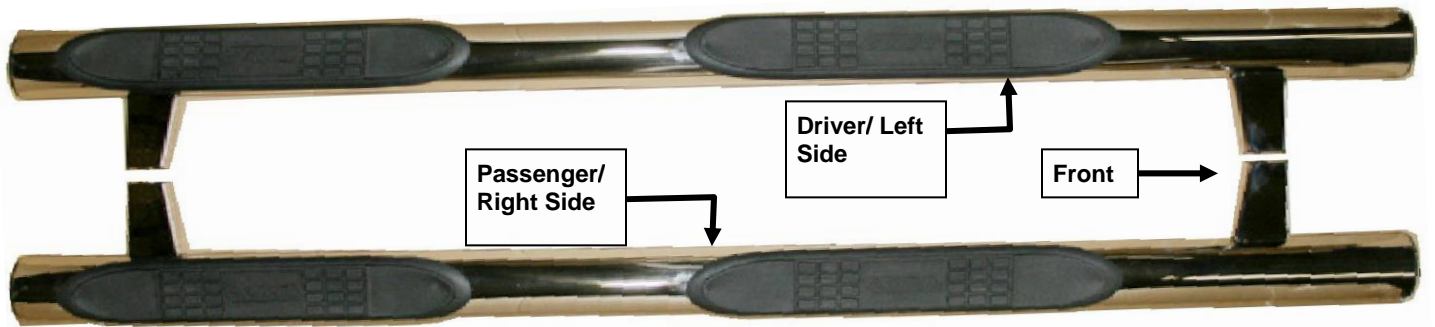
INSTALLATION INSTRUCTIONS

200801 / 200801-2

2009-2010 SUBARU FORRESTER

PARTS LIST:

Qty	Description	Qty	Description
1	Driver/Left Sidebar	3	Rive Nuts
1	Passenger/Right Sidebar	8	10mm x 35mm Hex Bolts
1	Driver/Left Front Mounting Bracket	8	10mm lock nuts
1	Passenger/Right Front Mounting Bracket	16	10mm Flat washers
1	Driver/Left Rear Mounting Bracket	4	8mm x 30mm Hex Bolts
1	Passenger/Right Rear Mounting Bracket	10	8mm Flat washers
1	Driver/Left Front Brace Bracket	6	8mm Lock washers
1	Passenger/Right Front Brace Bracket	4	8mm Nuts
2	C Bolts	2	25mm x shims
1	Rive nut tool		



PROCEDURE:

- 1. REMOVE CONTENTS FROM BOX. VERIFY ALL PARTS ARE PRESENT. READ INSTRUCTIONS CAREFULLY BEFORE STARTING INSTALLATION.**
- Starting with the passenger/right side-front of the vehicle, located at the bottom of the frame rail just behind the tire are (2) holes on the frame rail **(Fig 1)** shows location, select (1) C Bolt (1) 25mm shim and (1) 8mm flat washer place the flat washer followed by the shim on the C Bolt and then take the C Bolt and place it through one of the hole in the frame rail through to the other side and out the other hole **(Fig 2)** shows placement.
- Select the passenger side front Mounting Bracket from the list of parts above, position the Mounting Bracket onto the installed C Bolt, Secure it with (1) 8mm Flat Washers, (1) 8mm Lock Washers and (1) 8mm Hex Nuts, **(Fig 3)**. Snug but do not tighten hardware at this time.
- Next, select the Passenger/right side brace bracket from the list of parts above and place it up to where it comes in contact with the front mounting bracket and floor board, **(Fig 4)**, there is a plastic push pin (remove this pin) now with the pin removed assemble the Rive nut tool supplied. **(See Fig 4A for tool assembly)**. Once assembled thread a rive nut on to the tread part of the tool insert the rive nut into the hole from where the push pin came out from, Holding the rive nut up to the hole firmly place a wrench on the bottom of the rive nut tool (Note: this bolt you do not want it to turn). only turn the large nut on the tool clockwise as much as possible with a second wrench, this will cause the rive nut to collapse on its self securing it to the vehicles floor board (Fig 4B shows tool with rive nut and procedure outside of hole) once you have secured the rive nut to the floor board unscrew the large nut from the tool counter clock wise, this will remove tension from the tool then unscrew the bolt from the rive nut. (See Fig 4C for rive nut secured in hole)
- Place the Passenger/right side brace bracket up and into place secure it to the rive nut with (1) 8mm hex bolt (1) 8mm flat washer (1) 8mm lock washer Line up the other end of the Support Bracket up with the front mounting bracket and secure it with (1) 8mm hex bolt (2) 8mm flat washers (1) 8mm lock washer and (1) 8mm nut. **(Fig 5)** shows mounting bracket attached snug but do not tighten hardware.
- Moving to the passenger/right side rear of the vehicle, remove the factory tow strap bracket **(Fig 6)** shows location of bracket once remove select the Passenger/right side rear bracket and secure it with the factory bolts that secured the tow strap bracket **(Fig 7)** shows mounting bracket attached. Snug but do not tighten hardware at this time.
- Next, select the passenger/right sidebar and fasten it to the front mounting bracket with the included (2) 10mm x 35mm Hex head bolts, (4) 10mm flat washers and (2) 10mm lock nuts **(Fig 8 & 8A)** shows front & back brackets attached. Do not tighten at this time. Repeat this step for rear Sidebar mounting.
- Level and align Sidebar properly; then tighten all hardware at this time **(Fig 9)** shows sidebar attached installation complete.
- Repeat steps 2-8 for Driver/left Sidebar.
- Do periodic inspections to the installation to make sure all hardware is secure and tight.

To protect your investment, wax this product after installing. Regular waxing is recommended to add a protective layer over the finish. Do not use any type of polish or wax that may contain abrasives that could damage the finish.

For stainless steel: Aluminum polish may be used to polish small scratches and scuffs on the finish. Mild soap may be used also to clean the Sidebar.

For gloss black finishes: Mild soap may be used to clean the Sidebar.

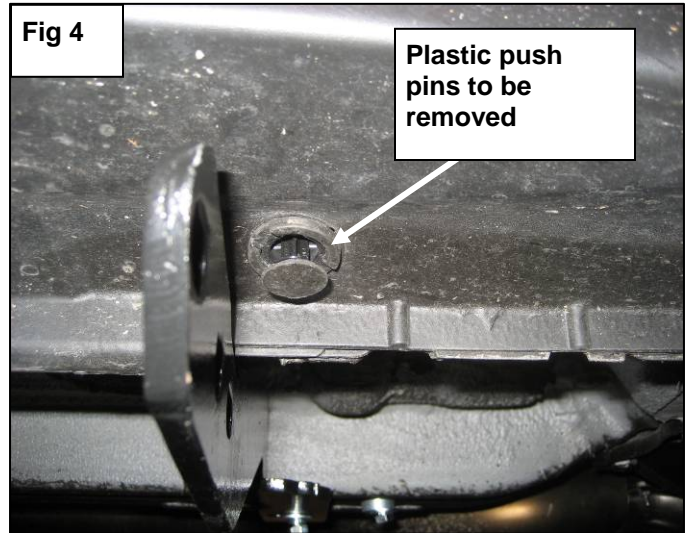
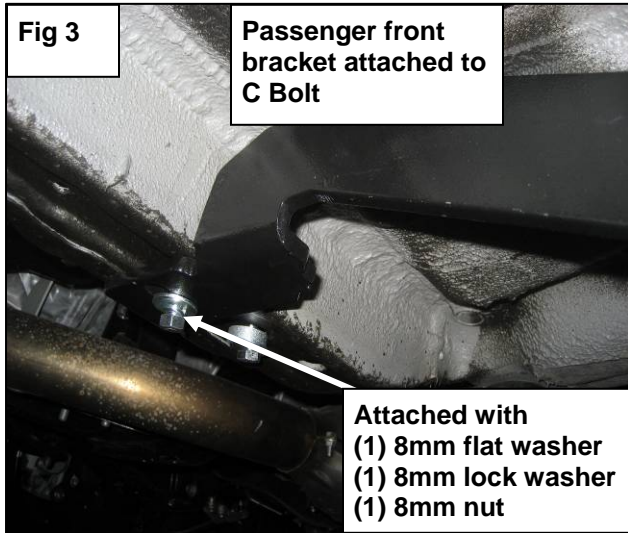
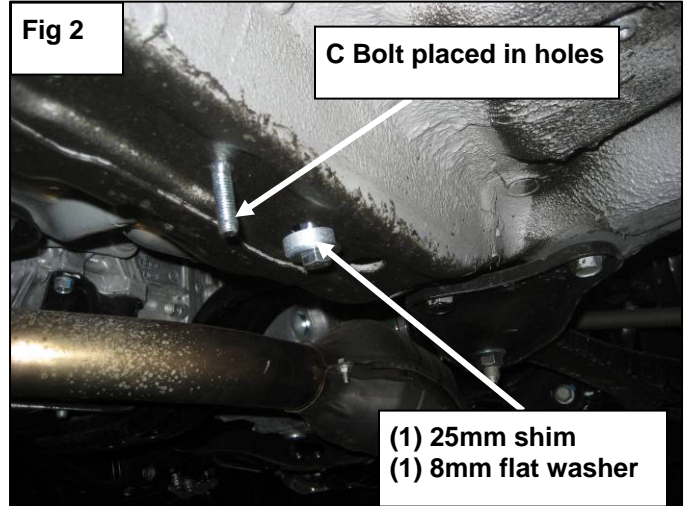
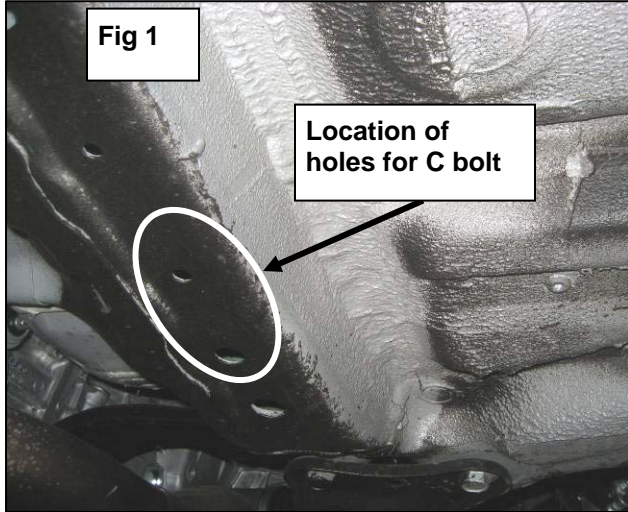
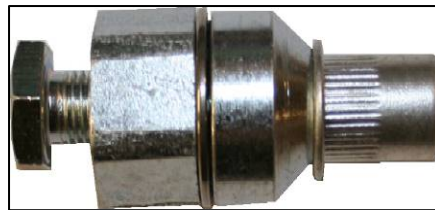


Fig 4A



Rive nut tool assembled
(Example shown with rive nut installed)
(1) 8mm X 50mm hex bolt
(1) 8mm thrust bearing
(1) 8mm end cap
(1) 8mm rive nut

Fig 4B

Rive nut tool procedure
(outside of hole)

DO NOT COLLASPE
RIVENUT OUTSIDE OF HOLE
THIS VIEW BELOW IS ONLY
TO SHOW PROCEEDURE
OUTSIDE OF HOLE

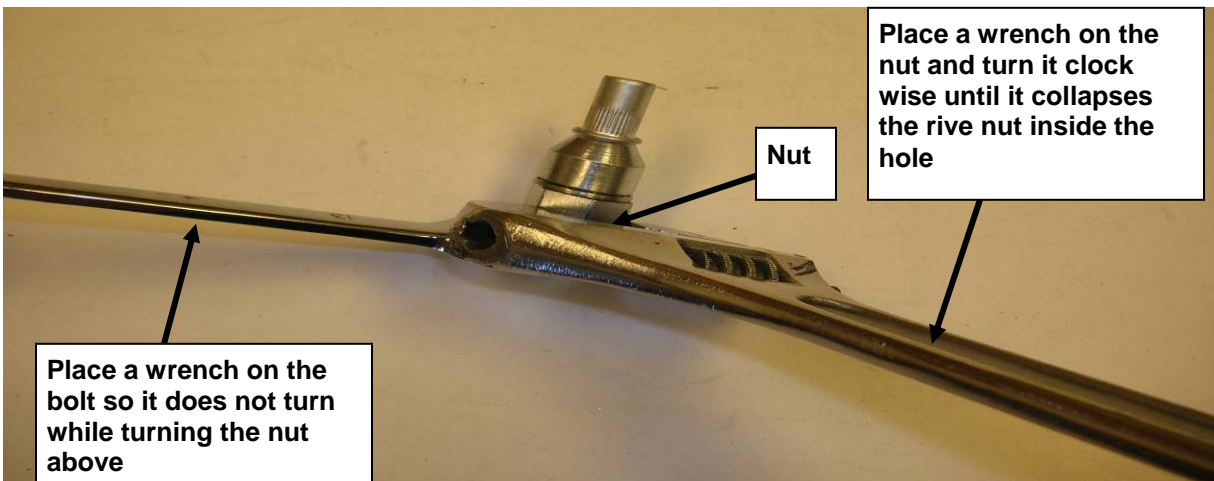
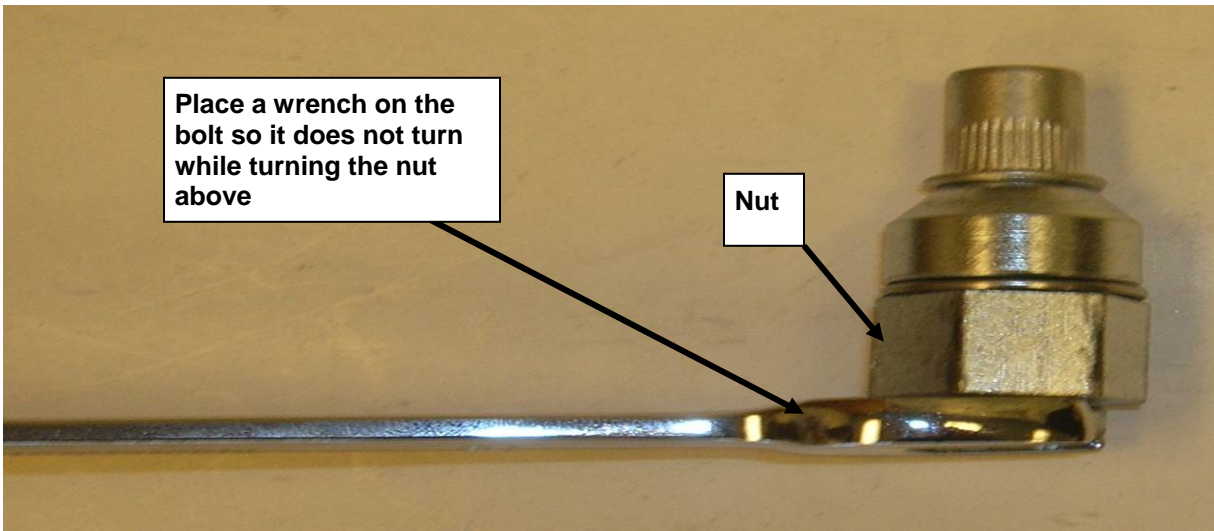
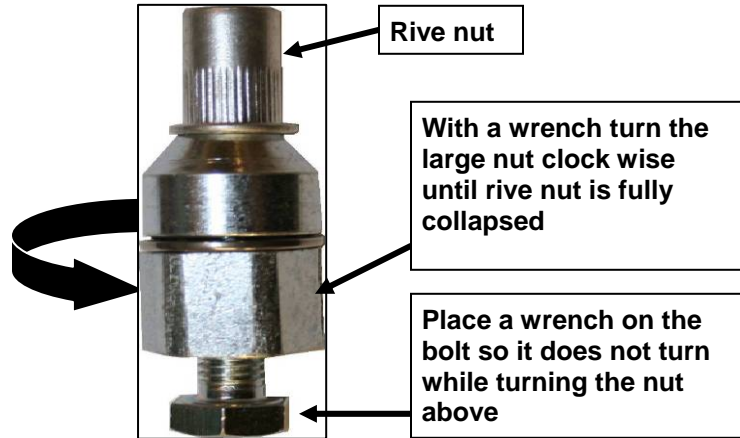
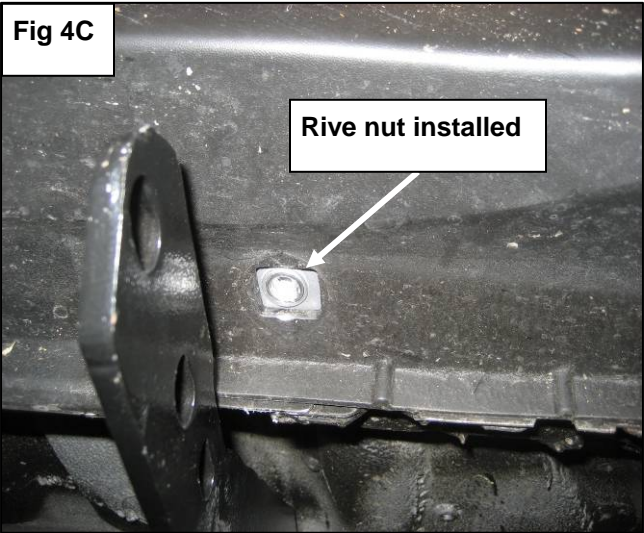
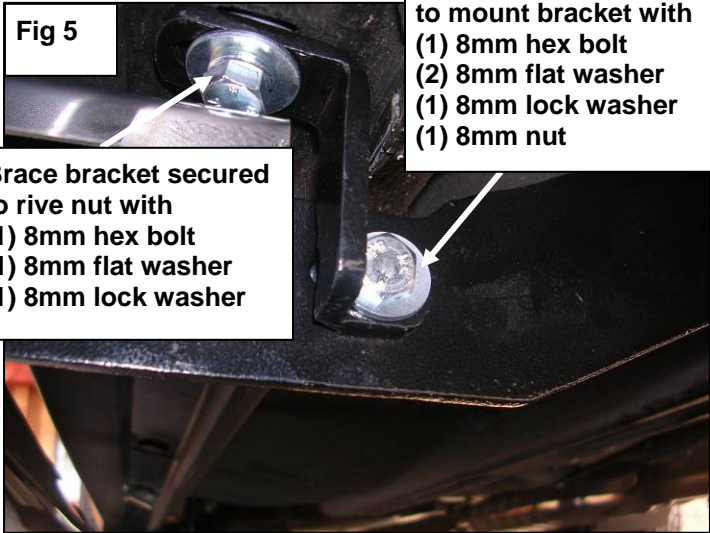


Fig 4C



Rive nut installed

Fig 5



**Brace bracket secured to rive nut with
(1) 8mm hex bolt
(1) 8mm flat washer
(1) 8mm lock washer**

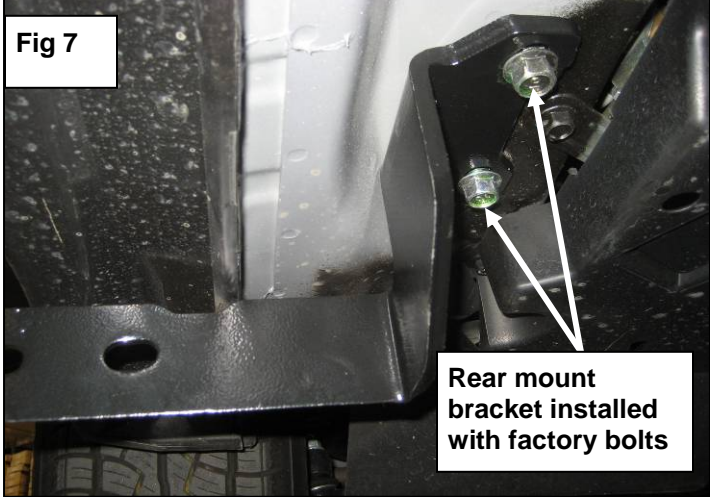
**Brace bracket secured to mount bracket with
(1) 8mm hex bolt
(2) 8mm flat washer
(1) 8mm lock washer
(1) 8mm nut**

Fig 6



Remove tow strap

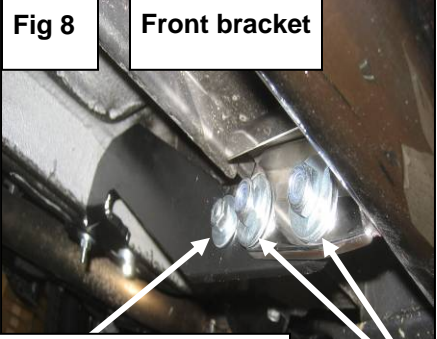
Fig 7



Rear mount bracket installed with factory bolts

Fig 8

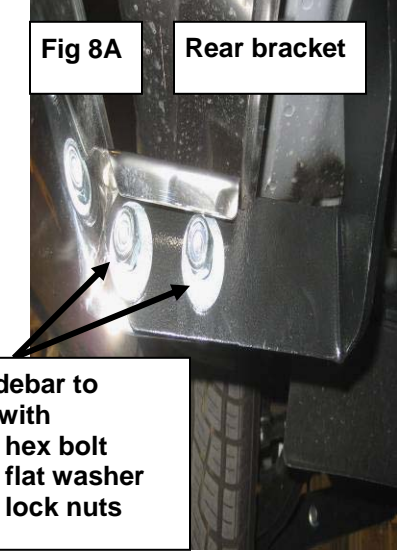
Front bracket



**Brace bracket secured to mount bracket
(1) 8mm hex bolt
(2) 8mm flat washer
(1) 8mm lock washer
(1) 8mm nut**

Fig 8A

Rear bracket



**Attach sidebar to brackets with
(2) 10mm hex bolt
(4) 10mm flat washer
(2) 10mm lock nuts**

Fig 9



Installation completed