

Parts List

| | |
|----|--|
| 1 | Driver / left side bar |
| 1 | Passenger / right side bar |
| 1 | Driver / left mounting bracket, front (A) |
| 1 | Passenger / right mounting bracket, front (B) |
| 1 | Driver / left mounting bracket, middle (C) |
| 1 | Passenger / right mounting bracket, middle (D) |
| 1 | Driver / left mounting bracket, rear (F) |
| 1 | Passenger / right mounting bracket, rear (E) |
| 2 | Spacer, 25mm x 65mm |
| 4 | Spacer, 25mm x 82mm |
| 2 | Hex head bolt, M10 - 1.50 x 100mm |
| 4 | Hex head bolt, M10 - 1.50 x 120mm |
| 6 | Clip nut, M10 |
| 24 | Hex head bolt, M10 - 1.50 x 30mm |
| 12 | Flat washer, M10 x 25mm x 2mm |
| 18 | Flat washer, M10 x 30mm x 2.5mm |
| 30 | Lock washer, M10 |

Torque Specifications

| METRIC | | |
|------------|--|-------------|
| M6 bolt | | 3 ft.-lbs. |
| M8 bolt | | 7 ft.-lbs. |
| M10 bolt | | 16 ft.-lbs. |
| M12 bolt | | 28 ft.-lbs. |
| SAE | | |
| 1/4" bolt | | 3 ft.-lbs. |
| 5/16" bolt | | 7 ft.-lbs. |
| 3/8" bolt | | 16 ft.-lbs. |
| 7/16" bolt | | 20 ft.-lbs. |
| 1/2" bolt | | 28 ft.-lbs. |

Level of Difficulty

Easy

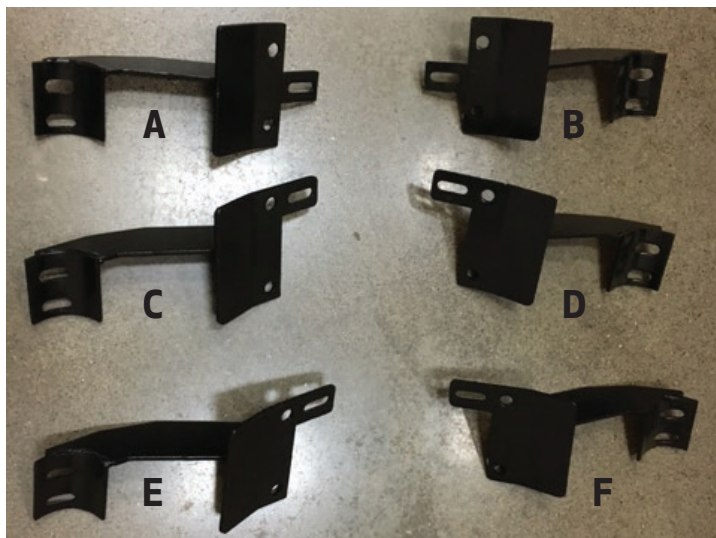


Scan for helpful install tips

Product Image



Brackets and Hardware



Notes and Maintenance

Before you begin installation, read all instructions thoroughly.

Proper tools will improve the quality of installation and reduce the time required.

To protect the product, wax after installing. Regular waxing is recommended to add a protective layer over the finish. Do not use any type of polish or wax that may contain abrasives that could damage the finish.

For gloss black finishes, mild soap may be used to clean the product.

Refer to the table to the left when securing hardware during the installation process to help prevent damage to the product or vehicle.

PROCEDURE:

1. REMOVE CONTENTS FROM BOX. VERIFY ALL PARTS ARE PRESENT. READ INSTRUCTIONS CAREFULLY BEFORE STARTING INSTALLATION.
2. From underside of vehicle, locate the two front factory holes on the driver side floor panel located by the front tire. With the threaded nut facing up, insert (1) 10mm Clip Nut through larger hole. Orient Clip Nut to engage in the smaller hole (Figure 1).
3. Partially hang driver front Mounting Bracket to pinch weld using (2) M10 x 30mm Hex Head Bolts, (2) M10 Hex Nuts, (2) M10 Lock Washers, and (4) 10mm x 30mm x 2.5mm Flat Washers (Figure 3).
4. Place (1) 25mm x 65mm (smaller) Tube Spacer between the tab on the Mounting Bracket and the already installed Clip Nut. Insert (1) M10 x 100mm Hex Head Bolt through tab on the Mounting Bracket and Tube Spacer and to Clip Nut (Figure 4). Do not tighten at this time.
5. Repeat steps 2 - 4 for driver center and driver rear Mounting Brackets. Depending upon your vehicle, the center factory hole might be too small for the Clip Nut, file the Clip Nut until you are able to mount it. NOTE: You will be using 25mm x 82mm (larger) Tube Spacers with M10 x 120mm Hex Head Bolts on the center and rear Mounting Brackets. IMPORTANT! Install the rear mounting Brackets depending upon your vehicle.

7-08 Explorer Sport Trac: You will need to swap the rear Mounting Brackets. The passenger rear Mounting Bracket will mount on the driver rear, and the driver rear Mounting Bracket will mount on the passenger rear. The front and center cradles on both sides should be facing the rear of the vehicle and the rear cradles on both sides should be facing the front of the vehicle. Rear Mounting Brackets will mount with (1) M10 x 30mm Hex Head Bolt (Figure 5).

6. Once all three Mounting Brackets are partially mounted, carefully position driver Sidebar onto Mounting Brackets. Attach Sidebar to Mounting Brackets using (6) M10 x 30mm Hex Head Bolts, (6) M10 Lock Washers, and (6) 10mm x 25mm x 2mm Flat Washers (Figure 6). Do not tighten at this time.
7. Level and adjust Sidebar; then tighten all hardware at this time.
8. Do periodic inspections to the installation to make sure all hardware is secure and tight.

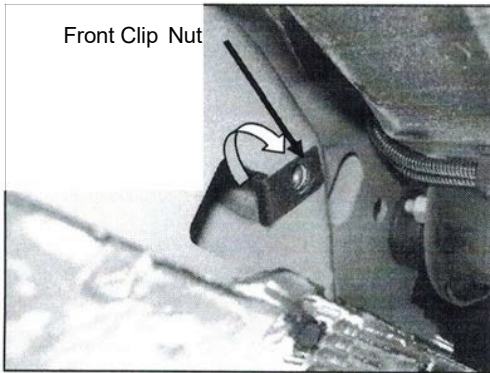


Figure 1

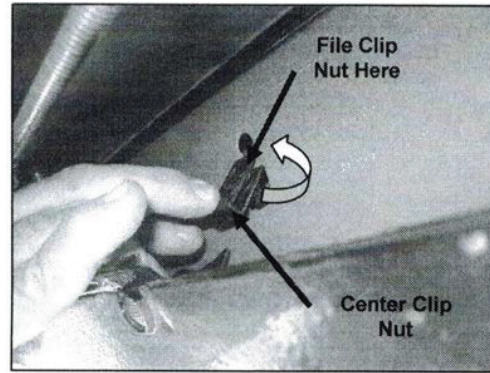


Figure2

Driver Side Front Mounting Bracket Shown

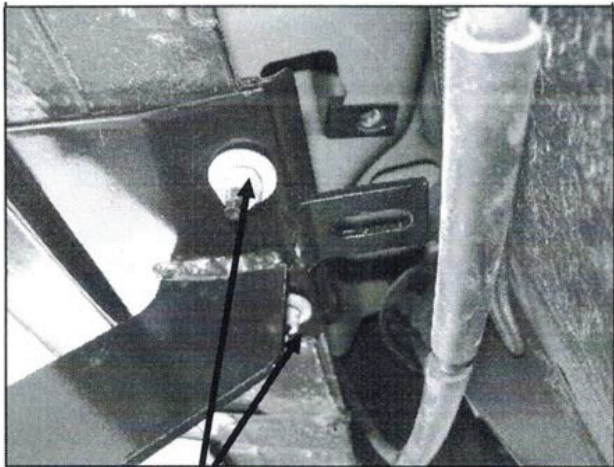


Figure 3

- 10mm x 30mm Hex Head Bolts
- 10mm Flat Washers
- 10mm Lock Washers
- 10mm Hex Nuts

Driver Side Front Mounting Bracket Shown

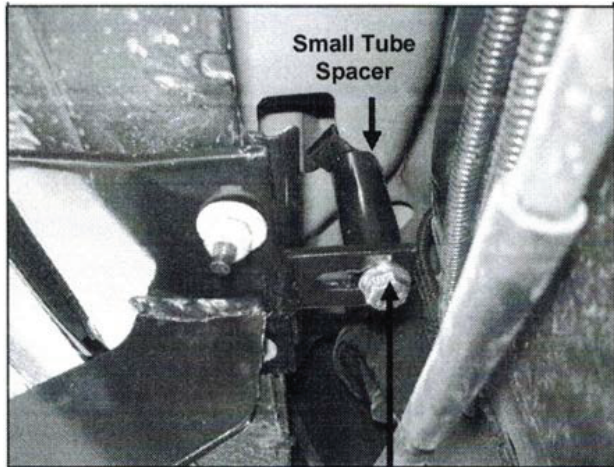


Figure 4

- (10mm Clip Nut)
- 10mm x 100mm Hex Head Bolt
- 10mm Lock Washer
- 10mm Flat Washer

- 8mm x 30mm Hex Head Bolts
- 8mm Flat Washers
- 8mm Lock Washers

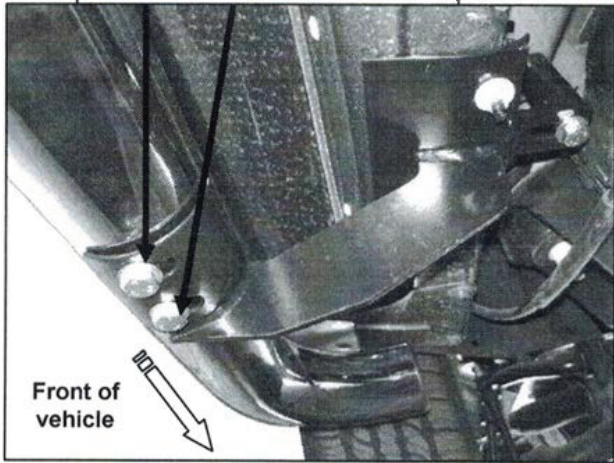


Figure 6

Rear Mounting Brackets mount with cradles facing the front of the vehicle and with one 10mm x 30mm hex bolt

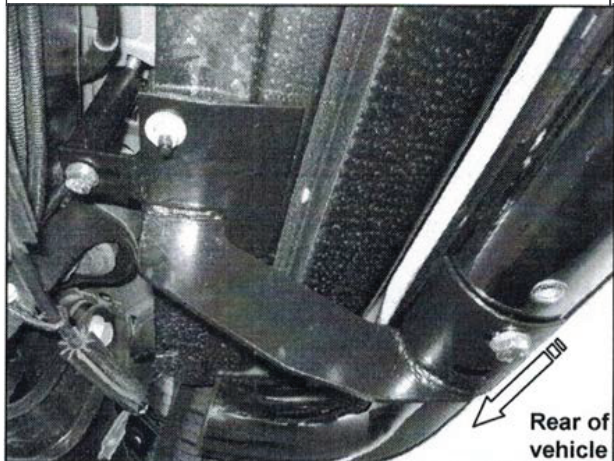


Figure 5

Installation Complete

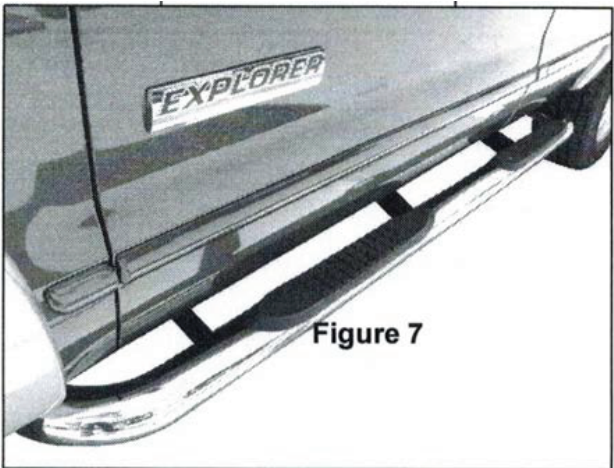


Figure 7