



INSTALLATION MANUAL

203031-2

Parts List

1	Driver / left side bar
1	Passenger / right side bar
1	Driver / left mounting bracket, front
1	Passenger / right mounting bracket, front
1	Driver / left mounting bracket, rear
1	Passenger / right mounting bracket, rear
1	Driver / left support bracket, front
1	Passenger / right support bracket, front
2	Hex bolt, M8 - 1.25mm x 25mm
2	Flat washer, M8 x 25mm x 2mm
2	Lock washer, M8
2	Double nut plate, M10
2	Thick square washer, M10 ID x (35mm x 35mm) OD x 5mm
2	Bolt plate, M10 - 1.50mm x 40mm
12	Hex bolt, M10 - 1.50mm x 30mm
4	Hex bolt, M10 - 1.50mm x 45mm
10	Flat washer, M10 x 25mm x 2mm
10	Flat washer, M10 x 30mm x 2.5mm
12	Lock washer, M10
2	Hex nut, M10
2	Nylock nut, M10
2	Double nut plate, M10

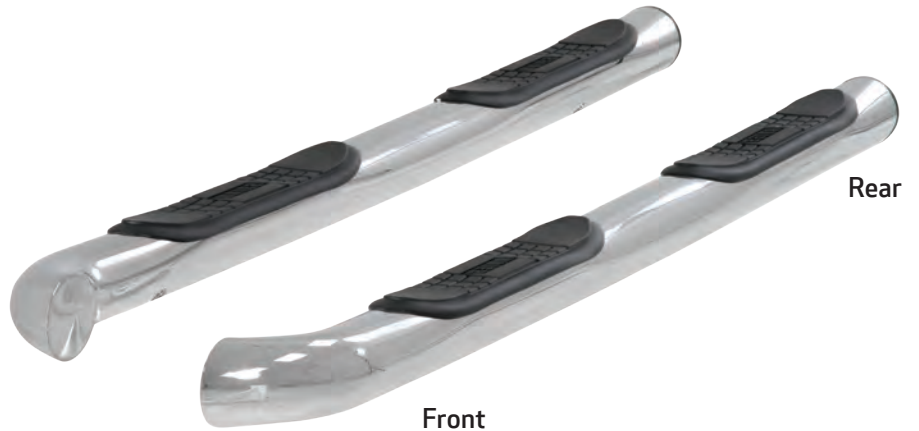
Level of Difficulty

Easy

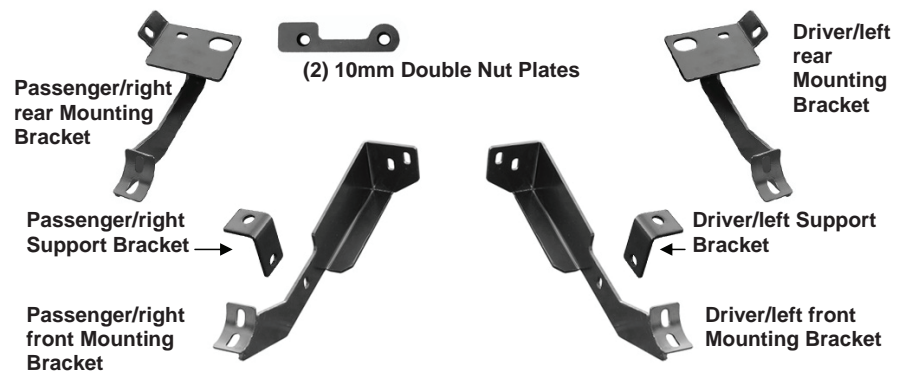


Scan for helpful install tips

Product Image



Brackets and Hardware



Torque Specifications

METRIC	M6 bolt	3 ft.-lbs.
	M8 bolt	7 ft.-lbs.
	M10 bolt	16 ft.-lbs.
	M12 bolt	28 ft.-lbs.
SAE	1/4" bolt	3 ft.-lbs.
	5/16" bolt	7 ft.-lbs.
	3/8" bolt	16 ft.-lbs.
	7/16" bolt	20 ft.-lbs.
	1/2" bolt	28 ft.-lbs.

Notes and Maintenance

Before you begin installation, read all instructions thoroughly.

Proper tools will improve the quality of installation and reduce the time required.

For stainless steel and aluminum, polish may be used to clear small scratches and scuffs on the finish. Mild soap may be used also to clean the product.

Refer to the table to the left when securing hardware during the installation process to help prevent damage to the product or vehicle.

PROCEDURE:

1. Starting the installation at the driver side-left front, remove the sheet metal screw in the rear of the front fender. Next, remove the three plastic clips from under the front of the plastic rocker trim panel, **(Figure 1)**. Once these are removed, gently pull the plastic panel toward the outside to locate the factory hole in the body panel, **(Figure 2)**. **NOTE:** Hold the front Mounting Bracket up in position to determine the approximate location of the correct mounting hole.
2. Mark the location of the factory hole onto the plastic rocker panel. Using a 7/16" drill bit, carefully drill through the marked location on the plastic panel, **(Figure 3)**. **IMPORTANT:** Only drill through the plastic panel. Take precautions to avoid damage to the vehicle.
3. Gently pull the cover aside to insert (1) M10 x 35mm Bolt Plate with (1) 10mm Plastic Retainer into the factory hole in the body panel. Once the Bolt Plate is in place, thread the Plastic Retainer down until it is flush against the body panel. Carefully reposition the plastic rocker panel over the Bolt Plate and into the original position, **(Figure 4)**. Secure with factory clips and metal screw.
4. Locate the three factory bolts on the side of the frame rail. Remove the two lower bolts only. Position the driver side front Mounting Bracket up to the frame rail. Line up the holes in the Mounting Bracket with (2) threaded holes. Secure the Mounting Bracket with the (2) factory bolts, **(Figure 5)**. Snug but do not tighten hardware at this time.
5. Place the Support Bracket onto the previously installed Bolt Plate using (1) 10mm Flat Washer, (1) M10 Lock Washer and (1) M10 Hex Nut. Attach the opposite end of the Support Bracket to the back of the Mounting Bracket with (1) M10 x 30mm Hex Bolt, (2) 10mm Flat Washers and (1) M10 Nylon Lock Nut, **(Figure 6)**. **NOTE:** Shorter tab on the Support Bracket mounts to the rocker panel, longer end to the Mounting Bracket. Do not tighten hardware at this time.
6. Moving to the rear of vehicle, locate the three holes in the floor panel next to the pinch weld. Remove the factory rubber plug if equipped, **(08 Escape only)**, facing the rear of the vehicle, **(Figure 7)**.
7. Insert (1) Double Nut Plate through the large round hole and line up the threaded nuts on the nut plate with the smaller round and oval holes, **(Figure 8)**. **NOTE:** Nut Plate must be flat against the inside of the body panel with the Welded nuts on top.
8. Position the driver side rear Mounting Bracket up to the vehicle. Insert (1) M10 x 45mm Hex Bolt with (1) 10mm Flat Washer and (1) M10 Lock Washer through the Mounting Bracket, small round hole and into the Double Nut Plate. Insert (1) M10 x 45mm Hex Head Bolt, (1) 10mm Square Washer and (1) M10 Lock Washer through the Mounting Bracket, large oval hole and into remaining nut in the Double Nut Plate, **(Figure 9)**. Do not tighten at this time.

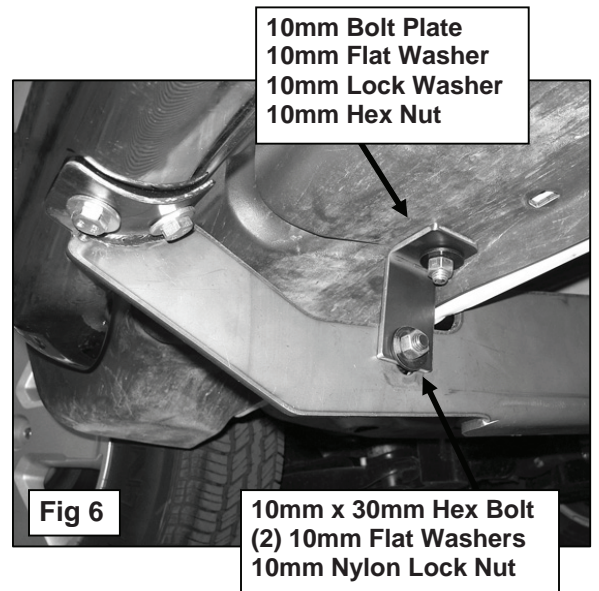
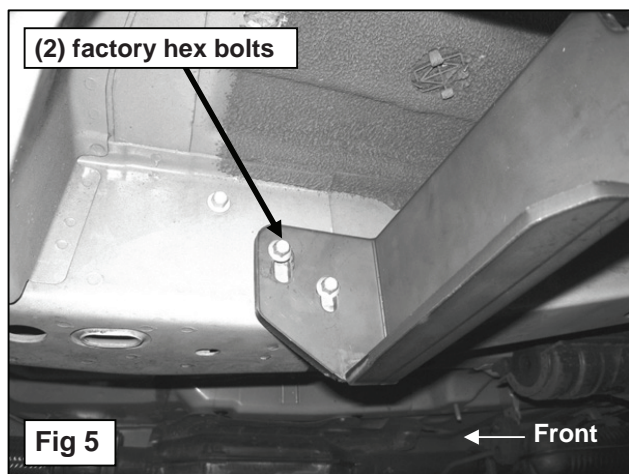
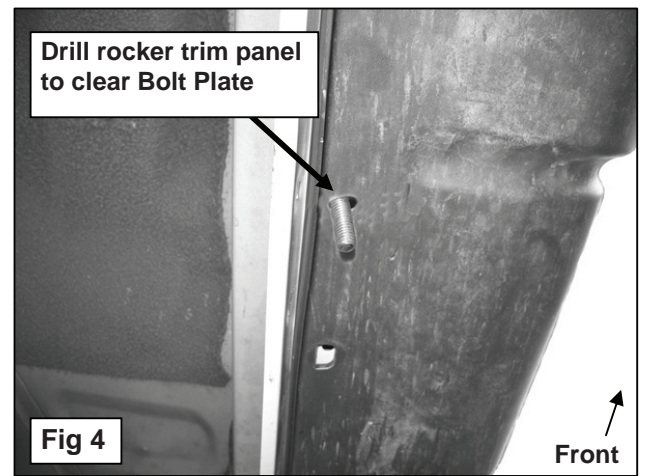
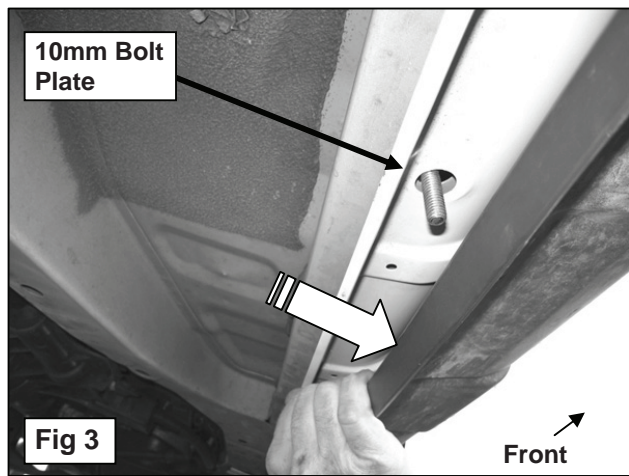
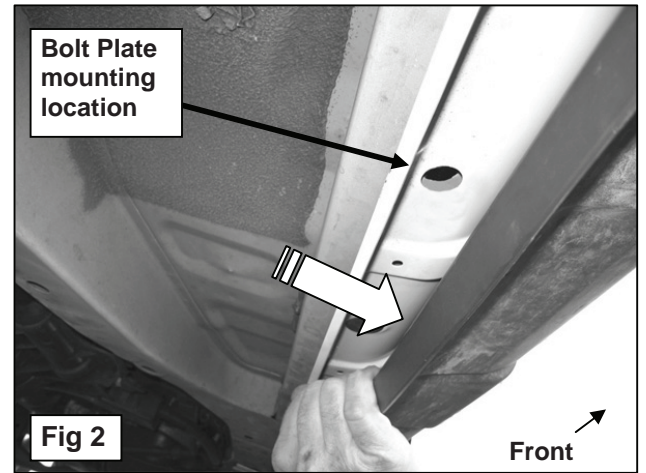
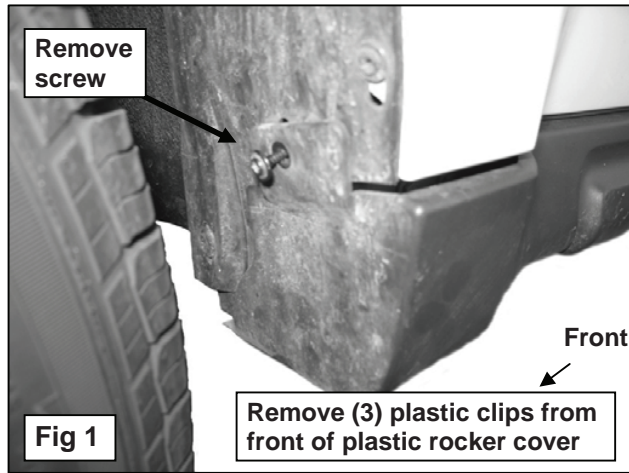
Note for 2008 Escape driver side rear Mounting Bracket installation only: Use (1) M8 x 25mm Hex Head Bolt, (1) 8mm Flat Washer, and (1) M8 Lock Washer to attach the driver side Mounting Bracket to previously removed rubber plug location. You will not be using this 8mm bolt on the driver side of the Mazda Tribute or 09 Escape.

9. Carefully position the driver Sidebar onto the Mounting Brackets and secure using (4) M10 x 30mm Hex Head Bolts, (4) 10mm Flat Washers and (4) M10 Lock Washers, **(Figure 11)**. Snug but do not tighten hardware at this time.
10. Adjust and level the Sidebar and tighten all hardware at this time.
11. Repeat Steps 2-11 for passenger/right Sidebar.

NOTE: On 2009-010 Escape and Tribute models, the passenger side rear Mounting Bracket installs between the factory exhaust support and the body panel. Remove the (2) hex bolts securing the bracket, move the exhaust support slightly and install the passenger side Mounting Bracket as per Step 9, **(see Figure 10)**. Reinstall the exhaust support using the (2) factory hex bolts with (1) inserted through the exhaust support and the Mounting Bracket.

12. Do periodic inspections to the installation to make sure that all hardware is secure and tight.

Driver Front Mounting Bracket Installation Pictured



Driver Rear Mounting Bracket Installation Pictured

Remove rubber plug (08 Escape models only)

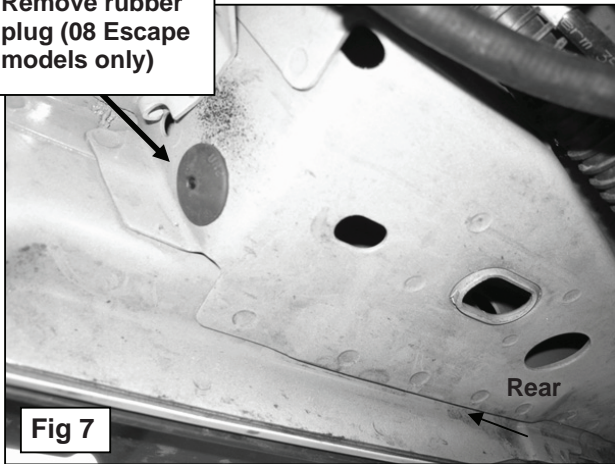


Fig 7

Insert Double Nut Plate and line up with (2) holes

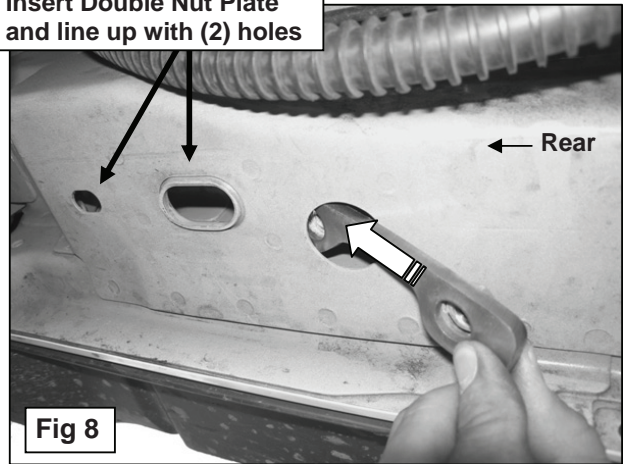


Fig 8

Driver side 08 Escape Only
8mm x 25mm Hex Head Bolt
8mm Lock Washer
8mm Flat Washer

10mm x 45mm Hex Bolt
10mm Lock Washer
10mm Square Washer

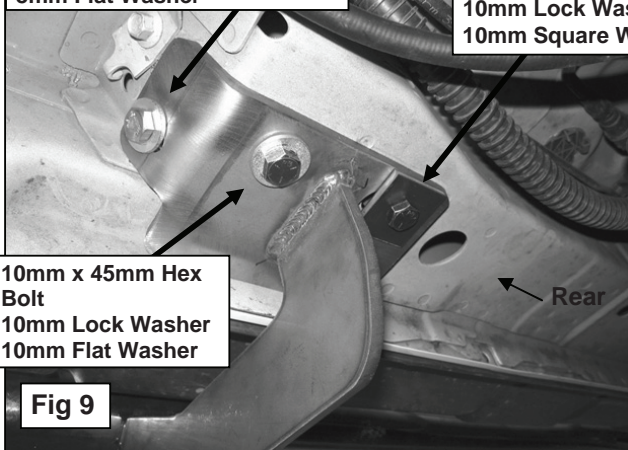


Fig 9

09-010 models-Install passenger side rear Mounting Bracket between exhaust support and body panel. Secure with factory hex bolts

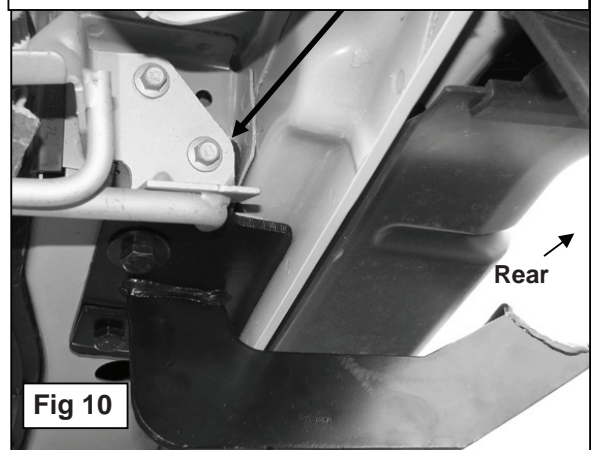


Fig 10

M10 x 30mm Hex Head Bolts
10mm Flat Washers
M10 Lock Washers

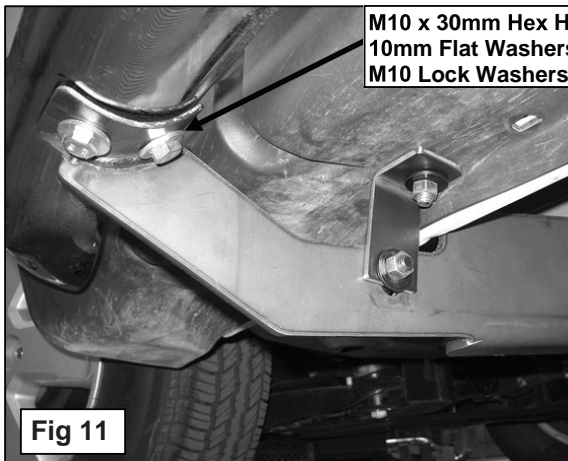


Fig 11



Complete Installation