

INSTALLATION INSTRUCTIONS

3" BULL BAR
2011 FORD EXPLORER
B35-3013 / 35-3013

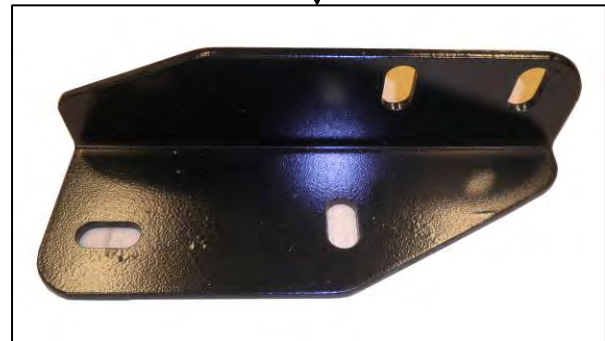
PARTS LIST:

1	Bull Bar	12	12mm ID x 37mm OD Flat Washers
1	Driver/Left Frame Bracket	2	12mm x 45mm Hex Head Bolts
1	Passenger/Right Frame Bracket	2	12mm Nut & bolt plate
4	12mm x 30mm Hex Head Bolts	1	5mm x 25mm Hex bolt
8	12mm Lock Washers	2	5mm Flat washers
6	12mm Hex Nuts	1	5mm Lock nut
2	50mm x 90mm x 10mm Spacer plate		

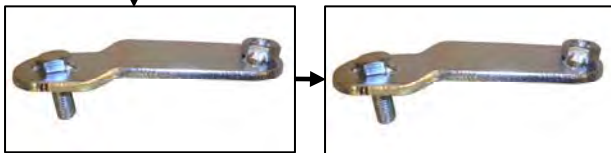
Passenger Side Frame Bracket



Driver Side Frame Bracket



12mm Nut & Bolt plates



50mm x 90mm x 10mm
Spacer plates



PROCEDURE:

1. REMOVE CONTENTS FROM BOX. VERIFY ALL PARTS ARE PRESENT. READ INSTRUCTIONS CAREFULLY BEFORE STARTING INSTALLATION.
2. **NOTE:** It may be necessary to remove/relocate front license plate and license plate bracket. It is not required, but strongly recommended. If local Prov. / State law requires a license plate, license plate relocation kit is available Part # 35-0000.

3. Located just under the front end of the vehicle, starting with the driver side, Insert (1) 12mm Nut & bolt plate into the large oval opening in the bottom of the frame rail, nut first and slide it forward as seen in **(Fig 1)**. Line up the threaded hole in the Nut Plate with the factory hole at the front of the frame as seen in **(Fig 2)**
4. Next select the driver side frame mounting bracket. Holding the mount bracket up & into position against the bottom of the frame place it over the bolt and secure to the bolt & nut Plate, with (1) 12mm Flat Washer, (1) 12mm Lock Washer and (1) 12mm Hex Nut. Leave hardware loose at this time. Slide (1) Spacer Plate between the frame channel and the Bracket, **(Fig 3) shows spacer in place with out bracket for position of view**. Insert (1) 12mm x 45mm Hex Bolt, (1) 12mm Lock Washer and (1) 12mm Flat Washer through the hole in the Bracket, Spacer Plate and into the Nut Plate, **(Fig 3A)**. Shows bracket attached snug but do not tighten hardware at this time.
5. Move to the passenger side of the vehicle. Determine if the vehicle is equipped with the factory installed fresh air inlet in the plastic bumper cover. **Vehicles without air inlet:** Repeat **Steps 3 & 3A** for passenger side Frame Mounting Bracket installation.
6. **Vehicles equipped with air inlet**, as seen in **(Fig 4)**: Repeat **Step 3** to install the 12mm nut & bolt plate; hold the Frame Bracket in the approximate position over the Bolt and Nut Plate. Mark the outline of the Bracket onto the mounting tab on the plastic air inlet, (scoop), **(Fig 5)**. Remove the inlet and place it on a clean, stable work surface. Use a hacksaw to cut the required material from the mounting area on the inlet. Check the fit often and trim material away as necessary. Do not cut off the mounting tab of the scoop. Carefully pry off the metal clip and move it as indicated in **(Fig 5)** or drill a 1/4" hole through the top and bottom of the scoop and replace the clip with the included (1) 5mm x 25mm Hex bolt, (2) 5mm Flat washers and (1) 5mm Lock nut. Do not over-tighten 5mm hardware. **IMPORTANT!** Any cutting tool may break or shatter. Government regulations require safety glasses & equipment at all times when cutting. Install the mount bracket as described in **Step 4**. **NOTE:** Snug all hardware to the Bull Bar installation before reinstalling the plastic air inlet scoop.

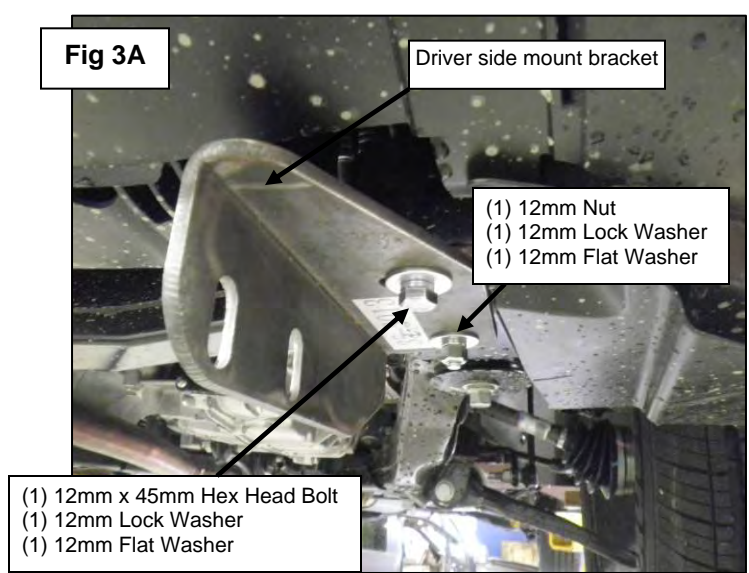
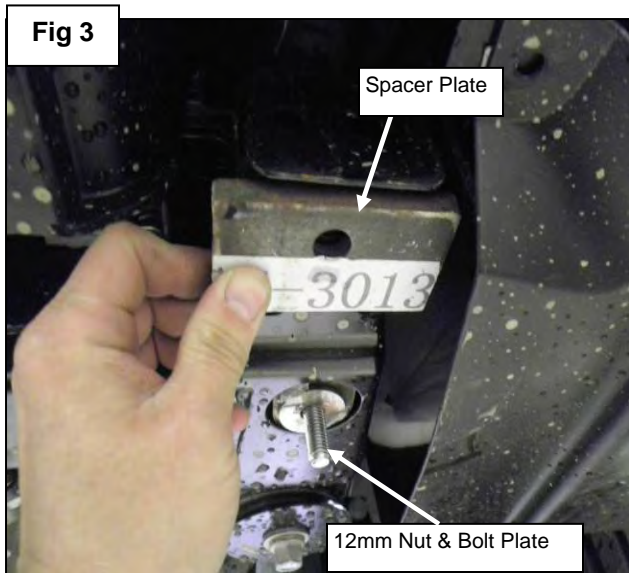
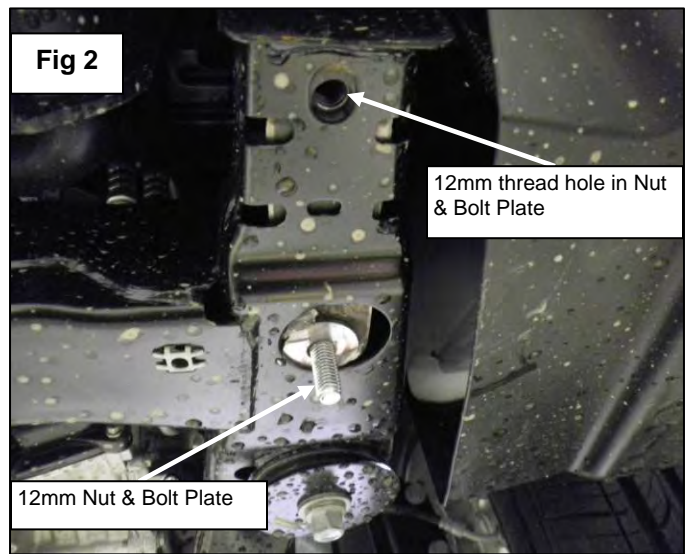
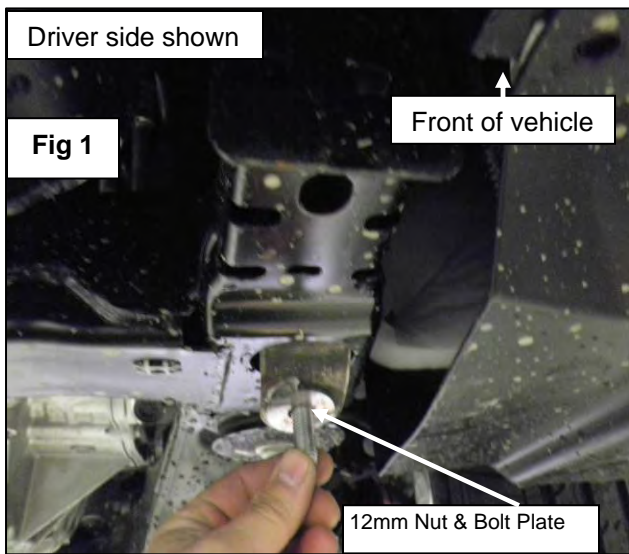
NOTE: Before proceeding, it may be considerably easier to remove the plastic trim on the lower bumper cover to cut the slots for the Bull Bar. However, on some models, the trim may be held in place on the ends with factory rivets making removal and reinstallation extremely difficult and best done by a professional, Determine if the trim is held in place with rivets, (visible from the outside-below the fog lights), before attempting to remove the trim from bumper cover. **(Fig 4)** shows rivets.

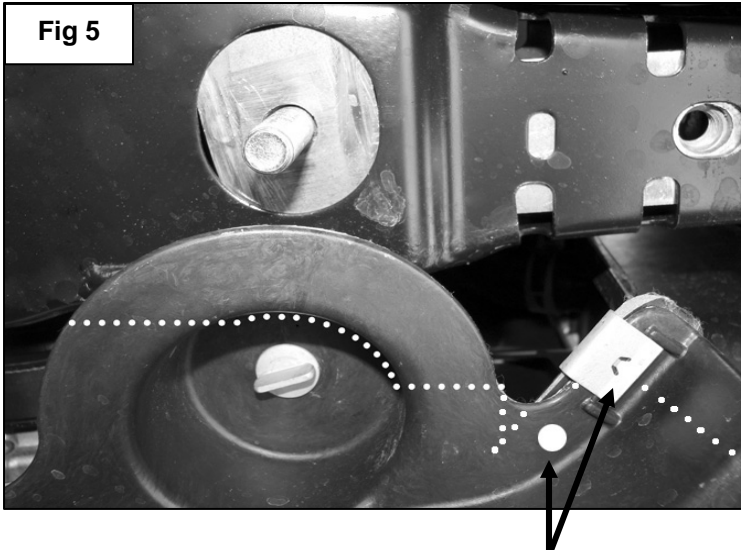
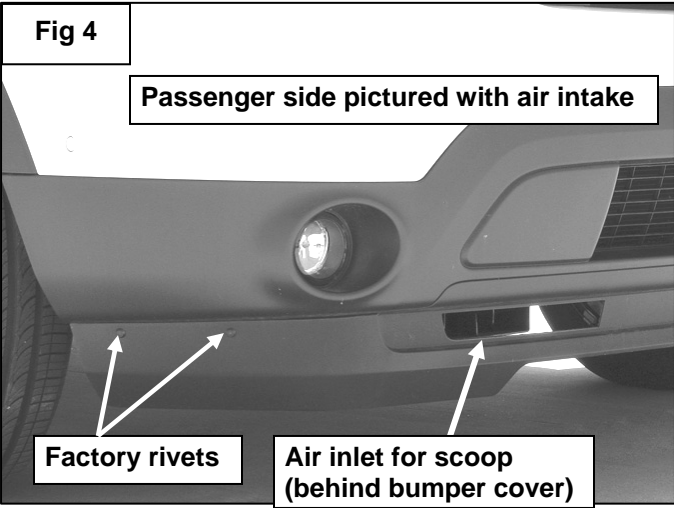
7. Use the location of the previously installed Frame Mounting Bracket to determine where to draw the top and bottom horizontal lines, **(Fig 6)**. Carefully cut this area out of the trim panel with a sharp knife or hacksaw, **(Fig 6)**. **IMPORTANT:** Do not cut through the top or bottom edge of the bumper cover. Only remove enough material to clear the mounting tabs on the Bull Bar.
8. With assistance, position the Bull Bar onto the inside of the Mounting Brackets. Attach the Bull Bar to the Mounting Brackets with (4) 12mm x 35mm Hex Bolts, (8) 12mm Flat Washers, (4) 12mm Lock Washers and (4) 12mm Hex Nuts, **(Fig 7)**. Do not tighten at this time.
9. Reinstall the air inlet, (scoop), removed in **Step 4**. Trim scoop to clear Brackets as necessary.
10. Level and adjust Bull Bar, then tighten all hardware at this time.
11. Do periodic inspections to the installation to make sure that all hardware is secure and tight.

To protect your investment, wax this product after installing. Regular waxing is recommended to add a protective layer over the finish. Do not use any type of polish or wax that may contain abrasives that could damage the finish.

For stainless steel: Aluminum polish may be used to polish small scratches and scuffs on the finish. Mild soap may be used also to clean the Product.

For gloss black finishes: Mild soap may be used to clean the Product.





Illustrations, diagrams and measurements provided for example only. It is the installer's responsibility to determine exact cuts/modifications to the vehicle required for proper installation.

Move metal clip to here (See Dot) after cutting OR drill a 1/4" hole and replace the clip with the included:

- (1) 5mm x 25mm Screw
- (2) 5mm Flat Washers
- (1) 5mm Nylon Lock Nut

