



---

## INSTALLATION INSTRUCTIONS

GRILL/ BRUSH GAURD PART #5046/ 5046-2  
2003-05 DODGE RAM P/U 2500/3500 2/4WD

### **PARTS LIST**

- |                             |                          |
|-----------------------------|--------------------------|
| (1) FRONT BAR               | (14) 7/16" HEX LOCK NUTS |
| (2) FRAME MOUNT BRACKETS    | (28) 7/16" FLAT WASHERS  |
| (14) 7/16" x 1 ½" HEX BOLTS |                          |

### **PROCEDURE**

1. Remove factory tow hooks from front of truck to expose vehicle bumper brackets.  
**Note:** If vehicle does not have tow hooks, locate and remove the (2) plastic push rivets that secure plastic panels on either side of front bumper mouth (see Figure 1.1). Remove plastic panels to expose vehicle bumper brackets.
2. Attach driver-side Frame Mount Bracket to driver-side vehicle bumper bracket using (4) 7/16" x 1 ½" hex bolts, (8) 7/16" flat washers, and (4) 7/16" hex lock nuts (see Figure 1.2). Hand tighten.
3. Repeat for passenger-side of vehicle using passenger-side Frame Mount Bracket.
4. Line up the 3 holes on the lower portion of the Front Bar with the 3 holes on each of the Frame Mount Brackets (see Figure 1.2) and attach using (3) 7/16" x 1 ½" hex bolts, (6) 7/16" flat washers, and (3) 7/16" hex lock nuts for each side. Hand tighten.
5. Align the left and right side of the Front Bar to the vehicle bumper, and when satisfied that the Bar is centered, tighten the (6) bolts supporting the Front Bar. The (8) Frame Mount Bracket bolts may now be tightened to complete installation.

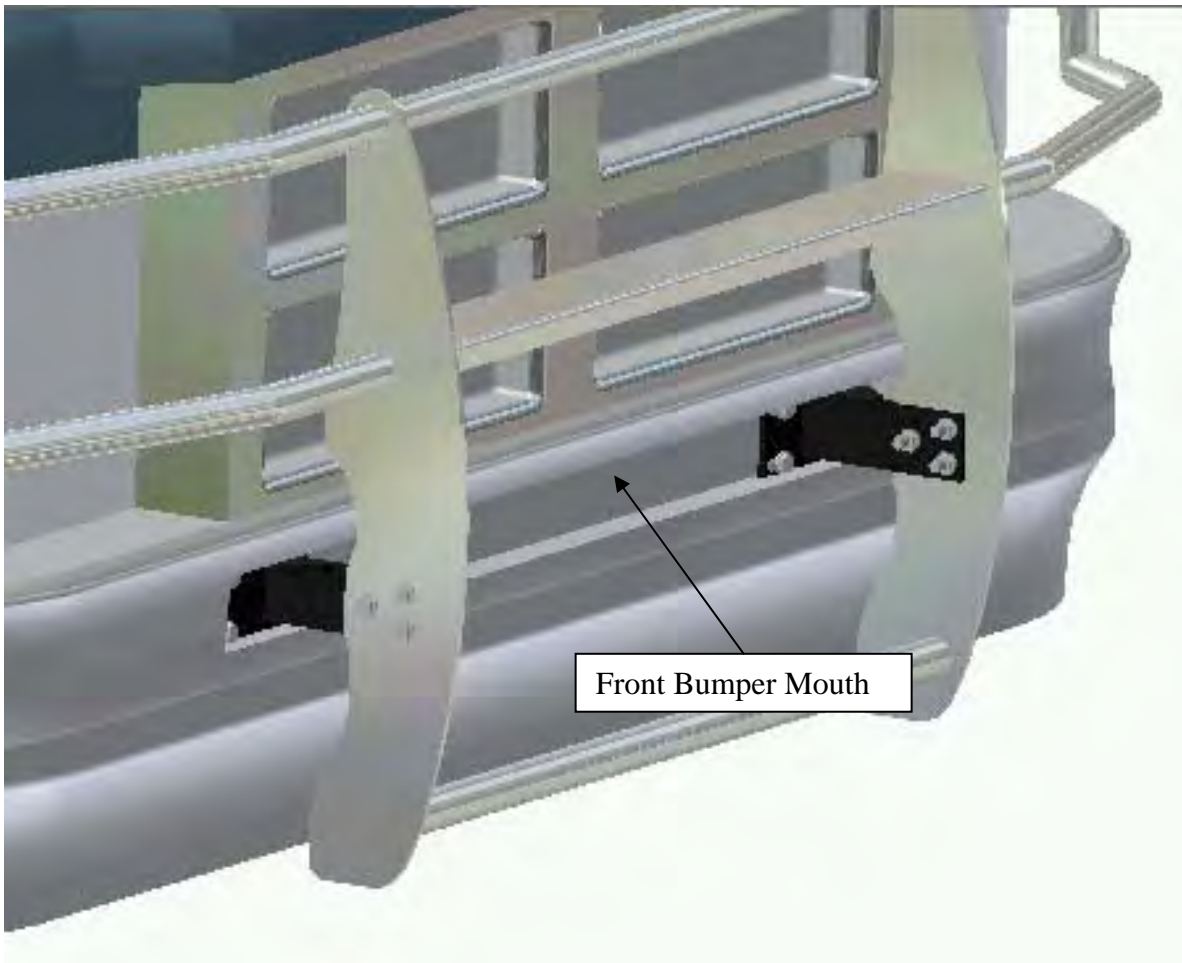


Figure 1.1 – Fully Assembled Grill Guard

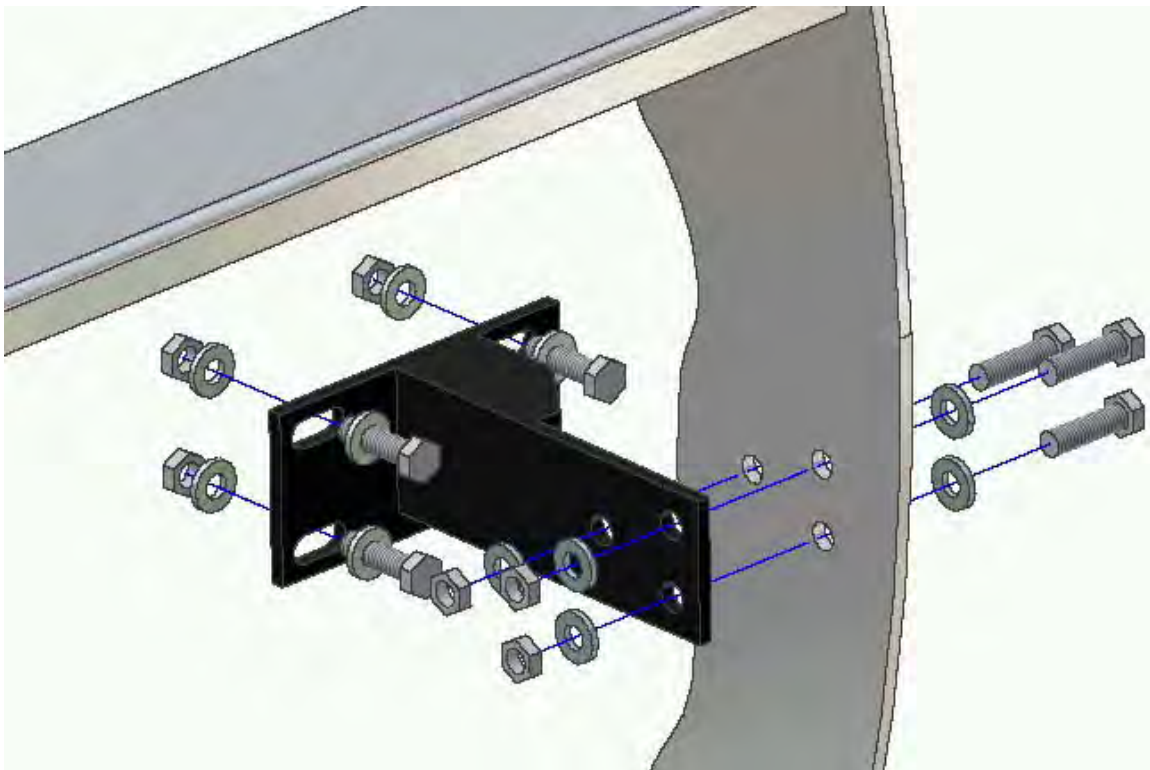


Figure 1.2 – Driver-Side Mount Bracket