

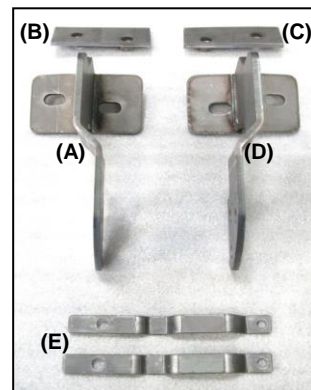


INSTALLATION INSTRUCTIONS

GRILLE GUARD PART #5051-2/5051

PARTS LIST:

1	Grille Guard	6	12mm Nylock Nuts
1	Passenger Side Mounting Bracket (A)	12	12mm Flat Washers
1	Driver Side Mounting Bracket (D)	2	3/8" x 1" Self Tapping Bolts
1	Passenger Side Double Nut Plate (B)	2	8-1.50mm x 25mm Button Head Bolts
1	Driver Side Double Nut Plate (C)	4	10-1.50mm x 35mm Hex Head Bolts
2	Top Brackets (E)	2	8mm Nylock Nuts
6	12-1.75mm x 30mm Hex Head Bolts	4	10mm Flat Washers
4	8mm Flat Washers	4	10mm Lock Washers



PROCEDURE:

1. REMOVE CONTENTS FROM BOX. VERIFY ALL PARTS ARE PRESENT. READ INSTRUCTIONS CAREFULLY BEFORE STARTING INSTALLATION.
2. From underside of vehicle, remove the passenger side rubber shroud located by the bumper air inlet (Figure 1).
3. Through bumper air inlet, insert passenger side Double Nut Plate through existing hole on the radiator support (Figure 2). Center holes on the Double Nut Plate with holes on the radiator support.
4. Hang passenger side Mounting Bracket into position by partially threading (1) 10-1.50mm x 35mm Hex Head Bolt, (1) 10mm Flat Washer, and (1) 10mm Lock Washer on the inner side of the Mounting Bracket and trough already inserted Double Nut Plate. From underside of vehicle proceed to install another Bolt with Washer and Lock Washer on the outer side of the Mounting Bracket and trough Double Nut Plate (Figure 3). Do not tighten at this time.
5. Repeat steps 2-4 for driver side.
6. Open the hood and remove the two existing Phillips plastic fasteners holding the factory grille shell (Figure 4).
7. Place foam tape on top brackets as shown in figure 5. Place Top Brackets onto the existing holes where the plastic fasteners were removed. **NOTE:** Slotted hole on the Top Brackets mounts to the vehicle. In order to mount the driver side Top Bracket, you will need to slide Top Bracket under hood release cable.
8. Use the included (2) 3/8" x 1" Self Tapping Bolts to attach Top Brackets to vehicle (Figure 5).
WARNING! Do not over tighten or pull out might occur.
9. Position Grille Guard on the outer side of Mounting Brackets. Install Grille Guard onto Mounting Brackets using the included (6) 12-1.75mm x 30mm Hex Head Bolts, (6) 12mm Nylock Nuts, and (12) 12mm Flat Washers (Figure 6). Do not tighten at this time.
10. Place opposite side of Top Brackets on top of the Grille Guard's upper tabs and secure them together using the included (2) M8 -1.50mm x 25mm Button Head Bolts, (2) M8 Nylock Nuts, and (2) M8 Flat Washers (Figure 5). Do not tighten at this time.
11. Level and adjust Grille Guard as desired; then tighten all hardware at this time.
12. Do periodic inspections to the installation to make sure that all hardware is secure and tight.

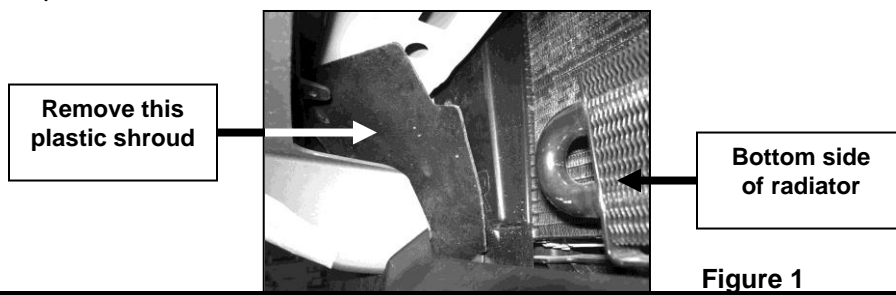


Figure 1

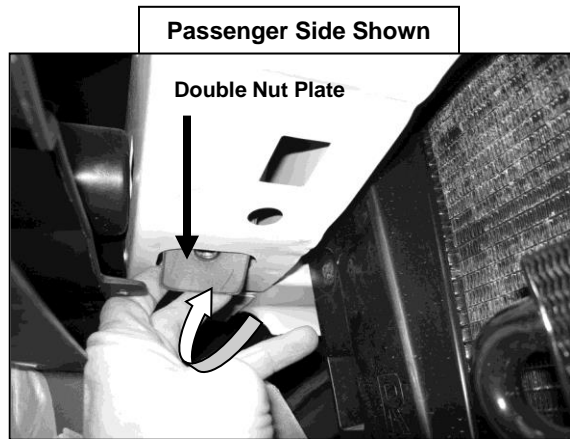


Figure 2

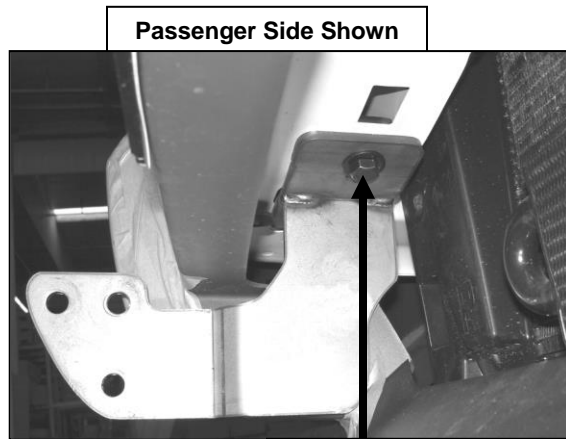


Figure 3

10mm Head Hex Bolt,
10mm Flat Washer, &
10mm Lock Washer

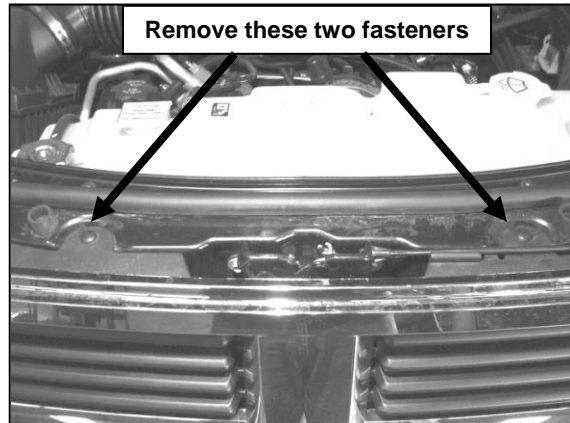


Figure 4

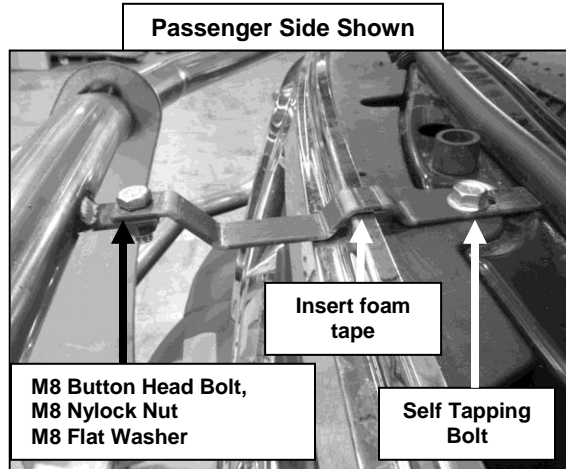


Figure 5

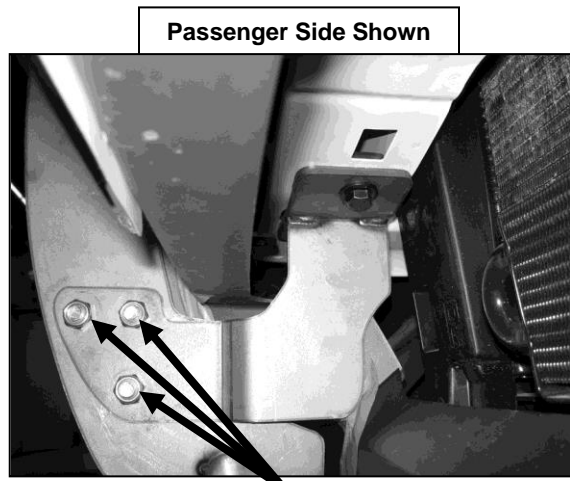


Figure 6

12mm Hex Head Bolts,
12mm Nylock Nuts, &
12mm Flat Washers

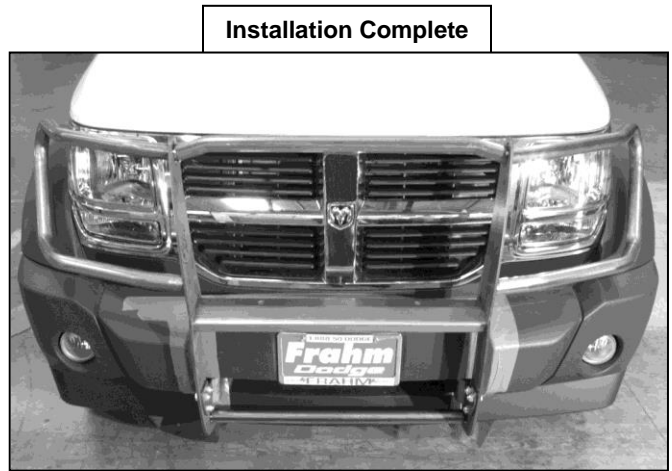


Figure 7