



INSTALLATION INSTRUCTIONS
2007-13 TOYOTA TUNDRA / 2008-12 SEQUOIA (NO SKID PLATE)
4 INCH BULL BAR PART # AL45-2004

PARTS LIST:

- | | |
|-----------------------------------|---------------------|
| 1 Bull Bar | 4 12mm lock Nuts |
| 4 12-1.75mm x 30mm Hex Head Bolts | 8 12mm Flat Washers |

PROCEDURE:

- 1. REMOVE CONTENTS FROM BOX. VERIFY ALL PARTS ARE PRESENT. READ INSTRUCTIONS CAREFULLY.**
2. Locate and remove the factory tow hooks underneath the vehicle (Figure 2). Save hardware for later use.
3. Locate Passenger Side Mounting Bracket and loosely attach it to vehicle by using the factory bolts removed in step two (Figure 3). Passenger Side shown in Figure 3. Repeat this step for Driver Side Mounting Bracket.
4. Once the Mounting Brackets are loosely installed, with help position the Bull Bar on the outer side of the Mounting Brackets and attach it with the included (4) 12-1.75 mm x 30mm Hex Head Bolts, (4) 12mm Nylock Nuts, and (8) 12mm Flat Washers (Figure 3).
5. Level and adjust the Bull Bar and tighten all hardware at this time.

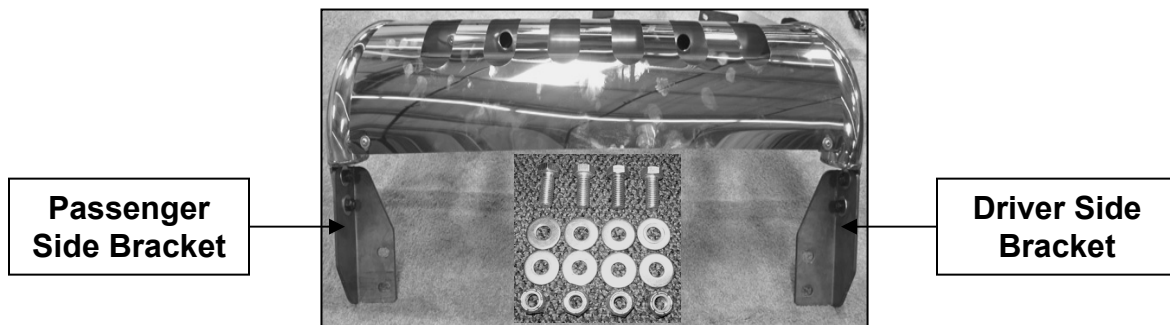


Figure 1

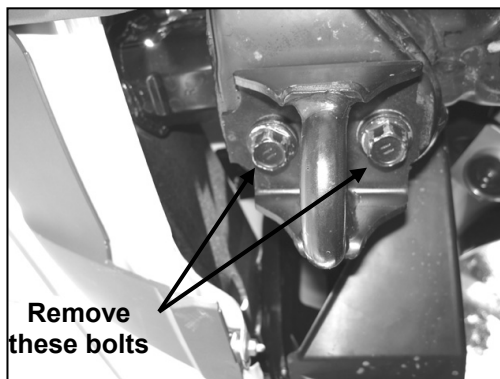


Figure 2

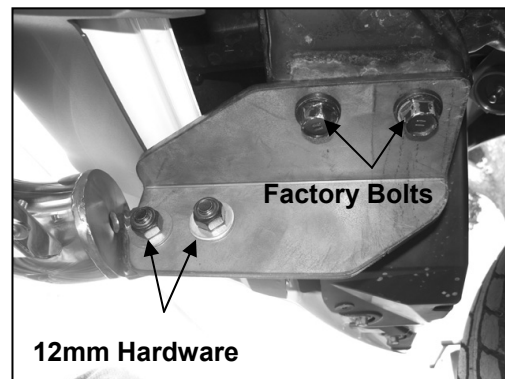


Figure 3