

### Parts List

1	Driver / left side mounting bracket
1	Passenger / right side mounting bracket

### Level of Difficulty

Easy



Scan for helpful install tips

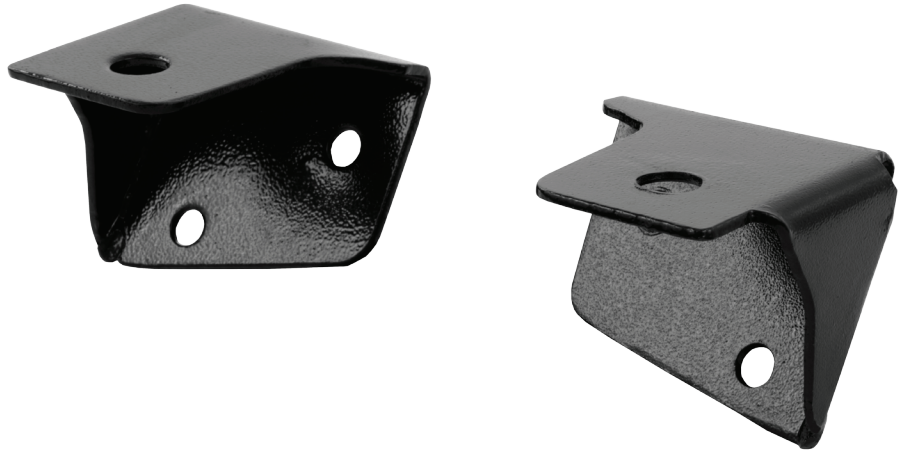
### Tools Required

Ratchet	Torx, T45
Torque wrench	

### Torque Specifications

	Torque Specifications	
<b>METRIC</b>	M6 bolt	3 ft.-lbs.
	M8 bolt	7 ft.-lbs.
	M10 bolt	16 ft.-lbs.
	M12 bolt	28 ft.-lbs.
<b>SAE</b>	1/4" bolt	3 ft.-lbs.
	5/16" bolt	7 ft.-lbs.
	3/8" bolt	16 ft.-lbs.
	7/16" bolt	20 ft.-lbs.
	1/2" bolt	28 ft.-lbs.

### Product Image



### Notes and Maintenance

Before you begin installation, read all instructions thoroughly.

Proper tools will improve the quality of installation and reduce the time required.

For black finishes, mild soap may be used to clean the product.

Refer to the table to the left when securing hardware during the installation process to help prevent damage to the product or vehicle.

### Step 1

Starting on the driver side, locate the two factory bolts positioned below the bottom corner of the windshield.



### Step 2

Remove the two factory bolts.

With the two factory bolts removed, place the driver-side mounting bracket up to the vehicle.

Reusing the factory hardware, secure the mounting bracket to the vehicle.



### Step 3

Repeat step 2 to install the passenger side mounting bracket.

With the brackets in position, it is recommended to tighten all brackets to the specific torque specifications, refer to the table on the first page.

Installation of mounting lights varies. Follow the instructions provided with the light.



### Step 4

Congratulations on the installation of your ARIES windshield hinge light bracket.

With the light brackets installed, periodic inspections should be performed to ensure all mounting hardware remains tight.

