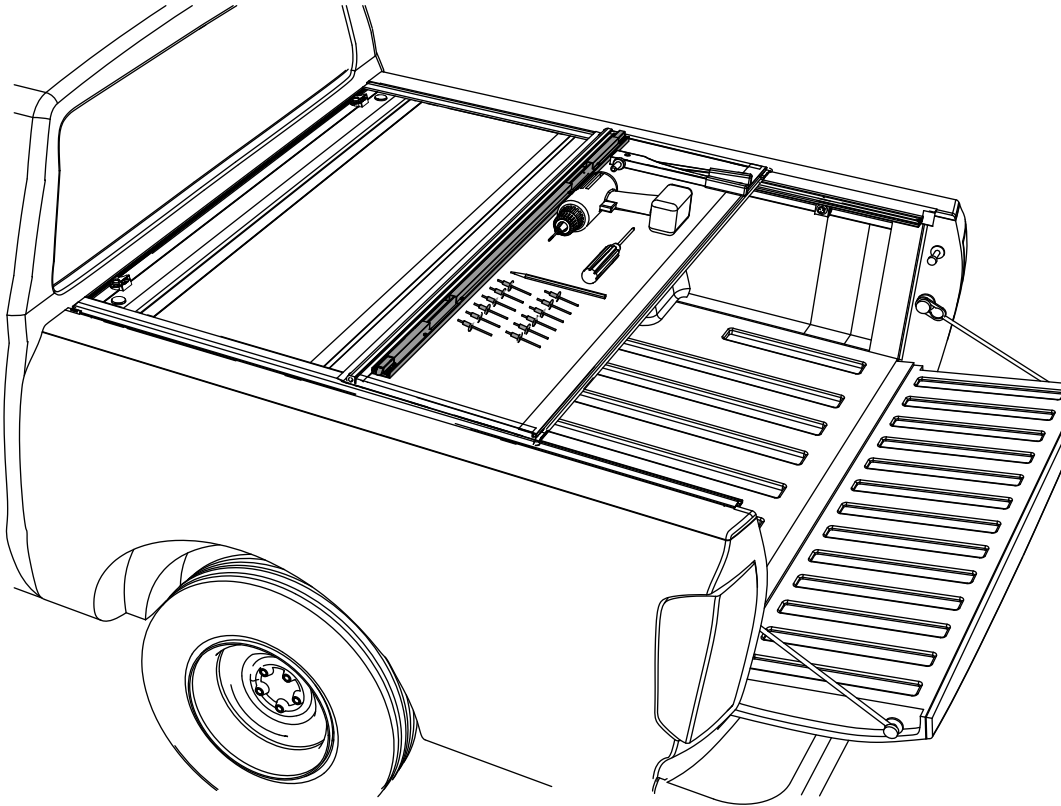


INSTALL SHEET

Latch Assembly Replacement



IMPORTANT: READ FIRST



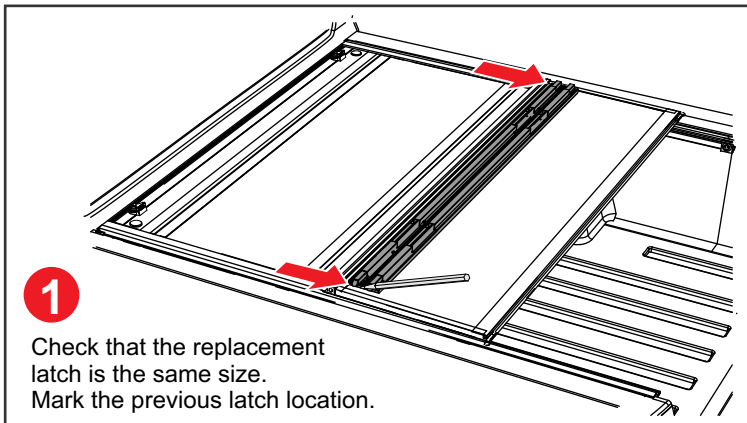
The Latch Kit includes:

- Complete latch assembly
- Rivets

Required Tools:

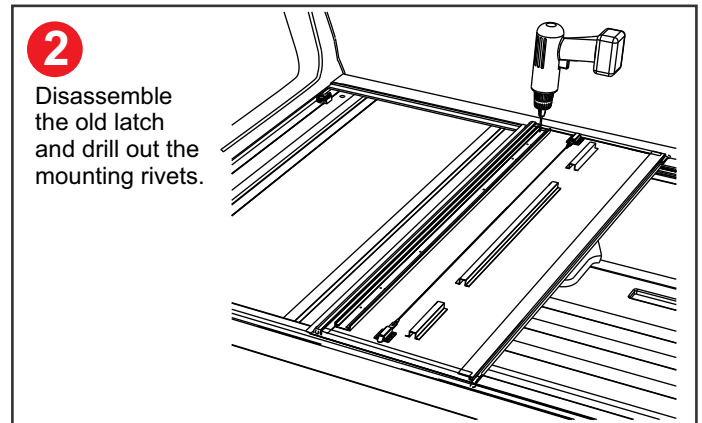
- Pencil to mark locations
- Electric drill with a 9/64" drill bit
- Philips screwdriver
- Rivet tool

Any standard/medium grade rivet tool as available at major retailers.
(ex: Stanley 10" Medium Duty Riveter Model MR33C)



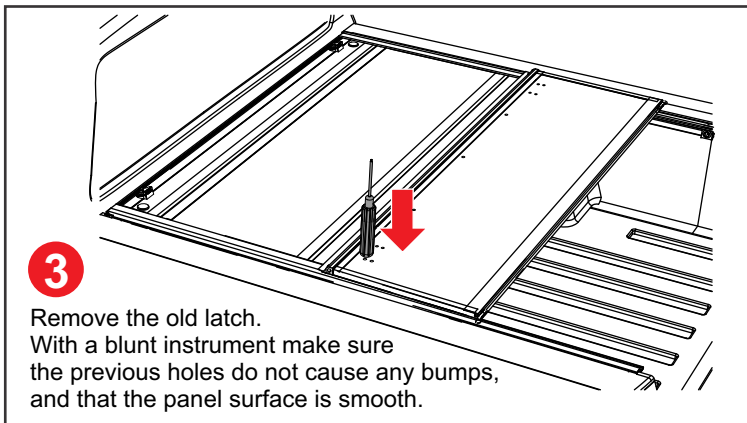
1

Check that the replacement latch is the same size.
Mark the previous latch location.



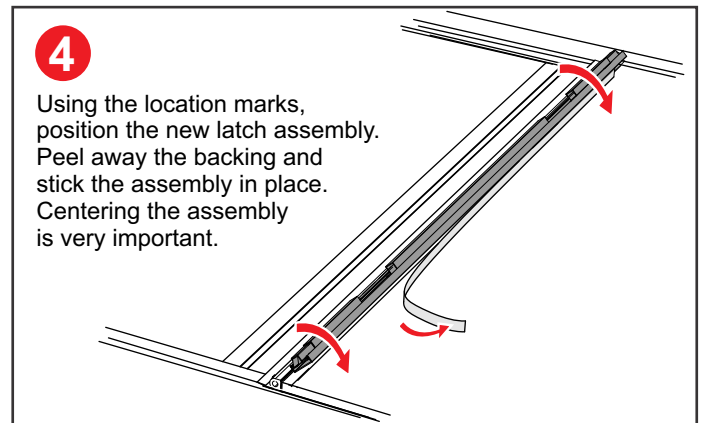
2

Disassemble the old latch and drill out the mounting rivets.



3

Remove the old latch.
With a blunt instrument make sure the previous holes do not cause any bumps, and that the panel surface is smooth.

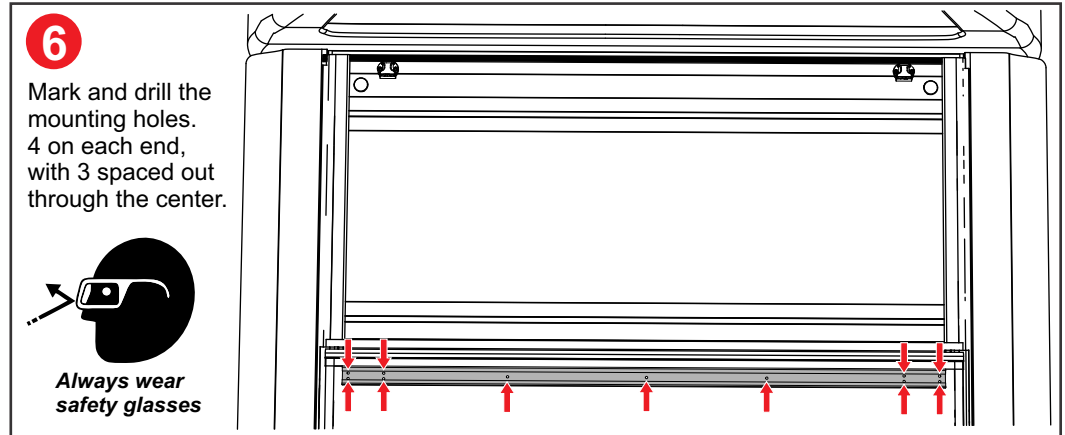
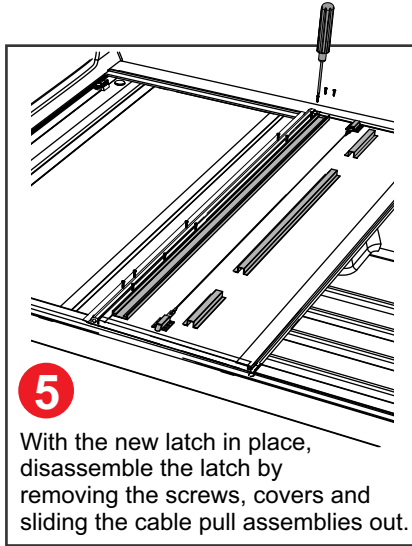


4

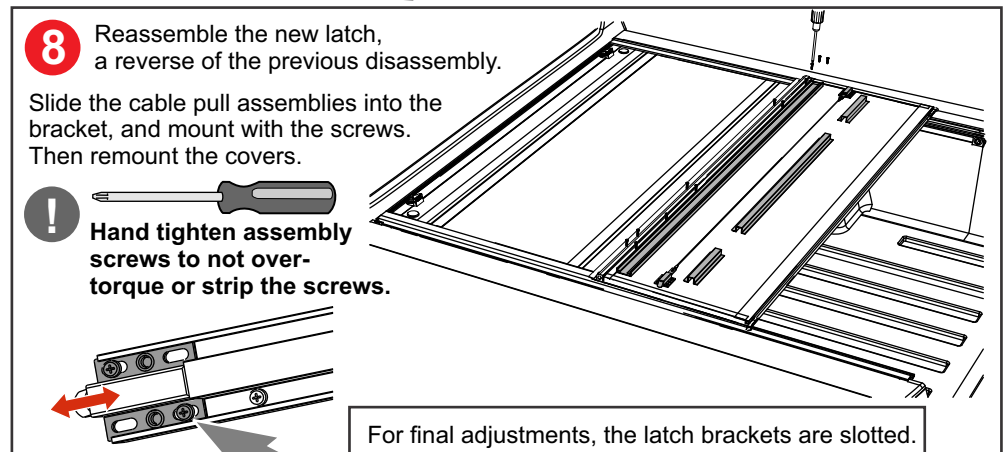
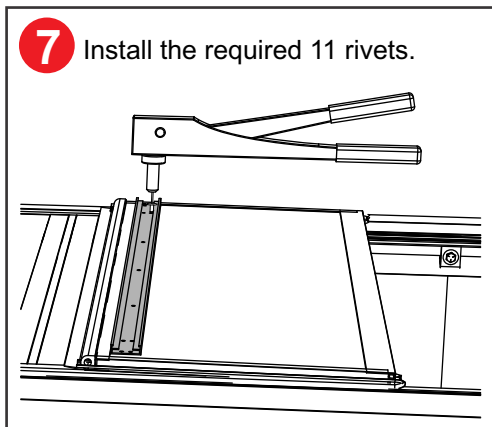
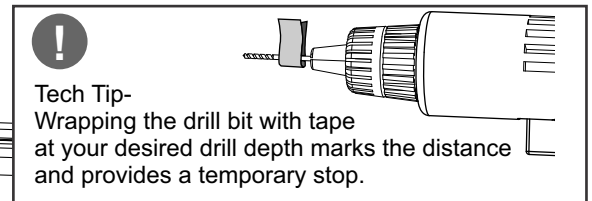
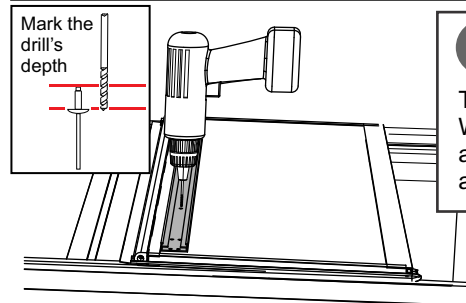
Using the location marks, position the new latch assembly. Peel away the backing and stick the assembly in place. Centering the assembly is very important.

INSTALL SHEET

Latch Assembly Replacement



Important Note:
The hole only needs to be the depth of the rivet.
Do Not drill through the panel!



For final adjustments, the latch brackets are slotted. It is very important to maintain full contact between the latch pull and the rail.



9 Open and close the cover to make sure the latch fits and latches correctly and securely. Adjust your new latch per the screws and slots in Step 8 if necessary

