

**REAR KITS:** BRJL18R4, BTJL18R4,  
BRJL18R4GH, BTJL18R4GH

**Jeep Wrangler JL BedRug/BedTred  
Interior Installation Instructions**



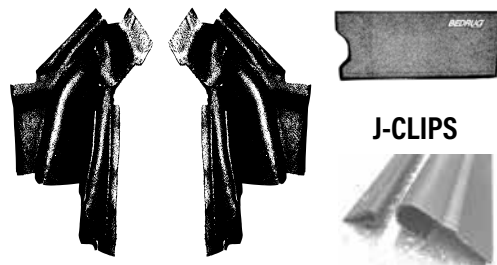
*Congratulations on choosing the finest interior flooring kit available for your Jeep. The BedRug/BedTred material is mold and mildew resistant, easily cleaned with water & household cleaning chemicals and extremely resistant to most chemicals.*

**\*\*Please retain these instructions for future reference in your vehicles glove box\*\***  
**\*\*INSTRUCTIONS INCLUDE JL REAR KITS WITH AND WITHOUT GAP HIDER\*\***

- **Kit Contents:** Driver side rear sidewall, passenger side rear sidewall, rear floor (with rear seat inserts for gap hider), tailgate piece, hook fastener, J-clips, adhesive promoter, instruction sheet.
- **Tools needed:** Utility knife or scissors, soap, water, and rubbing alcohol.

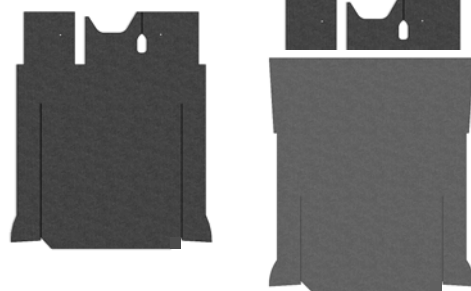
**NOTE:** If front kit has been purchased, it is recommended to install the front kit first.

**4-DOOR REAR KIT**



**WITHOUT GAP HIDER**

**WITH GAP HIDER**



**DON'T REMOVE YOUR SEATS!**

Our kits and your factory carpet are precut to make removing your seats unnecessary.

**PREPARATION**

1. Read all instructions before beginning installation.
2. Remove all flooring material (if equipped).
3. Thoroughly wash and dry areas where hook fastener will be applied.
4. Cut the hook fasteners with tape backing to match the lengths of the loop sewn on the underside of each BedRug/BedTred piece, and lengths of J-clips. Cut the longest pieces first.
5. Place the hook fasteners on each matching piece of loop sewn on the back side of each BedRug/BedTred piece. **\*\*DO NOT REMOVE TAPE BACKING AT THIS TIME!\*\***

**IMPORTANT:** Jeep floor should be at least 68°F (20°C) for maximum adhesion. Clean all areas with rubbing alcohol before applying tape. When removing backing, do not touch adhesive.



## INSTALLING THE REAR SIDEWALLS

6. Fit rear sidewalls in place, tucking in the rear most part first, then around seat belt and under remaining trim. (**Fig. 1 & Fig. 2**) Like the factory carpet kit, there is a flap at the bottom of both wheel well pieces designed to roll onto the cargo floor. Cargo floor piece will overlap flap.



FIGURE: 1



FIGURE: 2

**NOTE:** For Jeeps with a sub woofer, trim the BedRug/BedTred using the score line on the back of the passenger rear sidewall, then tuck under factory trim. (**Fig. 3 & Fig. 4**)



FIGURE: 3



FIGURE: 4

**NOTE:** For JL Jeeps with gap hidens behind the back seat, skip the next page.



## INSTALLING REAR FLOOR (without gap hider)

7. Fold the rear seat backs down.
8. Locate the carpet holding posts under the rear seats. **(Fig. 5)** Insert the rear cargo piece under the rear seat, locating the holes in the piece on the posts and around the seat belts. **(Fig. 6 & Fig. 7)**

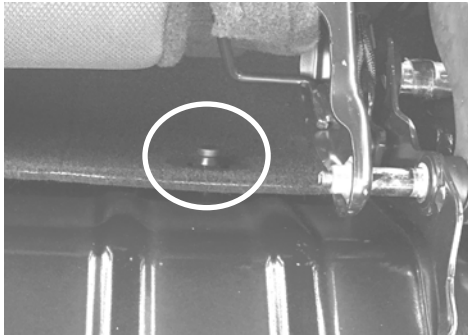


FIGURE: 5



FIGURE: 6



FIGURE: 7

9. Clean large J-clip with alcohol and apply adhesive promoter to the J-clip. **(Fig. 8)** Peel off tape backing and apply matching length of hook fastener to J-clip. Slide J-clip onto edge of rear compartment lid and align J-clip with rear floor. **(Fig. 9)** Pull compartment handle through slit in floor piece and firmly press floor onto hook fastener to secure floor to J-clip. **(Fig. 10)**



FIGURE: 8



FIGURE: 9



FIGURE: 10

10. Clean rear floor trim with alcohol and apply adhesive promoter. **(Fig. 11)** Peel off tape backing from hook fastener and press rear piece to rear floor trim. **(Fig. 12)** Repeat on other side.



FIGURE: 11

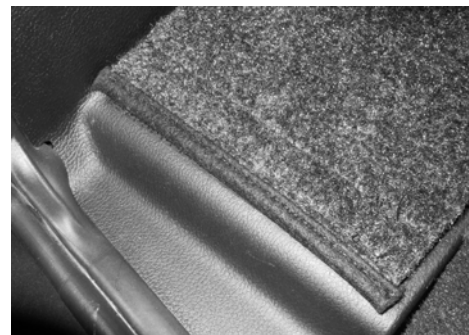


FIGURE: 12

**FITMENT NOTE:** The rear floor section is designed to fit on top of the rear wheel well pieces.

**\*SKIP TO PAGE 7\***

## INSTALLING REAR FLOOR (with gap hider)

7. Fold the rear seat backs down.
8. Folding the larger gap hider back, insert the larger center piece down between the seat and the gap hider. Pull the seat belts through the opening and locate the piece on the carpet holding post. (**Fig. 13 & Fig. 14**)
9. Fold the smaller gap hider back and insert the smaller center piece down between the seat and gap hider. Locate it on the carpet holding post. (**Fig. 15**)



FIGURE: 13

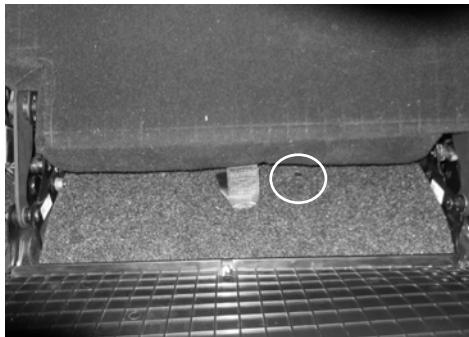


FIGURE: 14

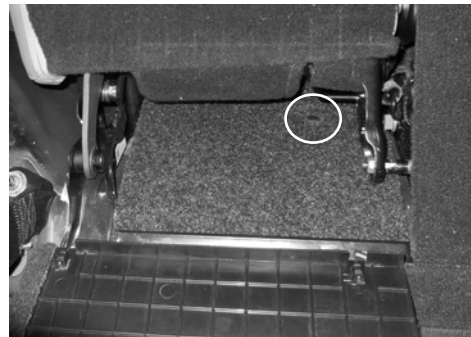


FIGURE: 15

10. Clean a small J-clip with alcohol and apply adhesive promoter. Peel off tape backing of a matching length of hook fastener and apply to J-clip. (**Fig. 16**) Repeat these steps for the remaining J-clips.
11. Place 6 small J-clips on the top edges of the gap hidere. (**Fig. 17**) Place the remaining 4 small J-clips at the bottom edge of the gap hider hinge. (**Fig. 18**)



FIGURE: 16



FIGURE: 17

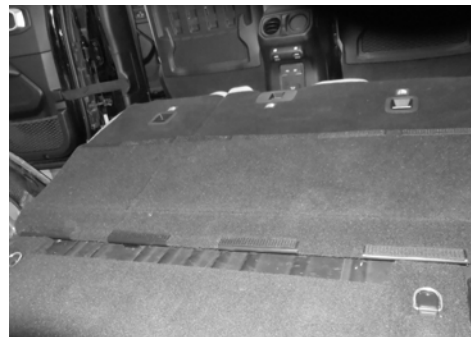


FIGURE: 18

## INSTALLING REAR FLOOR (with gap hider continued)

- 12.** Clean the large J-clip with alcohol and apply adhesive promoter to the J-clip. (**Fig. 19**) Peel off tape backing and apply matching length of hook fastener to J-clip. Slide J-clip onto edge of rear compartment lid and align J-clip with rear floor. (**Fig. 20**) Lay rear floor in place, and pull compartment handle through slit in floor piece and firmly press floor onto hook fastener to secure floor to J-clip. (**Fig. 21**)



FIGURE 19



FIGURE 20



FIGURE 21

- 13.** Lift the forward part of the rear floor to access the 10 J-clips. Align the floor piece with the 4 lower J-clips and press floor onto the hook fasteners on the J-clips. (**Fig. 22**) Press the top edge of the floor piece onto the 6 hook fasteners on the J-clips. (**Fig. 23**)



FIGURE 22

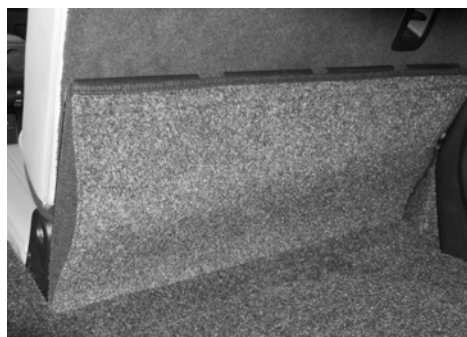


FIGURE 23

- 14.** Clean rear floor trim with alcohol and apply adhesive promoter. (**Fig. 24**) Peel off tape backing from hook fastener and press rear piece to rear floor trim. (**Fig. 25**) Repeat on other side.



FIGURE 24

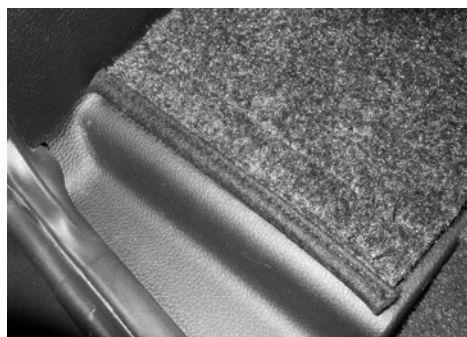


FIGURE 25

**FITMENT NOTE:** The rear floor section is designed to fit on top of the rear wheel well pieces.

**INSTALLING TAILGATE PIECE**

- Using alcohol, clean top and bottom areas of inside tailgate trim surface where hook fastener will be applied, and apply adhesive promoter to tailgate trim. Remove tape backing from fastener, align tailgate piece to tailgate, and attach to the tailgate. Firmly rub entire surface to ensure good attachment. (**Fig. 26 and Fig. 27**)



FIGURE 26:



FIGURE 27:

## **WARNING**

The use of front floor mats is not recommended with BedRug or BedTred floor kits. If floor mats are used, it is imperative to re-use the removable retention hooks from the factory carpet, installed to the manufacturer's specifications. Do not use floor mats or liners with BedTred Kits. Do not use floor mats or liners with BedRug Kits without retention hooks.

**\*\*Please retain these instructions for future reference in your vehicle's glove box\*\***

## **BEDRUG<sup>®</sup> BEDTRED<sup>™</sup> CLEANING INFORMATION**

The mildew resistant BedRug/BedTred foam will not absorb liquids. The engineered composite surface resists stains and deterioration from most acids, chemicals, gas and oils, etc. Therefore, by following the cleaning instructions below, your BedRug/BedTred will remain serviceable for as long as you own your vehicle.

### **Cleaning your BedRug is easy:**

1. A vacuum, broom, brush or compressed air can be used to remove dirt, grime, sand, mulch etc. Due to the fact that water will not harm the product, pressure washing is also an effective way to clean a soiled BedRug/BedTred.
2. Although most acids will not harm the BedRug/BedTred, baking soda should be applied immediately to neutralize the acid to ensure the safety of the paint on the vehicle.
3. To clean tougher jobs such as gasoline, oil, chemicals, acid spills or leaks from your BedRug/BedTred use detergent soap with degreaser and water, then rinse thoroughly. This detergent soap is used in most car wash locations with pressure washing equipment. The polypropylene closed-cell foam will not absorb water and the composite surface dries in minutes.

If you have additional questions, call BedRug Inc. customer service at 800-462-8435.

## **LIMITED WARRANTY**

BedRug Inc. warrants BedRug and BedTred products for Jeep vehicles for three years from the original date of purchase. Warranty is limited to the original purchaser and is not transferable. Product is warranted to be free from defects in materials and workmanship. The warranty is void if the product has been damaged by accident, unreasonable use, neglect, improper service/installation/removal, modifications, acts of God, normal wear and tear, or other causes not arising out of defective materials or workmanship. Consequential and incidental damages are not covered under this warranty. Warranty does not cover labor, the cost of shipping, or cost of returning the product for warranty service or inspection. The terms of this warranty may vary from state to state. You may have rights under specific state laws that differ from the terms of this warranty. Proof of purchase will be required for warranty service. Product should be cleaned before return. A return authorization number must be obtained prior to returning any product. For warranty instructions, returns, and packaging contact BedRug Inc. Customer Service at 800-462-8435.

## **PRODUCT REGISTRATION**

Thank you for purchasing your BedRug product! We would appreciate it if you would take a few minutes to register your purchase. Registration allows us to provide, with your permission, important updates, service information, helpful hints or warranty service should you ever require technical support. BedRug offers the option of returning product registration forms electronically, rather than having to fill them out by hand. You can be assured that BedRug does not share or sell the information you provide. Save a copy of your sales receipt. Activate your warranty by registering your product online at <http://www.bedrug.com/customer-service/product-registration.html> or by scanning the QR code. You will need the 6-digit lot and date code found on the underside of the tailgate, see label example below.

