



REAR KITS: BRCJ76R
BRCJ81R
BRYJ87R

**Jeep Wrangler CJ-7/YJ BedRug
Interior Installation Instructions**



Congratulations on choosing the finest interior flooring kit available for your Jeep. BedRug material is mold and mildew resistant, easily cleaned with water & household cleaning chemicals and extremely resistant to most chemicals.

- **Kit Contents:** Driver side wheel well, passenger side wheel well, rear cargo area floor, tailgate piece, hardware kit, and instruction sheet.
- **Tools needed:** Utility knife, soap, water and rubbing alcohol.



PREPARATION

1. Read all instructions before beginning installation.
2. Remove rear seat and old Jeep flooring material.
3. Wash and dry the floor pan and wheel well areas thoroughly.
4. Cut the hook with tape backing, provided in the hardware kit, to the lengths indicated on drawing (page 5). Place the loop onto each location. Do not remove the tape backing at this time.
(Note: Cut the longest pieces first.)

IMPORTANT: Jeep floor should be at least 68°F (20°C) for maximum adhesion. Clean all areas with rubbing alcohol before applying tape. When removing backing, do not touch adhesive. If both front and rear kits were purchased be sure to install rear cargo area first. The BedRug product is designed to work with most factory tub layouts. *If the Jeep has any aftermarket accessories or custom parts such as seats brackets or roll bars you may need to trim our product to fit.*

INSTALLING THE WHEEL WELLS

5. Fit driver side wheel well piece into place (Fig. 1), markings on back of part indicate where to make cuts for roll bar, and rear seat bracket (if equipped). Be sure to cut only markings necessary for your Jeep. (See drawing on page 5).
6. Start at the rear of vehicle, making sure to line up bottom edge to the floor and back edge tight to the rear flange. (Fig. 2 and Fig. 3) Clean surface with alcohol then remove the film backing and roll the part back into place. Firmly press the top surface to ensure adhesive attachment.
7. If your wheel well piece has fastener along the top edge, pull down the top of the wheel well piece to access the hook fastener. Clean the surface with alcohol then remove the film backing and roll the part back into place. Firmly press the top surface to ensure adhesive attachment.



FIGURE 1:

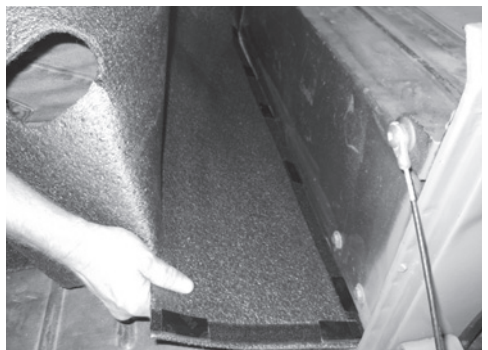


FIGURE 2:

BEDRUG, INC. ■ 528 Myatt Dr, Madison, TN 37115 ■ 800-462-8435 ■ bedrug.com



FIGURE 3:

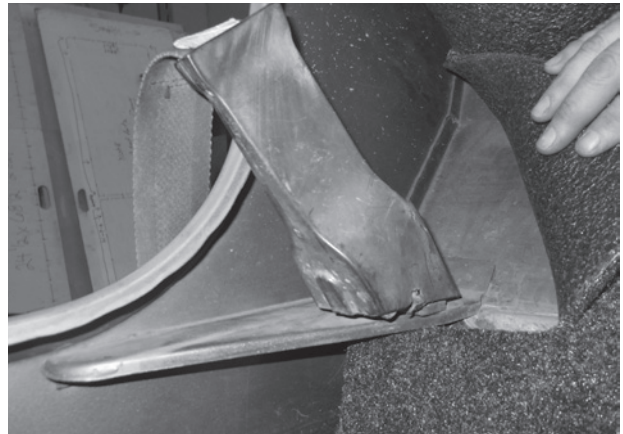


FIGURE 4:

8. Now pull back the front of the wheel well piece, clean surface with alcohol remove the tape backing and press firmly back into place. (Fig. 4) Note: Depending on your roll bar mounting location, use the indicator marks on the back of the wheel well piece as a guide to make cuts for the seat belt mounts as well as flange and roll bar cutouts. (Fig. 5 and Fig. 6)
9. Repeat steps 5 thru 8 for the passenger side wheel well.



FIGURE 5:



FIGURE 6:

INSTALLING CARGO AREA FLOOR

NOTE: For jeeps with a rear seat, trimming will be necessary to fit around seat mount and seat belt attachment points. There are score lines on the back of the part to use as a guide.

10. With the rear seat removed, place the floor piece into position. Cut holes in floor piece if rear seat and seat belts are present, using marks on back of part as a guide. (Fig. 7 and Fig. 8) Lift the floor piece and pull the seat belts thru the holes.
11. Now pull up floor piece at the front side to access the hook fastener. Clean surface with alcohol then remove the film backing from all of the locations behind the rear seat and roll the floor back into place. Firmly press the top surface to ensure adhesive attachment. (Fig. 9 and Fig. 10)



FIGURE 7:



FIGURE 8:



FIGURE 9:

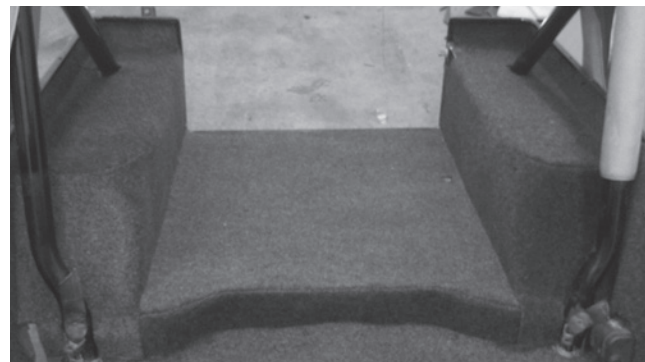


FIGURE 10:

12. Now repeat the process for hook fastener at the sides by the wheel wells, and then at the rear by the door opening. (Fig. 11) Note: Adjustments can be made after part is installed for proper fit. Simply remove the piece that needs adjusting, the hook fastener will stay in place on jeep, then reinstall as necessary.



FIGURE 11:

**COMPLETED CARGO AREA INSTALLATION**

INSTALLING TAILGATE PIECE

13. Clean surface with alcohol then remove film backing from the tailgate piece and attach to the tailgate. Firmly rub entire surface to ensure good attachment. (Fig. 12 and 13)

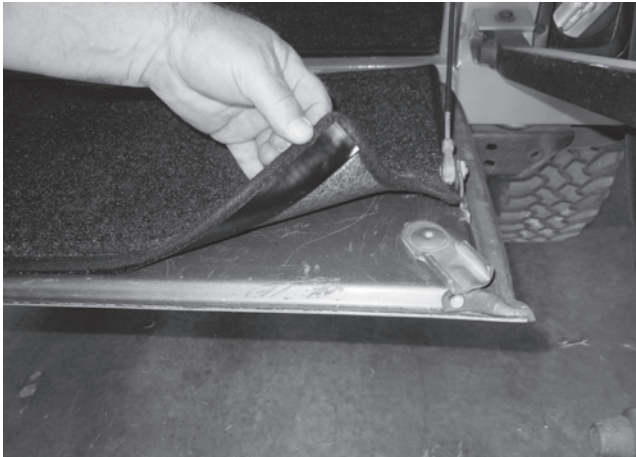


FIGURE 12:



FIGURE 13:

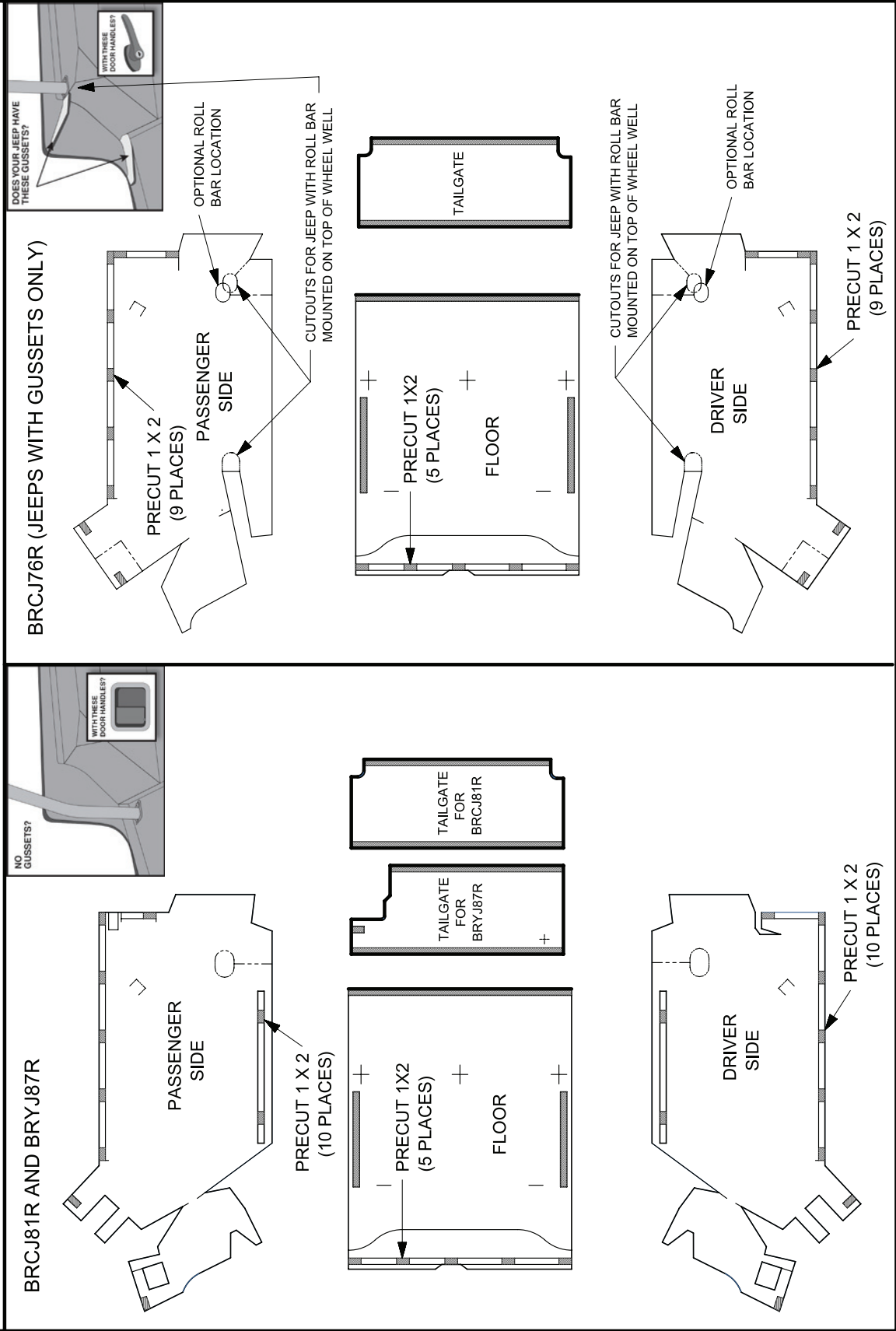


COMPLETED TAILGATE INSTALLATION

BRCJ76R / BRCJ81R / BRYJ87R HOOK INSTALLATION

FOR THE FLOOR AND TAILGATE PIECES, CUT LOOP WITH TAPE BACKING TO THE LENGTH OF LOOP SEWN ON PART (EXCEPT WHERE NOTED.) USE PRECUT 1 X 2 HOOK ON THE SIDE PIECES SPACED AS SHOWN.

BOTTOM VIEW (FOAM SIDE)



WARNING

The use of front floor mats is not recommended with BedRug or BedTred floor kits. If floor mats are used, it is imperative to re-use the removable retention hooks from the factory carpet, installed to the manufacturer's specifications. Do not use floor mats or liners with BedTred Kits. Do not use floor mats or liners with BedRug Kits without retention hooks.

****Please retain these instructions for future reference in your vehicle's glove box****

BEDRUG[®] BEDTRED[™] CLEANING INFORMATION

The mildew resistant BedRug/BedTred foam will not absorb liquids. The engineered composite surface resists stains and deterioration from most acids, chemicals, gas and oils, etc. Therefore, by following the cleaning instructions below, your BedRug/BedTred will remain serviceable for as long as you own your vehicle.

Cleaning your BedRug is easy:

1. A vacuum, broom, brush or compressed air can be used to remove dirt, grime, sand, mulch etc. Due to the fact that water will not harm the product, pressure washing is also an effective way to clean a soiled BedRug/BedTred.
2. Although most acids will not harm the BedRug/BedTred, baking soda should be applied immediately to neutralize the acid to ensure the safety of the paint on the vehicle.
3. To clean tougher jobs such as gasoline, oil, chemicals, acid spills or leaks from your BedRug/BedTred use detergent soap with degreaser and water, then rinse thoroughly. This detergent soap is used in most car wash locations with pressure washing equipment. The polypropylene closed-cell foam will not absorb water and the composite surface dries in minutes.

If you have additional questions, call BedRug Inc. customer service at 800-462-8435.

LIMITED WARRANTY

BedRug Inc. warrants BedRug and BedTred products for Jeep vehicles for three years from the original date of purchase. Warranty is limited to the original purchaser and is not transferable. Product is warranted to be free from defects in materials and workmanship. The warranty is void if the product has been damaged by accident, unreasonable use, neglect, improper service/installation/removal, modifications, acts of God, normal wear and tear, or other causes not arising out of defective materials or workmanship. Consequential and incidental damages are not covered under this warranty. Warranty does not cover labor, the cost of shipping, or cost of returning the product for warranty service or inspection. The terms of this warranty may vary from state to state. You may have rights under specific state laws that differ from the terms of this warranty. Proof of purchase will be required for warranty service. Product should be cleaned before return. A return authorization number must be obtained prior to returning any product. For warranty instructions, returns, and packaging contact BedRug Inc. Customer Service at 800-462-8435.

PRODUCT REGISTRATION

Thank you for purchasing your BedRug product! We would appreciate it if you would take a few minutes to register your purchase. Registration allows us to provide, with your permission, important updates, service information, helpful hints or warranty service should you ever require technical support. BedRug offers the option of returning product registration forms electronically, rather than having to fill them out by hand. You can be assured that BedRug does not share or sell the information you provide. Save a copy of your sales receipt. Activate your warranty by registering your product online at <http://www.bedrug.com/customer-service/product-registration.html> or by scanning the QR code. You will need the 6-digit lot and date code found on the underside of the tailgate, see label example below.

