



**Bestop**

## Sport Bar Cover Installation Instructions

Model: Wrangler 1986 - 1990

Part Number: 80008

**Note:** Please read these instructions thoroughly before beginning the installation. After completing the installation, keep this manual for future reference.

### Parts List

Fabric Assembly  
Fabric Covered Foam Tubes  
Foam, 60" x 1/2" x 9" (long)  
Foam, 36" x 1/2" x 9" (med.)  
Foam, 23 1/2" x 1/2" x 9" (short)

### Installation Time

1 ea.  
2 ea.  
1 ea.  
2 ea.  
2 ea.



30 Minutes

### Skill Level



1 - Easy

### Warning:

This product is designed to enhance the appearance of the vehicle and to shield the occupants from ordinary weather conditions. Do not rely in any way on the components of this product to contain occupants within the vehicle, or to protect against injury or death in the event of an accident. This product will not protect the occupants from falling objects. Never operate vehicle in excess of manufacturer's specifications.

**Wear seat belts at all times.**

Read and follow, precisely, all installation instructions provided when installing this product. Failure to do so may result in a poor fit and could place occupants of the vehicle in a potentially dangerous situation.

### Installation

#### Step One

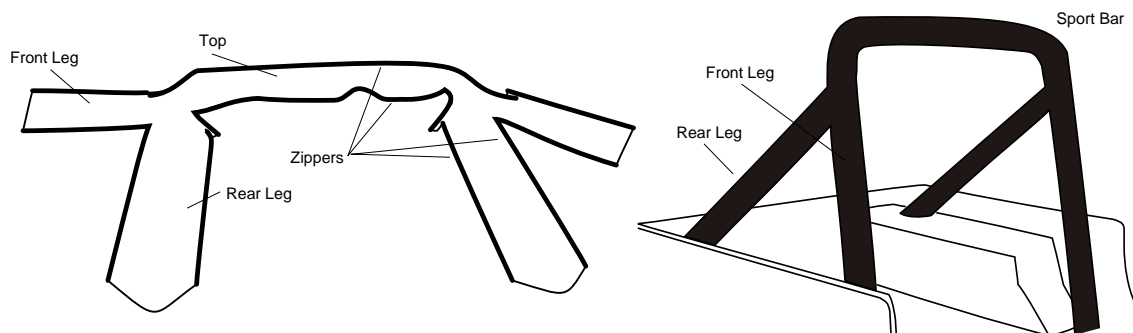
If a top is on the vehicle, it must be removed before starting this installation.

#### Step Two

On a flat, clean surface, spread out the fabric assembly. The long part will go along the top of the sport bar, the four legs will go on the angled rear legs and the short front legs (see Figure 1).

**Figure 1**

Sport Bar Fabric Assembly -  
Vinyl down



#### Step Three

Open up the Sport Bar Cover so that the inside (white) of the cover is facing up. Lay the long (60") piece of foam, with the tape side down, on the top part of the fabric assembly. Make sure that the foam is centered on the fabric. Lift the foam up enough to remove the protective strip from the adhesive and press the foam firmly into place on the fabric. The adhesive is intended to assist in the installation of the pad and may not form a permanent bond.

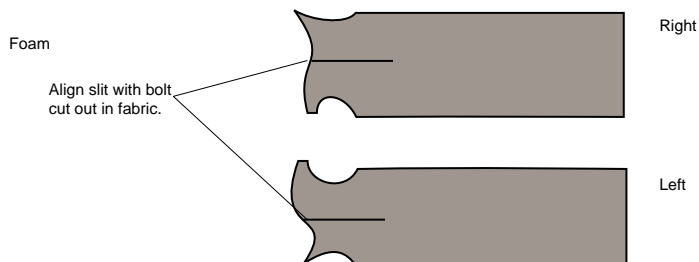
#### Step Four

Lay the medium (36") pieces of foam, with the tape side down, on each of the longer rear legs of the fabric assembly. Make sure that the foam is centered on the fabric. Lift the foam up enough to remove the protective strip from the adhesive and press the foam firmly into place on the fabric.

**Step Five**

Lay the short (23 1/2") pieces of foam, with the tape side down, on each of the short front legs of the fabric assembly. Make sure that the foam is centered on the fabric. Align the slit in the foam with the bolt cut out in the fabric. Make sure that the right and left foam pieces are on the proper sides (see Figure 2). Lift the foam up enough to remove the protective strip from the adhesive and press the foam firmly into place on the fabric.

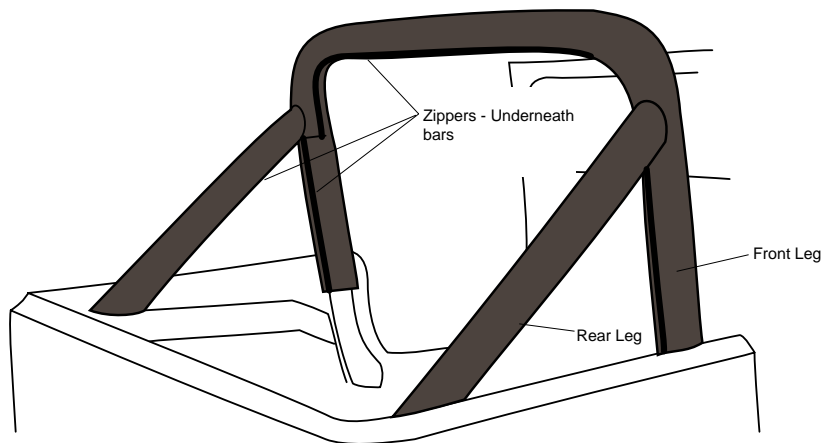
**Figure 2**



**Step Six**

Place the sport bar fabric and foam assembly over the roll bars. The zippers should all be on the underside of the bars. Place the rear legs of the fabric assembly loosely over the bar (see Figure 3).

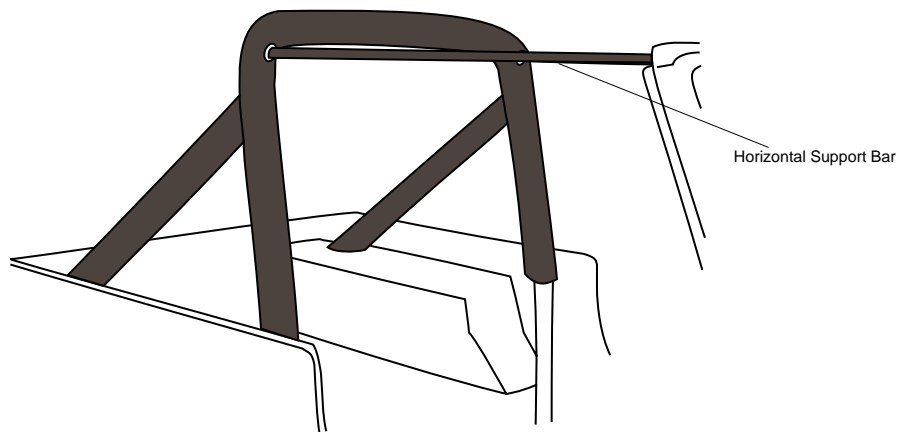
**Figure 3**



**Step Seven**

On the front side of the assembly, locate the position of the holes for the horizontal bars (see Figure 4).

**Figure 4**



**Step Eight**

From the driver's side of the vehicle, close the 11" shoulder zipper, then close the long zipper across the sport bar. Make sure that the fabric is centered on the bar. The fabric and foam should fit snugly against the top of the rear bar.

**Step Nine**

Again, start on the driver's side and check that the top of the rear legs of the fabric assembly fit snugly against the top of the rear bar. Close the zipper on the rear legs, from top to bottom.

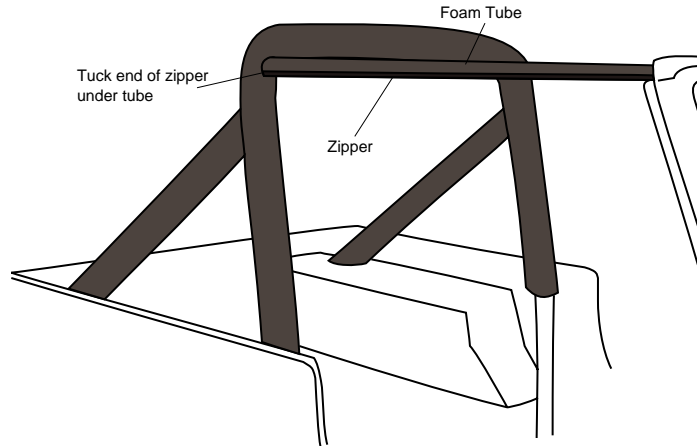
*Step Ten*

Close the zipper on the front legs, from top to bottom. Make sure that the fabric tab lays flat under the zipper.

*Step Eleven*

Place a fabric covered foam tube onto each of the horizontal bars so that it zips from front to back Position the fabric with the zipper underneath the bar. Close the zipper and tuck the end of the inside the tube.

**Figure 5**



**LIMITED WARRANTY**

We warrant our product to be free from defects in material and workmanship, for the terms specified below, provided there has been normal use and proper maintenance. This warranty applies to the original purchaser only. All remedies under this warranty are limited to the repair or replacement of any item or items found by the factory to be defective within the time period specified.

If you have a warranty claim, first you must call our factory at the number below for instructions. You must retain proof of purchase and submit a copy with any items returned for warranty work. Upon completion of warranty work, if any, we will return the repaired or replaced item or items to you freight prepaid. Damage to our products caused by accidents, fire, vandalism, negligence, misinstallation, misuse, Acts of God, or by defective parts not manufactured by us, is not covered under this warranty.

THE WARRANTY TIME PERIOD IS AS FOLLOWS: ALL "SOFT GOODS" MANUFACTURED BY OUR COMPANY (USING PRIMARILY VINYL, PLASTICS, AND/OR FOAM): ONE YEAR FROM DATE OF PURCHASE.

ANY IMPLIED WARRANTIES OF MERCHANTABILITY AND/OR FITNESS FOR A PARTICULAR PURPOSE CREATED HEREBY ARE LIMITED IN DURATION TO THE SAME DURATION AND SCOPE AS THE EXPRESS WRITTEN WARRANTY. OUR COMPANY SHALL NOT BE LIABLE FOR ANY INCIDENTAL OR CONSEQUENTIAL DAMAGE.

Some states do not allow limitations on how long an implied warranty lasts, or the exclusion or limitation of incidental or consequential damages, so the above limitations or exclusions may not apply to you.

This warranty gives you specific legal rights, and you may also have other rights which vary from state to state.

For further information or request for warranty work, please contact:

Bestop Inc.  
Customer Service  
(800)845-3567