



BLUE OX

BX1308

2011-12 BMW Mini Cooper Countryman Installation Instructions

Serial Number

Please read BOTH these Installation Instructions and the General Towing Instructions before attempting to install or operate this equipment.

1. Blue Ox® towing products and accessories are intended to be installed by Blue Ox® Dealers who are familiar with our products and have the equipment and knowledge to do “fit work.” When necessary, Blue Ox® Dealers can be found at www.blueox.com or by contacting our Customer Care Department at (402) 385-3051.

Attachment Tab Height: 14”

Attachment Tab Width: 20”

2. Many Blue Ox® baseplates are designed to use existing holes and hardware to mount the baseplate to the towed vehicle. Even though bolts are there, do not assume they are adequate for baseplate mounting. Always use hardware supplied in the hardware kit or existing hardware specified in the Baseplate Towing Installation Instructions.

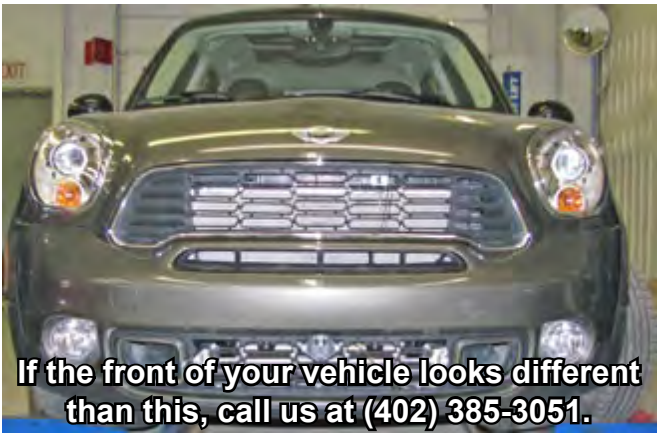
Bolt Torque Specifications
Torque in Foot-Pounds for Metric Bolts

Bolt Size	Grade 8.8	Grade 10.9
6MM	6	8
8MM	16	22
10MM	31	40
12MM	54	70
14MM	89	117

Confirm the towability and pre-towing procedures for your vehicle with the owner’s manual or contact the vehicle’s manufacturer for specific towing procedures.

Bolt Torque Specifications
Torque in Foot-Pounds for Inch Bolts

Bolt Size	Grade 5	Grade 8
1/4”	10	14
5/16”	19	29
3/8”	33	47
7/16”	54	78
1/2”	78	119
5/8”	154	230



If the front of your vehicle looks different than this, call us at (402) 385-3051.

! WARNING

Failure to read and follow these instructions could result in separation of the towed vehicle from the tow bar, causing property damage, loss of towed vehicle, personal injury or death.



BLUE OX

BX1308

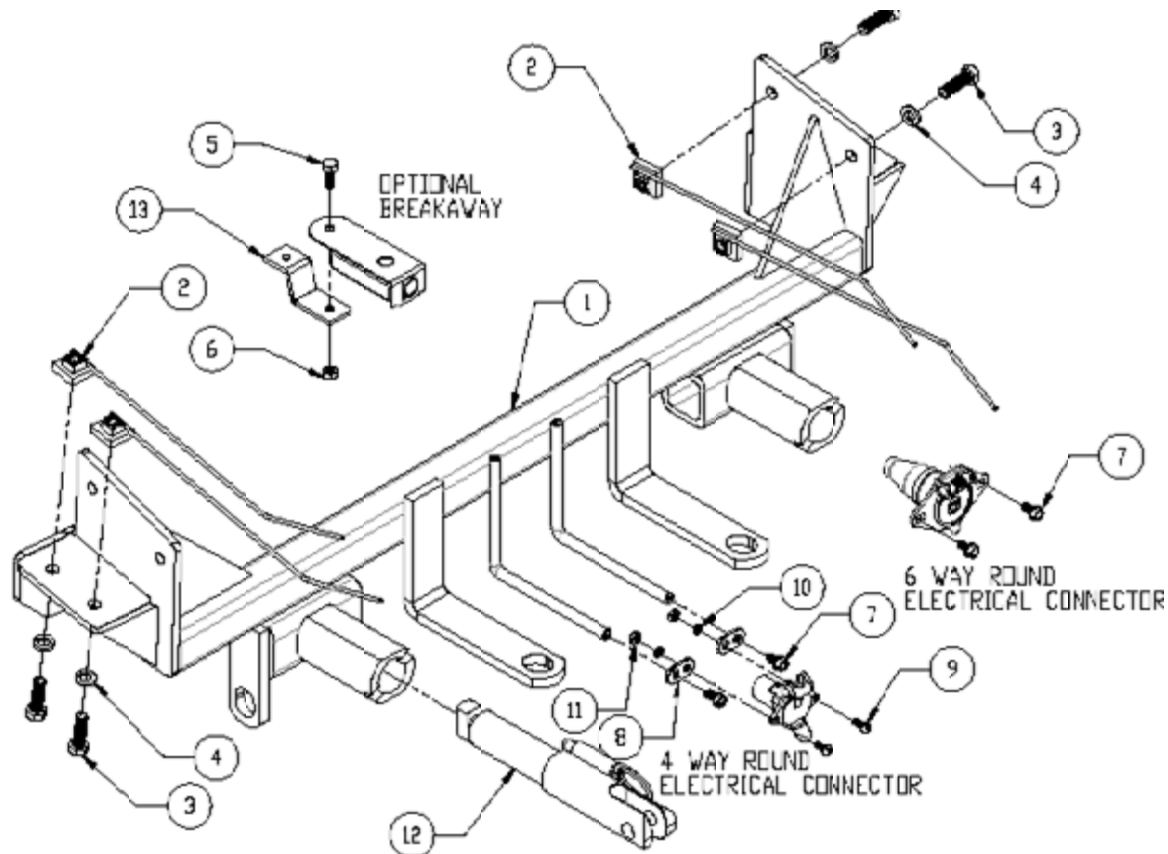
2011-12 BMW Mini Cooper Countryman Installation Instructions

Parts List

Ref. No.	Qty.	Part #	Description
1	1	61-6879	Weldment, BX1308
2	8	61-5208	Weldment, Nut Plate, 1/4 x 1 x 1, 3/8"/14" wire
3	8	201-0368	3/8-16 x 1 1/4" Hex Head Bolt, Grd. 5
4	8	203-0010	3/8" Lock Washer, ZP
5	1	201-0050	1/4-20 X 3/4" Hex Bolt Grd.5, ZP
6	1	202-0102	1/4-20 Hex Nyl Nut, ZP
7	2	201-0553	1/4-20 X 1/2" Hex Washed Type F TCS, ZP
8	2	101-5822	Adapter, 4 Way Connector
9	2	201-0192	#10-32 x 1/2" Slot, Round Head Screw
10	2	203-0054	#10 Lock Washer
11	2	202-0047	#10-32 Hex Nut
12	2	62-3469	Attachment Tab Assembly, Rem, SF/LB, 1 Hole
13	1	102-7195	Breakaway Bracket, BX1308
	2	226-0046	Baseplate Safety Cable, 36" Class III (Not Shown)
	2	229-0359	Quicklink, 3/8", ZP (Not Shown)
	2	290-0437	Receiver, Cap Plug, Black (Not Shown)
	2	290-0275	Cable Tie, 8 Inch Nylon (Not Shown)

Tools Required

- 8MM Socket
- 10MM Socket
- 13MM Socket
- 16MM Socket
- 9/16" Socket
- T20 Torx
- T25 Torx
- Large Vise Grip
- Flat Screwdriver
- Utility Knife
- Torque Wrench
- Drill
- 13/32" Drill Bit
- Loctite RED



Important:

Use only genuine factory replacement parts on your baseplate. Do **NOT** substitute homemade or non-typical parts. If a bolt is lost or in need of replacement, for your safety and the preservation of your baseplate, be sure to use a replacement bolt of the same grade (In most cases it will be Grade 5, please reference the parts list above). Replacement parts may be ordered through your nearest Blue Ox® Dealer or Distributor. Failing to follow and/or altering these installation instructions in either installation or required equipment will void the manufacturer's warranty.



BLUE OX

BX1308 2011-12 BMW Mini Cooper Countryman Installation Instructions

Attachment Tabs:

Due to the design of the removable tabs, the RangeFinder II, Acclaim and Ambassador tow bars can not be used. Adapters, except the BX8833 and BX88151, can be used with this baseplate.

Installation Notes: The cover, fascia, grille, air induction tube, temperature sensor, bumper and washer tubing are removed and reinstalled during installation of the baseplate. Drilling is required. Trimming of the air dams and fascia is required.

The dimensional variations between otherwise identical vehicles can be considerable. While the baseplate was designed for easy installation, it may be necessary to tailor the baseplate slightly to compensate for auto manufacturer's tolerances. These minor adjustments may include filing a hole slightly, bending electrical rods or bending end plates.

The BX8869 Bulb and Socket Wiring Kit is recommended for this vehicle.



Possible Location for the BX8869 Bulb and Socket Wiring Kit.

Installation Instructions:



1. Using a 10MM socket, remove two bolts from the top of the black plastic cover above the radiator. Do this on both sides. Set bolts and cover aside to be reinstalled later.



2. Reach down underneath the corner of the headlight, push down on the clip on the corner of the grille and pull to release. Do this on both sides.

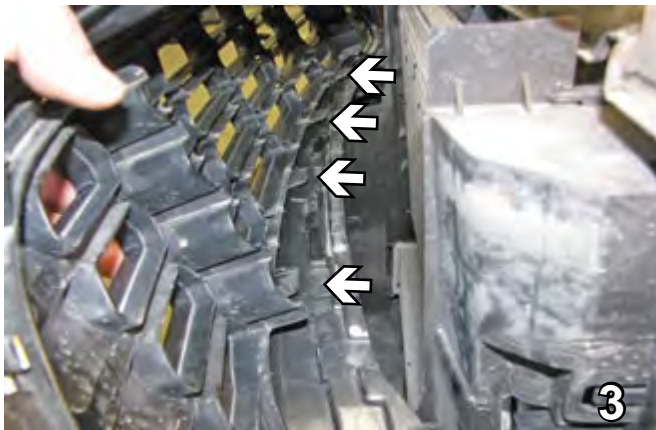
Handling of some cosmetic parts when installing this product may require the use of protective covers, rags, specialty tools, etc. to prevent damage.



BLUE OX

BX1308

2011-12 BMW Mini Cooper Countryman Installation Instructions



3. Using a flat screwdriver, push down on each of the four clips going across the bottom of the grille to release on the fender flare. Do this on both sides. Set the grille aside to be reinstalled later.



4. After the grille has been removed, use a T25 Torx to remove the bolt on the corner of the vehicle. Do this on both sides. Set the bolts aside to be reinstalled later.



5. Forward of the front tire, use a flat screwdriver to remove the bottom push pin (white arrow). Using an 8MM socket, remove the bolt above it (gray arrow). Do this on both sides. Set push pins and bolts aside for later reinstallation.



6. Forward of the front tire on the upper part of the wheel well, remove three push pins by pushing in on their center to release them on the fender flare. Do this to both sides. Set push pins aside for later reinstallation.

7. Reach up in behind the wheel well, push back on the three tabs to unlock from the fender flare. Do this to both sides.





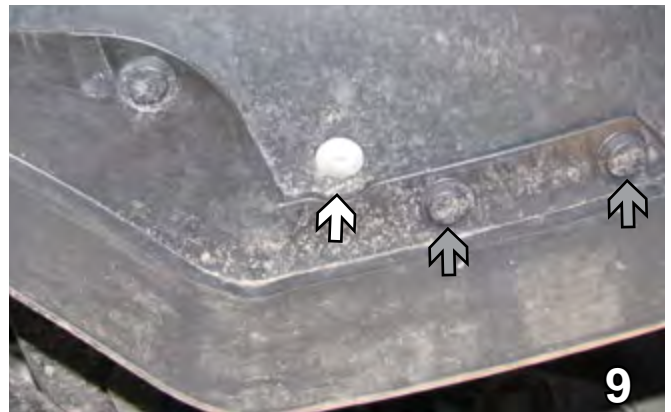
BLUE OX

BX1308

2011-12 BMW Mini Cooper Countryman Installation Instructions



8. Swing the fender flare out to reveal the screw. Using a T25 Torx, remove one screw. Do this to both sides. Set screws aside for later reinstallation.



9. Underneath the vehicle by the tire, using a T25 Torx, remove one bolt (white arrow). Using a flat screwdriver, remove the two push pins on the side (gray arrows). Do this to both sides. Set bolts and push pins aside for later reinstallation.



10. Underneath the fascia, remove three push pins across the center. Pull the fascia forward, disconnect side marker and foglights on both sides. Set push pins and fascia aside carefully to be reinstalled later.



11. Just forward of the wheel well on the driver side, remove the air induction tube (11A) by placing a flat screwdriver in opening and prying front section loose (11B white arrow). Set the tube aside to be reinstalled later.

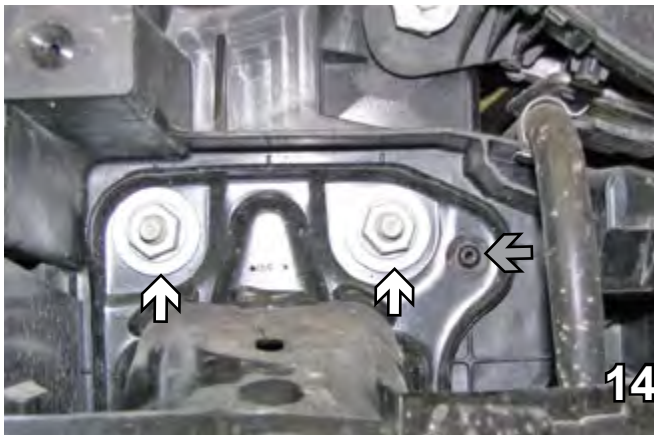




12. On the passenger side of front wheel well, using an 8MM socket, remove four screws from air induction tube. Remove induction tube just below bumper by pulling tube forward. This will allow for the bumper bolts to be removed later. Set the screws and tube aside to be reinstalled later.



13. On the passenger side under the bumper, pull toward the front of the vehicle to remove the air temperature sensor. It will be relocated later.



14. Using a 16MM socket, remove the two hex nuts from the top of the bumper (white arrows). Using a T20 Torx, remove the bolt on the side of the bracket (gray arrow). Do this on both sides. Set bolts aside to be reinstalled later.



15. Using a 16MM socket, remove one bolt from back side of the middle bumper bracket. Do this on both sides. Set bolts aside to be reinstalled later.

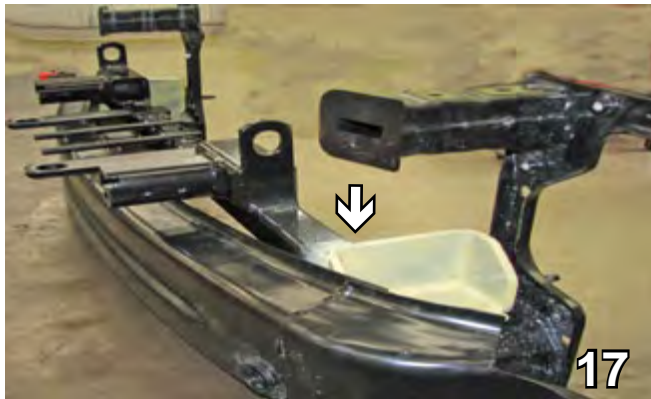
16. Using the T20 Torx, remove the two bolts from the bottom of the bumper bracket (gray arrows). Using a 13MM socket, remove two bolts (white arrows), from the backside of bracket. Do this on both sides. Set bolts and bumper aside to be reinstalled later.





BLUE OX

BX1308 2011-12 BMW Mini Cooper Countryman Installation Instructions



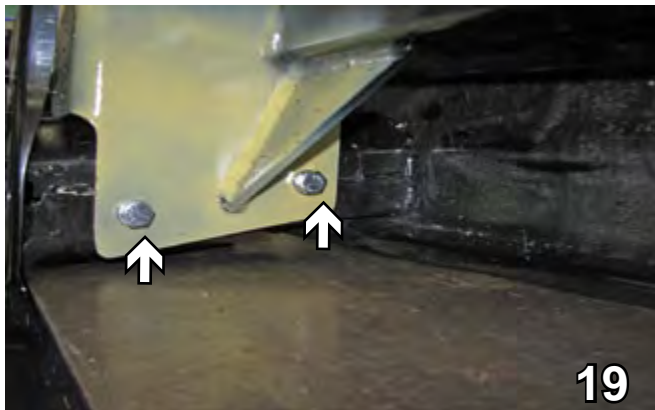
17. Set the bumper upside down on a table. Holding the baseplate upside down, insert the passenger side first (white arrow). Then slide the driver side into place on the bumper extension. The baseplate should be positioned as far forward as possible and clamp in place with the large vise grip.

Baseplate painted yellow for illustration. Actual baseplate will be powder-coat black.



18. Using the baseplate as a template, with the 13/32" drill bit, drill two holes on both sides of the baseplate (white arrows). Insert 1/4 x 1" x 1" nut plate into opening on back side of bumper to align with drilled holes (gray arrow). Then tighten with 3/8-16 x 1 1/4" hex bolts and 3/8" lock washers. Do this to both sides. Be sure to use Loctite Red on all the bolts.

When using power drills, be aware of the dangers of torque and drill bit length.



19. Using the baseplate as a template, with the 13/32" drill bit, drill the two holes on both sides of the baseplate. Insert 1/4 x 1" x 1" nut plates into opening on back side of bumper to align with drilled holes. Then tighten with 3/8-16 x 1 1/4" hex bolts and 3/8" lock washers. Do this to both sides. Be sure to use Loctite Red on all the bolts.



20. Using a utility knife, cut the air dams on both sides of the radiator. Start at the notch, cut straight across removing lower portion of air dam.

BE SURE TO USE LOCTITE® RED ON ALL BOLTS BEFORE TIGHTENING. TIGHTEN ALL BOLTS ACCORDING TO THE TORQUE CHART ON THE FRONT PAGE OF THESE INSTRUCTIONS OR ON PAGE 3 OF THE BASEPLATE TOWING GENERAL INSTRUCTIONS.



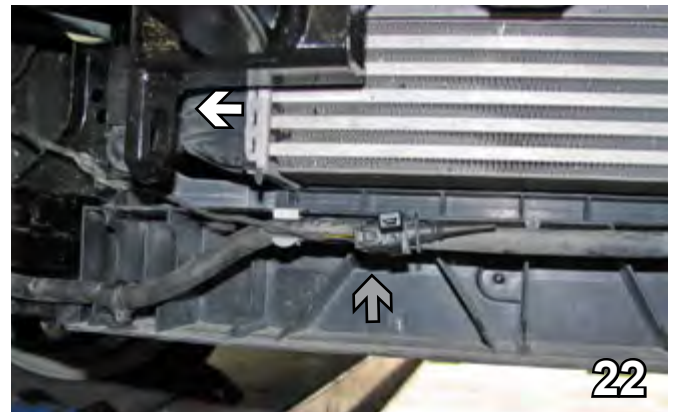
BLUE OX

BX1308

2011-12 BMW Mini Cooper Countryman Installation Instructions



21. Remove the washer tubing from the three clips holding it just below the radiator. Let it hang below while the baseplate is installed. It will be reattached later.



22. Reinstall the metal bumper with the baseplate (white arrow) using all the original hardware removed from the bumper. Reinstall the tubing below the radiator. On the passenger side, zip tie the temperature sensor to the tubing with two cable ties (gray arrow).



23. Attach the permanent baseplate safety cables to the provided convenience link on the baseplate (white arrow). The photo above shows the recommended installation of the cables to the frame of vehicle (gray arrow). Additional options may interfere with the suggested mounting. In this case, secure the cables to a solid piece of the frame as described in the instructions included with the permanent baseplate safety cables. Be sure the safety cables do not rub against any hoses or moving parts. Do this on both sides of the vehicle.



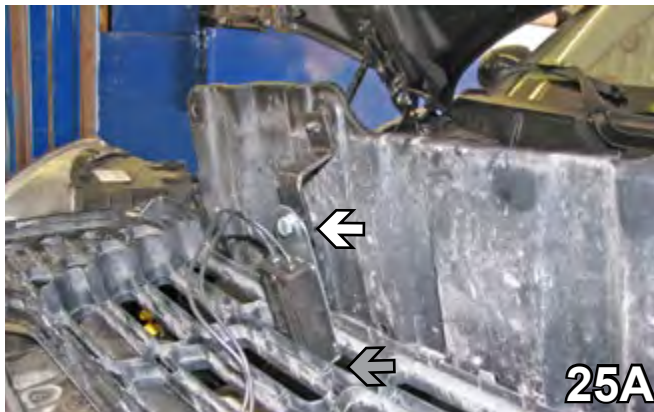
24. On the passenger side behind the tire well, using an 8MM socket reinstall the four screws reattaching the back part of the air induction tube to its original position. Snap back together the front part of the air induction tube on the driver side, restoring to its original position.



BLUE OX

BX1308

2011-12 BMW Mini Cooper Countryman Installation Instructions



25A. **Optional:** Attach the breakaway to the bracket with 1/4-20 x 3/4" hex bolt and 1/4-20 hex nut (white arrow). Insert the breakaway switch into the grille opening in line with the center bolt hole on the driver side (gray arrow). Reinstall the grille and the cover.



25B. Attach the breakaway bracket with an existing bolt inserted from the top of black plastic cover that was removed in step 1. Reinstall bolts, push pins and screws.



25C. The breakaway bracket as it appears on the driver side front of the vehicle.



26. Align the fascia to its original position. Using a utility knife, remove area around attachment tab receiver to allow for it to come through fascia (white arrows). Do this to both sides of the vehicle. Reinstall fascia and attach the electrical bracket to the fascia (gray arrow).

Install the tow bar and safety cables according to the instructions provided in their packages. When demonstrating to customer, be sure to include all original content and packages.

Do **NOT** substitute other devices if the tow bar pins and clips are misplaced.

Be sure that **ALL** electrical connections are plugged in properly and functioning **BEFORE** installing the fascia.



BLUE OX[®]

BX1308 2011-12 BMW Mini Cooper Countryman Installation Instructions

DEALER or INSTALLER:
Be certain the user receives the
instruction sheets for their products.



Shown without removable tabs installed.



Shown with removable tabs installed.

If the baseplate is in an accident, it must be replaced. **DO NOT** use it again! An accident can cause unseen damage and using it again could result in more damage or serious injury. **DO NOT** use the baseplate if it is damaged or missing parts.

CUSTOMER SERVICE COMMITMENT

Blue Ox is committed to providing you with exceptional customer care throughout your lifetime with our products. Our team is here to assist you with any questions you may have regarding the performance of your product. Simply call (402) 385-3051 and you can speak with our customer care team.

Additionally, please visit our website to see which rallies our Destination America team will be attending. For a nominal fee, our service technician will service your towing system to ensure it's in proper working condition. Also, as a commitment to our customers, should you visit our factory you can stay at our full service Blue Ox campground at no charge along with enjoying a factory tour.

Again, thank you for being our customer and for the confidence you have shown in the performance of our products. It is because of customers like you we enjoy the success we have today.



© 2011 Blue Ox
One Mill Road, Industrial Park
Pender, Nebraska 68047
Phone: (402) 385-3051 • Fax: (402) 385-3360
www.blueox.com