



BLUE OX®

Baseplate Installation Instructions

BX1510

2005-07 Buick Terraza

Installation Instructions

Serial Number

Please read BOTH these Installation Instructions and the General Towing Instructions before attempting to install or operate this equipment.

- Blue Ox® towing products and accessories are intended to be installed by Blue Ox® Dealers who are familiar with our products and have the equipment and knowledge to do "fit work". When necessary, Blue Ox® Dealers can be found at www.blueox.com or by contacting our Customer Care Department at (402) 385-3051.

Attachment Tab Height: 15.5"

Attachment Tab Width: 20"

- Many Blue Ox® Baseplates are designed to use existing holes and hardware to mount the baseplate to the towed vehicle. Even though bolts are there, do not assume they are adequate for baseplate mounting. Always use hardware supplied in the hardware kit or existing hardware specified in the Baseplate Installation Instructions.

Confirm the towability and pre-towing procedures for your vehicle with the owner's manual or contact the vehicle's manufacturer for specific towing procedures.



Bolt Torque Specifications

Torque in Foot-Pounds per Metric Bolts

Bolt Size	Grade 8.8	Grade 10.9
6MM	6	8
8MM	16	22
10MM	31	40
12MM	54	70
14MM	89	117

Bolt Torque Specifications

Torque in Foot-Pounds per Inch Bolts

Bolt Size	Grade 5	Grade 8
1/4"	10	14
5/16"	19	29
3/8"	33	47
7/16"	54	78
1/2"	78	119
5/8"	154	230

! WARNING

Failure to read and follow these instructions could result in separation of the towed vehicle from the tow bar, causing property damage, loss of towed vehicle, personal injury or death.

BX1510

2005-07 Buick Terraza

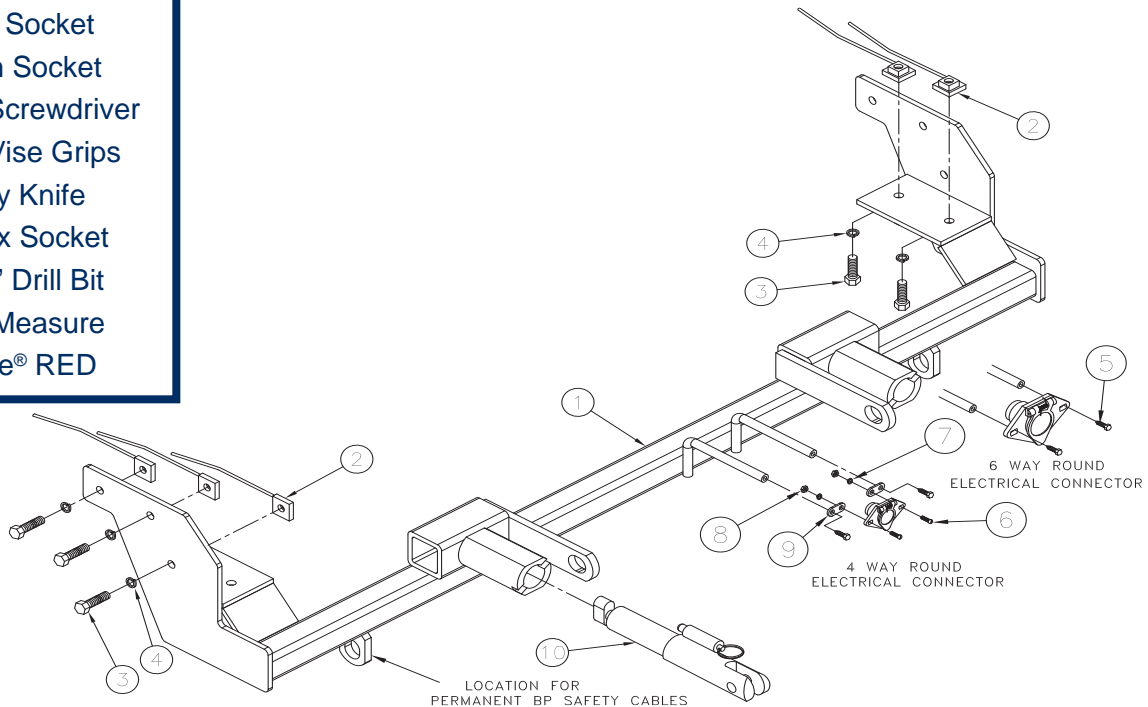
Installation Instructions

Parts List

Ref. No.	Qty.	Part #	Description
1	1	61-6240	Weldment, Baseplate, BX1510
2	10	61-5208	Weldment, 3/8" Nut Plate, w/ 14" Wire
3	10	201-0440	3/8-16 x 1 1/2" Hex Bolt, Grd. 5, ZP
4	10	203-0010	3/8" Lock Washer, ZP
5	2	201-0553	1/4-20 x 1/2" Hx. Wshd, Type F Screw
6	2	201-0192	#10-32 x 1/2" Slot, Rd. Hd. Screw
7	2	203-0054	#10 Lock Washer
8	2	202-0047	#10-32 Hex Nut
9	2	101-5822	Adapter, 4 Way Connector
10	2	62-3469	Attachment, Assembly, SF/SB (R)
	2	290-0437	Cap Plug, Black (Not Shown)
	2	229-0359	Quicklink, 3/8, ZP (Not Shown)
	2	226-0046	Baseplate Safety Cable, 36" CL III (Not Shown)

Tools Required

10mm Socket
 10mm Wrench
 9/16" Socket
 13mm Socket
 Phillips Screwdriver
 Large Vise Grips
 Utility Knife
 20 Torx Socket
 13/32" Drill Bit
 Tape Measure
 Loctite® RED



Important:

Use only genuine factory replacement parts on your baseplate. Do **NOT** substitute homemade or non-typical parts. If a bolt is lost or in need of replacement, for your safety and the preservation of your baseplate, be sure to use a replacement bolt of the same grade (In most cases it will be Grade 5, please reference the parts list above). Replacement parts may be ordered through your nearest Blue Ox® Dealer or Distributor.

BX1510
2005-07 Buick Terraza
Installation Instructions

Attachment Tabs:

Motorhome mount tow bars are recommended for use with this baseplate. Due to the design of the removable tabs, the RangeFinderII, Adventurer, and Ambassador two bars can not be used. The Acclaim tow bar may be used, but will not fold and store on the front of the vehicle. Adapters, except the BX8833 and BX88151, cannot be used with this baseplate.

Tow Bar Adapters are NOT to be used with vehicle's weighing over 5,000 lbs.

Installation Notes: The front fascia, horn brackets and metal bumper are removed for installation. Drilling is required. The air dam must be trimmed.

The dimensional variations between otherwise identical vehicles can be considerable. While the baseplate was designed for easy installation, it may be necessary to tailor the manufacturer's baseplate slightly to compensate for auto manufacturer's tolerances. These minor adjustments may include filing a hole slightly, bending electrical rods, and/ or bending end plates.

The BX8869 Bulb and Socket Wiring Kit is recommended for this vehicle.

Installation Instructions:



1. Remove the five pushpins from the top edge of the fascia, between the headlight assemblies. Set pushpins aside to be reinstalled later.

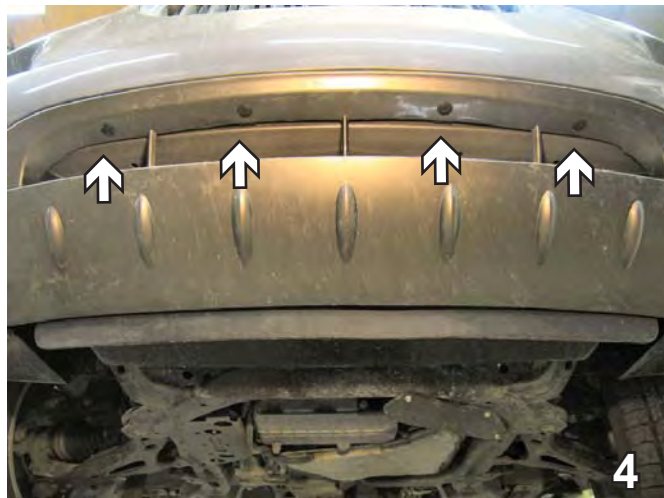


2. Just forward of the front tire, inside the wheel well, remove three Phillips screws. Do this to both sides of the vehicle. Set screws aside to be reinstalled later.

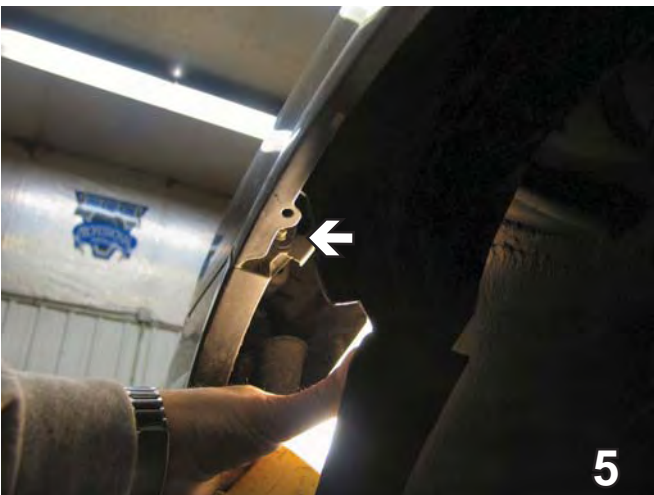
BX1510
2005-07 Buick Terraza
Installation Instructions



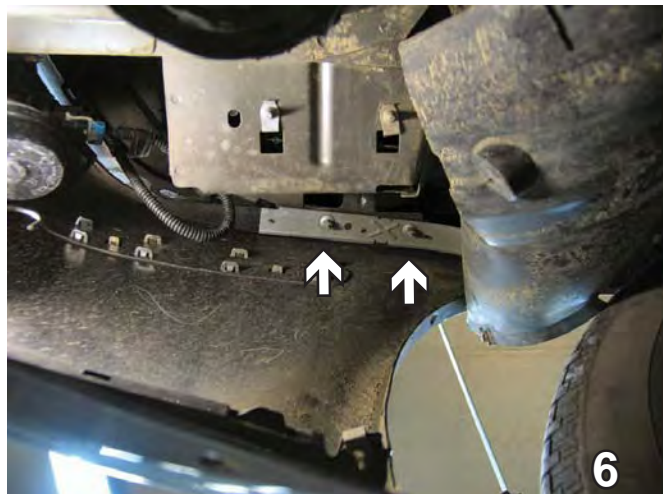
3. Just forward of the front tire, on the bottom edge of the fascia, remove two Phillips screws. Do this to both sides of the vehicle. Set screws aside to be reinstalled later.



4. Using the 20 Torx socket, remove four screws from underneath the center of the fascia. Set screws aside to be reinstalled later.



5. Just forward of front tire, pull the wheel well cover away from the fascia edge. Using the 10mm wrench, remove the hex nut from inside the front fender, just above the fascia. Do this to both sides of the vehicle. Set hex nuts aside to be reinstalled later.



6. Using the 10mm socket, loosen (do not remove) the two hex nuts found on the underside of the fascia, above the wheel well and below the fender. Do this to both sides of the vehicle.

BX1510
2005-07 Buick Terraza
Installation Instructions



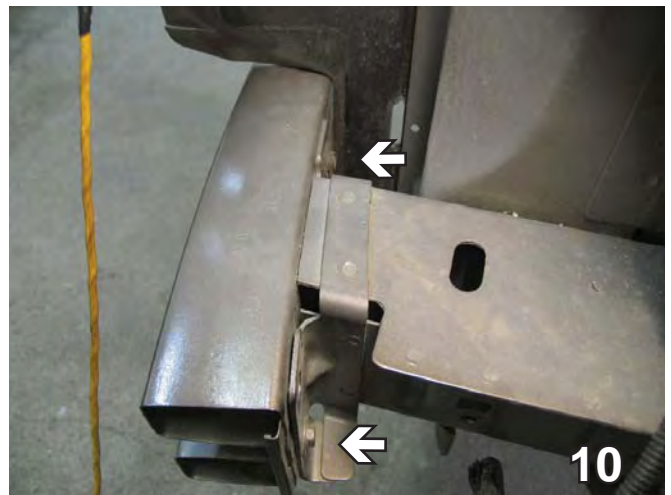
7. Pull the fascia corner forward, then downward, then forward again to release the pins. Do this to both sides of the vehicle. Set fascia aside to be reinstalled later.



8. Using the 13mm socket, remove the metric bolt from the horn bracket. Disconnect electrical. Do this to both sides of the vehicle. Set horn brackets and bolts aside to be reinstalled later.

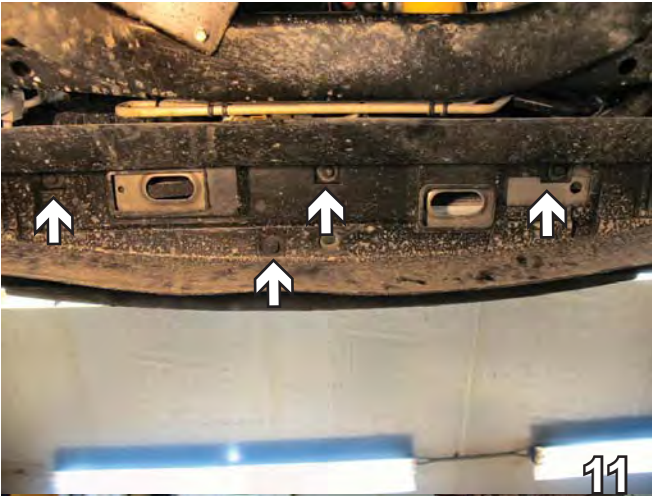


9. Using the utility knife, trim away the air dam around the soft rubber of the lower portion of the air dam, then upward to the metal bumper. Finish trimming with a horizontal cut flush with the bottom of the metal bumper. Do this to both sides of the vehicle. This will open up the area for baseplate installation.



10. Using the 13mm socket, remove two metric bolts from the back side of the metal bumper bracket. Do this to both sides of the vehicle. Pull metal bumper forward to remove. Set bolts and bumper aside to be reinstalled later.

BX1510
2005-07 Buick Terraza
Installation Instructions



11. Underneath the radiator support, use the 10mm socket to remove four metric bolts from the lower air dam. Remove the lower air dam. Set bolts and air dam aside to be reinstalled later.

BE SURE TO USE LOCTITE® RED ON ALL BOLTS BEFORE TIGHTENING. TIGHTEN ALL BOLTS ACCORDING TO THE TORQUE CHART ON THE FRONT PAGE OF THESE INSTRUCTIONS OR ON PAGE 3 OF THE BASEPLATE GENERAL TOWING INSTRUCTIONS.



12. Position the baseplate against the bottom of the frame rail. Align the lower hole of the baseplate endplate with the lower existing hole in the driver's side of the frame (see arrow in photo) while maintaining a level position on the passenger's side. Clamp the baseplate into place with the large vise grips.



13. Using the baseplate as a template, drill the two holes into the underside of the frame with the 13/32" drill bit. Insert the 3/8-16 nut plates into the frame rail and align with the drilled holes. Install the 3/8-16 x 1 1/2" hex bolts and 3/8" lock washers to the baseplate and tighten to the nut plates using the 9/16" socket. Do this to both sides of the vehicle.



14. Using the baseplate as a template, drill the three endplate holes into the frame using the 13/32" drill bit. Do this to both sides of the vehicle.

BX1510
2005-07 Buick Terraza
Installation Instructions



15. Insert the 3/8-16 nut plates into the frame rail and align with the drilled holes. Install the 3/8-16 x 1 1/2" hex bolts and 3/8" lock washers to the baseplate and tighten to the nut plates using the 9/16" socket. Do this to both sides of the vehicle.



16. Attach the permanent baseplate safety cables to the provided convenience link on the baseplate (see grey arrow). The photo above shows the recommended installation of the permanent baseplate safety cables to frame of the vehicle (see white arrow). If the vehicle has additional options, not shown above, which interfere with mounting the permanent baseplate safety cables, secure the cable to a solid piece of the vehicle's frame as described in the instructions included with the permanent baseplate safety cables.

BE SURE TO USE LOCTITE® RED ON ALL BOLTS BEFORE TIGHTENING. TIGHTEN ALL BOLTS ACCORDING TO THE TORQUE CHART ON THE FRONT PAGE OF THESE INSTRUCTIONS OR ON PAGE 3 OF THE BASEPLATE GENERAL TOWING INSTRUCTIONS.

17. Reinstall the horn brackets, the metal bumper, and the fascia. Insure all pushpins, screws, bolts, and electrical connections are installed.
NOTE: When reinstalling the horn, verify that it is not touching any metal surface or it may not function properly.

Install the tow bar and safety cables according to the instructions provided in their packages. When demonstrating this to the customer, be sure to include all the contents and packages.

Do **NOT** substitute other devices if the tow bar pins and clips are misplaced.

Be sure that **ALL** electrical connections are plugged in properly and functioning **BEFORE** installing the fascia.

DEALER or INSTALLER:

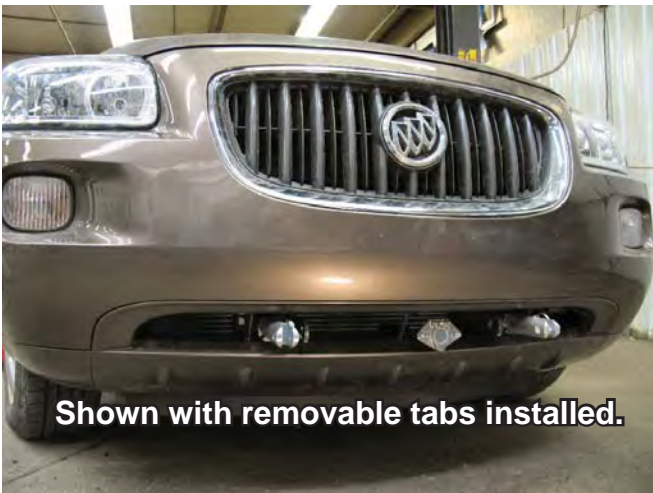
Be certain the user receives the instruction sheets for their products.

BX1510
2005-07 Buick Terraza
Installation Instructions



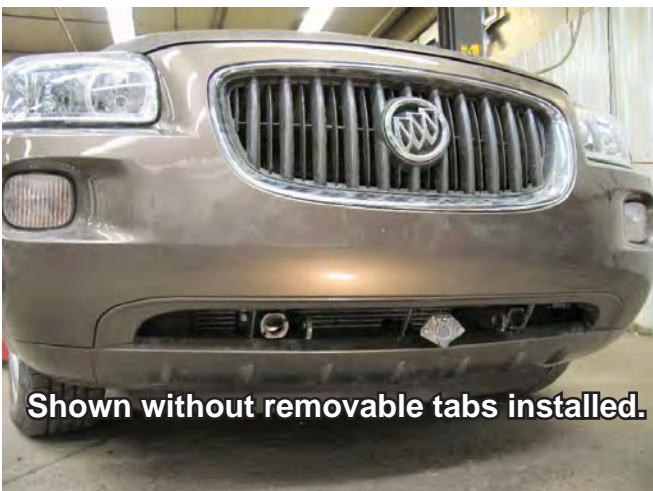
CUSTOMER SERVICE COMMITMENT

Blue Ox is committed to providing you with exceptional customer care throughout your lifetime with our products. Our team is here to assist you with any questions you may have regarding the performance of your product. Simply call 1-800-228-9289 and you can speak with our customer care team.



Additionally, please visit our website to see which rallies our Destination America team will be attending. For a nominal fee, our service technician will service your towing system to ensure it's in proper working condition. Also as a commitment to our customers, should you visit our factory you can stay at our full service Blue Ox campground at no charge along with enjoying a factory tour.

Again thank you for being our customer and for the confidence you have shown in the performance of our products. It is because of customers like you we enjoy the success we have today.



© 2006, 07, 09 Blue Ox
One Mill Road, Industrial Park
Pender, Nebraska 68047
Phone: (402) 385-3051 • Fax: (402) 385-3360
www.blueox.com