

Please read **BOTH** these Installation Instructions and the General Towing Instructions before attempting to install or operate this equipment.

- Blue Ox® towing products and accessories are intended to be installed by Blue Ox® Dealers who are familiar with our products and have the equipment and knowledge to do “fit work”. When necessary, Blue Ox® Dealers can be found at www.blueox.com or by contacting our Customer Care Department at (402) 385-3051.
- Many Blue Ox® Baseplates are designed to use existing holes and hardware to mount the baseplate to the towed vehicle. Even though bolts are there, do not assume they are adequate for baseplate mounting. Always use hardware supplied in the hardware kit or existing hardware specified in the Baseplate Installation Instructions.

Attachment Tab Height: 14”

Attachment Tab Width: 24”

Bolt Torque Specifications

Torque in Foot-Pounds for Metric Bolts

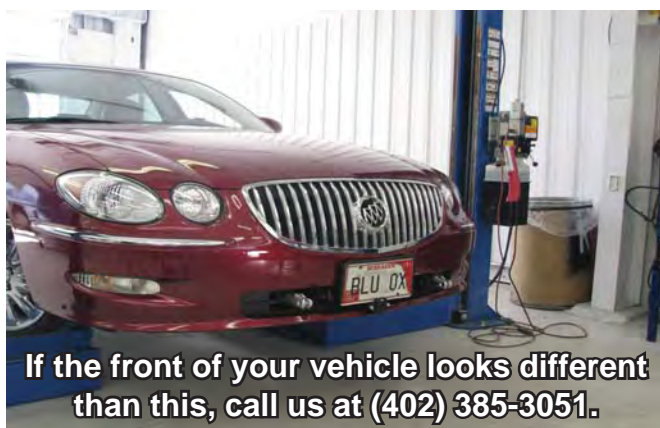
| Bolt Size | Grade 8.8 | Grade 10.9 |
|-----------|-----------|------------|
| 6MM | 6 | 8 |
| 8MM | 16 | 22 |
| 10MM | 31 | 40 |
| 12MM | 54 | 70 |
| 14MM | 89 | 117 |

Confirm the towability and pre-towing procedures for your vehicle with the owner’s manual or contact the vehicle’s manufacturer for specific towing procedures.

Bolt Torque Specifications

Torque in Foot-Pounds for Inch Bolts

| Bolt Size | Grade 5 | Grade 8 |
|-----------|---------|---------|
| 1/4” | 10 | 14 |
| 5/16” | 19 | 29 |
| 3/8” | 33 | 47 |
| 7/16” | 54 | 78 |
| 1/2” | 78 | 119 |
| 5/8” | 154 | 230 |



If the front of your vehicle looks different than this, call us at (402) 385-3051.

⚠ WARNING

Failure to read and follow these instructions could result in separation of the towed vehicle from the tow bar, causing property damage, loss of towed vehicle, personal injury or death.

BX1514

2008-09 Buick LaCrosse

Installation Instructions

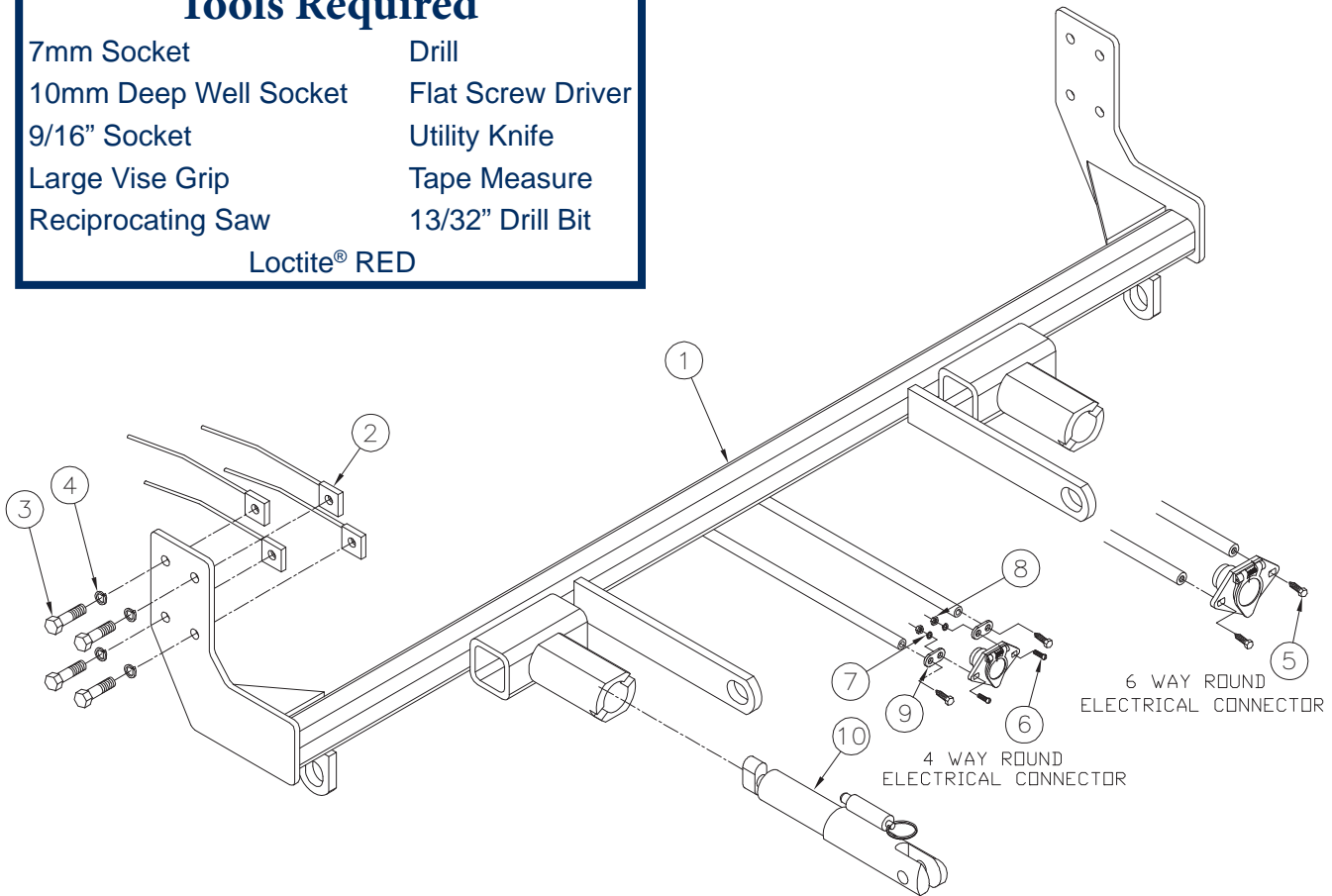
Parts List

| Ref. No. | Qty. | Part # | Description |
|----------|------|----------|--|
| 1 | 1 | 61-6664 | Weldment, Base Plate, BX1670 |
| 2 | 8 | 61-5208 | 3/8" Nut Plate, with Wire |
| 3 | 8 | 201-0440 | 3/8-16 x 1 1/2" Hex Bolt, Grd. 5, ZP |
| 4 | 8 | 203-0010 | 3/8" Lock Washer, ZP |
| 5 | 2 | 201-0553 | 1/4-20 x 1/2" Hx, Wshd, Type F Screw |
| 6 | 2 | 201-0192 | #10-32 x 1/2" Slot, Rd. Hd. Screw |
| 7 | 2 | 203-0054 | #10 Lock Washer |
| 8 | 2 | 202-0047 | #10-32 Hex Nut |
| 9 | 2 | 101-5822 | Adapter, 4 Way Connector |
| 10 | 2 | 62-3469 | Attachment, Assembly, SF/LB (R) |
| | 2 | 226-0046 | Baseplate Safety Cable, 36" CL III (Not Shown) |
| | 2 | 229-0359 | Quicklink, 3/8, ZP (Not Shown) |
| | 2 | 290-0437 | Cap Plugs, Black (Not Shown) |

Tools Required

| | |
|-----------------------|-------------------|
| 7mm Socket | Drill |
| 10mm Deep Well Socket | Flat Screw Driver |
| 9/16" Socket | Utility Knife |
| Large Vise Grip | Tape Measure |
| Reciprocating Saw | 13/32" Drill Bit |

Loctite® RED



Important:

Use only genuine factory replacement parts on your baseplate. Do **NOT** substitute homemade or non-typical parts. If a bolt is lost or in need of replacement, for your safety and the preservation of your baseplate, be sure to use a replacement bolt of the same grade (In most cases it will be Grade 5, please reference the parts list above). Replacement parts may be ordered through your nearest Blue Ox® Dealer or Distributor. Failing to follow and/or altering these installation instructions in either installation or required equipment will void the manufacturer's warranty. Towing behind a non-motorized vehicle will void the warranty.

BX1514
2008-09 Buick LaCrosse
Installation Instructions

Attachment Tabs:

Due to the design of the removable tabs, the RangeFinderII tow bar can not be used. Adapters, except the BX8833 and BX88151, can not be used with this baseplate.

Installation Notes: The fascia, belly pan, horn and air dams are removed for installation. Air dams are not reinstalled. The bumper bracket, belly pan and grille are trimmed. Drilling is required.

The dimensional variations between otherwise identical vehicles can be considerable. While the baseplate was designed for easy installation, it may be necessary to tailor the baseplate slightly to compensate for auto manufacturer's tolerances. These minor adjustments may include filing a hole slightly, bending electrical rods or bending end plates.

The BX8869 Bulb and Socket Wiring Kit is recommended for this vehicle.



**Possible Location for the BX8869
Bulb and Socket Wiring Kit.**

Installation Instructions:



1. Remove two push pins from the top of the plastic cover. Set cover and push pins aside to be reinstalled later.



2. Remove four push pins from the top of the fascia. Set push pins aside to be reinstalled later.

Handling of some cosmetic parts when installing this product may require the use of protective covers, rags, specialty tools, etc. to prevent damage.

BX1514
2008-09 Buick LaCrosse
Installation Instructions



3. Remove the push pin from between the headlights. Do this to both sides of the vehicle. Set push pins aside to be reinstalled later.



4. Using the 7mm socket, remove two metric bolts from just inside wheel well in front of the tire on the edge of the fascia. Do this to both sides of the vehicle. Set bolts aside to be reinstalled later.

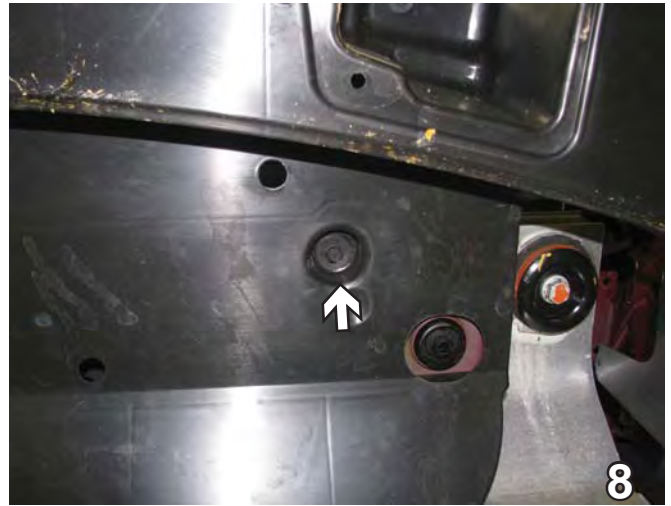
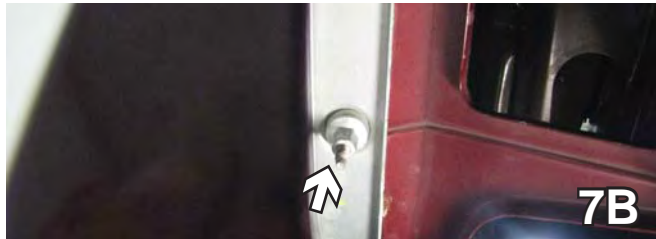


5. Using the 7mm socket, remove two metric bolts from underside of fascia, just forward of front tire. Do this to both sides of the vehicle. Set bolts aside to be reinstalled later.



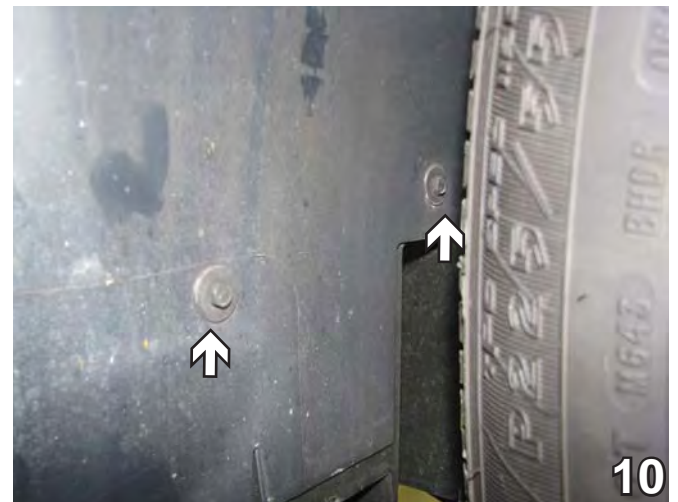
6. Remove three push pins from bottom corner of fascia. Do this to both sides of the vehicle. Set push pins aside to be reinstalled later.

BX1514
2008-09 Buick LaCrosse
Installation Instructions



7. Just forward of the front tire push the wheel well cover aside, using the 10mm socket, loosen two metric bolts. Do this to both sides of the vehicle. Pull fascia forward to remove. Set bolts and fascia aside carefully to be reinstalled later.

8. Using the 10mm socket, remove three metric bolts from across the bottom of the belly pan underneath the bumper. Set bolts aside to be reinstalled later.



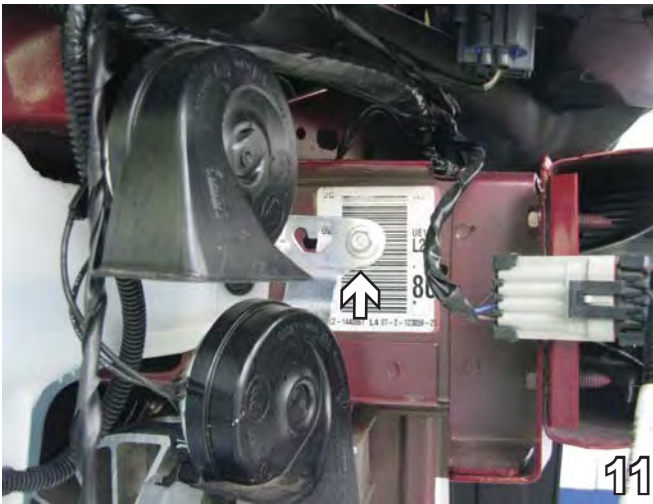
9. Remove two push pins from the belly pan extensions one on each side. Set push pins aside to be reinstalled later.

10. Just forward of the front tire, on the wheel well using the 7mm socket, remove two bolts. Pull forward on the center extension to remove the belly pan. Set belly pan and bolts aside to be reinstalled later.

BX1514

2008-09 Buick LaCrosse

Installation Instructions



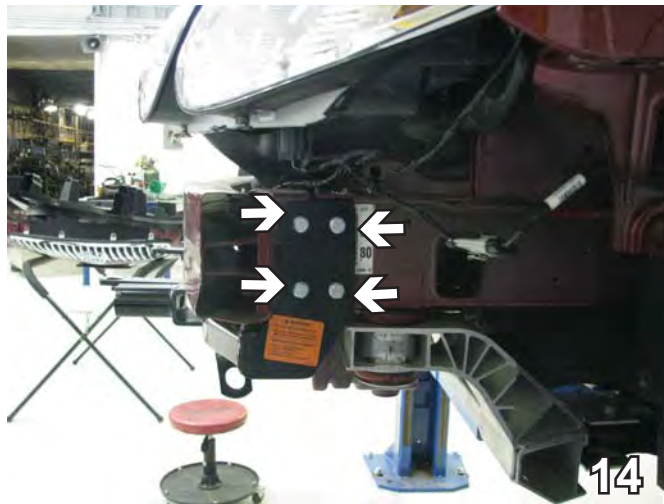
11. On the passenger side, using the 10mm socket, remove one metric bolt from the horn bracket. Set the horn and bolt aside to be reinstalled later.



12. Using the reciprocating saw, mark and cut the bottom of the bumper bracket so that it is flush with the bottom of the frame rail. Do this to both sides of the vehicle.



13. Align the baseplate with the webbing at the top of the frame rail and the contour on the back edge of the frame rail. Clamp in place with the vise grips. Using the baseplate as a template with the 13/32" drill bit, drill the lower left hole (gray arrow). Be sure the baseplate is level with the frame. Drill the remaining three holes. Do this to both sides of the vehicle.

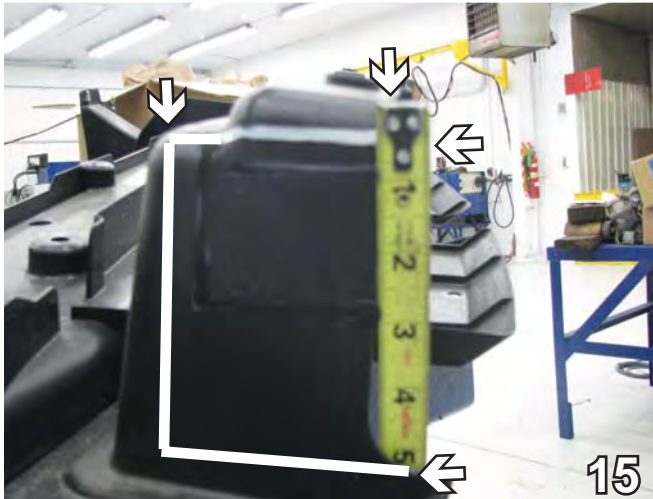


14. Insert 3/8-16 nut plates through opening in side of frame rail. Align to drilled holes. Install 3/8-16 x 1 1/2" hex bolts with 3/8" lock washers and tighten to nut plates. Be sure to use loctite on all bolts. Trim excess nut plate wires. Do this to both sides of the vehicle.

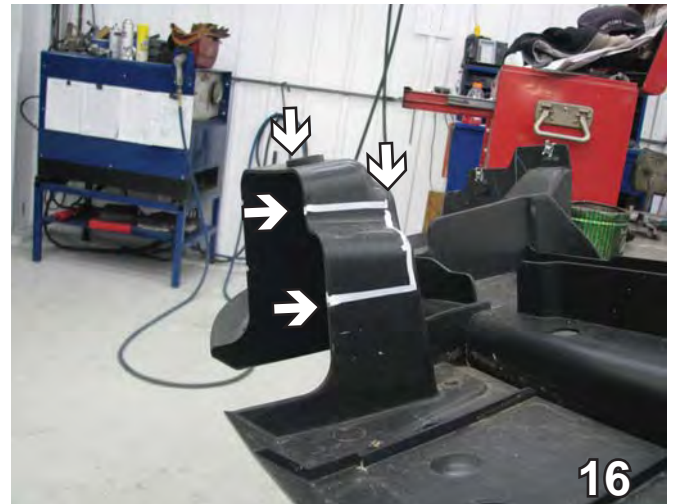
When using power drills be aware of the dangers of torque and drill bit length.

BE SURE TO USE LOCTITE® RED ON ALL BOLTS BEFORE TIGHTENING. TIGHTEN ALL BOLTS ACCORDING TO THE TORQUE CHART ON THE FRONT PAGE OF THESE INSTRUCTIONS OR ON PAGE 3 OF THE BASEPLATE TOWING GENERAL INSTRUCTIONS.

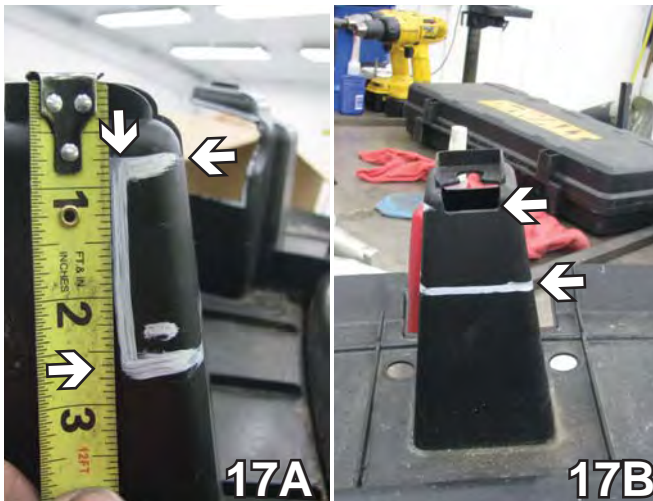
BX1514
2008-09 Buick LaCrosse
Installation Instructions



15. Remove the two air dams from the belly pan. The air dams will not be reinstalled. Hold belly pan up to its original position and mark the area where the back of the belly pan extensions meet the cross tube of the baseplate. Lay the belly pan on a smooth flat surface and, using the utility knife, cut the marked area. It will measure approximately, 1/2" down from the top, straight across the bottom 3 1/4" and up. Do this on both outside corners.



16. On the inside corners go down 1", using the utility knife, cut 2 1/2" back and 3" down. Do this on both inside corners.



17. On the center extension, measure down 3/4", using the utility knife cut around the top, 2 1/2" down and straight across.



18. Remount the horn bracket, using a self tapping screw.

BX1514
2008-09 Buick LaCrosse
Installation Instructions



19. On the back side of the fascia, using a utility knife cut off the knobs on the bottom of the styrofoam. Do this on both sides.



20. Align the fascia to its original position and, using the hack saw blade, trim necessary openings in the grille for the attachment tabs. Do this to both sides of the vehicle.



21. On the back side of the fascia in the same area as photo 19, cut the whole lower section off 1 1/2" flush with the bottom of the styrofoam. Do this on both sides.



22. Attach the permanent baseplate safety cables to the provided convenience link on the baseplate (see grey arrow). The photo above shows the recommended installation of the permanent baseplate safety cables to frame of the vehicle (see white arrow). Additional options may interfere with suggested mounting, in this case secure the cable to a solid piece of the frame as described in the instructions included with the permanent baseplate safety cables. Be sure the safety cables do not rub against any hoses or moving parts.

Install the tow bar and safety cables according to the instructions provided in their packages. When demonstrating this to the customer, be sure to include all the contents and packages.

Do **NOT** substitute other devices if the tow bar pins and clips are misplaced.

BX1514
2008-09 Buick LaCrosse
Installation Instructions

Be sure that **ALL** electrical connections are plugged in properly and functioning **BEFORE** installing the fascia.

DEALER or INSTALLER:

Be certain the user receives the instruction sheets for their products.



Shown without removable tabs installed.



Shown with removable tabs installed.

If the baseplate is in an accident, it must be replaced. **DO NOT** use it again! An accident can cause unseen damage and using it again could result in more damage or serious injury. **DO NOT** use the baseplate if it is damaged or missing parts.

CUSTOMER SERVICE COMMITMENT

Blue Ox is committed to providing you with exceptional customer care throughout your lifetime with our products. Our team is here to assist you with any questions you may have regarding the performance of your product. Simply call 1-800-228-9289 and you can speak with our customer care team.

Additionally, please visit our website to see which rallies our Destination America team will be attending. For a nominal fee, our service technician will service your towing system to ensure it's in proper working condition. Also as a commitment to our customers, should you visit our factory you can stay at our full service Blue Ox campground at no charge along with enjoying a factory tour.

Again thank you for being our customer and for the confidence you have shown in the performance of our products. It is because of customers like you we enjoy the success we have today.



© 2009, 10 Blue Ox
One Mill Road, Industrial Park
Pender, Nebraska 68047
Phone: (402) 385-3051 • Fax: (402) 385-3360
www.blueox.com