



**BLUE OX®**

# BX1836 2005-12 Nissan Xterra Installation Instructions

Baseplate Installation Instructions

Serial Number

**Please read BOTH these Installation Instructions and the General Instructions before attempting to install or operate this equipment.**

1. Blue Ox® towing products and accessories are intended to be installed by Blue Ox® Dealers who are familiar with our products and have the necessary equipment and knowledge to do "fit work". When necessary Blue Ox® Dealers can be found at [www.blueox.com](http://www.blueox.com) or by contacting our Customer Care Department at (402) 385-3051.
2. Many Blue Ox® baseplates are designed to use existing holes and hardware to mount the baseplate to the towed vehicle. Even though bolts are there, do not assume they are adequate for baseplate mounting. Always use hardware supplied in the hardware kit and existing hardware specified in the Baseplate Installation Instructions.

Attachment Tab Height: 16"

Attachment Tab Width: 24"

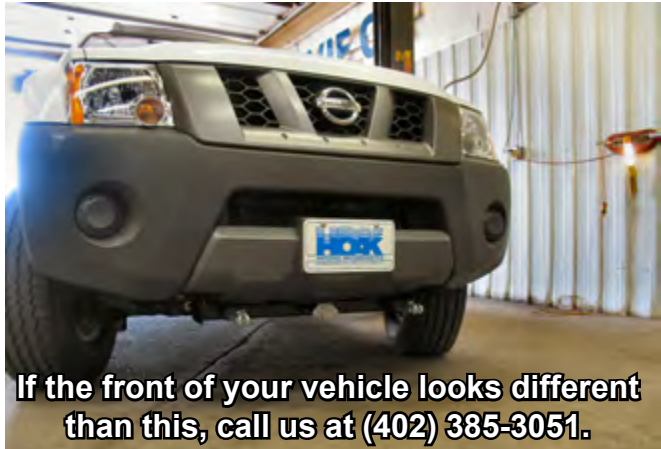
**Bolt Torque Specifications**  
Torque in Foot-Pounds for Metric Bolts

Bolt Size	Grade 8.8	Grade 10.9
6MM	6	8
8MM	16	22
10MM	31	40
12MM	54	70
14MM	89	117

Confirm the towability and pre-towing procedures for your vehicle with the owner's manual or contact the vehicle's manufacturer for specific towing procedures.

**Bolt Torque Specifications**  
Torque in Foot-Pounds for Inch Bolts

Bolt Size	Grade 5	Grade 8
1/4"	10	14
5/16"	19	29
3/8"	33	47
7/16"	54	78
1/2"	78	119
5/8"	154	230



**If the front of your vehicle looks different than this, call us at (402) 385-3051.**

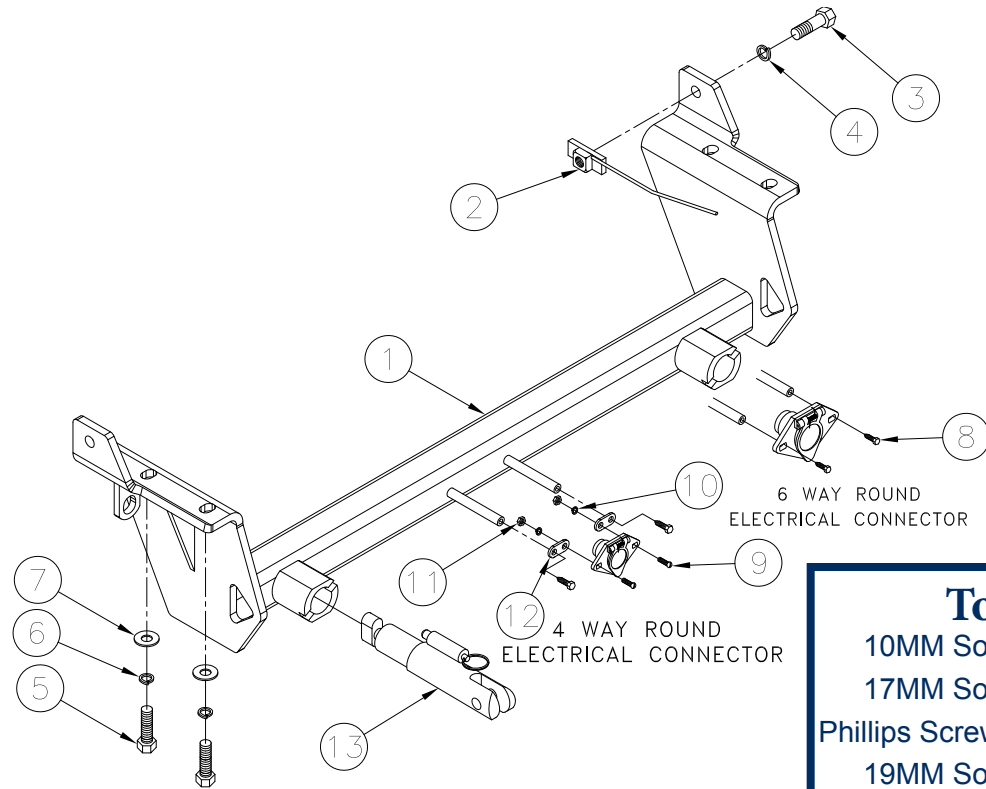
**! WARNING**

Failure to read and follow these instructions could result in separation of the towed vehicle from the tow bar, causing property damage, loss of towed vehicle, personal injury or death.

# BX1836 2005-12 Nissan Xterra Installation Instructions

## Parts List

Ref.No.	Qty.	Part #	Description
1	1	61-6161	Weldment, Baseplate, BX1836
2	2	61-3799	Weldment, 1/2"-13 Nut Plate, w/ 10" Wire
3	2	201-0051	1/2"-13 x 1 1/2" Hex Bolt, Grd. 5, ZP
4	2	203-0012	1/2" Lock Washer, ZP
5	4	201-0603	12MM-1.25 x 45MM Hex Bolt, Grd. 8.8, ZP
6	4	203-0105	12MM Lock Washer, ZP
7	4	203-0005	1/2" Flat Washer, ZP
8	2	201-0053	1/4"-20 x 1/2" Hx. Wshd, Type F Screw
9	2	201-0192	#10-32 x 1/2" Slot, Rd. Hd. Screw
10	2	203-0054	#10 Lock Washer
11	2	202-0047	#10-32 Hex Nut
12	2	101-5822	Adapter, 4 Way Connector
13	2	62-3468	Attachment, Assembly, SF/SB (R)
	2	226-0049	Baseplate Safety Cable, 36" CL IV (NS)
	4	229-0512	Quicklink, 1/2, ZP (Not Shown)
	2	290-0437	Cap Plug, Black (Not Shown)



## Tools Required

10MM Socket	Loctite Red
17MM Socket	Reciprocating Saw
Phillips Screw Driver	34" Socket
19MM Socket	1 1/4" Hole Saw

## Important:

Use only genuine factory replacement parts on your baseplate. Do NOT substitute homemade or non-typical parts. If a bolt is lost or in need of replacement, for your safety and the preservation of your baseplate, be sure to use a replacement bolt of the same grade. In most cases it will be Grade 5-please reference the parts list above. Replacement parts may be ordered through your nearest Blue Ox® dealer or distributor, or call our Customer Care Team at (402)385-3051. Failing to follow and/or altering these installation instructions in either installation or required equipment will void the manufacturer's warranty.

# BX1836 2005-12 Nissan Xterra Installation Instructions

## Attachment Tabs:

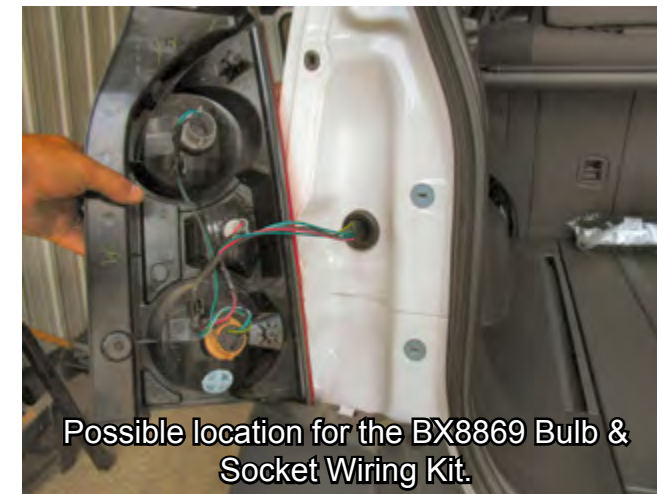
Due to the design of the removable tabs, the RangeFinderII tow bar can not be used. Adapters, except the BX8833 and BX88151, can not be used with this baseplate.

## Instructions:

The front fascia, fascia brace and metal bumper are removed for the baseplate installation. Drilling is required.

Some vehicles bellypan may need trimming. The dimensional variations between otherwise identical vehicles can be considerable. Although the baseplate was designed for easy installation, it may be necessary to tailor the baseplate slightly to compensate for auto manufacturer's tolerances. These minor adjustments may include filing a hole slightly, bending electrical rods or bending end plates.

The Bx8869 Bulb and Socket Wiring Kit is recommended for this vehicle.



Handling of some cosmetic parts when installing this product may require the use of protective covers, rags, specialty tools, etc. to prevent damage.

## Installation Instructions:



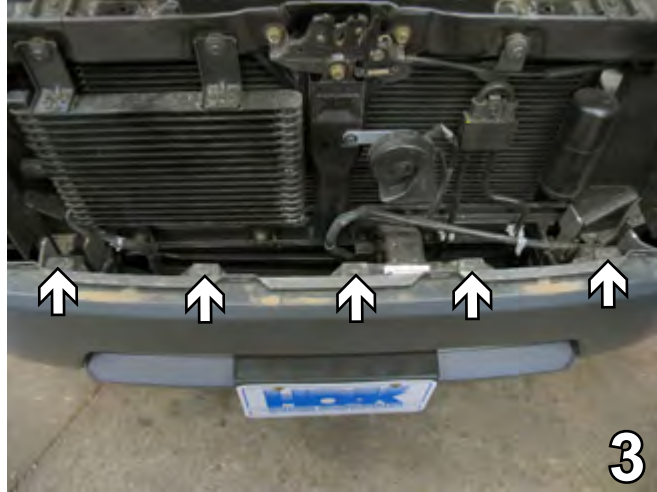
1. Remove the three pushpins on the front fascia near the headlight housing. Set aside to be reinstalled later. Do this on both sides. The passenger's side is shown in the picture above.



2. Pull the fascia forward in order to release the clip on the back. Pull up and release four clips along the bottom of the front fascia. Set the fascia aside carefully. Do this on both sides of the fascia. The driver's side is shown in the picture above.



BX1836  
2005-12 Nissan Xterra  
Installation Instructions



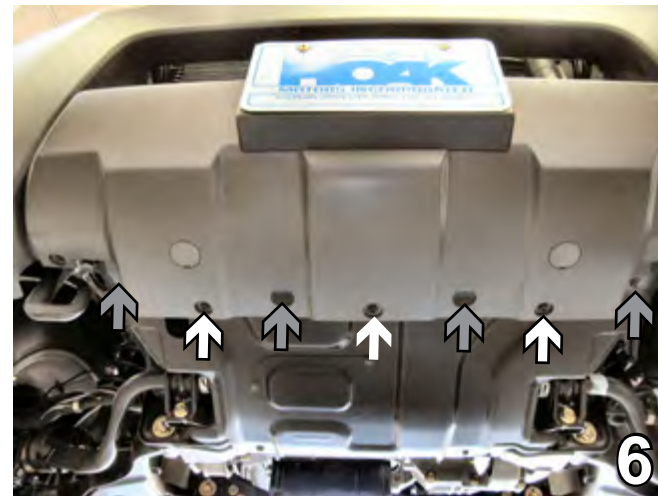
3. Remove five pushpins from the front grill. Set them aside because they will need to be reinstalled later.



4. Just forward of the front tires on the edge of the front fascia, remove two Phillips screws. Set aside to be reinstalled later. Do this on both sides of the vehicle. The driver's side is shown.

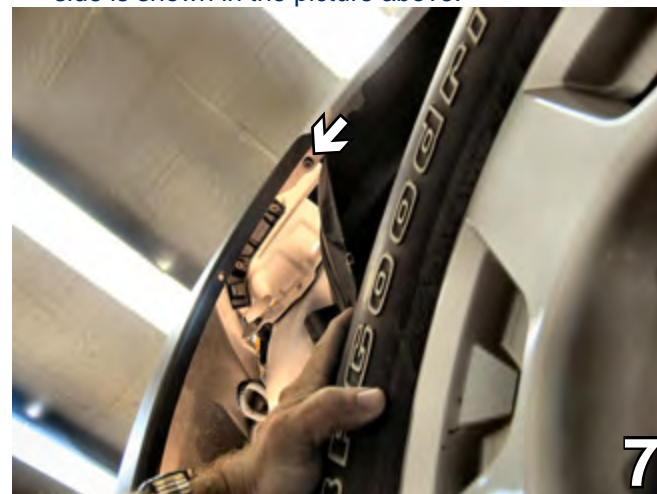


5. Remove two Phillips screws from the bottom edge of the front fascia. Set aside to be re-installed later. Do this on both sides of the vehicle. The driver's side is shown in the picture above.

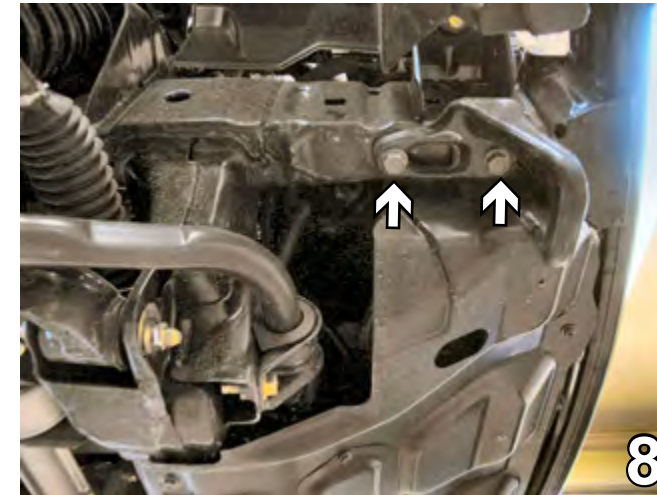


6. Underneath the front fascia remove three 10MM bolts (white arrows). Set aside to be reinstalled later. Remove four metric bolts that attach the tabs to the bellypan (gray arrows). Set aside to be reinstalled later.

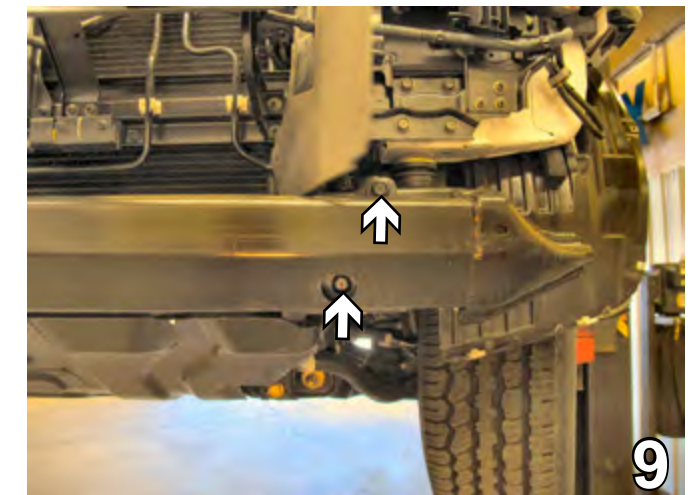
7. Pull back the wheel well plastic from inside the wheel well and remove the metric bolt on the edge of the fascia. Set aside to be re-installed later. Do this is on both sides of the vehicle. The driver's side is shown in the picture above. Pull forward and set the front fascia aside carefully.



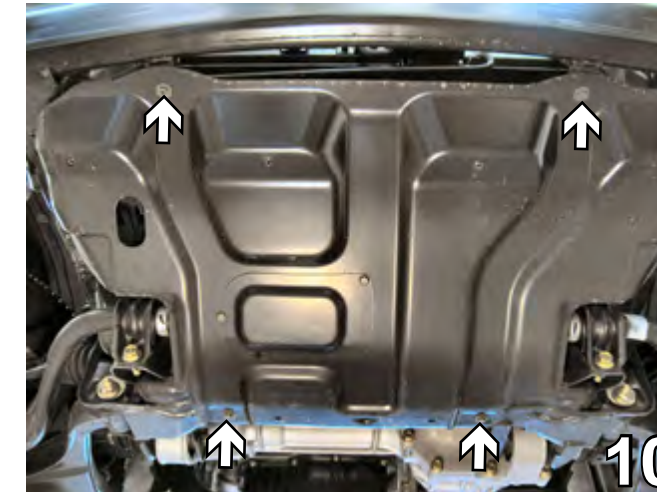
BX1836  
2005-12 Nissan Xterra  
Installation Instructions



8. Using a 17MM socket, remove the 17MM bolts from the tow bracket. Do this on both sides of the vehicle, the driver's side is shown. They will not be reinstalled on the vehicle. Please be sure the customer receives them.



9. Use a 17MM Socket to remove the bolts from the metal bumper. Set aside to be re-installed. Do this on both sides of the vehicle. The driver's side is shown. Pull metal bumper forward and set it aside as well.



10. Remove four metric bolts from the bottom of the belly pan to release the belly pan. Set it and the bolts aside to be reinstalled.



11. Measure down from the top of the frame rail 1 3/4" and center from side to side. Using the 1 1/4" Hole Saw, drill a hole in the frame rail on both sides. The arrow in the picture above illustrates where to drill the hole. Do this on both sides of the vehicle, the driver's side is shown.

**The photos for this baseplate installation show that the baseplate is painted white. This is just for illustrative purposes. The actual baseplate has a black powder-coat finish.**



BX1836  
**2005-12 Nissan Xterra**  
 Installation Instructions



12



13

12. Insert the 12MM hex bolts (201-0603), 12MM Lock Washer (203-0105), and the 1/2" Flat Washer (203-0005) into the existing holes. Do this on both sides of the vehicle, the driver's side is shown.

13. Using the baseplate as a template, drill the holes with the 17/32" drill bit. Insert the nutplate (61-3799) into the frame rail and attach 1/2"-13 x 1 1/2" Hex Bolt (201-0051) and 1/2" lock washer (203-0051). This is done on both sides of the vehicle the passenger's side is shown.

**\*\*BE SURE TO USE LOCTITE® RED ON ALL BOLTS BEFORE TIGHTENING. TIGHTEN ALL BOLTS ACCORDING TO THE TORQUE CHART ON THE FRONT PAGE OF THESE INSTRUCTIONS OR ON PAGE 3 OF THE BASEPLATE TOWING GENERAL INSTRUCTIONS.**

**When using power drills be aware of the dangers of torque and drill bit length.**

**Be sure that ALL electrical connections are plugged in properly and functioning BEFORE Installing the fascia.**



14

14. The bellypan requires some trimming as indicated in the illustration above. Use the reciprocating saw, follow the contour. The outside measurement needs to be less than 30 1/4 inches, so that the belly pan can be installed. Do this to both sides of the front fascia, the passenger's side is shown.

15. Install the metal bumper, bellypan, and front fascia according to the directions on the previous pages (Steps 1-10).

16. Install the tow bar and safety cables according to the instructions when demonstrating this to the customer. Be sure to include all the contents and packages.

17. Do **NOT** substitute other devices if the tow bar pins and clips are misplaced.

BX1836  
**2005-12 Nissan Xterra**  
 Installation Instructions

**DEALER or INSTALLER:**  
 Be certain the user receives all of the technical documentation for all of their products.

**CUSTOMER SERVICE COMMITMENT**



Without removable tabs installed.



With removable tabs installed.

Blue Ox is committed to providing you with exceptional customer care throughout your lifetime with our products. Our team is here to assist you with any questions you may have regarding the performance of your product. Simply call (402) 385-3051 and you can speak with our customer care team.

Additionally, please visit our website to see which rallies our Destination America team will be attending. For a nominal fee, our service technician will service your towing system to ensure it's in proper working condition. Also as a commitment to our customers, should you visit our factory you can stay at our full service Blue Ox campground at no charge along with enjoying a factory tour.

Again thank you for being our customer and for the confidence you have shown in the performance of our products. It is because of customers like you we enjoy the success we have today.

If the baseplate is in an accident, it must be replaced. **DO NOT** use it again! An accident can cause unseen damage and using it again could result in more damage or serious injury. **DO NOT** use the baseplate if it is damaged or missing parts.



© 2005, 07, 09, 10, 11 Blue Ox  
 One Mill Road, Industrial Park  
 Pender, Nebraska 68047  
 Phone: (402) 385-3051  
 Fax: (402) 385-3360  
 www.blueox.com