



BLUE OX®

BX1846

2012 Nissan Versa S/SV/SL Sedan Installation Instructions

Serial Number

Attachment Tab Height: 15"

Attachment Tab Width: 27"

Please read BOTH these Installation Instructions and the General Instructions prior to installing or operating this equipment.

- Blue Ox® towing products and accessories are intended to be installed by Blue Ox® Dealers who are familiar with our products and have the equipment and knowledge necessary to do "fit work". If needed, Blue Ox® Dealers can be found at www.blueox.com or by contacting our Customer Care Department at (402) 385-3051.
- Many Blue Ox® baseplates are designed to use existing holes and hardware to mount the baseplate to the towed vehicle. Even though bolts are there, do not assume they are adequate for baseplate mounting. Always use the hardware supplied in the hardware kit and existing hardware as specified in the installation instructions.



If the front of your vehicle looks different than this, please contact us at (402)385-3051.

Reference your vehicle owner's manual for manufacturer's towing specifications.

Bolt Torque Specifications

Torque in Foot-Pounds for Metric Bolts

Bolt Size	Grade 8.8	Grade 10.9
6MM	6	8
8MM	16	22
10MM	31	40
12MM	54	70
14MM	89	117

Bolt Torque Specifications

Torque in Foot-Pounds for Inch Bolts

Bolt Size	Grade 5	Grade 8
1/4"	10	14
5/16"	19	29
3/8"	33	47
7/16"	54	78
1/2"	78	119
5/8"	154	230

WARNING

Failure to read and follow these instructions could result in separation of the towed vehicle from the tow bar, causing property damage, loss of towed vehicle, personal injury or death.

BX1846
2012 Nissan Versa S/SV/SL Sedan
Installation Instructions

Removable Tabs: Use only with motorhome mount tow bars or the BX8833 or BX88151 adapters. Removable tabs with only one hole will not attach to car mount tow bars or other adapters. The Acclaim may only be used with removable tab baseplates that have 23" or greater spaced tabs. The Adventurer may only be used with baseplates that have 16" – 36" spaced removable tabs. The Ambassador may only be used with 24" spaced removable tabs.

Instruction Notes: The fascia and windshield washer fluid reservoir are removed and reinstalled for the baseplate installation. Some drilling and trimming is required.

The dimensional variations between otherwise identical vehicles can be considerable. While the baseplate was designed for easy installation, it may be necessary to tailor the baseplate slightly to compensate for vehicle manufacturer's tolerances. These minor adjustments may include filing a hole slightly, bending electrical rods or bending end plates.

The BX8869 Tail Light Wiring Kit is recommended for this vehicle.



Drill a 1" hole to install the 3 wire
automotive socket.

NOTICE

- Handling of some cosmetic parts when installing this product may require the use of protective covers, rags, specialty tools, etc. to prevent damage.
- When using power drills be aware of the dangers of torque and drill bit length.
- Be sure that **ALL** electrical connections are plugged in properly and functioning before reinstalling the fascia.
- Do not use the towed vehicle for storing luggage, equipment, etc. This may cause you to exceed the towing capacity of the tow bar, baseplate and its accessories.
- Be sure to use Loctite® Red on all bolts before tightening. Tighten all bolts according to the torque chart provided.

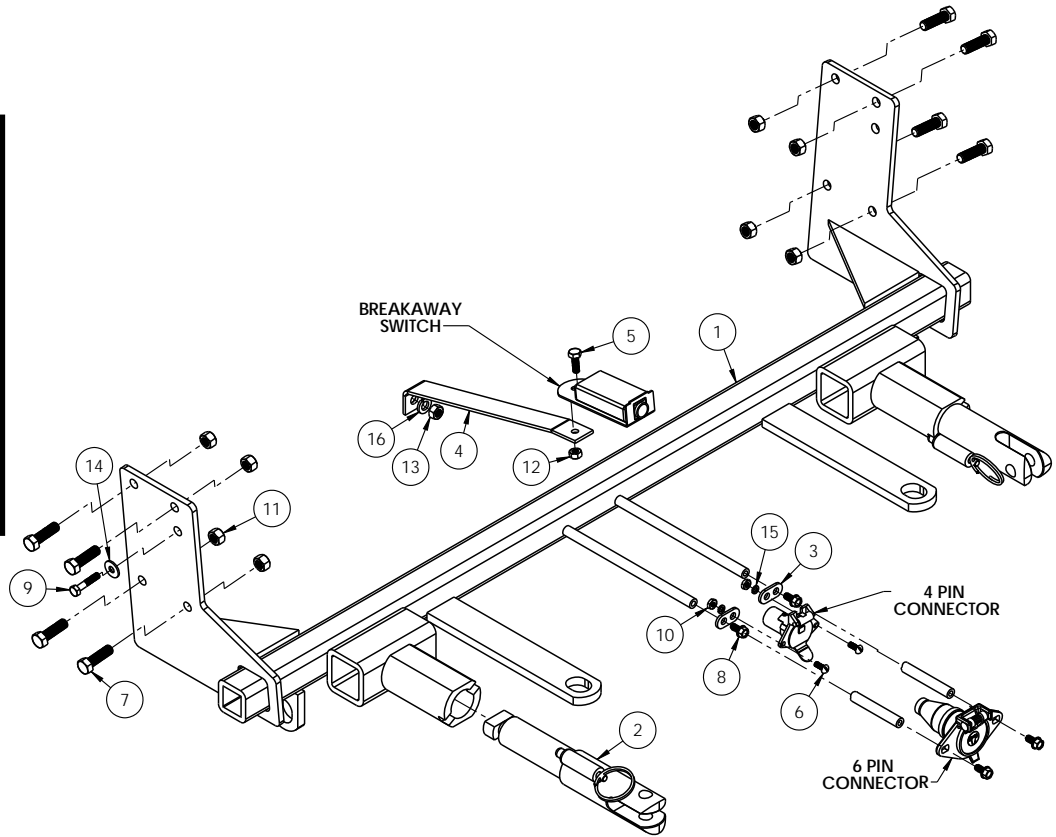
BX1846

2012 Nissan Versa S/SV/SL Sedan

Installation Instructions

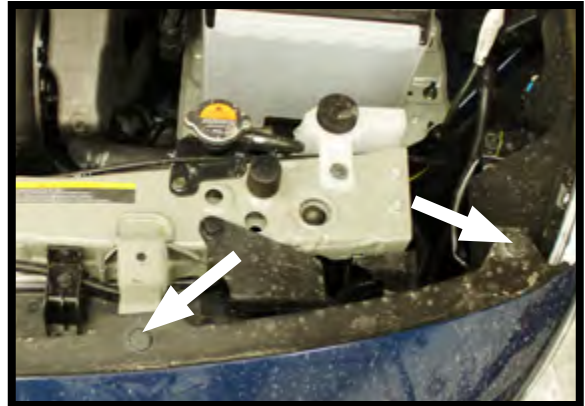
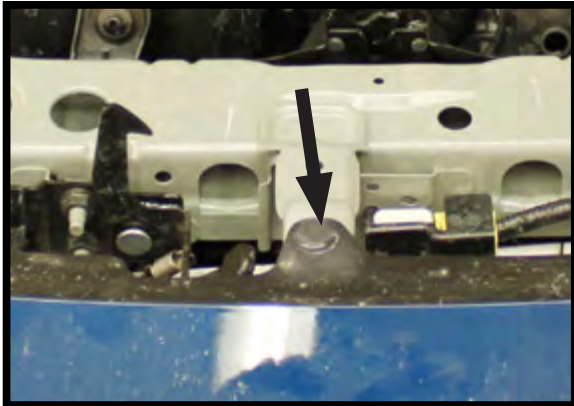
Tools Required

Large Vise Grip
 Flat Screwdriver
 Utility Knife
 Phillips Screwdriver
 Torque Wrench
 Drill
 Tape Measure
 Loctite® RED
 13/32" Drill Bit
 10MM Socket
 9/16" Socket
 9/16" Wrench

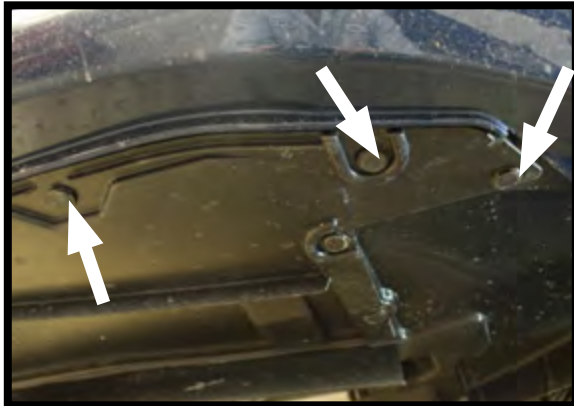


Item No.	Part No.	Description	Qty.
1.....	61-7006	BX1846 Baseplate.....	1
2.....	62-3469	Attachment Tab Assembly with Hole	2
3.....	101-5822	4 Way Connector Adapter	2
4.....	102-7325	BX1846 Breakaway Bracket.....	1
5.....	201-0050	1/4"-20 x 3/4" Hex Head Bolt, Grade 5, ZP	1
6.....	201-0192	#10-32 1/2" Round Slotted Head Screw.....	2
7.....	201-0368	3/8"-16 x 1-1/4" Hex Head Bolt, Grade 5, ZP	8
8.....	201-0553	1/4-20 x 1/2" Hex Wshd Bolt Type F TCS, ZP	2
9.....	201-0655	6MM-1.0 x 30MM Hex Head Bolt, Grade 8.8, ZP.....	1
10.....	202-0047	#10-32 Hex Nut	2
11.....	202-0090	3/8"-16 Hex Nylon Insert Lock Nut, ZP.....	8
12.....	202-0102	1/4"-20 Hex Nylon Nut, ZP	1
13.....	202-0118	8MM-1.25 Hex Nut, ZP.....	1
14.....	203-0001	1/4" Flat Washer, ZP.....	1
15.....	203-0054	#10 Lock Washer, ZP	2
16.....	203-0102	8MM Lock Washer, ZP	1
17.....	226-0046(not shown)	Class III Safety Cables	2
18.....	229-0359(not shown)	3/8" Quicklink, ZP	4
19.....	290-0437(not shown)	Black Cap Plug Receiver.....	1
20.....	293-1339(not provided).....	Breakaway Switch	1
21.....	294-0805(not provided).....	4 Pin Connector.....	1
22.....	294-0902(not provided).....	6 Pin Connector.....	1

BX1846
2012 Nissan Versa S/SV/SL Sedan
Installation Instructions



1. Remove the five (5) push pins that are located in the front area, underneath the hood. There are two (2) push pins located on the outer edges on **BOTH** the driver side and the passenger side. There is also one (1) located in the center.



2. Using a 20 torx remove the two (2) screws underneath the vehicle on the outside edge. Towards the center there are three (3) push pins that need to be removed. Do this on **BOTH** sides of the vehicle.

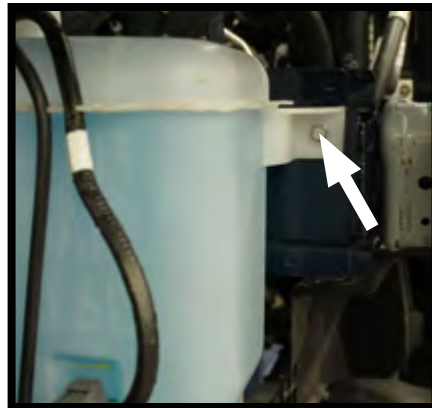
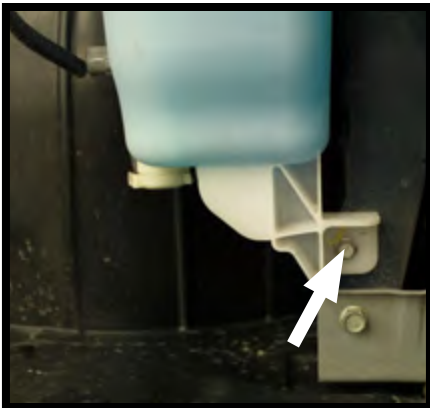


3. Remove the two (2) 10MM bolts that are located in the center.
4. Pull the splash guard back slightly. At the top portion of the wheel well area is a 10MM bolt. Using a 10MM socket remove this bolt. Do this on **BOTH** sides of the vehicle.

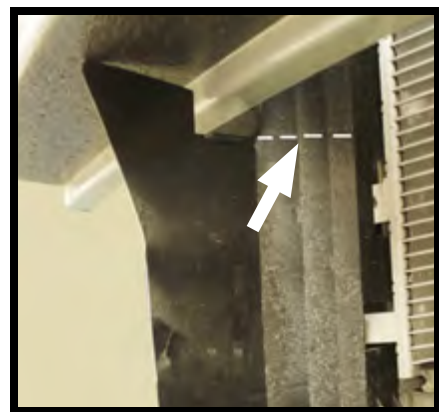
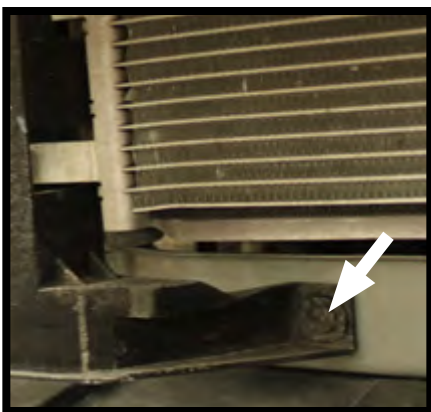
BX1846
2012 Nissan Versa S/SV/SL Sedan
Installation Instructions



5. With a Phillips screwdriver, remove the screw on top of the windshield wiper fluid reservoir. Next, disconnect the tubes and plug to prevent leakage. Set the reservoir off to the side temporarily.

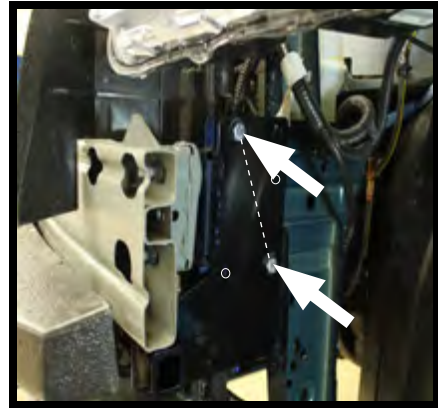
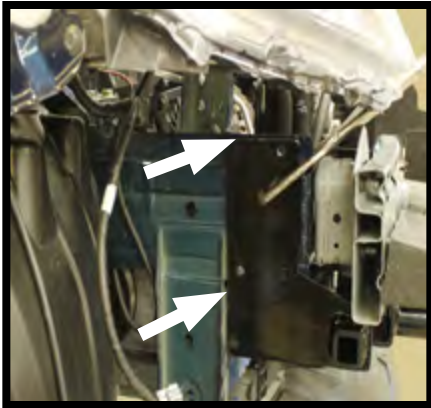


6. With a 10MM socket remove the three (3) bolts that hold the windshield wiper fluid reservoir in place. On the front of the reservoir there is one (1) bolt at the bottom and one (1) towards the top. On the backside of the reservoir is the 3rd bolt. It may be necessary to push back on the wheel well liner to access this bolt.



7. Release the push pin that is connected to the bumper. Using a utility knife cut straight across to remove the plastic guard. Do this on **BOTH** sides of the vehicle.

BX1846
2012 Nissan Versa S/SV/SL Sedan
Installation Instructions



8. Slide the baseplate downward at a slight angle and then up so the baseplate frame runs parallel with the vehicle's main frame. The top of the baseplate endplate should be flush with the top of frame. The back edge of the baseplate endplate should be aligned with the front edge of the main frame.

Start two (2) of the 3/8"-16 x 1-1/4" hex head bolts and 3/8" nut diagonally from each other. Insert the remaining two (2) bolts and nuts. Once all the fasteners have been started tighten securely. Do this on **BOTH** sides of the vehicle.



9. Using the existing stud, attach the breakaway bracket and securely fasten with the 8MM x 1.25 nut that has been provided.



10. Reconnect the windshield wiper fluid reservoir using the existing fasteners except

11. Attach the permanent baseplate safety cables to the provided convenience link on

BX1846
2012 Nissan Versa S/SV/SL Sedan
Installation Instructions

continued



for the top, front hole. For this, use the 6MM-1.0 x 30MM hex head bolt and the 1/4" washer that has been provided.

continued



the baseplate. The photo above shows the recommended installation of the cables to frame of vehicle. Additional options may interfere with suggested mounting; in this case, secure the cables to a solid piece of the frame as described in the instructions included with the permanent baseplate safety cables. Be sure the safety cables do not rub against any hoses or moving parts. Do this on **BOTH** sides of the vehicle.

12. Dealer or installer be certain the user receives the instruction sheet.

CUSTOMER SERVICE COMMITMENT

Blue Ox® is committed to providing you with exceptional customer care throughout your lifetime with our products. Our team is here to assist you with any questions you may have regarding the performance of your product. Simply call (402) 385-3051 and you can speak with our customer care team.

Additionally, please visit our website to see which rallies our Destination America team will be attending. For a nominal fee, our service technician will service your towing system to ensure it's in proper working condition. Also, as a commitment to our customers, should you visit our factory, you can stay at our full service Blue Ox® campground at no charge along with enjoying a factory tour.

Again, thank you for being our customer and for the confidence you have shown in the performance of our products. It is because of customers like you we enjoy the success we have today.

© 2012 Blue Ox
One Mill Road, Industrial Park
Pender, Nebraska 68047
Phone: (402) 385-3051
Fax: (402) 385-3360
www.blueox.com