



BX1962 Installation Instructions 2004-06 Chrysler Pacifica

Serial No.

The headlight assembly, front fascia and windshield washer reservoir are removed for base-plate installation. Drilling is required. Trimming of air dam and tab on the back side of fascia is required. The BX8869 is available for the vehicle. Attachment Tabs are 16 1/2 inches center to center and a height of 14 inches.



1. Remove two metric bolts using the 10MM socket and six phillips screws from the top edge of fascia with the phillips screw driver.



2. Remove two metric bolts from headlight assembly with the 8MM socket, pull forward, unplug electrical and set aside, both sides.



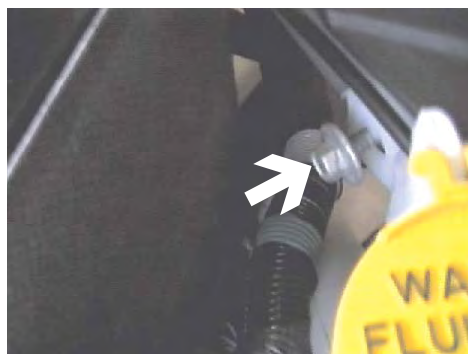
3. Just behind headlight assembly is one metric bolt to remove with the 10MM socket, both sides.



4. Forward of front tires, on fascia's edge, are three phillips screws to remove with the phillips screw driver, both sides.



5. Remove the five push pins from the bottom edge of fascia. Pull fascia forward and set aside.



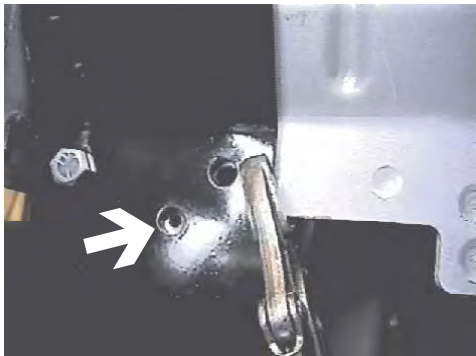
6. Using the 10MM socket, remove the metric bolt from the spout of window washer reservoir.



Strong As An Ox™



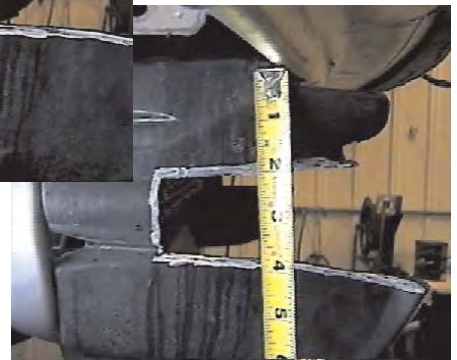
7. Remove the three remaining metric bolts from the washer reservoir, plug water lines, disconnect electrical plugs and set aside.



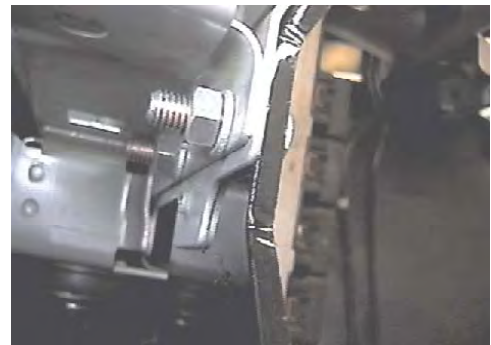
9. Align and center driver's side middle holes on baseplate with two existing holes for washer reservoir clamp with vise grips, both sides. Try to maintain same location for baseplate ends on both sides. Using the baseplate as a template, drill the two holes next to the lower washer reservoir hole with the 13/32" drill bit, both sides.



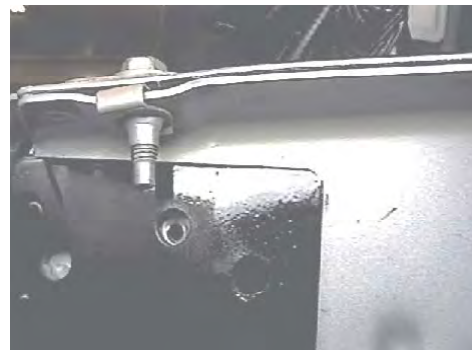
11. Remove three metric bolts from metal bumper with the 13MM socket, both sides. Pull metal bumper forward and set aside.



8. Measure and mark down from the bottom of metal bumper 2" and 4". Then 2 1/2" from the back of air dam forward. Cut and remove this section for baseplate insertion.



10. Install and tighten two 3/8" hex bolts, lock washers and 3/8" hex nut into these drilled holes, both sides, according to drawing on last page. **Be sure and use loctite on all bolts before tightening. Tighten all bolts according to the torque chart in the General Instruction sheet.**



12. Using the baseplate as a template, drill two holes beside the upper washer reservoir hole with the 13/32" drill bit, both sides.



Strong As An Ox™



13. Insert nut plate into end of frame opening to align with drilled hole, tighten 3/8" bolt and lock washer according to drawing on page 4, both sides. **Be sure to use loctite on all bolts before tightening. Tighten all bolts according to Torque Chart in General Instruction Sheet.**



14. Using the diagonal cutters, remove alignment clip from washer reservoir.



15. Drill out the three lower holes on washer reservoir using the 9/32" drill bit. **Do not drill out hole on spout.** Install and tighten the two 1/4" x 1 1/2" hex bolts, one 1/4" x 1" hex bolt, lock washers and hex nuts according to the drawing on page 4. Install and tighten metric bolt next to reservoir spout. **Be sure and use loctite on all bolts before tightening. Torque all bolts according to torque chart in General Instructions.**



16. Reinstall metal bumper (be sure to plug in the electrical sensor on the back of bumper), plug in washer reservoir's hoses and electrical connections. **Be sure all electrical components and hoses are plugged in properly.** Using the utility knife, cut and remove tab closest to fog light on the back side of the fascia. Reinstall fascia.

17. The dimensional variations between otherwise identical cars can be considerable. While the location and size of the holes in the baseplate were designed to allow for easy installation, it may be necessary to file a hole slightly to allow a bolt to clear.

18. Install the tow bar and safety cables according to the instructions included in their packages.

19. Do **not** substitute other devices if the tow bar pin and clip are lost.

20. **DEALER OR INSTALLER: BE CERTAIN THE USER RECEIVES THE INSTRUCTION SHEET.**

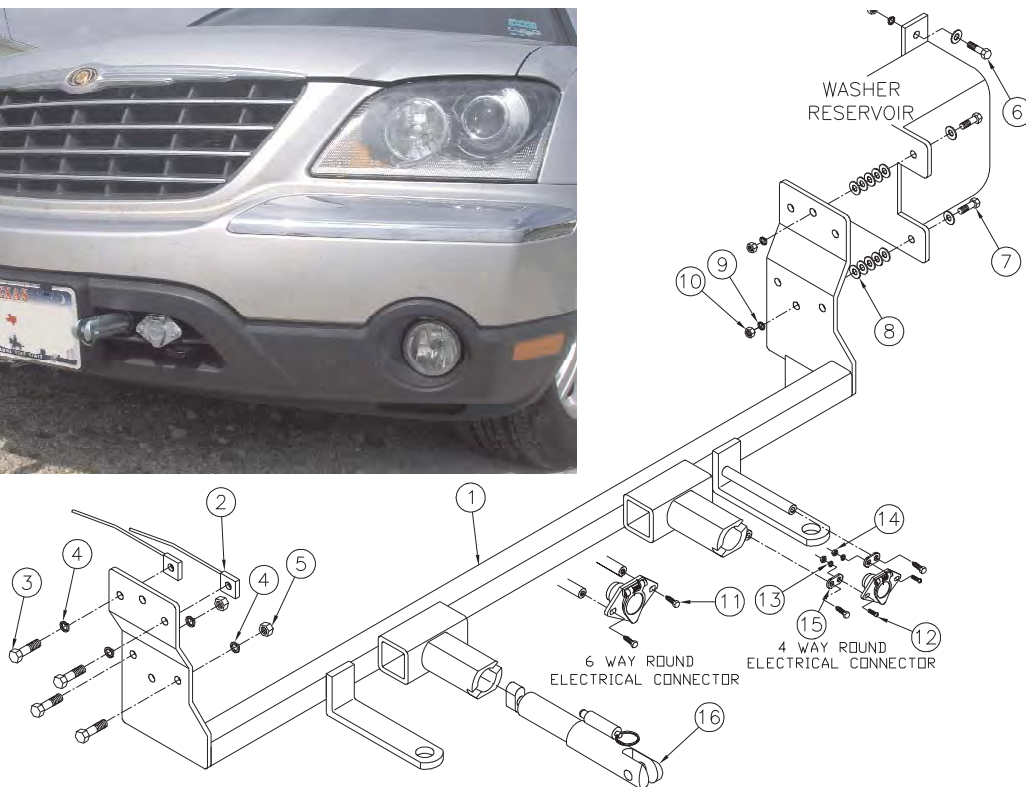


Tools Required

7MM Socket	10MM Socket	11MM Socket
13MM Socket	Loctite	13/32" Drill Bit
Phillips Screw Driver	Vise Grips	9/16" Socket
Pry Bar	Utility Knife	

Parts List

Ref. No.	Qty.	Part No.	Description
1	1	61-5924	Weldment, Base Plate, BX1962
2	4	61-5208	3/8" Nut Plate, with Wire
3	8	201-0368	3/8-16 x 1 1/4 Bolt, Grd. 5, ZP
4	8	203-0010	3/8 Lock Washer, ZP
5	4	202-0003	3/8-16 Hex Nut, ZP
6	1	201-0071	1/4-20 x 1 Bolt, Grd. 5, ZP
7	2	201-0448	1/4-20 x 1 1/2 Bolt, Grd. 5, ZP
8	13	203-0001	1/4 Flat Washer, ZP
9	3	203-0008	1/4 Lock Washer, ZP
10	3	202-0001	1/4-20, Hex Nut, ZP
11	2	201-0553	1/4-20 x 1/2 Hx. Wshd, Type F Screw
12	2	202-0047	#10-32 Hex Nut
13	2	203-0054	#10 Lock Washer
14	2	201-0192	#10-32 x 1/2 Slot, Rd. Hd. Screw
15	2	101-5822	Adapter, 4 Way Connector
16	2	62-3469	Attachment, Assembly, SF/ LB (R)
	2	226-0049	Baseplate Safety Cable, 36" CL IV (Not Shown)
	4	229-0512	Quicklink, 1/2, ZP (Not Shown)
	2	290-0437	Receiver Cap Plug, Blk (Not Shown)



IMPORTANT: Use only genuine factory replacement parts on your Base Plate. Do not substitute homemade or nontypical parts. If a bolt is lost or in need of replacement, for your safety and the preservation of your Base Plate, be sure to use a replacement bolt of the same grade (Usually Grade 5, refer to parts list). Repair parts may be ordered through your nearest **Blue Ox** dealer or distributor.