



Baseplate Installation Instructions

BX2245

# 2007-08 Honda Fit Installation Instructions

Serial Number

Please read BOTH these Installation Instructions and the General Towing Instructions before attempting to install or operate this equipment.

- Blue Ox® towing products and accessories are intended to be installed by Blue Ox® Dealers who are familiar with our products and have the equipment and knowledge to do “fit work”. When necessary, Blue Ox® Dealers can be found at [www.blueox.us](http://www.blueox.us) or by contacting our 24/7 Customer Care Department at (888) 425-5382.
- Many Blue Ox® Baseplates are designed to use existing holes and hardware to mount the baseplate to the towed vehicle. Even though bolts are there, do not assume they are adequate for baseplate mounting. Always use hardware supplied in the hardware kit or existing hardware specified in the Baseplate Installation Instructions.

Attachment Tab Height: 12 3/4”  
Attachment Tab Width: 24”

### Bolt Torque Specifications

Torque in Foot-Pounds per Metric Bolts

Bolt Size	Grade 8.8	Grade 10.9
6MM	6	8
8MM	16	22
10MM	31	40
12MM	54	70
14MM	89	117

Confirm the towability and pre-towing procedures for your vehicle with the owner’s manual or contact the vehicle’s manufacturer for specific towing procedures. You can also contact REMCO for additional information at 1(800)228-2481.

### Bolt Torque Specifications

Torque in Foot-Pounds per Inch Bolts

Bolt Size	Grade 5	Grade 8
1/4”	10	14
5/16”	19	29
3/8”	33	47
7/16”	54	78
1/2”	78	119
5/8”	154	230



## ! WARNING

Failure to read and follow these instructions could result in separation of the towed vehicle from the tow bar, causing property damage, loss of towed vehicle, personal injury or death.

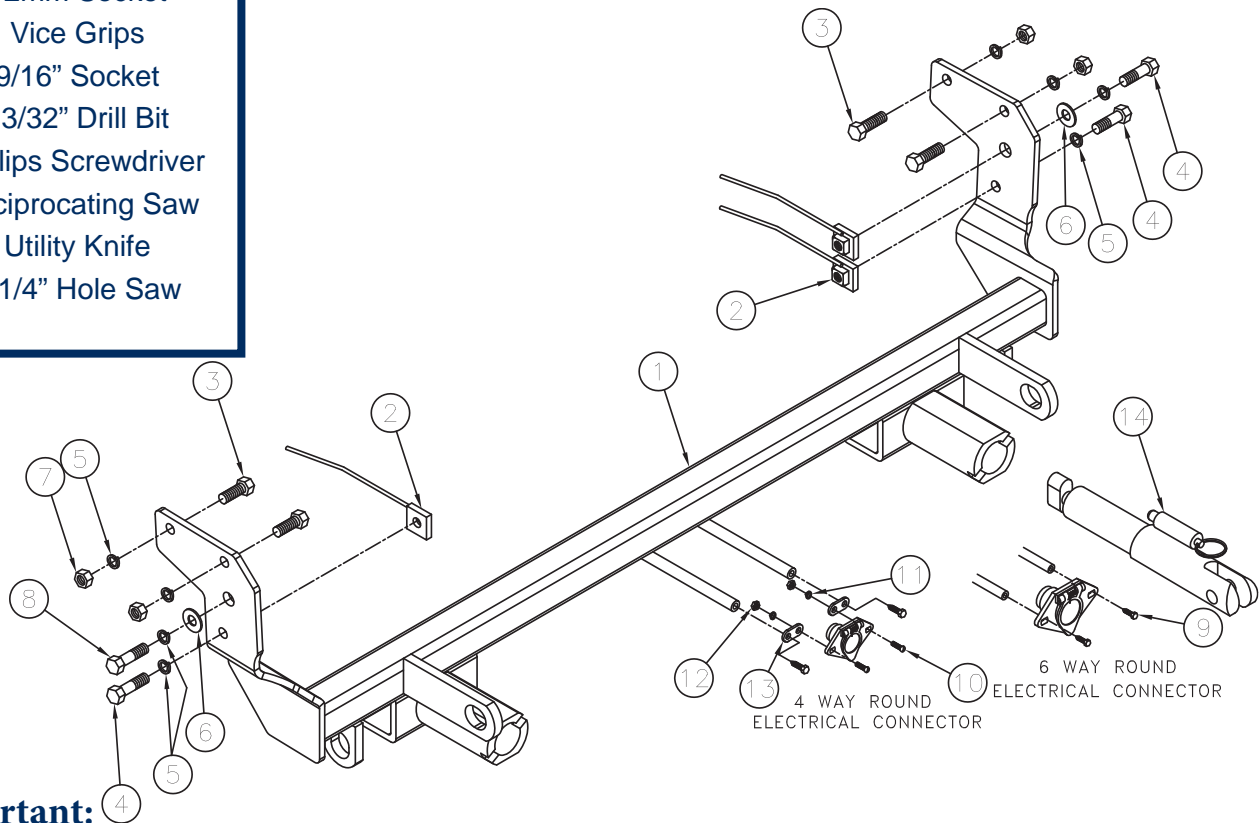
BX2245  
2007-08 Honda Fit  
Installation Instructions

## Parts List

Ref. No.	Qty.	Part #	Description
1	1	61-6317	Weldment, Baseplate, BX2245
2	3	61-5208	3/8" Nut Plate, with Wire
3	4	201-0443	3/8-16 x 1" Hex Bolt, Grd. 5, ZP
4	3	201-0440	3/8-16 x 1 1/2" Hex Bolt, Grd. 5, ZP
5	8	203-0010	3/8" Lock Washer, ZP
6	2	203-0003	3/8" Flat Washer, ZP
7	4	202-0003	3/8-16 Hex Nut, ZP
8	1	201-0418	8mm-1.25 x 35mm Hex Bolt, Grd. 8.8, ZP
9	2	201-0553	1/4-20 x 1/2" Hx. Wshd, Type F Screw, ZP
10	2	201-0192	#10-32 x 1/2 Slot, Rd. Hd. Screw, ZP
11	2	203-0054	#10 Lock Washer, ZP
12	2	202-0047	#10-32 Hex Nut, ZP
13	2	101-5822	Adapter, 4 Way Connector
14	2	62-3469	Attachment, Assembly, SF/LB (R)
	2	290-0437	Cap Plug, Black (Not Shown)
	2	226-0046	Permanent Baseplate Safety Cables (Not Shown)
	2	229-0359	3/8" Quick Link, ZP (Not Shown)

## Tools Required

Loctite® RED  
12mm Socket  
Vice Grips  
9/16" Socket  
13/32" Drill Bit  
Phillips Screwdriver  
Reciprocating Saw  
Utility Knife  
1 1/4" Hole Saw



### Important:

Use only genuine factory replacement parts on your baseplate. Do **NOT** substitute homemade or non-typical parts. If a bolt is lost or in need of replacement, for your safety and the preservation of your baseplate, be sure to use a replacement bolt of the same grade (In most cases it will be Grade 5, please reference the parts list above). Replacement parts may be ordered through your nearest Blue Ox® Dealer or Distributor.

BX2245

# 2007-08 Honda Fit

## Installation Instructions

### Attachment Tabs:

Due to the design of the removable tabs, the RangeFinderII tow bars can not be used. Adapters, except the BX8833 and BX88151, can not be used with this baseplate.

**Installation Notes:** The fascia, styrofoam bumper and metal bumper are removed for installation. Trimming of the metal bumper and fascia support are required. Drilling is required.

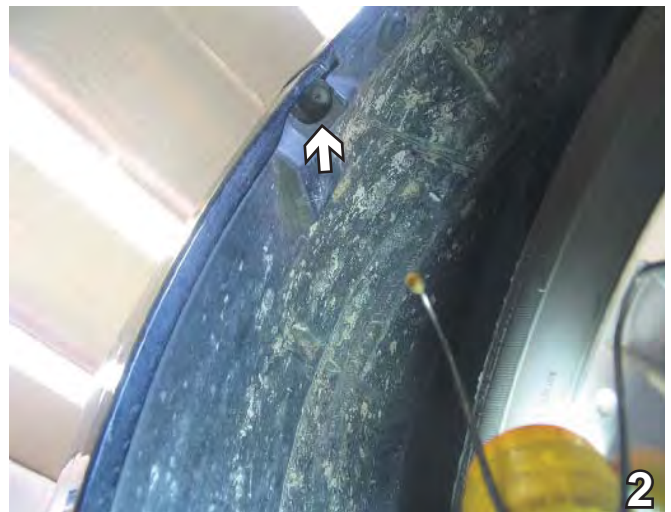
The dimensional variations between otherwise identical vehicles can be considerable. While the baseplate was designed for easy installation, it may be necessary to tailor the baseplate slightly to compensate for auto manufacturer's tolerances. These minor adjustments may include filing a hole slightly, bending electrical rods, and/ or bending end plates.

The BX8848 4-Diode Wiring Kit is recommended for this vehicle.

### Installation Instructions:



1. On top of the fascia, remove two pushpins between headlights and hood latch. Do this to both sides of the vehicle. Set pushpins aside to be reinstalled later.



2. Just inside wheel well, on edge of fascia, remove one Phillips screw. Do this to both sides of the vehicle. Set screws aside to be reinstalled later.



BX2245  
2007-08 Honda Fit  
Installation Instructions



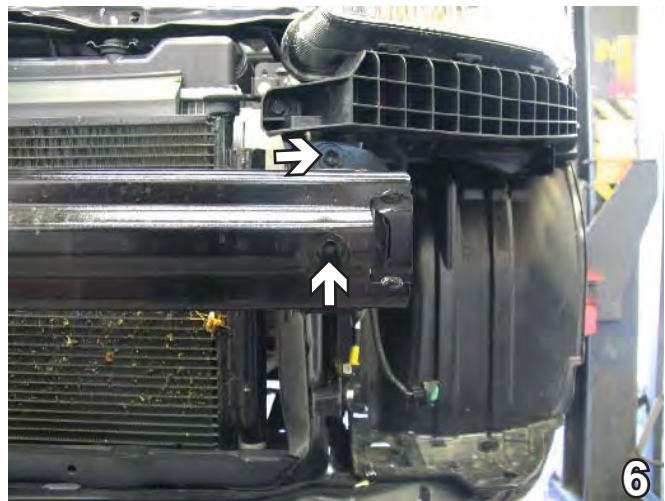
3. Remove eight pushpins from bottom of fascia (three each side and two in the center). Pull upper corners of fascia to the side to release tabs. Do this to both sides of the vehicle. Pull fascia forward to remove. Set pushpins and fascia aside to be reinstalled later.



4. Pull styrofoam bumper forward to remove. Set styrofoam bumper aside to be reinstalled later.



5. On the passenger's side, remove one metric bolt from the side of the metal bumper using the 12mm socket. Set bolt aside to be reinstalled later.



6. Using the 12mm socket, remove two metric bolts from the metal bumper. Do this to both sides of the vehicle. Pull metal bumper forward to remove. Set bolts and metal bumper aside to be reinstalled later.

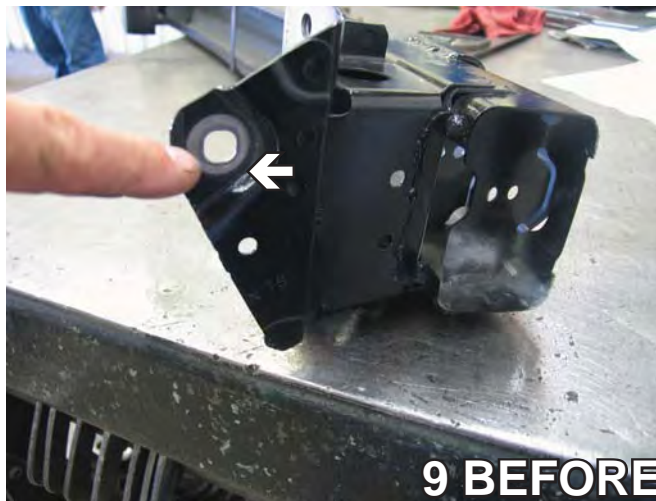
BX2245  
2007-08 Honda Fit  
Installation Instructions



7. Using the 1 1/4" hole saw, ream out the center hole on the end of the frame rail. Do this to both sides of the vehicle.



8. With the bottom of the metal bumper face up, mark the back of bumper bracket webbing so it is flush with the bottom edge of bumper. Using the reciprocating saw, cut the marked area to remove lower webbing. Do this to both sides of the vehicle.



9. Flatten bumper bracket with hammer.





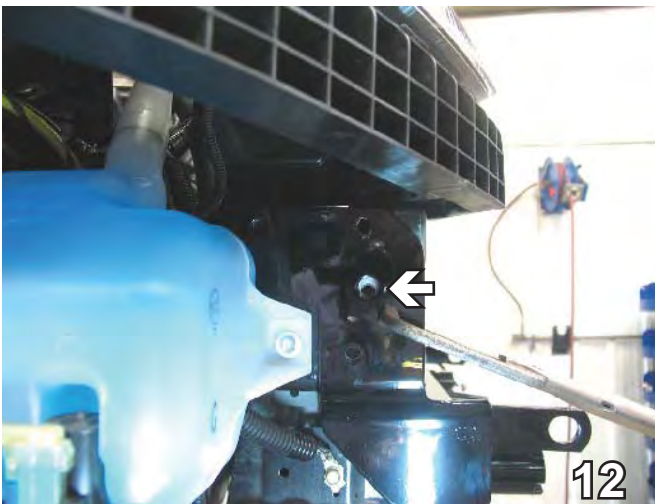
BX2245  
2007-08 Honda Fit  
Installation Instructions



10. Lay fascia face down on a smooth, flat surface. Using the utility knife, trim horizontally across the fascia support molding next to the grille (see white arrow). Remove one Phillips screw from the fascia support (see grey arrow). Remove upper portion of fascia support. Do this to both sides of the vehicle.



11. On the driver's side, mark the upper air vent flush with the back side of the grille opening. Using the utility knife, trim the marked area.



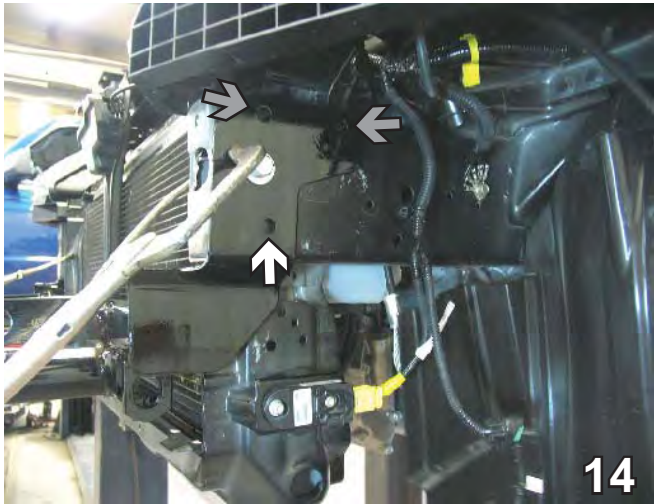
12. Align the baseplate with passenger's side existing hole, top and front edge of the frame rail. Clamp in place using the vice grips. Install the 8mm hex bolt with 3/8" lock washer and 3/8" flat washer to the existing hole and tighten. Using the baseplate as a template, drill the three remaining holes in the passenger's side frame with the 13/32" drill bit.



13. On the driver's side, use the baseplate as a template to drill the front center hole in the frame with the 13/32" drill bit. Insert 3/8" nut plate through frame end hole and align to the drilled hole. Install 3/8-16 x 1 1/2" hex bolt with 3/8" lock washer and 3/8" flat washer and tighten to nut plate.

# 2007-08 Honda Fit

## Installation Instructions



14. On the driver's side, use the baseplate as a template and drill the three remaining holes using the 13/32" drill bit. Insert 3/8" nut plate through frame end hole and align to the bottom hole (see white arrow). Install 3/8-16 x 1 1/2" hex bolt with 3/8" lock washer and tighten to nut plate. On upper two holes, install 3/8-16 x 1" hex bolt from the backside of the upper frame webbing and tighten to the 3/8" lock washers and 3/8-16 hex nuts on the outside of baseplate (see grey arrows).



15. On the passenger's side upper two holes, install 3/8-16 x 1" hex bolts from the upper frame webbing and tighten to the 3/8" lock washers and 3/8-16 hex nuts on the outside of baseplate (see white arrows). Insert 3/8" nut plate through frame end hole and align to the bottom hole (see grey arrow). Install 3/8-16 x 1 1/2" hex bolt with 3/8" lock washer and tighten to nut plate.

**BE SURE TO USE LOCTITE® RED ON ALL BOLTS BEFORE TIGHTENING. TIGHTEN ALL BOLTS ACCORDING TO THE TORQUE CHART ON THE FRONT PAGE OF THESE INSTRUCTIONS OR ON PAGE 3 OF THE BASEPLATE TOWING GENERAL INSTRUCTIONS.**

16. Attach the permanent baseplate safety cables to the provided convenience link on the baseplate. Secure the cable to a solid piece of the vehicle's frame as described in the instructions included with the permanent baseplate safety cables.

Be sure that **ALL** electrical connections are plugged in properly and functioning **BEFORE** installing the fascia.

17. Reinstall metal bumper, styrofoam bumper, fascia, pushpins, bolts and screws.

Install the tow bar and safety cables according to the instructions provided in their packages. When demonstrating this to the customer, be sure to include all the contents and packages.

Do **NOT** substitute other devices if the tow bar pins and clips are misplaced.

**DEALER or INSTALLER:**  
Be certain the user receives the instruction sheets for their products.



BX2245  
2007-08 Honda Fit  
Installation Instructions

## Customer Service Commitment

Blue Ox® is focused on providing exemplary customer service, as observed in our mission statement and guiding principles. In accordance with this objective, Blue Ox® is proud to provide services such as repairs and general maintenance of Blue Ox® products at over 150 RV Rallies. Look for our Destination America or Blue Ox® Racing service crews at the next rally or race that you attend. If you were not present, you will find an informative, personalized note explaining any services that may have been performed to your Blue Ox® products.

Blue Ox® also offers educational seminars at rallies and through our Park and Resort teams. In addition, Blue Ox® customers visiting our factory may take advantage of the well-equipped Blue Ox® RV park at no charge to you, our valued and appreciated customer.



Shown without removable tabs installed.



Shown with removable tabs installed.



© 2006 Blue Ox  
One Mill Road, Industrial Park  
Pender, Nebraska 68047  
Phone: (402) 385-3051 • Fax: (402) 385-3360  
[www.blueox.us](http://www.blueox.us)