



Baseplate Installation Instructions

# BX2248 2009 Honda Fit No Foglights Installation Instructions

Serial Number

Please read BOTH these Installation Instructions and the General Towing Instructions before attempting to install or operate this equipment.

- Blue Ox® towing products and accessories are intended to be installed by Blue Ox® Dealers who are familiar with our products and have the equipment and knowledge to do “fit work”. When necessary, Blue Ox® Dealers can be found at [www.blueox.us](http://www.blueox.us) or by contacting our Customer Care Department at (888) 425-5382.
- Many Blue Ox® Baseplates are designed to use existing holes and hardware to mount the baseplate to the towed vehicle. Even though bolts are there, do not assume they are adequate for baseplate mounting. Always use hardware supplied in the hardware kit or existing hardware specified in the Baseplate Installation Instructions.

Attachment Tab Height: 14 1/4”  
Attachment Tab Width: 17 1/2”

### Bolt Torque Specifications

Torque in Foot-Pounds per Metric Bolts

Bolt Size	Grade 8.8	Grade 10.9
6MM	6	8
8MM	16	22
10MM	31	40
12MM	54	70
14MM	89	117

Confirm the towability and pre-towing procedures for your vehicle with the owner’s manual or contact the vehicle’s manufacturer for specific towing procedures. You can also contact REMCO for additional information at 1(800)228-2481.

### Bolt Torque Specifications

Torque in Foot-Pounds per Inch Bolts

Bolt Size	Grade 5	Grade 8
1/4”	10	14
5/16”	19	29
3/8”	33	47
7/16”	54	78
1/2”	78	119
5/8”	154	230



## ! WARNING

Failure to read and follow these instructions could result in separation of the towed vehicle from the tow bar, causing property damage, loss of towed vehicle, personal injury or death.

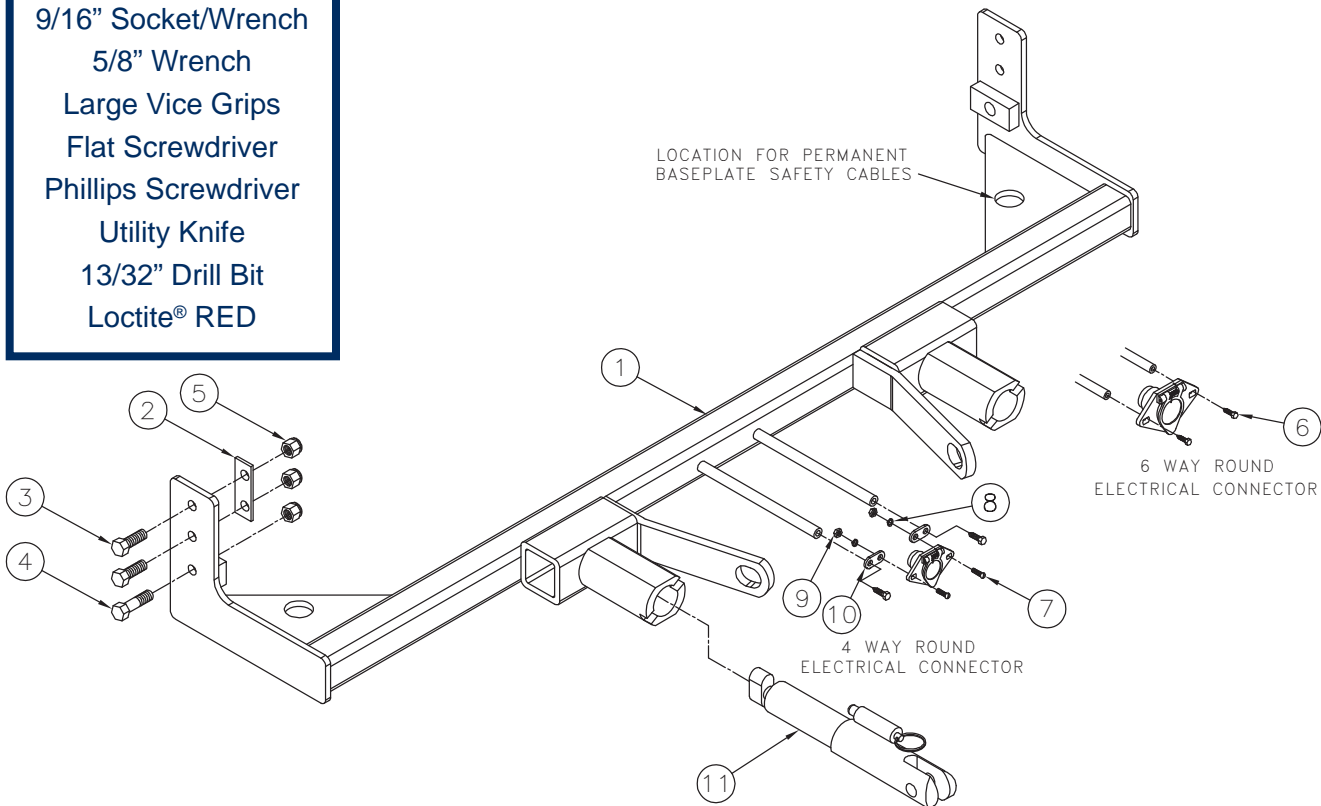
BX2248  
**2009 Honda Fit**  
 No Foglights  
 Installation Instructions

## Parts List

Ref. No.	Qty.	Part #	Description
1	1	61-6585	Weldment, Baseplate, BX2248
2	2	102-6946	Spacer, BX2248
3	4	201-0368	3/8-16 X 1 1/4 Hex Head Bolt, Grd. 5
4	2	201-0440	3/8-16 x 1 1/2" Hex Bolt, Grd. 5, ZP
5	6	202-0090	3/8-16 Hex Nyl. Ins. Lock Nut, ZP
6	2	201-0553	1/4-20 x 1/2" Hx. Wshd, Type F Screw, ZP
7	2	201-0192	#10-32 x 1/2 Slot, Rd. Hd. Screw, ZP
8	2	203-0054	#10 Lock Washer, ZP
9	2	202-0047	#10-32 Hex Nut, ZP
10	2	101-5822	Adapter, 4 Way Connector
11	2	62-3469	Attachment, Assembly, SF/LB (R)
	2	226-0046	Permanent Baseplate Safety Cables (Not Shown)
	2	229-0359	3/8" Quick Link, ZP (Not Shown)
	2	290-0437	Cap Plug, Black (Not Shown)

### Tools Required

- 12mm Socket
- 9/16" Socket/Wrench
- 5/8" Wrench
- Large Vice Grips
- Flat Screwdriver
- Phillips Screwdriver
- Utility Knife
- 13/32" Drill Bit
- Loctite® RED



### Important:

Use only genuine factory replacement parts on your baseplate. Do **NOT** substitute homemade or non-typical parts. If a bolt is lost or in need of replacement, for your safety and the preservation of your baseplate, be sure to use a replacement bolt of the same grade (In most cases it will be Grade 5, please reference the parts list above). Replacement parts may be ordered through your nearest Blue Ox® Dealer or Distributor.

BX2248  
2009 Honda Fit  
No Foglights  
Installation Instructions

**Attachment Tabs:**

Motorhome mount tow bars are recommended for use with this baseplate. Due to the design of the removable tabs, the RangeFinderII, Adventurer, and Ambassador tow bars can not be used. The Acclaim tow bar may be used, but will not fold and store on the front of the vehicle. Adapters, except the BX8833 and BX88151, can not be used with this baseplate.

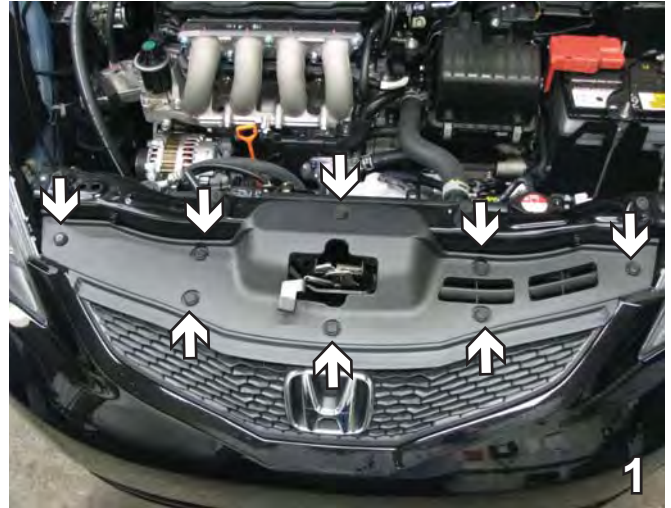
**Installation Notes:** The fascia and metal bumper are removed for installation. Trimming of the fascia support is required. Drilling is required.

The dimensional variations between otherwise identical vehicles can be considerable. While the baseplate was designed for easy installation, it may be necessary to tailor the baseplate slightly to compensate for auto manufacturer's tolerances. These minor adjustments may include filing a hole slightly, bending electrical rods, and/ or bending end plates.

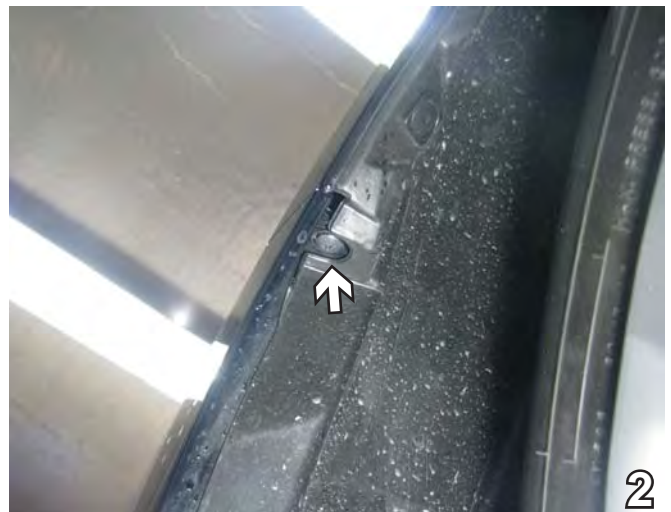
The BX8869 Bulb and Socket Wiring Kit is recommended for this vehicle.



**Installation Instructions:**

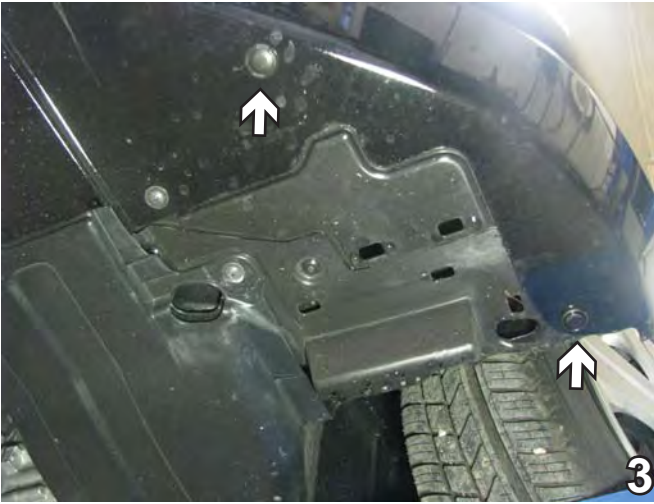


1. On top of the fascia, remove eight pushpins. Set pushpins aside to be reinstalled later.

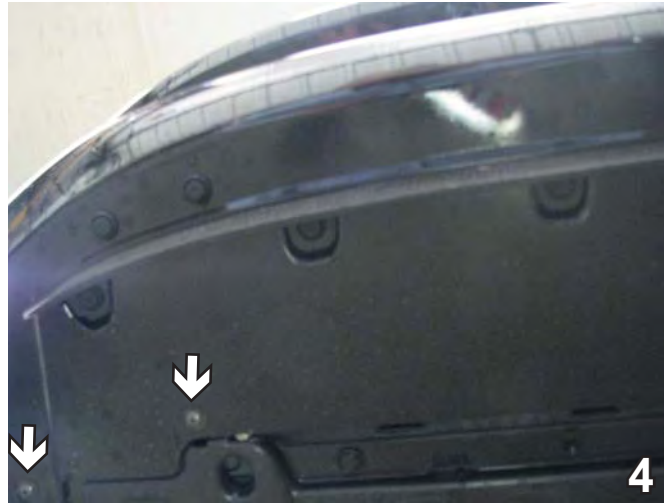


2. Just inside wheel well, on edge of fascia, remove one Phillips screw. Do this to both sides of the vehicle. Set screws aside to be reinstalled later.

BX2248  
2009 Honda Fit  
No Foglights  
Installation Instructions



3. Remove two pushpins from bottom of fascia in the corner. Set pushpins aside to be reinstalled later.



4. Using a Phillips screwdriver, remove two screws from under the fascia. Set screws aside to be reinstalled later.

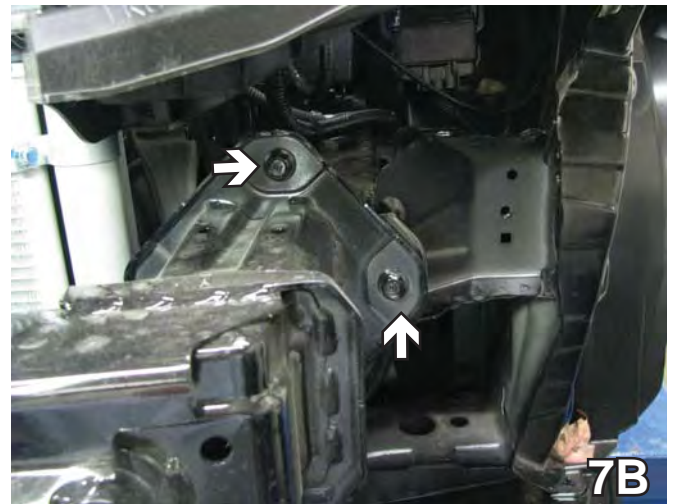
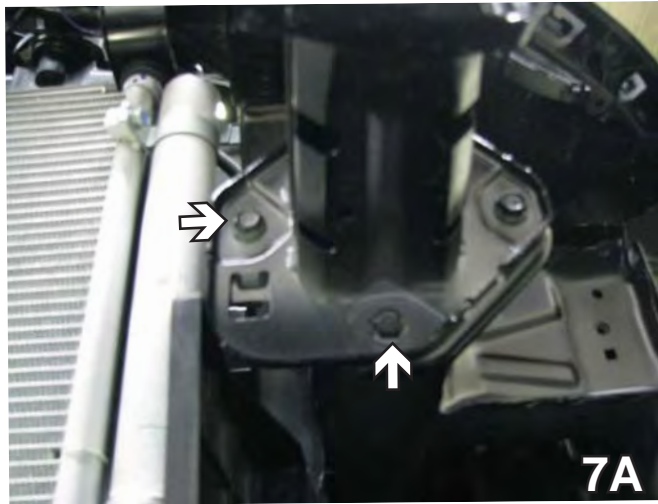


5. Remove three pushpins from across the edge. Set pushpins aside to be reinstalled later.

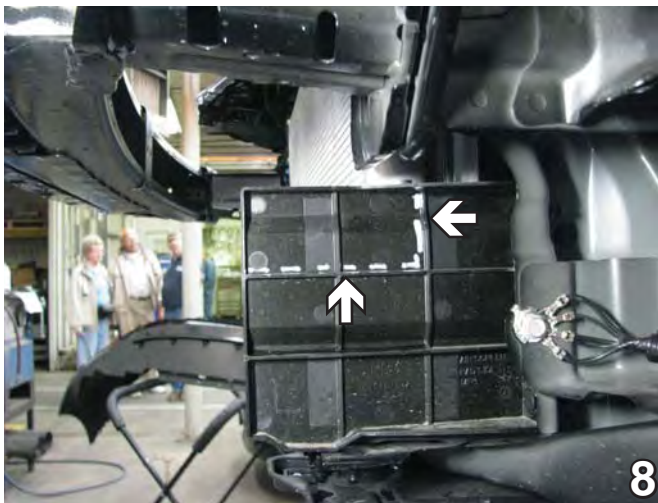


6. Grab the strip under the headlight and pop out all along under the headlight. Do this to both sides of the vehicle. Pull upper corners of fascia to the side. Do this to both sides of the vehicle. Pull fascia forward to remove. Set strip and fascia aside to be reinstalled later.

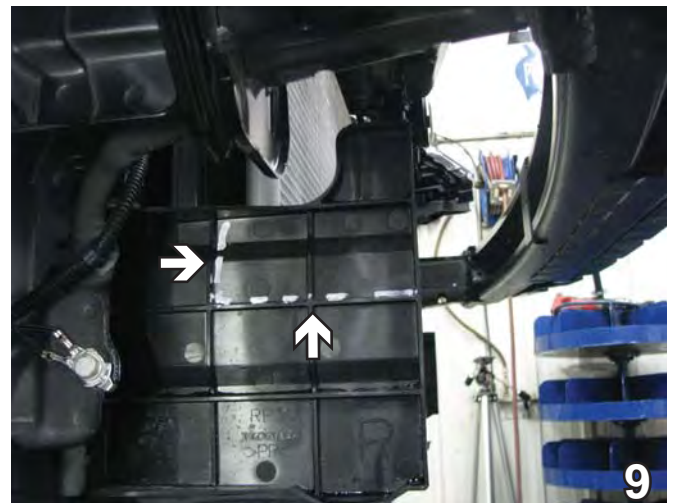
BX2248  
2009 Honda Fit  
No Foglights  
Installation Instructions



7. Using the 12mm socket, remove four bolts from the metal bumper. Do this to both sides of the vehicle. Pull metal bumper forward to remove. Set bolts and metal bumper aside to be reinstalled later.



8. Using the utility knife, cut the plastic on the driver's side as shown.



9. On the passenger side, also trim the plastic using a utility knife.

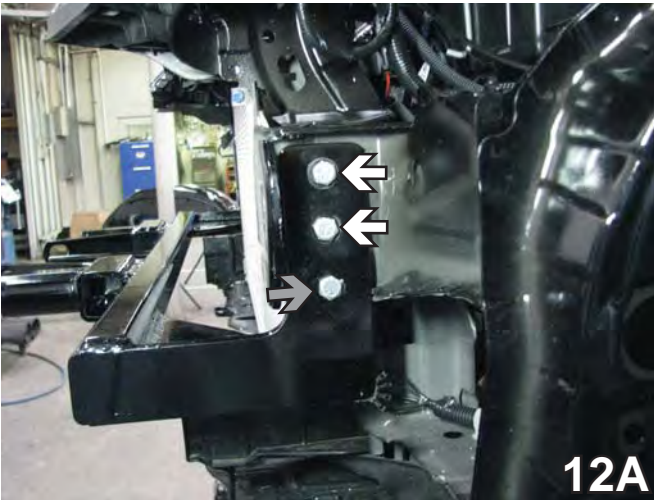
BX2248  
2009 Honda Fit  
No Foglights  
Installation Instructions



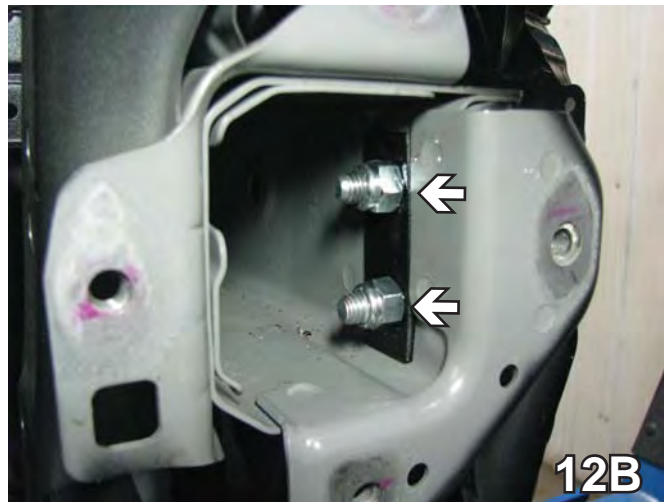
10. Using a 13/32" drill bit, drill out the top existing hole. Do this on both sides. On the passenger side, drill at an angle around the water reservoir if necessary.



11. Align the baseplate with the drilled out hole. Be sure the baseplate is level. Fasten on with a 1 1/4" bolt and 3/8" hex nut. Use the baseplate as a template to drill the other two holes. Do this on both sides.

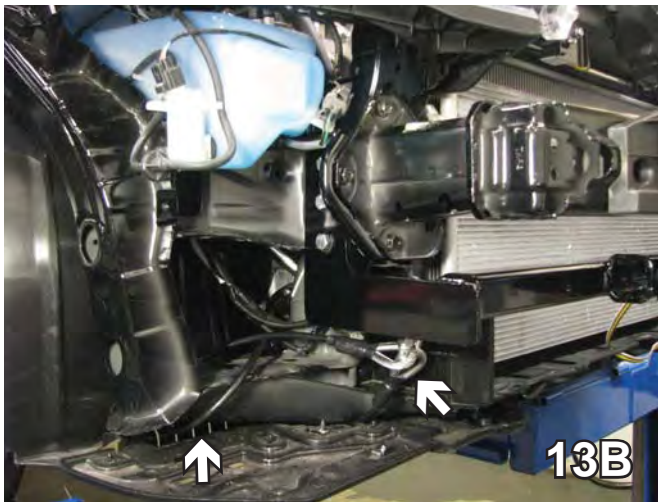
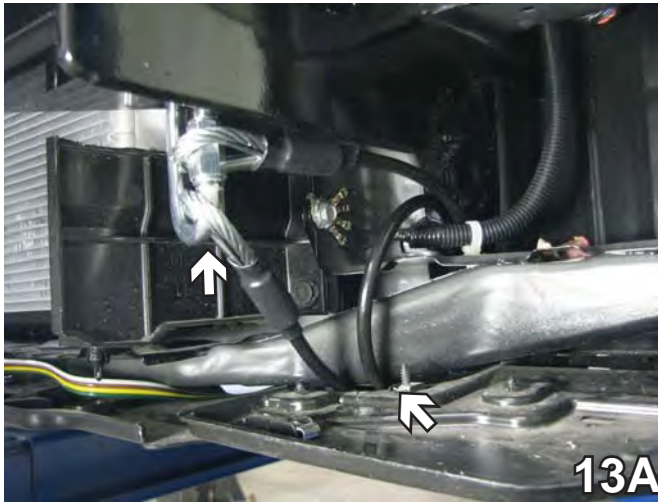


12. In the top two holes, insert 1 1/4" bolts (12A white arrows). On the inside of the frame end, attach to a plate with the narrow end to the front with 3/8" lock nuts (12B). In the bottom hole, insert 1 1/2" bolts (12A gray arrow) and attach to 3/8" lock nuts underneath on the webbing (12C). Use Loctite Red on all bolts. Do this on both sides.



**BE SURE TO USE LOCTITE® RED ON ALL BOLTS BEFORE TIGHTENING. TIGHTEN ALL BOLTS ACCORDING TO THE TORQUE CHART ON THE FRONT PAGE OF THESE INSTRUCTIONS OR ON PAGE 3 OF THE BASEPLATE TOWING GENERAL INSTRUCTIONS.**

BX2248  
2009 Honda Fit  
No Foglights  
Installation Instructions



13. Attach the permanent baseplate safety cables to the provided convenience link on the baseplate. Secure the cable to a solid piece of the vehicle's frame as described in the instructions included with the permanent baseplate safety cables.

14. After the baseplate has been installed. Reinstall metal bumper, strip, fascia, pushpins, bolts and screws.

Install the tow bar and safety cables according to the instructions provided in their packages. When demonstrating this to the customer, be sure to include all the contents and packages.

Do **NOT** substitute other devices if the tow bar pins and clips are misplaced.

Be sure that **ALL** electrical connections are plugged in properly and functioning **BEFORE** installing the fascia.

**DEALER or INSTALLER:**  
Be certain the user receives the instruction sheets for their products.

BX2248  
2009 Honda Fit  
No Foglights  
Installation Instructions



**Shown without removable tabs installed.**



**Shown with removable tabs installed.**

**CUSTOMER SERVICE COMMITMENT**

Blue Ox is committed to providing you with exceptional customer care throughout your lifetime with our products. Our team is here to assist you with any questions you may have regarding the performance of your product. Simply call 1-800-228-9289 and you can speak with our customer care team.

Additionally, please visit our website to see which rallies our Destination America team will be attending. For a nominal fee, our service technician will service your towing system to ensure it's in proper working condition. Also as a commitment to our customers, should you visit our factory you can stay at our full service Blue Ox campground at no charge along with enjoying a factory tour.

Again thank you for being our customer and for the confidence you have shown in the performance of our products. It is because of customers like you we enjoy the success we have today.



© 2006 Blue Ox  
One Mill Road, Industrial Park  
Pender, Nebraska 68047  
Phone: (402) 385-3051 • Fax: (402) 385-3360  
[www.blueox.us](http://www.blueox.us)