



**BLUE OX®**

**BX2334**

# 2012 Hyundai Veloster Installation Instructions

Serial Number

**Attachment Tab Height: 14.5"**

**Attachment Tab Width: 24"**

**Please read BOTH these Installation Instructions and the General Instructions prior to installing or operating this equipment.**

- Blue Ox® towing products and accessories are intended to be installed by Blue Ox® Dealers who are familiar with our products and have the equipment and knowledge necessary to do "fit work". If needed, Blue Ox® Dealers can be found at [www.blueox.com](http://www.blueox.com) or by contacting our Customer Care Department at (402) 385-3051.
- Many Blue Ox® baseplates are designed to use existing holes and hardware to mount the baseplate to the towed vehicle. Even though bolts are there, do not assume they are adequate for baseplate mounting. Always use the hardware supplied in the hardware kit and existing hardware as specified in the installation instructions.

**Bolt Torque Specifications**  
Torque in Foot-Pounds for Metric Bolts

Bolt Size	Grade 8.8	Grade 10.9
6Mm	6	8
8Mm	16	22
10Mm	31	40
12Mm	54	70
14Mm	89	117



If the front of your vehicle looks different than this, please contact us at (402)385-3051.

**Reference your vehicle owner's manual for manufacturer's towing specifications.**

**Bolt Torque Specifications**  
Torque in Foot-Pounds for Inch Bolts

Bolt Size	Grade 5	Grade 8
1/4"	10	14
5/16"	19	29
3/8"	33	47
7/16"	54	78
1/2"	78	119

**WARNING**

Failure to read and follow these instructions could result in separation of the towed vehicle from the tow bar, causing property damage, loss of towed vehicle, personal injury or death.



**BLUE OX**

**BX2334**

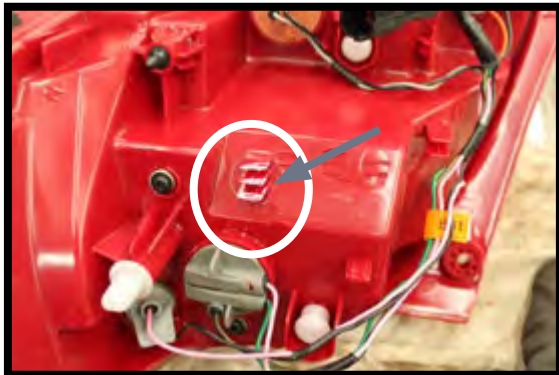
## 2012 Hyundai Veloster Installation Instructions

**Removable Tabs:** Motorhome mount tow bars are recommended for use with this baseplate. Due to the design of the removable tabs the RangeFinderII tow bar can not be used. Adapters, except the BX8833 and BX88151, can not be used with this baseplate.

**Instruction Notes:** The fascia, plastic fascia guard, bumper, and air horn are removed and reinstalled for the baseplate installation. Some drilling and trimming is required.

The dimensional variations between otherwise identical vehicles can be considerable. While the baseplate was designed for easy installation, it may be necessary to tailor the baseplate slightly to compensate for vehicle manufacturer's tolerances. These minor adjustments may include filing a hole slightly, bending electrical rods or bending end plates.

The BX8869 Tail Light Wiring Kit is recommended for this vehicle.



1. Trim tabs only if installing a BX8869 Tail Light Wiring Kit.



2. Drill a 1" hole to install the 3 wire automotive socket.

### **NOTICE**

- Handling of some cosmetic parts when installing this product may require the use of protective covers, rags, specialty tools, etc. to prevent damage.
- When using power drills be aware of the dangers of torque and drill bit length.
- Be sure that **ALL** electrical connections are plugged in properly and functioning before reinstalling the fascia.
- Do not use the towed vehicle for storing luggage, equipment, etc. This may cause you to exceed the towing capacity of the tow bar, baseplate and its accessories.
- Be sure to use Loctite® Red on all bolts before tightening. Tighten all bolts according to the torque chart provided.



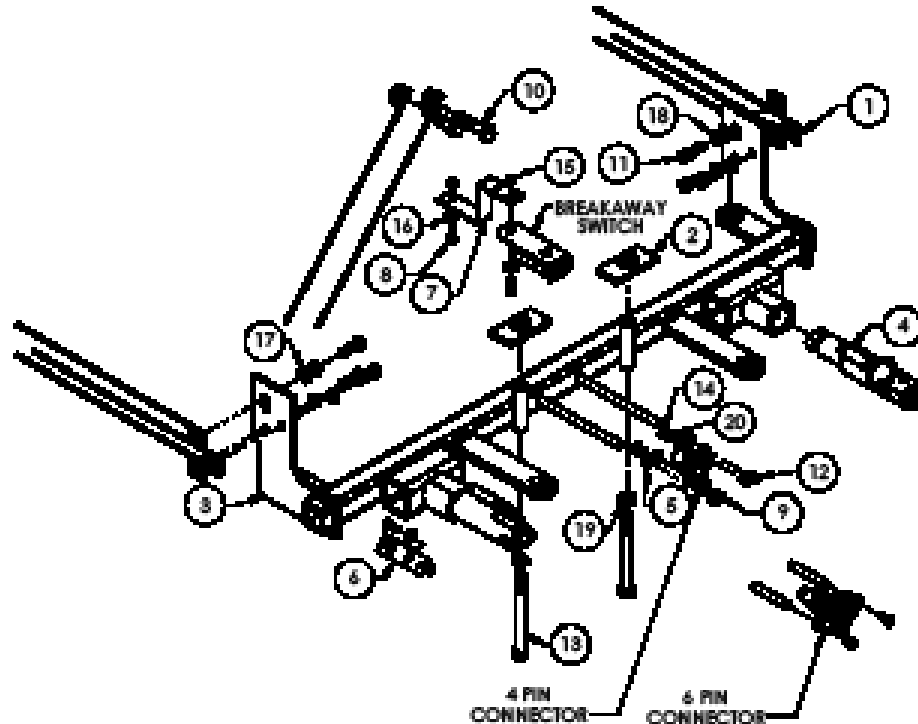
**BLUE OX®**

**BX2334**

# 2012 Hyundai Veloster Installation Instructions

### Tools Required

- Large Vise Grip
- Flat Screwdriver
- Utility Knife
- Phillips Screwdriver
- Torque Wrench
- Drill
- Tape Measure
- Loctite® RED
- 1/2" Drill Bit
- 1/4" Drill Bit
- 13/32" Drill Bit
- 10Mm Socket
- 12Mm Socket
- 9/16" Socket
- 9/16" Wrench



Item No.	Part No.	Description	Qty.
1.....	61-5208.....	Nut Plate Weldment with Wire.....	8
2.....	61-5342.....	Nut Plate Weldment.....	2
3.....	61-6981.....	BX2234 Baseplate Weldment.....	1
4.....	62-3468.....	Attachmet Tab Assembly.....	2
5.....	101-5822.....	4 Way Connector Adapter.....	2
6.....	102-7195.....	BX1308 Breakaway Bracket.....	1
7.....	102-7297.....	BX2234 Breakaway Bracket.....	1
8.....	201-0050.....	1/4"-20 X 3/4" Hex Head Bolt Grade 5, ZP.....	3
9.....	201-0192.....	#10-32 x 1/2" Round Slotted Head Screw.....	2
10.....	201-0283.....	1/2"-13 x 2" Hex Head Bolt, Grade 5, ZP.....	2
11.....	201-0368.....	3/8"-16 x 1-1/4" Hex Head Bolt, Grade 5, ZP.....	6
12.....	201-0553.....	1/4"-20 x 1/2" Self Tapping Hex Head Bolt, ZP.....	2
13.....	201-0786.....	1/2"-13 x 5" Hex Head Bolt, Grade 5, ZP.....	2
14.....	202-0047.....	#10-32 Hex Nut.....	2
15.....	202-0102.....	1/4"-20 Hex Nut with Nylon Insert, ZP.....	3
16.....	203-0001.....	1/4" Flat Washer, ZP.....	3
17.....	203-0003.....	3/8" Flat Washer, ZP.....	2
18.....	203-0010.....	3/8" Lock Washer, ZP.....	6
19.....	203-0012.....	1/2" Lock Washer, ZP.....	2
20.....	203-0054.....	#10 Lock Washer, ZP.....	2
21 (not shown).....	226-0046.....	36" Class III Baseplate Safety Cable.....	2
22 (not shown).....	229-0359.....	3/8" Quicklink, ZP.....	2
23 (not shown).....	290-0437.....	Black Cap Plug Receiver.....	2
24 (not provided).....	293-1339.....	Breakaway Switch.....	1
25 (not provided).....	294-0805.....	4 Pin Connector.....	1
26 (not provided).....	294-0902.....	6 Pin Connector.....	1



**BLUE OX**

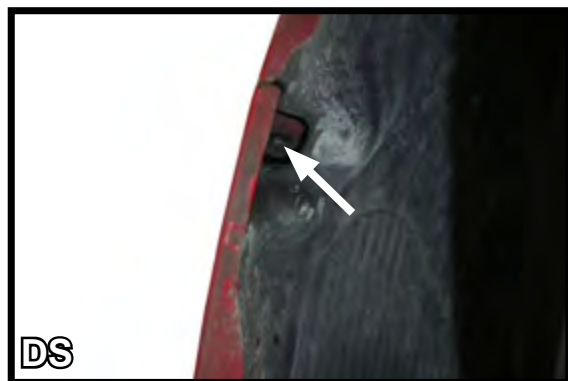
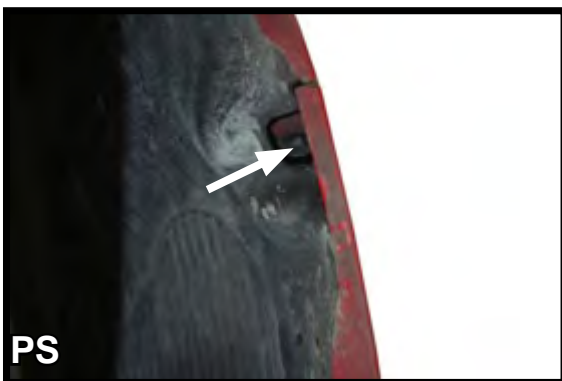
# BX2334 2012 Hyundai Veloster Installation Instructions



1. With a 10mm socket, remove the two (2) bolts on the top portion of the fascia. Using a flat screwdriver, release the push pin.



2. With a phillips screwdriver, remove the two (2) screws from the underside of the fascia.



3. With a 10Mm socket, remove the bolt located on the outer edge on the front wheel well area of the vehicle.



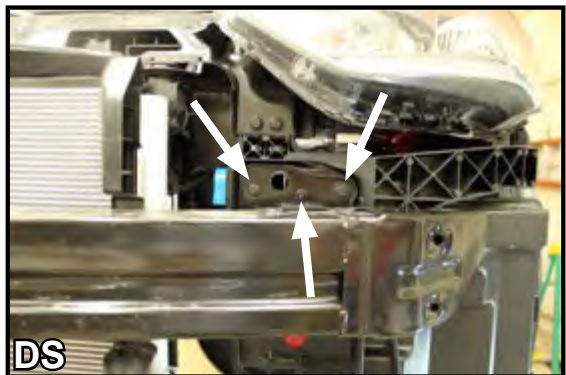
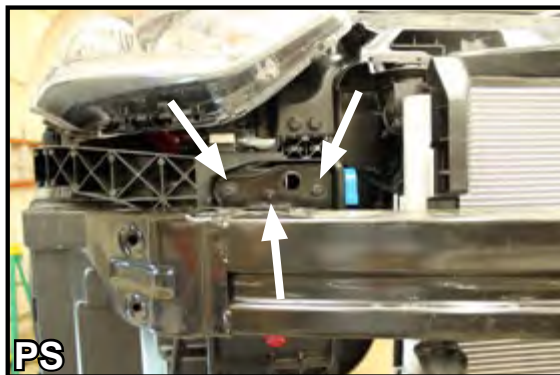


**BLUE OX**

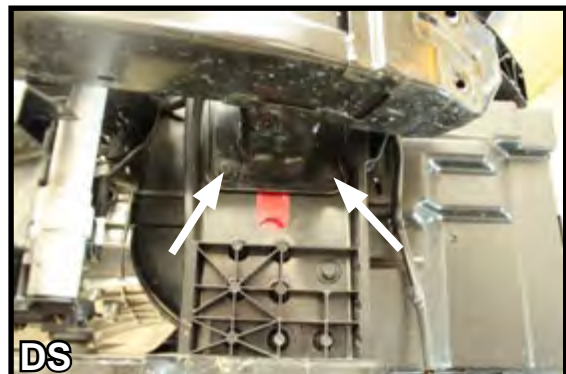
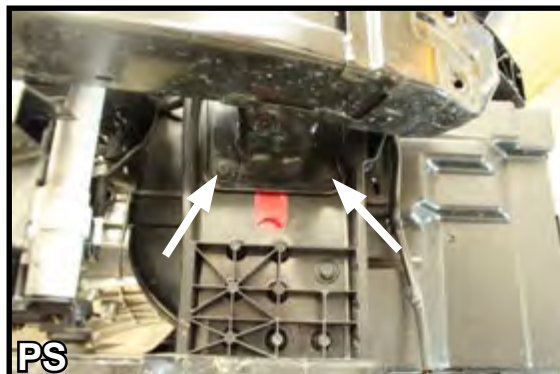
# BX2334 2012 Hyundai Veloster Installation Instructions



4. Pull the side of the fascia slightly downward away from the headlights. Lift the side upward and gently away from the vehicle. Place the front fascia to the side during baseplate installation.



5. Remove the three (3) bolts located above the bumper. The two (2) outer bolts require a 12mm socket. The center bolt will require a 10mm socket to remove.



6. Remove the two (2) 12mm bolts that are located under the bumper. Once the hardware is removed from both sides, place the bumper upside down on a steady, flat working surface.
7. Using a 10Mm socket remove air horn and lay it aside. It will be reinstalled after the baseplate has been installed.

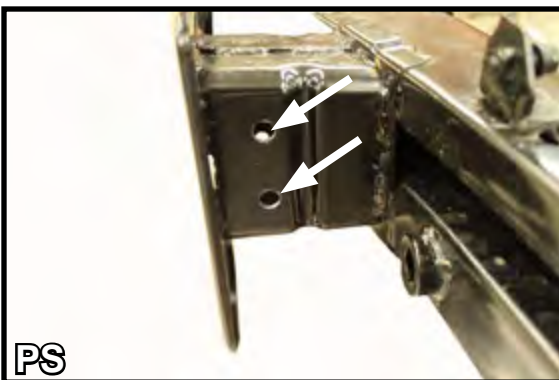


**BLUE OX**

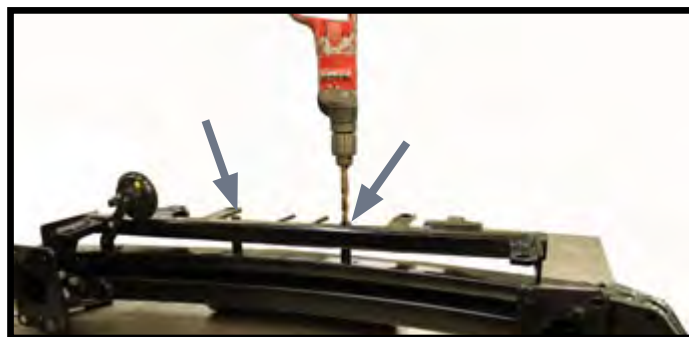
**BX2334**  
**2012 Hyundai Veloster**  
**Installation Instructions**



8. Notch the bumper support tab at an angle to remove the outward protruding portion.  
NOTE: Be careful not to notch the hook.



9. Ream out the existing two (2) holes on both side of the bumper using a 13/32" drill bit.



10. Once the baseplate has been installed, drill out the two (2) upright tubes that are located on the front of the baseplate to 17/32". Apply Loctite® Red prior to inserting the hardware.



**BLUE OX**

**BX2334**

## 2012 Hyundai Veloster Installation Instructions

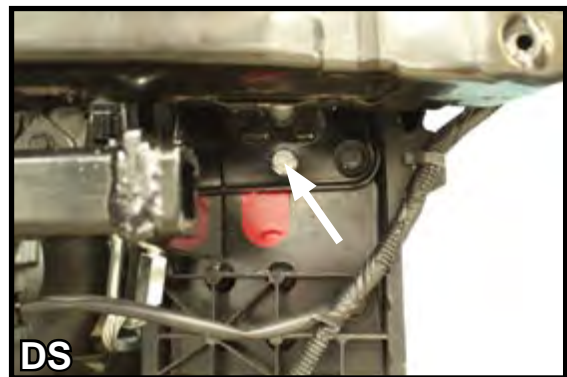
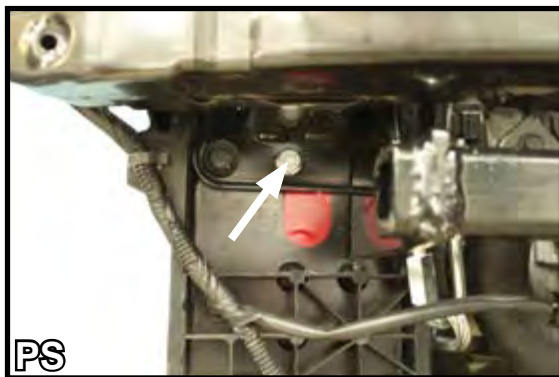


11. Using the baseplate end plates as a guide, drill an additional 13/32" hole on both sides.



12. Reattach air horn using the air horn extension bracket that has been provided with your baseplate.

13. Remount bumper using the existing hardware. Apply Loctite® Red to all holes prior to inserting hardware.



14. For additional bumper support, drill a 13/32" hole on both sides of the





**BLUE OX<sup>®</sup>**

## **BX2334** **2012 Hyundai Veloster** **Installation Instructions**



15. Attach the permanent baseplate safety cables to the provided convenience link on the baseplate. The photo above shows the recommended installation of the cables to frame of vehicle. Additional options may interfere with suggested mounting; in this case, secure the cables to a solid piece of the frame as described in the instructions included with the permanent baseplate safety cables. Be sure the safety cables do not rub against any hoses or moving parts. Do this on both sides of the vehicle.
  
16. Dealer or installer be certain the user receives the instruction sheet.





**BLUE OX®**

**BX2334**

## 2012 Hyundai Veloster Installation Instructions

### **CUSTOMER SERVICE COMMITMENT**

Blue Ox® is committed to providing you with exceptional customer care throughout your lifetime with our products. Our team is here to assist you with any questions you may have regarding the performance of your product. Simply call (402) 385-3051 and you can speak with our customer care team.

Additionally, please visit our website to see which rallies our Destination America team will be attending. For a nominal fee, our service technician will service your towing system to ensure it's in proper working condition. Also, as a commitment to our customers, should you visit our factory, you can stay at our full service Blue Ox® campground at no charge along with enjoying a factory tour.

Again, thank you for being our customer and for the confidence you have shown in the performance of our products. It is because of customers like you we enjoy the success we have today.

**If the baseplate is in an accident, it must be replaced. DO NOT use it again! An accident can cause unseen damage and using it again could result in more damage or serious injury. DO NOT use the baseplate if it is damaged or missing parts.**



**BLUE OX®**

© 2011 Blue Ox  
One Mill Road, Industrial Park  
Pender, Nebraska 68047  
Phone: (402) 385-3051  
Fax: (402) 385-3360  
[www.blueox.com](http://www.blueox.com)