



BX1940 Installation Instructions
2000-02 Plymouth Neon
2000-02 Dodge Neon

Serial No.

The baseplate mounts to the metal bumper and to the lower cross frame of the vehicle. Drilling is required. The attachment tabs are 24 inches center to center and a height of 19 inches.

1. Remove the three 10MM nuts holding the plastic fascia to the fender moldings.
2. Remove the center piece (with logo) by removing the four 7MM Hex head bolts holding the piece.
3. Remove the two 10MM Hex head screws from behind the fascia area where the center grill was removed. Remove the two (each side) Torx 25 bolts from in front of the tire.
4. Remove the five 8MM Hex head screws from the bottom of the plastic fascia.
5. The bottom of the rock guard has two 1/2" holes, use a long extension and remove the 10MM Hex head bolts holding the bumper. **Some models may have two metric bolts to remove from tabs on the bottom of metal bumper.** Pull fascia forward from car and set aside.
6. Hold baseplate up to the lower cross frame "channel" and the bottom of the metal bumper. Refer to the picture. Center the baseplate according to the metal bumper. Double check measurements and clamp in place with vise grips.
7. Mark and drill the two holes for the bottom of the metal bumper with the 17/32" drill bit. After the holes are drilled, place the 1/2" bolt plates (item 2) through the back of the bumper and loosely bolt baseplate to the bumper using 1/2" hardware. **2002 Models** will use items 3, 4, and 5 according to drawing on last page. **Be sure and use loctite on all bolts before tightening. Tighten all bolts according to General Instruction sheet.**
8. Hold the lower braces to the bottom of the cross frame "channel", mark and drill through both sides. Place the tube spacer between the channel and bolt (3/8 x 4 Hex Bolt) pieces together using the 3/8" lock washer and hex nut. **Be sure and use loctite on all bolts before tightening. Tighten all bolts according to General Instruction sheet.**
9. Replace the bumper fascia.
10. Install the tow bar and safety cables according to the instructions included in their packages. Do not substitute other devices if the tow bar pin and clip are lost.
11. The dimensional variations between otherwise identical cars can be considerable. While the location and size of the holes in the baseplate were designed to allow for easy installation, it may be necessary to file a hole slightly to allow a bolt to clear.
12. **DEALER OR INSTALLER: BE CERTAIN THE USER RECEIVES THE INSTRUCTION SHEET.**





Strong As An Ox™

Tools Required

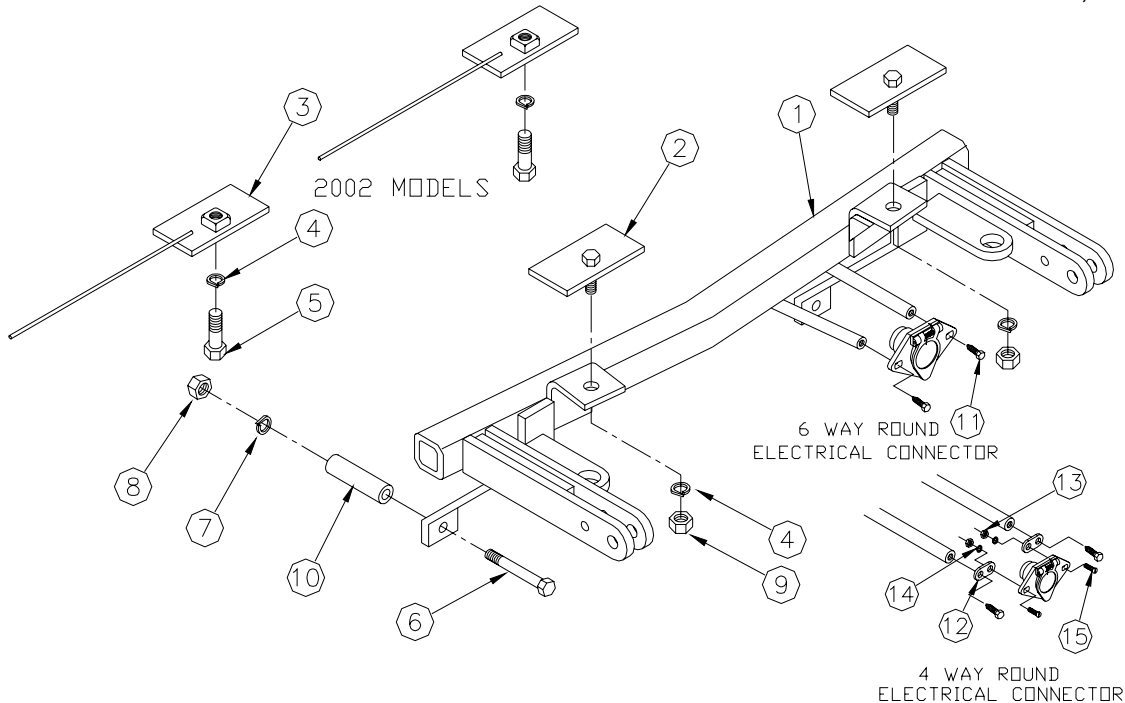
7MM Socket
18MM Socket
17/32" Drill Bit
3/4" Socket

8MM Socket
Loctite
Hack Saw
Utility Knife

10MM Socket
13/32" Drill Bit
9/16" Socket
Torx-25

Parts List

Ref. No.	Qty.	Part No.	Description
1	1	61-5339	Weldment, Base Plate, BX1940
2	2	61-5340	1/2-13 x 1 1/4 Bolt Plate
3	2	61-5788	1/2-13 Nut Plate with 18" Wire
4	2	203-0012	1/2 Lock Washer, ZP
5	2	201-0051	1/2-13 x 1 1/2 Hex Bolt, Grd. 5, ZP
6	2	201-0618	3/8-16 x 4 Hex Bolt, Grd. 5, ZP
7	2	203-0010	3/8 Lock Washer, ZP
8	2	202-0003	3/8-16 Hex Nut, ZP
9	2	202-0005	1/2-13 Hex Nut, ZP
10	2	104-0546	Spacer, BX1940
11	2	201-0553	1/4-20 x 1/2 Hex Wshd, Type F TCS, ZP
12	2	101-5822	Adapter, 4 Way Connector
13	2	202-0047	#10-32 Hex Nut, ZP
14	2	203-0054	#10 Lock Washer
15	2	201-0192	#10-32 x 1/2 Slot, Rd. Hd. Screw



IMPORTANT: Use only genuine factory replacement parts on your Base Plate. Do not substitute homemade or nontypical parts. If a bolt is lost or in need of replacement, for your safety and the preservation of your Base Plate, be sure to use a replacement bolt of the same grade (Usually Grade 5, refer to parts list). Repair parts may be ordered through your nearest **Blue Ox** dealer or distributor.