



BX2162 Installation Instructions

Serial No.

2001 Mercury Villager, V-6/ 3.3L.

The front fascia and blinker assembly are removed for baseplate installation. There are **NO** holes to be drilled and **NO** trimming. The attachment tabs are 24 inches center to center and at 15 inches height. The BX8869 is recommended for this base plate, see photo on page 2. Model notes: 57



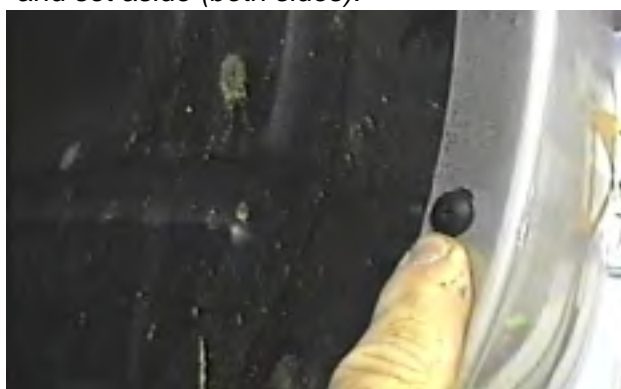
1. Remove the four phillips head push pins from the top side of grill.



2. Remove blinker assembly, one phillip screw, pull blinker assembly forward, disconnect electrical, and set aside (both sides).



3. Just under blinker assembly remove one phillip head push pin, both sides.



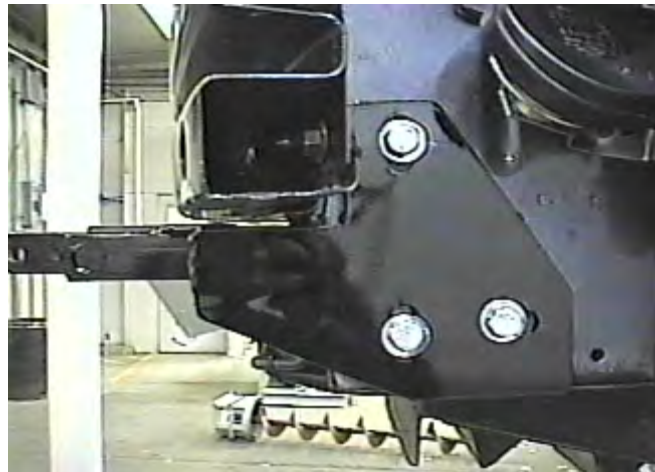
4. Forward of front tires remove one phillip screw both sides.



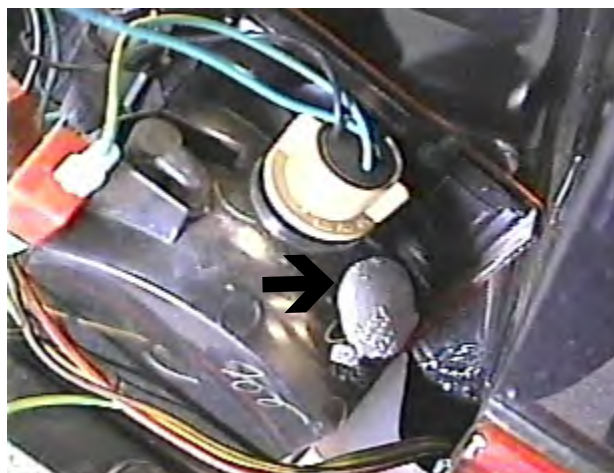
5. Just under fascia ends are two phillips screws to remove, both sides. Remove four push pins on the underside of fascia.



6. Pull wheel well black plastic back and remove two metric bolts with the 10MM socket where the fascia and bumper meet, both sides. Pull fascia forward and set aside.



7. Remove tie down brackets with the 14MM socket, three metric bolts, each side. The tie down brackets will **not** be reinstalled.
8. Hold baseplate into position and install items 2, 3, and 4, both sides. **Be sure and use loctite on all bolts before tightening.**
9. Reinstall blinker assembly and fascia. Be sure all electrical components are reconnected.
10. The dimensional variations between otherwise identical cars can be considerable. While the location and size of the holes in the baseplate were designed to allow for easy installation, it may be necessary to file a hole slightly to allow a bolt to clear.
11. Install the tow bar and safety cables according to the instructions included in their packages.
12. Do **not** substitute other devices if the tow bar pin and clip are lost.
13. **DEALER OR INSTALLER: BE CERTAIN THE USER RECEIVES THE INSTRUCTION SHEET.**



Location for the BX8869
(photo to the left).



Tools Required

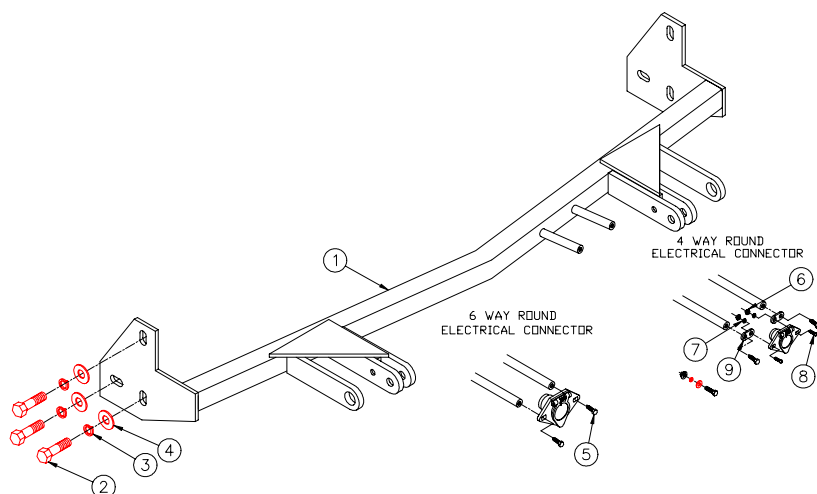
10MM Socket
14MM Socket

Loctite Blue
Phillips Screw Driver

Vise Grips

Parts List

Ref. No.	Qty.	Part No.	Description
1	1	61-5633	Weldment, Base Plate, BX2162
2	6	201-0423	10MM-1.25 x 35MM, Hex Bolt, Grd. 8.8, ZP
3	6	203-0104	10MM Lock Washer, ZP
4	6	203-0053	10MM Flat Washer, ZP
5	2	201-0553	1/4-20 x 1/2 Hx. Wshd, Type F Screw
6	2	202-0047	#10-32 Hex Nut
7	2	203-0054	#10 Lock Washer
8	2	201-0192	#10-32 x 1/2 Slot, Rd. Hd. Screw
9	2	101-5822	Adapter, 4 Way Connector



IMPORTANT: Use only genuine factory replacement parts on your Base Plate. Do not substitute homemade or nontypical parts. If a bolt is lost or in need of replacement, for your safety and the preservation of your Base Plate, be sure to use a replacement bolt of the same grade (Usually Grade 5, refer to parts list). Repair parts may be ordered through your nearest **Blue Ox** dealer or distributor.