



Strong As An Ox™

BX2179 Installation Instructions 2006 Lincoln Mark LT

Serial No.

The headlight assembly, front fascia and metal bumper are removed for baseplate installation. Drilling is required. Trimming or removal of lower grill in metal bumper is required. The bulb and socket assembly (BX8869) is available for the vehicle. Attachment Tabs are 24 inches center to center and a height of 22 inches.



1. Remove the push pin from rubber air dam just above headlight assembly, on both sides.



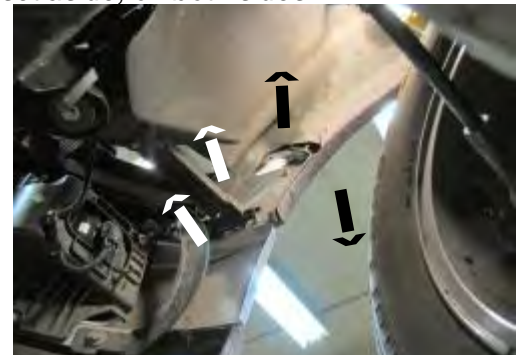
3. Just under headlight assembly, is one metric bolt to remove with the 10MM socket, on both sides.



5. Remove the three push pins from the lower rubber air dam on bottom edge of fascia.



2. Using the 10MM socket, remove the three metric bolts from headlight assembly, two on the side (shown above) and one on top, pull forward, unplug and set aside, on both sides.



4. Forward of front tires on wheel well edge, are two push pins (White arrows) to remove and two metric bolts (Black arrows) to remove from side panel, with the 10MM socket, on both sides.



6. Remove three metric bolts just behind headlight assembly, on fascia's upper corner with the 10MM socket, both sides.



Strong As An Ox™



7. Using the 10MM socket, remove one metric bolt from hood support guide on both sides, set hood support guide aside.



8. Using the 10MM socket, remove metric bolt from back side of metal bumper just outside of blinker assembly, on both sides.

9. Remove two metric bolts from the back side of lower bumper bracket and two metric bolts from upper bumper bracket using the 13MM socket, on both sides. While pulling side panels, just above wheel, out to the side (on both sides), pull metal bumper forward, disconnect all electrical connections and set metal bumper aside.



10. Slide baseplate on top of and between frame rails as far back as possible on both sides and clamp in place with the vise grips (Photo to the left). **Notice that the base plate is painted white to increase visibility in photos.**



Strong As An Ox™



11. Using the baseplate as a template, drill two holes on the top and side of frame rail with the 17/32" drill bit, on both sides.



12. Insert the 1/2" x 1 1/2" hex bolts into drilled holes on the top side of frame (Left photo), tighten 1/2" lock washers and hex nuts on the inside of frame, on both sides (Photo below). Insert the 1/2" x 1 1/2" hex bolts into drilled holes on the side of frame (Right photo), tighten 1/2" lock washers and hex nuts on the inside of frame, on both sides (Photo below). **Be sure and use Loctite red on all bolts before tightening. Tighten all bolts according to the Torque Chart in the General Instruction sheet.**





13. Reinstall metal bumper, rubber air dams, side panels and headlight assemblies. **Some models may need to have the black plastic trimmed on the bumper opening. Be sure all electrical components and hoses are plugged in properly.**

14. The dimensional variations between otherwise identical cars can be considerable. While the baseplate was designed for easy installation, it may be necessary to tailor the baseplate slightly to compensate for auto manufacturers' tolerances. These minor adjustments may include filing a hole slightly, bending electrical rods, adding shims and/or bending endplates.



15. Install the tow bar and safety cables according to the instructions included in their packages.

16. Do **not** substitute other devices if the tow bar pin and clip are lost.

17. DEALER OR INSTALLER: BE CERTAIN THE USER RECEIVES THE INSTRUCTION SHEET.

Location for the bulb and socket kit (Bx8869) on driver's side tail light assembly.





Tools Required

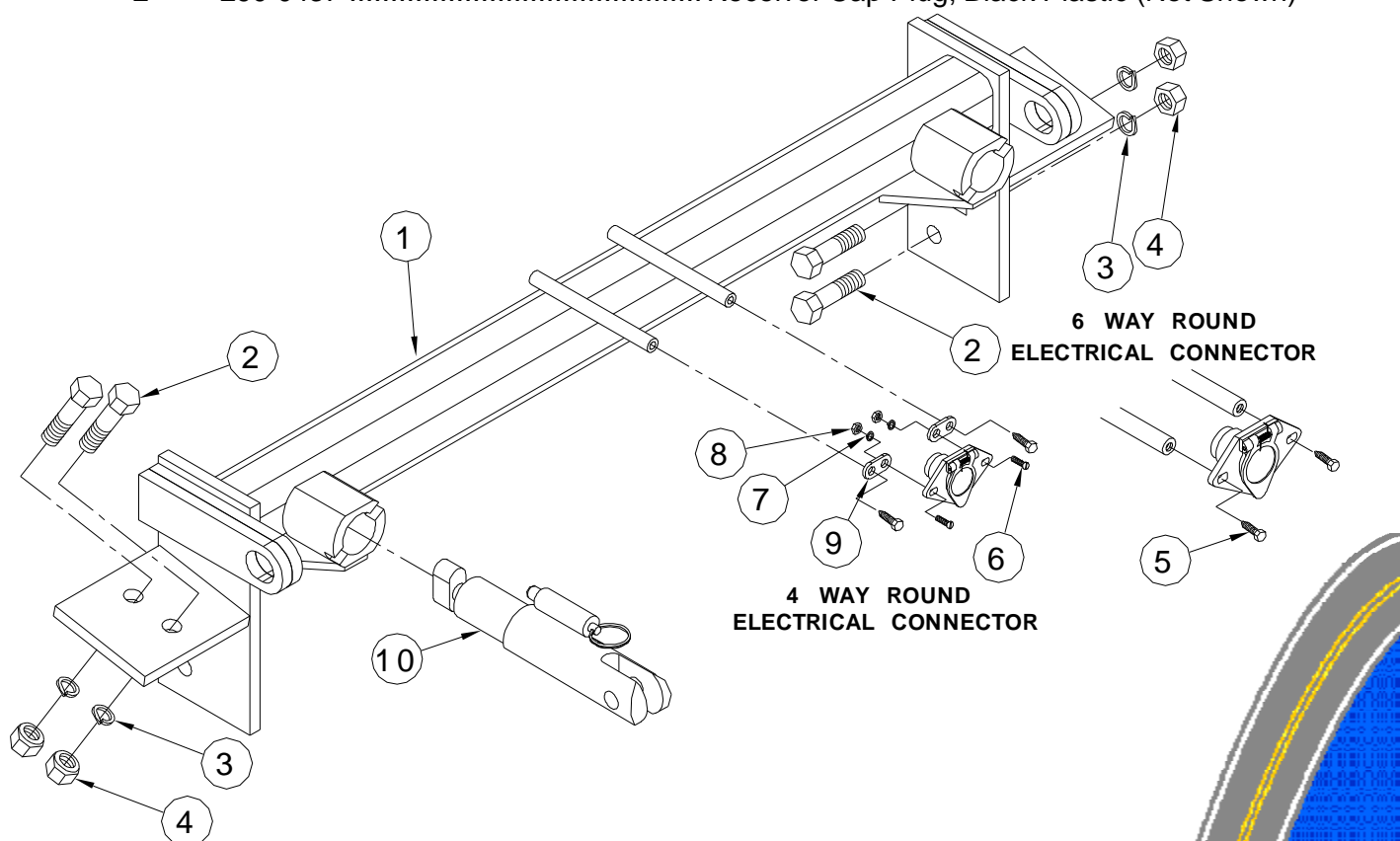
8MM Socket
3/4" Socket
Vise Grips

10MM Socket
Loctite Red
Utility Knife

13MM Socket
17/32" Drill Bit

Parts List

Ref. No.	Qty.	Part No.	Description
1	1	61-6141	Weldment, Base Plate, BX2179
2	8	201-0051	1/2-13 x 1 1/2 Bolt, Grd. 5, ZP
3	8	203-0012	1/2 Lock Washer, ZP
4	8	202-0005	1/2-13 Hex Nut, ZP
5	2	201-0553	1/4-20 x 1/2 Hx. Wshd, Type F Screw
6	2	201-0192	#10-32 x 1/2 Slot, Rd. Hd. Screw
7	2	203-0054	#10 Lock Washer
8	2	202-0047	#10-32 Hex Nut
9	2	101-5822	Adapter, 4 Way Connector
10	2	62-3468	Attachment Tab, SF/SB, ZP
	2	226-0049	Baseplate Safety Cable, 36" CL IV (Not Shown)
	4	229-0512	Quicklink, 1/2, ZP (Not Shown)
	2	290-0437	Receiver Cap Plug, Black Plastic (Not Shown)



IMPORTANT: Use only genuine factory replacement parts on your Base Plate. Do not substitute homemade or non-typical parts. If a bolt is lost or in need of replacement, for your safety and the preservation of your Base Plate, be sure to use a replacement bolt of the same grade (Usually Grade 5, refer to parts list). Repair parts may be ordered through your nearest **Blue Ox** dealer or distributor.