

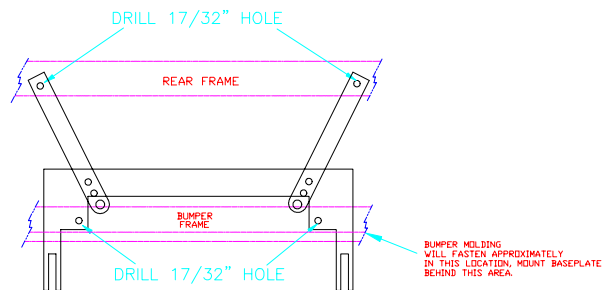


BX1503 Installation Instructions 1997-00 Buick Century

Utilization of Blue Ox baseplates with any tow bar not approved by Automatic Equipment Mfg. Co. invalidates the limited warranty.

Installation of this baseplate requires removing the bumper molding and drilling holes in the vehicle's frame. Both the bumper molding and the bottom air dam will need to be trimmed.

1. Read the General Instruction Sheet included with this baseplate.
2. The bumper molding will need to be removed to attach the baseplate. Remove the plastic rivets and bolts on the top and bottom of the bumper. There are two bolts that hold the molding to the side quarter panels. To get to these bolts remove the Phillips screws which are in front of the tires on each side of the car. Before pulling out the bumper there are four clips that hold the top of the bumper. These clips are connected to the grill part of the bumper and can be spread apart and pushed back. Now pull the bumper off the car.
3. Hold the baseplate weldment (Item 1) up to the frame so that it is centered on the bumper (as shown in drawing). Clamp the baseplate to the frame so that the bumper molding can be put back on. Use the baseplate as a template to drill the 17/32" holes. Insert the nut plates (Item 5) in the bumper and bolt the baseplate to the frame. Use Loctite Blue with the bolts to ensure the bolts do not loosen.
4. The bent braces (Item 2) will bolt to the two brackets that extend down from the baseplate. Use the 1/2" bolts and lock washers (Items 6 and 7) for this procedure. Hand tighten only.
5. The braces will extend to a cross frame, use the brace as a guide to drill the 17/32" holes. Use the bolts, washers and wire nuts (Items 4, 6 and 7) to bolt the braces to the frame.
6. Tighten each bolt, be sure to use Loctite Blue to ensure the bolts do not loosen. Replace the bumper molding, you will need to trim some of the molding so it will fit around the baseplate. The bottom air dam will need to be trimmed also.
7. The dimensional variations between otherwise identical cars can be considerable. While the location and size of the holes in the baseplate were designed to allow for easy installation, it may be necessary to file a hole slightly to allow a bolt to clear.
8. Do not substitute other devices if the tow bar pin and clip are lost.
9. **DEALER OR INSTALLER: BE SURE THE USER RECEIVES THE INSTRUCTION SHEET.**

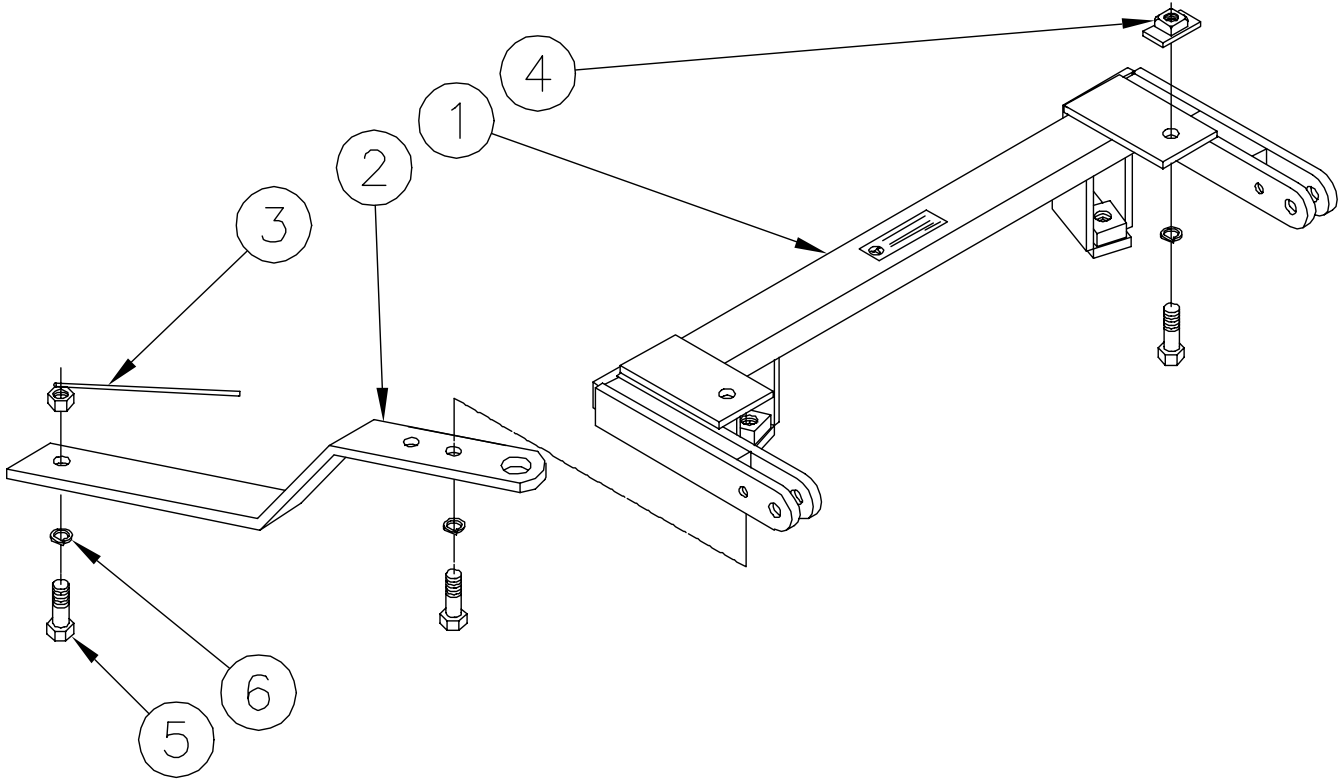


Automatic

Tools Required

3/4" Wrench
7mm Wrench
C - Clamp (2)

Phillips Screwdriver Loctite Blue
17/32" Drill Bit Drill



Parts List

Ref. No.	Qty.	Part No.	Description
1	1	61-5122	Weldment Baseplate, BX1503
2	2	102-5349	Brace
3	2	61-4029	1/2" Wire Nut
4	2	61-4931	1/2" Nut Plate
5	8	201-0068	1/2-13 x 1 3/4, Hex Bolt
6	8	203-0012	1/2" Lock Washer