



**BX1508 Installation Instructions  
2002-07 Buick Rendezvous**

**Serial No.**

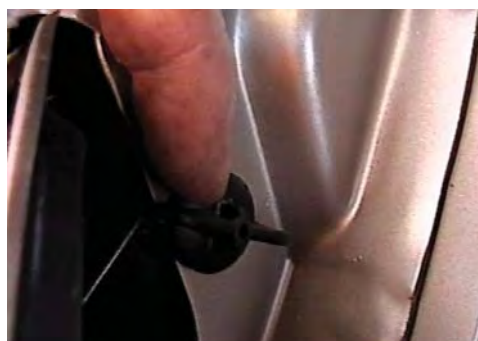
The front fascia is removed for baseplate installation. Holes need to be drilled. The BX8869 is available for the vehicle. Attachment Tabs are 24 inches center to center and a height of 13 inches.



1. *Using the phillips screw driver, remove the four screws from front grill.*



2. *On the top of the grill are four push pins to remove.*



3. *Just behind head light assembly is a wing bolt to remove.*



4. *Lift up retainer clip, pull head light assembly forward, unplug, and set aside, both sides.*



5. *Just behind head light assembly is a metric bolt to remove with the 6MM socket, both sides.*



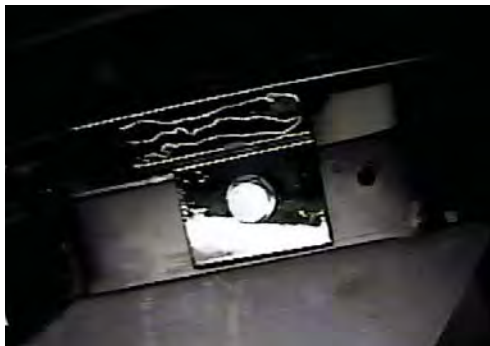
6. *Remove two phillips head screws just forward of front tire, both sides, and the six phillips screws from the underside of the fascia.*



Strong As An Ox™



7. Remove the six christmas tree pins from lower opening. Four of these are up and behind fascia. Pull fascia forward, unplug electrical connections and set aside.



9. Using the baseplate as a template, drill the two remaining holes for the lower braces with the 13/32" drill bit. Then insert item 2 behind cross member to align with drilled holes, install items 3 and 4, and tighten. **Be sure and use loctite on all bolts before tightening.**



8. Align the baseplate's back holes with the two existing holes on frame, insert item 2 into frame opening, and tighten items 3, 4, and 5 according to drawing on last page, both sides. Using the baseplate as a template, drill the remaining holes in frame with the 13/32" drill bit and install items 2, 3, and 4. **Be sure and use loctite on all bolts before tightening.**



10. For some vehicles it may be necessary to trim fascia on lower opening for brace bolts to allow fascia to return to original position. Reinstall fascia and head light assemblies. Be sure all electrical connections are made.

11. The dimensional variations between otherwise identical cars can be considerable. While the location and size of the holes in the baseplate were designed to allow for easy installation, it may be necessary to file a hole slightly to allow a bolt to clear.
12. Install the tow bar and safety cables according to the instructions included in their packages.
13. Do **not** substitute other devices if the tow bar pin and clip are lost.
14. **DEALER OR INSTALLER: BE CERTAIN THE USER RECEIVES THE INSTRUCTION SHEET.**



Strong As An Ox™

## Tools Required

6MM Socket  
10MM Socket

Loctite Blue  
9/16" Socket

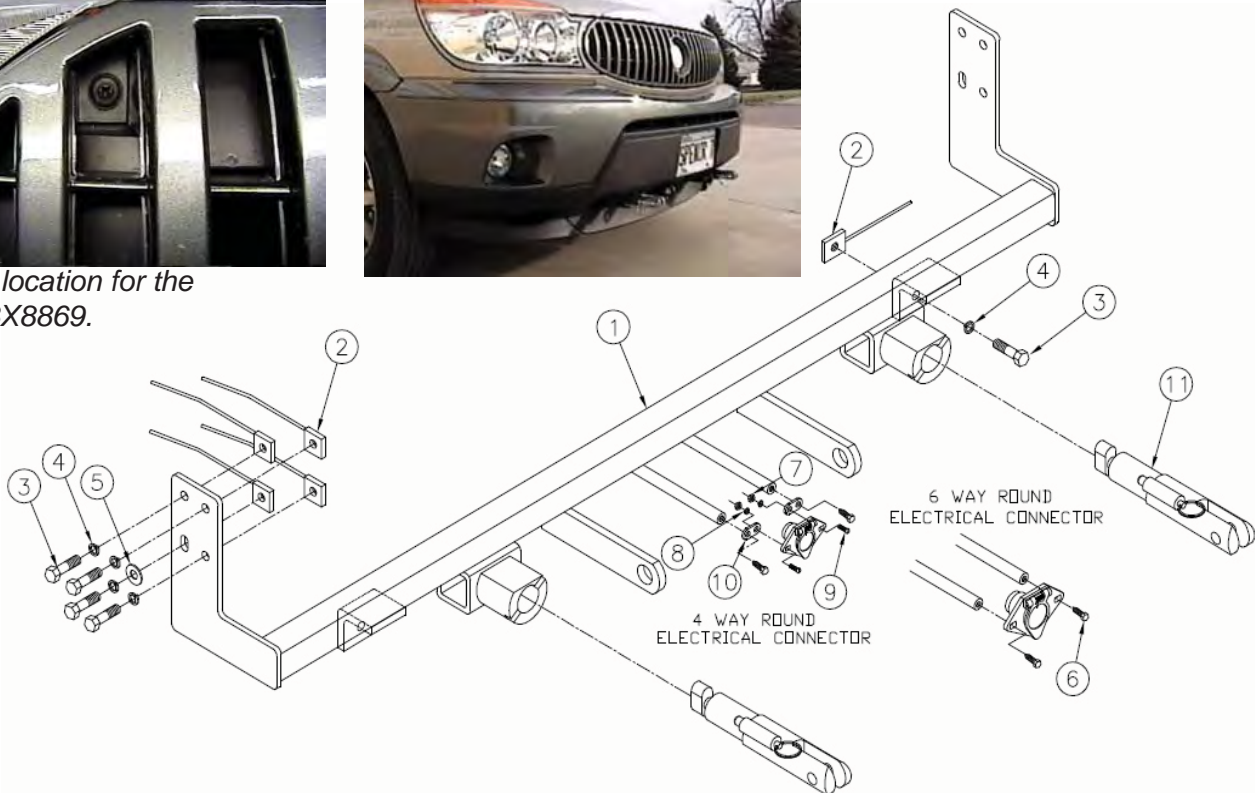
13/32" Drill Bit  
Vise Grips

## Parts List

Ref. No.	Qty.	Part No.	Description
1	1	61-5722	Weldment, Base Plate, BX1508
2	10	61-5208	Weldment, 3/8-16, Nut Plate
3	10	201-0440	3/8-16 x 1 1/2 Hex Bolt, Grd. 5, ZP
4	10	203-0010	3/8 Lock Washer, ZP
5	2	203-0003	3/8 Flat Washer, ZP
6	2	201-0553	1/4-20 x 1/2 Hx. Wshd, Type F Screw
7	2	202-0047	#10-32 Hex Nut
8	2	203-0054	#10 Lock Washer
9	2	201-0192	#10-32 x 1/2 Slot, Rd. Hd. Screw
10	2	101-5822	Adapter, 4 Way Connector
11	2	62-3468	Attachment Assembly, SF/ SB, (R)
	2	226-0046	Baseplate Safety Cable, 36" CL III (Not Shown)
	2	229-0359	Quicklink, 3/8, ZP (Not Shown)
	2	290-0437	Receiver, Cap Plug (BLK) (Not Shown)



Hole location for the BX8869.



**IMPORTANT:** Use only genuine factory replacement parts on your Base Plate. Do not substitute homemade or nontypical parts. If a bolt is lost or in need of replacement, for your safety and the preservation of your Base Plate, be sure to use a replacement bolt of the same grade (Usually Grade 5, refer to parts list). Repair parts may be ordered through your nearest **Blue Ox** dealer or distributor. Failing to follow and/or altering these installation instructions in either installation or required equipment will void the manufacturer's warranty. Towing behind a non-motorized vehicle will void the warranty.