



Installation Instructions BX1638
1997-2002 Chevrolet S-10 Blazer 2WD
1997-1998 GMC S-15 Jimmy 2WD

Serial No.



Figure 1

Holes need to be drilled and the plastic bumper fascia needs to be trimmed for the attachment tabs. Use Loctite for each bolt. If using a car mounted tow bar it is necessary to install a BX88133 or BX88135, depending on the tow bar.



Figure 4



Figure 2

1. Hold the baseplate up to the bottom of the frame so it is centered. Mark area needed to be trimmed on the plastic fascia to allow the attachment tabs to extend through. A small opening exists which is used for tow hooks. Trim plastic. Figure 1 and 2.

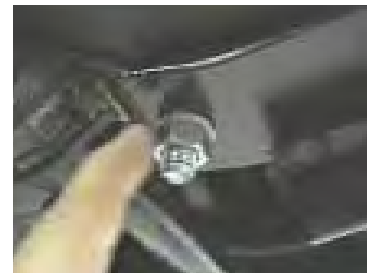


Figure 5

2. Take a bolt with wire and insert it through one of the holes on side the of the frame and into the hole forward of the sway bar/torsion brackets (bottom of the frame). Do this for both sides. Figure 3 and 4.

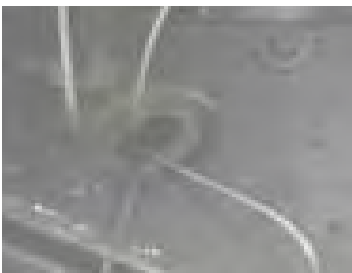


Figure 3

3. Place the rear holes of the baseplate through the bolts and tighten with the hardware shown in drawing on last page. Figure 5.

4. Drill the remaining holes for the baseplate, two for the bottom and two for the sides. Use same hardware as in previous steps.

5. DEALER OR INSTALLER: BE CERTAIN THE USER RECEIVES THE INSTRUCTION SHEET.

Tools Required

Loctite Blue

1/2 Drill Bit

3/4" Wrench

Utility Knife

Automatic

Parts List

Ref. No.	Qty.	Part No.	Description
1	1	61-5491	Weldment, Baseplate, BX1638
2	6	61-5511	1/2" Bolt with Wire
3	6	202-0005	1/2-13 Hex Nut, Grade 5
4	6	203-0012	1/2 Lock Washer
	2	226-0046	Baseplate Safety Cable, 36" CL III (Not Shown)
	2	229-0359	Quicklink, 3/8, ZP (Not Shown)

